

DATA SHEET

MAG-JET VALVE*



The Pumps with Nine Lives

Model: 31804 Use with Pump Models: 3CP1110CS, 3CP1120, 3CP1120G, 3CP1130, 3CP1140

Model: 31810 Use with Pump Models: 56, 56G1, 56G118, 56HS, 56HSG1, 56HSG118, 57, 60, 60G1, 60G118

Model: 31814 Use with Pump Models: 310, 340, 350, 5CP2120W, 5CP2140WCS, 5CP2150W

Model: 31815 Use with Pump Models: 45, 45G1, 45G118, 5CP3120, 5CP3120CSS, 5CP3120CSSG1, 5CP5120, 5CP5120CSS, 5CP5135CSS, 5CP5135CSSG1, 5CP5140, 5CP5140CSS, 5CP5140CSSG1, 5CP5140CSSG118

Model: 31845 Use with Pump Models: 530, 550, 660, 1050, 5CP6120, 5CP6120CSSG1, 7CP6110CS, 7CP6110CSG1, 7CP6160CS, 7CP6160CSG1, 7CP6170, 7CP6170G1



FEATURES

- Pushing the Mag-Jet handle activates the jetting action and pulling returns the pump smoothly to full flow, high-pressure operation.
- Special SS magnetic valve and super strong corrosion resistant magnet hold one inlet valve open for a pulsating action. The open valve permits flow through the pump, eliminating a dry pumping chamber.
- Pumping chamber is filled with liquid at all times, so it is not exposed to extreme vacuum conditions, aiding in longer seal and pump life.
- Mag-Jet valve easily mounts in the manifold inlet plug on most models for an easy field-retrofit.

SELECTION:

Each Mag-Jet valve has been designed for a specific pump or group of pumps and conveniently mounts into any of the inlet valve plug ports.

Due to its stacked valve design, the plunger pump model 3560 must be converted in-shop. A trained technician must install a specially machined discharge manifold to add the Mag-Jet hardware. To convert to 3560J, order Stem and Valve Kit PN 899910 and machined discharge manifold PN 899917.

INSTALLATION:

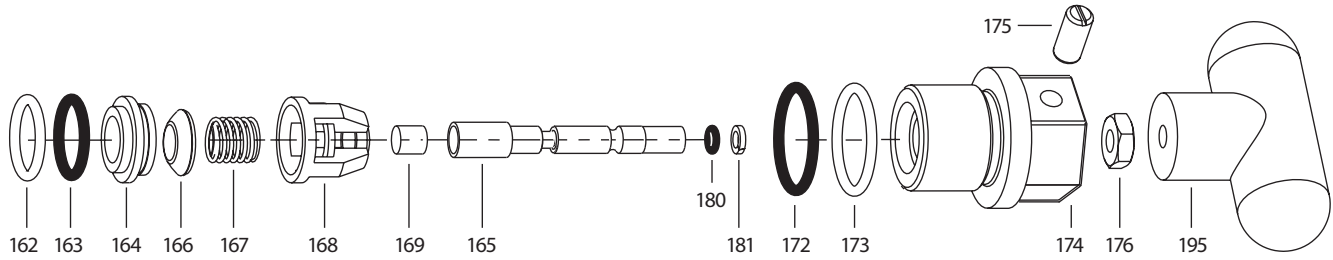
To install the Mag-Jet valve, first remove the standard inlet valve plug and valve assembly from any inlet valve chamber of your choosing. Insert the pre-assembled Mag-Jet valve assembly (items 162-168) and press completely into the valve chamber. Then thread the Mag-Jet body and handle assembly (items 169-195) into the valve chamber and torque to specifications (see Tech Bulletin 074).

OPERATION:

Release the trigger on the gun to activate the bypass mode, push in the handle to engage the magnet that holds open the inlet valve and start the jetting action. Pull out the handle to return to full flow, high-pressure cleaning mode. On the model 3560J the inlet valve is held open by the detent when the Mag-Jet valve is pushed in.

NOTE: When in jetting mode, pump output is reduced by $\frac{1}{3}$ and discharge pressure will drop.

EXPLODED VIEW



PARTS LIST

ITEM	MATL	DESCRIPTION	Mag-Jet Valve Assembly					QTY
			31804	31810	31814	31815	31845	
162	PTFE	Backup Ring, Seat	N/A	43248	—	N/A	43248	1
	D	Backup Ring, Seat	N/A	—	48361	N/A	—	1
163	NBR	O-Ring, Seat	17547	43249	43358	17547	43249	1
164	S	Seat, Inlet	45790	43722	43725	45790	44718	1
165	S	Stem	899926	899935	899926	899926	899938	1
166	SSSS	Valve (Magnet)	899929*	899937*	899929*	899929*	899937*	1
167	S	Spring	43750	43751	43750	43750	43751	1
168	PVDF	Retainer, Valve	899928	899936	899928	899928	31131	1
169	CP	Magnet (1/4" x 1/4")	899923	899923	899923	899923	—	1
	CP	Magnet (3/8" x 3/8")	—	—	—	—	899939	1
172	NBR	O-Ring, Valve Plug	17615	14179	17615	17549	17617	1
173	PTFE	Backup Ring, Valve Plug	N/A	20213	N/A	—	N/A	1
	D	Backup Ring, Valve Plug	N/A	—	N/A	48365	N/A	1
174	BB	Body, Valve Plug	899930	899931	899930	899933	899934	1
175	S	Detent Assembly	899925	899925	899925	899925	899925	1
176	STZP	Nut, Jam (1/4" – 20)	899927	899927	899927	899927	899927	1
180	NBR	O-Ring, Stem–70D	899921	899921	899921	899921	899921	1
181	PTFE	Backup Ring, Stem	899922	899922	899922	899922	899922	1
195	POP	Handle, Jetter	899920	899920	899920	899920	899920	1
310	—	Kit, Stem and Valve (Includes: 162–169, 172, 173, 180, 181)	899904	899906	899907	899908	899909	1

*NOTE: Special Magnetic Valve used in Mag-Jet assembly. Do not use standard valve from Valve Kits.

Bold print part numbers are unique to a particular pump model. *Italics are optional items.*

MATERIAL CODES (Not Part of Part Number): BB=Brass CP=Chrome Plated D=Acetal NBR=Medium Nitrile (Buna-N) PTFE=Pure Polytetrafluoroethylene
POP=Polypropylene PVDF=Polyvinylidene Fluoride S=304SS SSSS=440SS STZP=Steel/Zinc Plated

TROUBLESHOOTING

Won't Pulsate	<ul style="list-style-type: none"> Secure detent assembly setting by threading in, and then backing out 1/8 turn. 	Won't Resume to High-Pressure	<ul style="list-style-type: none"> Check jetter valve and seat for damage or trapped debris. Replace as needed with stem and valve kit.
Leaking at Stem	<ul style="list-style-type: none"> Worn O-ring on stem. Check all valves and repair as needed. 		

⚠ CAUTIONS AND WARNINGS

All high-pressure systems require a primary pressure regulating device (i.e. regulator, unloader) and a secondary pressure relief device (i.e. pop-off valve, relief valve). Failure to install such relief devices could result in personal injury or damage to pump or property. Cat Pumps does not assume any liability or responsibility for the operation of a customer's high-pressure system. Read all CAUTIONS and WARNINGS before commencing service or operation of any high-pressure system. The CAUTIONS and WARNINGS are included in each Service Manual and with each Accessory Data sheet. CAUTIONS and WARNINGS can also be viewed online at www.catpumps.com/dynamic-literature/cautions-and-warnings or can be requested directly from Cat Pumps.

WARRANTY

View the Limited Warranty on-line at www.catpumps.com/literature/cat-pumps-limited-warranty

CAT PUMPS 1681 94th Lane N.E., Minneapolis, MN 55449-4324 P: (763) 780-5440 F: (763) 780-2958 E: techsupport@catpumps.com www.catpumps.com

©2021 Cat Pumps Inc. All rights reserved. All data contained in this document are based on the latest product information available at the time of publication. Cat Pumps reserves the right to make changes at any time without notice.

PN 993278 Rev G, 21123 6/21