

DATA SHEET

INLINE INLET FILTER



Reinforced Composite Models: 32738, 32748



SPECIFICATIONS	U.S. Measure	Metric Measure
Flow	8 gpm	30 lpm
Mesh	50	50
Maximum Inlet Pressure	145 psi	10 bar
Maximum Temperature	104° F	40° C
Inlet Port	½" BSP(F)	½" BSP(F)
Discharge Port	32738 ½" BSP(M) 32748 ½" BSP(F)	½" BSP(M) ½" BSP(F)
Bypass Port	¼" BSP(F)	¼" BSP(F)
Weight	32738 0.37 lbs 32748 0.30 lbs	0.17 kg 0.14 kg
Dimensions	3.66 x 3.03 x 2.20"	93 x 77 x 56 mm

FEATURES

- RTP reinforced composite body utilizes brass threads, increasing durability.
- A low-profile design allows for efficient use of limited space.
- The removable lower body permits easy cleaning without removing the strainer from the inlet plumbing.
- Fluid flows from the inside out, so sediment collects inside the filter.
- A convenient top auxiliary port allows for adding a gauge or a bypass return line.

SELECTION: Select the filter to match the flow of the system, the type of liquid being pumped and the inlet pressure to the pump.

INSTALLATION: These inlet filters should be installed on the inlet side of the pump. An arrow is marked on the filter body indicating the direction of the flow. A shut-off valve should be plumbed between the filter and the liquid source for convenience when cleaning and performing system maintenance.

OPERATION: Fluid flows through the filter from the inside out, collecting sediment inside the filter. Open holding tanks, recycled water or additives may cause rapid clogging of the filter. Regularly check and clean the filter to avoid restricting the inlet flow to the pump. When cleaning, flush the filter screen, then thread the upper body and lower body hand tight to seal properly.

PARTS LIST

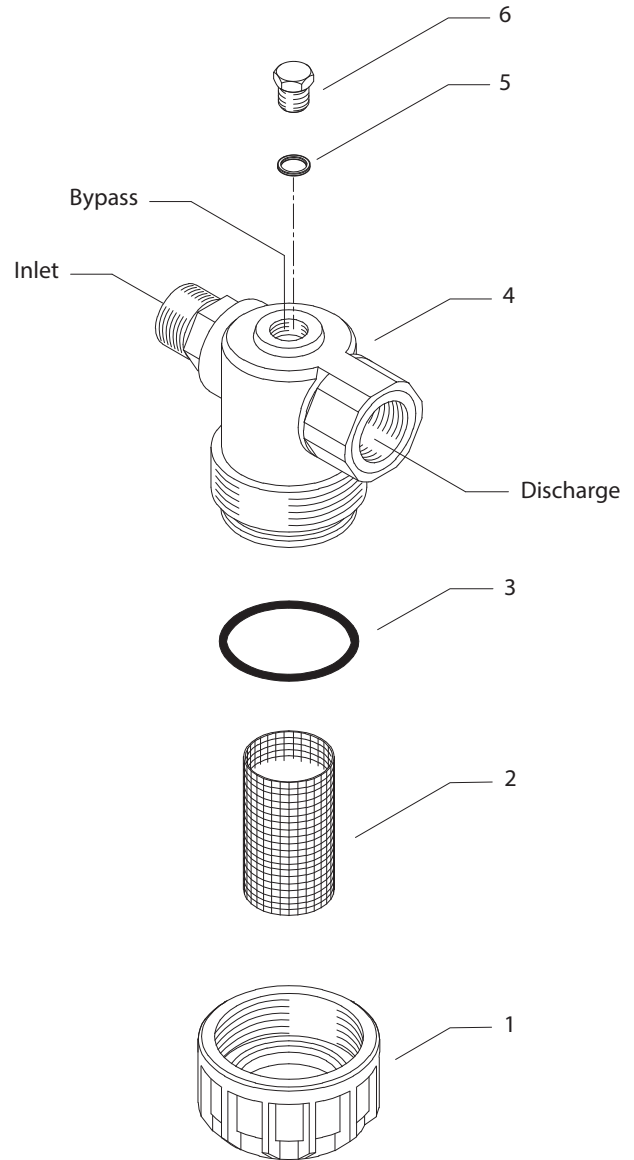
ITEM	P/N	MATL	DESCRIPTION	QTY
1	—	RTP	Body, Lower	1
2	33019	SS	Screen (50 Mesh)	1
3	33010	NBR	O-Ring, Body	1
4	—	RTP	Body, Upper	1
5	33986	FBR	Gasket (1/4")	1
6	33984	BB	Plug, Hex Head (1/4" BSP[M])	1

Material Codes (Not Part of Part No.): BB=Brass FBR=Fiber
NBR=Medium Nitrile (Buna-N) RTP=Reinforced Composite SS=316SS

TROUBLESHOOTING

System Pulsation	• Filter screen is clogged
Leaking at center connection	• O-ring is cut or pinched
Low system pressure	• Filter screen is clogged
Pitted valves, seats in pump	• Filter screen is clogged

EXPLODED VIEW



⚠ CAUTIONS AND WARNINGS

All high-pressure systems require a primary pressure regulating device (e.g. regulator, unloader) and a secondary pressure relief device (e.g. pop-off valve, relief valve). Failure to install such relief devices could result in personal injury or damage to pump or property. Cat Pumps does not assume any liability or responsibility for the operation of a customer's high-pressure system.

Read all CAUTIONS and WARNINGS before commencing service or operation of any high-pressure system. The CAUTIONS and WARNINGS are included in each Service Manual and with each Accessory Data sheet. CAUTIONS and WARNINGS can also be viewed online at www.catpumps.com/dynamic-literature/cautions-and-warnings or can be requested directly from Cat Pumps.

WARRANTY

View the Limited Warranty online at www.catpumps.com/literature/cat-pumps-limited-warranty