



TECH BULLETIN

115
10/12

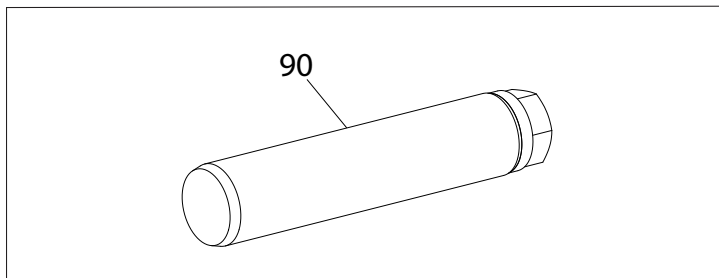
Published regarding engineering changes and improvements

SUBJECT: R Series Plunger Design Change

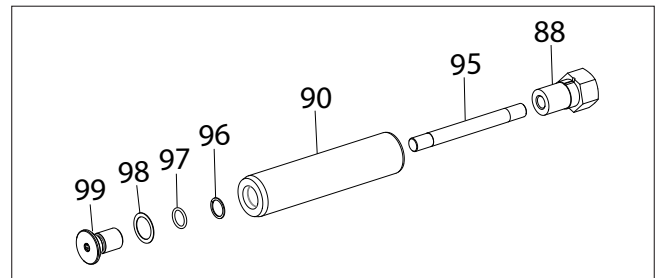
Models 152R060/C, 152R080/C, 152R100/C, 157R060, 157R080

The design of the plunger (90) has changed and the way it is mounted to the plunger rod (65) also changed. The current design has a stud (95) that goes through the center of the plunger (90) and a plunger retainer (99) is fastened at end of the plunger to the stud. The parts must be replaced as a set. The new plunger assembly part numbers below contain all the parts needed to change one plunger.

Previous Design



Current Design



| PREVIOUS PART NUMBER | |
|----------------------|---------------------------|
| PUMP MODEL | Plunger Assembly Part No. |
| 152R060 | 890401 |
| 152R080 | 890402 |
| 152R100 | 890403 |
| 157R060 | 890401 |
| 157R080 | 890402 |

| CURRENT PART NUMBER | |
|---------------------|---------------------------|
| PUMP MODEL | Plunger Assembly Part No. |
| 152R060 | 890395 |
| 152R080 | 890396 |
| 152R100 | 890397 |
| 157R060 | 890395 |
| 157R080 | 890396 |

CAT PUMPS
Technical Services Department