

DATA SHEET

NOZZLES



Brass Change Over Nozzle

32149



FEATURES

- Ultra compact and lightweight for flexibility.
- Simple right to left turn rotates ball to open high or low pressure nozzle.
- Stainless steel ball for long life.
- Simple inline low pressure adjustment permits chemical injection.

SELECTION

Select a nozzle which will match the degree of flexibility and precision performance needed for your system flow. The change over nozzle requires both a low and high pressure nozzle selection.

INSTALLATION

This adjustable pressure nozzle should be mounted in the discharge line following the shut-off gun. Use only in systems that fall within the flow and pressure requirements of the nozzle selected. Mount to any standard 1/4" NPT lance.

OPERATION

This adjustable pressure nozzle holder is designed to be used with a low pressure downstream chemical injector.

The change over nozzle has two 1/4" NPT(F) ports to hold any selection of low and high pressure nozzles required for the system up to 2900 psi rating. Shut the gun off by releasing the trigger. With a slight right to left rotation, the stainless steel ball inside the nozzle holder will shift position and redirect the flow. Shut the gun off before each nozzle selection is made. **When selecting the low pressure nozzle to be used with the change over nozzle, refer to the selection chart on the Chemical Injector data sheet to obtain the correct low pressure rating to permit proper chemical draw.**

For safety and consistent pressure adjustment, SHUT GUN OFF, MAKE ADJUSTMENT AND TRIGGER GUN to resume operation.

SPECIFICATIONS

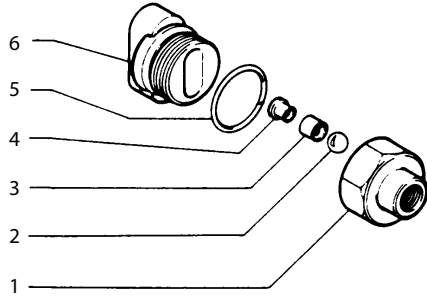
	U.S.	Metric
Maximum Flow	7 gpm	26.5 lpm
Maximum Pressure	2900 psi	200 bar
Maximum Temperature	195° F	90° C
Inlet Port	1/4" BSP(F)	1/4" BSP(F)
Nozzle Fitting (x2)	1/4" NPT(F)	1/4" NPT(F)
Weight	5.8 oz	165 gm
Dimensions	1.88 x 1.5"	48 x 38 mm

TROUBLE SHOOTING

Problem	Probable Cause	Solution
Leaking	<ul style="list-style-type: none"> • Worn O-rings. • Contaminated liquid. 	<ul style="list-style-type: none"> • Replace O-rings. • Check water supply. • Clean or replace O-rings.
Stays in High Pressure or Low Pressure	<ul style="list-style-type: none"> • Damage or clogged nozzle. • Ball stuck. • Cracked fitting. 	<ul style="list-style-type: none"> • Check water supply. • Build up of solution. Replace ball and seat. • Hand tighten onto lance to avoid damage to fitting.

EXPLODED VIEW

Change Over Nozzle Model 32149



PARTS LIST

ITEM	P/N	MATL	DESCRIPTION	QTY
1	—	BB	Inlet Fitting	1
2	31075	SSSS	Ball	1
3	32418	NY	Seat	2
4	—	BB	Spacer	2
5	32820	NBR	O-Ring, Body	1
6	—	BB	Nozzle Holder (2-1/4")	1

Material Codes (Not Part of Part No.):

BB=Brass NBR=Medium Nitrile (Buna-N) NY=Nylon SSSS=440SS

⚠ CAUTIONS AND WARNINGS

All High Pressure Systems require a primary pressure regulating device (i.e. regulator, unloader) and a secondary pressure relief device (i.e. pop-off valve, relief valve). Failure to install such relief devices could result in personal injury or damage to pump or property. Cat Pumps does not assume any liability or responsibility for the operation of a customer's high pressure system.

Read all CAUTIONS and WARNINGS before commencing service or operation of any high pressure system. The CAUTIONS and WARNINGS are included in each service manual and with each Accessory Data sheet. CAUTIONS and WARNINGS can also be viewed online at www.catpumps.com/cautions-warnings or can be requested directly from Cat Pumps.

WARRANTY

View the Limited Warranty on-line at www.catpumps.com/warranty.



CAT PUMPS

1681 - 94TH LANE N.E. MINNEAPOLIS, MN 55449-4324
PHONE (763) 780-5440 — FAX (763) 780-2958
e-mail: techsupport@catpumps.com
www.catpumps.com