



Front Load Shut-off Gun

Model **33425**

FEATURES

- Balanced front load design reduces operation fatigue.
- Lightweight high impact nylon-blend body for durability.
- Secure grip and quick release safety lock for operator comfort and safety.
- Optional insulated lance extensions offer cleaning flexibility.

SELECTION: Select a gun to match your system flow and pressure requirements, temperature and function being performed.

INSTALLATION: For safety and protection of the pump and system, a **pressure relief device** must be used with a high pressure shut-off gun. When the gun is shut-off, pressure spikes could result in severe damage to the pump or other components in the system without this device. Carefully examine the functioning of the system to determine the best type of relief valve to be used. If the system is a **single gun system** and the drive source will continue to run while the gun is intermittently shut-off, a pressure unloader should be installed. If **multiple guns** are in the system, a regulator or special multi-gun unloader should be used. The guns should be reasonably

SPECIFICATIONS

	U.S. Measure	Metric Measure
Maximum Flow	8 GPM	(30 L/M)
Maximum Pressure	2900 PSI	(200 BAR)
Maximum Temperature	210°F	(100°C)
Inlet Port	3/8" BSPF	(3/8" BSPF)
Outlet Port	1/4" NPTF	(1/4" NPTF)
Weight	9.6 oz.	(0.27 kg)
Dimensions	7.5x6.0x1.2"	(190x152x30 mm)

Gun is stamped with a European safety pressure. Use only at above specifications to assure proper gun life and performance.

synchronized in flow to avoid large amounts of by-pass from unused guns for prolonged periods. This may prematurely fatigue the pressure relief device or generate excessive heat in the by-pass mode.

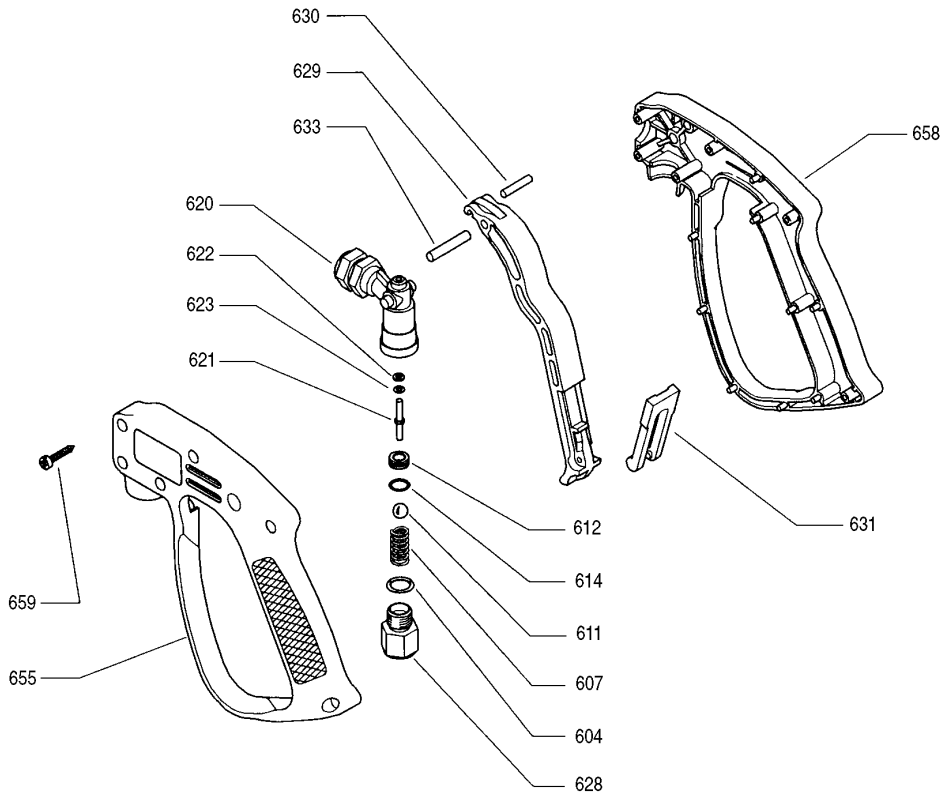
OPERATION: Flow through the gun occurs by squeezing the trigger on the gun. This allows the ball to back off the seat and permits the pumped liquid to flow through the valve body chamber and out the discharge port of the gun. Releasing the trigger shuts off the flow.

CAUTION

When gun is not in use, set safety trigger lock to avoid accidental high pressure operation and possible damage or bodily harm.

“Customer confidence is our greatest asset”

EXPLODED VIEW



PARTS LIST

ITEM	P/N	MATL	DESCRIPTION	QTY
604	—	NBR	O-Ring, Inlet Fitting	1
607	—	SS	Spring	1
611	—	SS	Ball	1
612	—	SS	Seat	1
614	—	NBR	O-Ring, Seat	1
620	—	BB	Body	1
621	—	SS	Rod, Actuator	1
622	—	PTFE	Back-up-Ring, Stem	1
623	—	FPM	O-Ring, Stem	1
628	—	BB	Fitting, Inlet (3/8" BSPF)	1
629	—	NY	Trigger, Black	1
630	—	SS	Pin, Trigger	1
631	—	NY	Latch, Safety, Red	1
633	—	BB	Pin, Trigger	1
655	—	NY	Handle, Left, Black	1
658	—	NY	Handle, Right, Black	1
659	—	STZP	Screw, Self Threading (M3.5x18)	6
665	34434	NY	Handle Assy (Incls: 655,658,659)	1
667	34435	NY	Trigger Assy (Incls: 629,630,631,633)	1
668	34427	—	Kit, Repair (Incls: 604,611,612,614,621,622,623)	1

MATERIAL CODES (Not Part of Part Number):

BB=Brass FPM=Fluorocarbon NBR=Medium Nitrile (Buna-N) NY=Nylon
PTFE=Pure Polytetrafluoroethylene SS=316SS STZP=Steel/Zinc Plated

Products described hereon are covered by one or more of the following U.S. patents 3558244, 3652188, 3809508, 3920356, 3930756 and 5035580

⚠ WARNING

Severe injury can occur with high pressure spray.
Do not allow spray to contact any part of body.

CAUTION

Activate safety latch when not in use
to avoid accidental injury.

TROUBLESHOOTING

<p>Water leaking out the discharge of the gun.</p> <p>Water leaking out the lever area.</p>	<ul style="list-style-type: none"> ● Object lodged between the seat and ball. ● Seat Worn. ● O-Ring on seat worn. ● O-Ring on actuator rod worn.
---------------------------------------------------------------------------------------------	--------------------------------------------------------------------------------------------------------------------------------------------------------------------------------------------

WARRANTY

90 Day Warranty

Refer to complete CAT PUMPS Warranty for further information.

World Headquarters

CAT PUMPS

1681 - 94th Lane N.E. Minneapolis, MN 55449-4324

Phone (763) 780-5440 — FAX (763) 780-2958

e-mail: sales@catpumps.com

www.catpumps.com

International Inquiries

FAX (763) 785-4329

e-mail: intlsales@catpumps.com



The Pumps with Nine Lives

CAT PUMPS (U.K.) LTD.

1 Fleet Business Park, Sandy Lane, Church Crookham, Fleet

Hampshire GU52 8BF, England

Phone Fleet 44 1252-622031 — Fax 44 1252-626655

e-mail: sales@catpumps.co.uk

N.V. CAT PUMPS INTERNATIONAL S.A.

Heiveldekens 6A, 2550 Kontich, Belgium

Phone 32-3-450.71.50 — Fax 32-3-450.71.51

e-mail: cpi@catpumps.be www.catpumps.be

CAT PUMPS DEUTSCHLAND GmbH

Buchwiese 2, D-65510 Idstein, Germany

Phone 49 6126-9303 0 — Fax 49 6126-9303 33

e-mail: catpumps@t-online.de www.catpumps.de