

## FEATURES

### Superior Design

- Triplex plunger design gives smoother liquid flow.
- V-Packings are completely lubricated and cooled by the liquid being pumped.
- Special flushed inlet manifold lubricates and cools seals for extended life with DI water and high temp liquids.
- Lubricated Lo-Pressure Seals provide double protection against external leakage.
- Oil bath crankcase assures optimum lubrication.
- Close tolerance concentricity of the ceramic plunger maximizes seal life.

### Quality Materials

- Precision design 304 and 316 stainless steel valves and seats are hardened and polished for ultimate seating and extended valve life.
- Forged Brass, 316 Stainless Steel or Nickel Aluminum Bronze manifolds for strength and corrosion resistance.
- Special concentric, high-density, polished, solid ceramic plungers provide a true wear surface and extended seal life.
- Specially formulated, CAT PUMP exclusive, V-Packings offer unmatched performance and seal life.
- Die cast aluminum crankcase provides high strength, minimum weight and precision tolerance control.
- Chrome-moly crankshaft gives unmatched strength and surface hardness.
- Oversized crankshaft bearings with greater loading capacity means longer bearing life.

### Easy Maintenance

- Wet-end is easily serviced without entering crankcase, requiring less time and effort.
- Valve assemblies are accessible without disturbing piping, for quick service.
- Inlet and discharge valve assemblies interchange for easier maintenance.
- Preset packings mean no packing gland adjustment is necessary, reducing maintenance costs.

### **⚠ WARNING**

All systems require both a primary pressure regulating device (i.e., regulator, unloader) and a secondary pressure safety relief device (i.e., pop-off valve, safety valve). Failure to install such relief devices could result in personal injury or damage to the pump or to system components. CAT PUMPS does not assume any liability or responsibility for the operation of a customer's high pressure system.

## 35 Frame Plunger Pump

**Brass**  
Standard and Flushed 3520, 3520C

**Stainless Steel**  
Standard and Flushed 3521, 3521C

**Nickel Aluminum Bronze**  
Standard 3527

## SPECIFICATIONS

|  | U.S. Measure          | Metric Measure       |
|--|-----------------------|----------------------|
| Flow .....   | 23 GPM                | (87 L/M)             |
| Pressure Range .....   | 100 to 2000 PSI       | (7 to 140 BAR)       |
| Inlet Pressure Range .....   | Flooded to 70 PSI     | (Flooded to 4.9 BAR) |
| RPM .....  | 800 RPM               | (800 RPM)            |
| Bore .....   | 1.260"                | (32 mm)              |
| Stroke .....   | 1.890"                | (48 mm)              |
| Crankcase Capacity .....   | 4.2 Qts.              | (4 L)                |
| Maximum Liquid Temperature.....  | 160°F                 | (71°C)               |
| Above 130°F call CAT PUMPS for inlet conditions and elastomer recommendations. |                       |                      |
| Inlet Ports (2).....   | 1-1/2" NPTF           | (1-1/2" NPTF)        |
| Flushing Ports (2) (3520C, 3521C) .....  | 1/4" NPTF             | (1/4" NPTF)          |
| Discharge Ports (2) .....  | 1" NPTF               | (1" NPTF)            |
| Pulley Mounting.....   | Either Side           | (Either Side)        |
| Shaft Diameter.....  | 1.378"                | (35 mm)              |
| Weight .....   | 139 lbs.              | (63 kg)              |
| Dimensions (3520, 3520C, 3527) .....   | 24.06 x 18.11 x 9.72" | (611 x 460 x 247 mm) |
| Dimensions (3521, 3521C).....  | 24.13 x 18.11 x 9.72" | (613 x 460 x 247 mm) |

## ELECTRIC HORSEPOWER REQUIREMENTS

| FLOW        |     | PRESSURE    |             |             |             | RPM |
|-------------|-----|-------------|-------------|-------------|-------------|-----|
|             |     | PSI<br>1200 | PSI<br>1500 | PSI<br>1800 | PSI<br>2000 |     |
| U.S.<br>GPM | L/M | BAR<br>85   | BAR<br>105  | BAR<br>125  | BAR<br>140  |     |
| 23          | 87  | 18.9        | 23.6        | 28.4        | 31.6        | 800 |
| 20          | 76  | 16.5        | 20.6        | 24.7        | 27.4        | 696 |
| 18          | 68  | 14.8        | 18.5        | 22.2        | 24.7        | 626 |

**DETERMINING THE PUMP R.P.M.**       $\frac{\text{Rated G.P.M.}}{\text{Rated R.P.M.}} = \frac{\text{"Desired" G.P.M.}}{\text{"Desired" R.P.M.}}$

**DETERMINING THE REQUIRED H.P.**       $\frac{\text{GPM} \times \text{PSI}}{1460} = \text{Electric Brake H. P. Required}$

**DETERMINING MOTOR PULLEY SIZE**       $\frac{\text{Motor Pulley O.D.}}{\text{Pump R.P.M.}} = \frac{\text{Pump Pulley O.D.}}{\text{Motor R.P.M.}}$

See complete Drive Packages [Incls: Pulleys, Belts, Hubs, Key] Tech Bulletin 003.  
Refer to pump **Service Manual** for repair procedure, additional technical information and **pump warranty**.

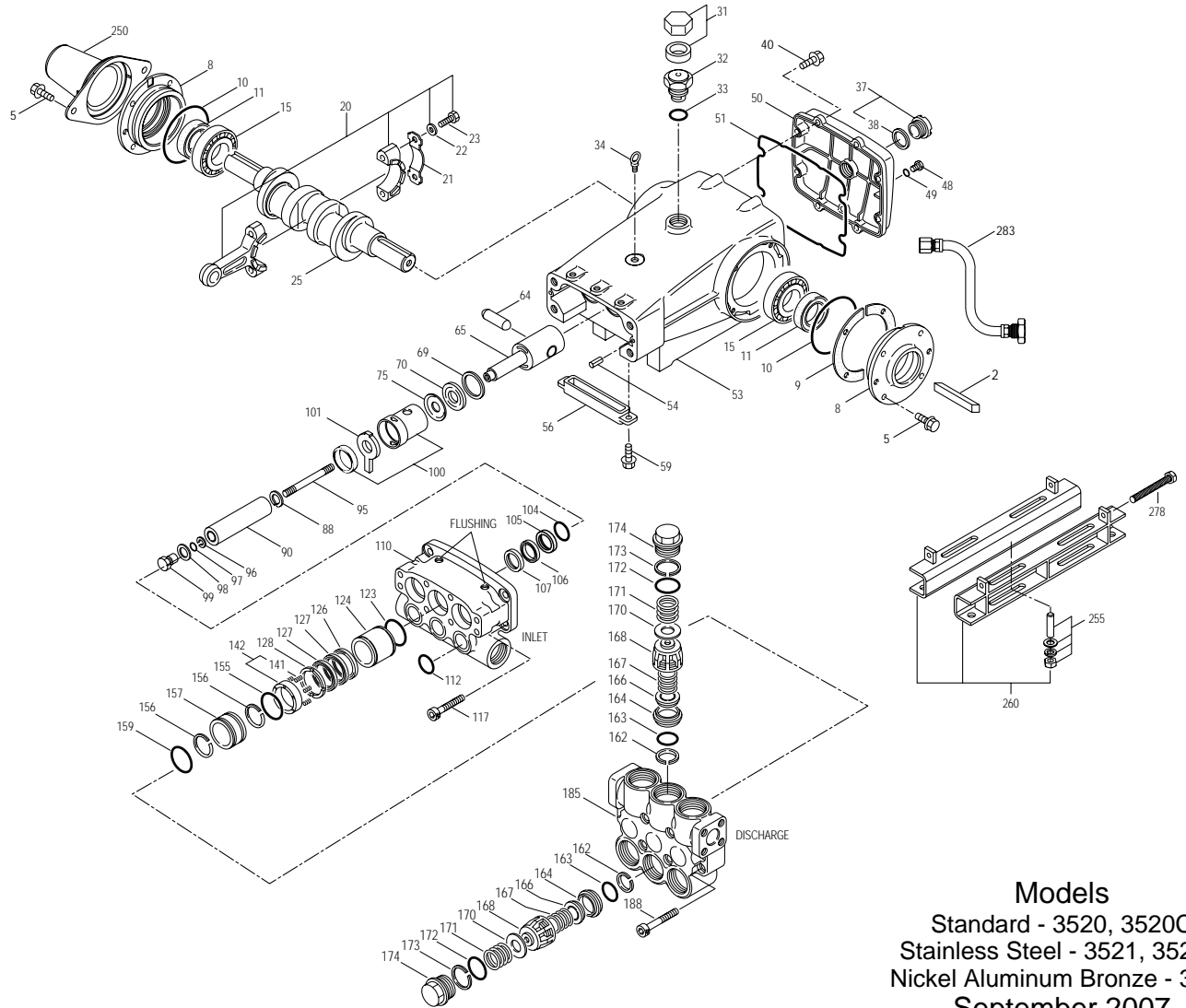
*"Customer confidence is our greatest asset"*

# PARTS LIST

| ITEM | PART NUMBER |        |        |        | DESCRIPTION | QTY    |  |      |
|------|-------------|--------|--------|--------|-------------|--------|--|------|
|      | 3520        | MATL   | 3521   | MATL   | 3527        | MATL   |  |      |
| 2    | 34021       | STL    | 34021  | STL    | 34021       | STL    | Key (M10x8x70)                                   | 1    |
| 5    | 125753      | S      | 125753 | S      | 125753      | S      | Screw, HHC Sems (M8x25)                          | 8    |
| 8    | 44542       | AL     | 44542  | AL     | 44542       | AL     | Cover, Bearing                                   | 2    |
| 9    | 815279      | FBR    | 815279 | FBR    | 815279      | FBR    | Shim, Split, 2-PC                                | 2    |
| 10   | 12398       | NBR    | 12398  | NBR    | 12398       | NBR    | O-Ring, Bearing Cover - 70D                      | 2    |
| 11   | 13296       | NBR    | 13296  | NBR    | 13296       | NBR    | Seal, Oil, Crankshaft                            | 2    |
| 15   | 29326       | STL    | 29326  | STL    | 29326       | STL    | Bearing, Roller                                  | 2    |
| 20   | 121467      | TNM    | 121467 | TNM    | 121467      | TNM    | Rod, Connecting Assy (Incls: 21, 22, 23) [10/00] | 3    |
| 21   | 126749      | STCP R | 126749 | STCP R | 126749      | STCP R | Washer, Locking                                  | 3    |
| 22   | 12490       | STZP   | 12490  | STZP   | 12490       | STZP   | Washer, Flat (M10)                               | 6    |
|      | 126574      | STCP R | 126574 | STCP R | 126574      | STCP R | Washer, Flat (M10)                               | 6    |
| 23   | 122045      | STZP   | 122045 | STZP   | 122045      | STZP   | Screw, HH (M10x55)                               | 6    |
| 25   | 29325       | FCM    | 29325  | FCM    | 29325       | FCM    | Crankshaft, Dual End                             | 1    |
| 31   | 828710      | —      | 828710 | —      | 828710      | —      | Protector, Oil Cap w/Foam Gasket                 | 1    |
| 32   | 43211       | ABS    | 43211  | ABS    | 43211       | ABS    | Cap, Oil Filler                                  | 1    |
| 33   | 14177       | NBR    | 14177  | NBR    | 14177       | NBR    | O-Ring, Oil Filler Cap - 70D                     | 1    |
| 34   | 126743      | STCP R | 126743 | STCP R | 126743      | STCP R | Bolt, Eye (M12x1.75) (For Lifting Pump Only)     | 1    |
| 37   | 92241       | —      | 92241  | —      | 92241       | —      | Gauge, Oil, Bubble w/Gasket - 80D                | 1    |
| 38   | 44428       | NBR    | 44428  | NBR    | 44428       | NBR    | Gasket, Flat Oil Gauge - 80D                     | 1    |
| 40   | 125753      | S      | 125753 | S      | 125753      | S      | Screw, HHC Sems (M8x25)                          | 8    |
| 48   | 25625       | STCP   | 25625  | STCP   | 25625       | STCP   | Plug, Drain (1/4"x19BSP)                         | 1    |
| 49   | 23170       | NBR    | 23170  | NBR    | 23170       | NBR    | O-Ring, Drain Plug - 70D                         | 1    |
| 50   | 45936       | AL     | 45936  | AL     | 45936       | AL     | Cover, Rear                                      | 1    |
| 51   | 16612       | NBR    | 16612  | NBR    | 16612       | NBR    | O-Ring, Cover - 70D                              | 1    |
| 53   | 44487       | AL     | 44487  | AL     | 44487       | AL     | Crankcase Assy (Incls: 34, 54)                   | 1    |
| 54   | 27488       | S      | 27488  | S      | 27488       | S      | Pins, Guide                                      | 2    |
| 56   | 27790       | POP    | 27790  | POP    | 27790       | POP    | Pan, Oil   | 1    |
| 59   | 92538       | S      | 92538  | S      | 92538       | S      | Screw, HHC Sems (M6x16)                          | 2    |
| 64   | 43864       | CM     | 43864  | CM     | 43864       | CM     | Pin, Crosshead                                   | 3    |
| 65   | 45116       | SSZZ   | 45116  | SSZZ   | 45116       | SSZZ   | Rod, Plunger                                     | 3    |
| 69   | 126587      | STCP R | 126587 | STCP R | 126587      | STCP R | Washer, Oil Seal                                 | 3    |
| 70   | 100488      | NBRS   | 100488 | NBRS   | 100488      | NBRS   | Seal, Oil, Crankcase                             | 3    |
|      | 44739       | FPM    | 44739  | FPM    | 44739       | FPM    | Seal, Oil, Crankcase                             | 3    |
| 75   | 43865       | S      | 43865  | S      | 43865       | S      | Slinger, Barrier                                 | 3    |
| 88   | 45676       | S      | 45676  | S      | 45676       | S      | Washer, Keyhole (M16)                            | 3    |
| 90   | 43957       | CC     | 43957  | CC     | 43957       | CC     | Plunger (M32x145)                                | 3    |
| 95   | 89778       | SS     | 89778  | SS     | 89778       | SS     | Stud, Plunger Retainer (M10x135)                 | 3    |
| 96   | 20189       | PTFE   | 20189  | PTFE   | 20189       | PTFE   | Back-up-Ring, Plunger Retainer                   | 3    |
| 97   | 11345       | NBR    | 11345  | NBR    | 11345       | NBR    | O-Ring, Plunger Retainer -70D                    | 3    |
|      | 11375       | FPM    | 11375  | FPM    | 11375       | FPM    | O-Ring, Plunger Retainer                         | 3    |
|      | 701490      | EPDM   | 701490 | EPDM   | 701490      | EPDM   | O-Ring, Plunger Retainer                         | 3    |
| 98   | 44085       | SS     | 44085  | SS     | 44085       | SS     | Gasket, Retainer                                 | 3    |
| 99   | 44084       | SS     | 44084  | SS     | 44084       | SS     | Retainer, Plunger (M10)                          | 3    |
| 100  | 814279      | PVDF   | 814279 | PVDF   | 814279      | PVDF   | Retainer, Seal, 2 Pc.                            | 3    |
| 101  | 44106       | —      | 44106  | —      | 44106       | —      | Wick, Long Tab                                   | 3    |
| 104  | 43875       | NBR    | 43875  | NBR    | 43875       | NBR    | O-Ring, Inlet Adapter - 70D                      | 3    |
|      | 44826       | FPM    | 44826  | FPM    | 44826       | FPM    | O-Ring, Inlet Adapter - 70D                      | 3    |
|      | 701656      | EPDM   | 701656 | EPDM   | 701656      | EPDM   | O-Ring, Inlet Adapter - 70D                      | 3    |
| 105  | 43961       | BB     | 45562  | SS     | 45562       | SS     | Inlet Adapter                                    | 3    |
| 106  | 44098       | NBR    | 44098  | NBR    | 44098       | NBR    | Seal, LPS w/SS-Spg                               | 3    |
|      | 44827       | FPM    | 44827  | FPM    | 44827       | FPM    | Seal, LPS w/SS-Spg                               | 3    |
|      | 48244       | EPDM   | 48244  | EPDM   | 48244       | EPDM   | Seal, LPS w/SS-Spg                               | 3    |
| 107  | 43962       | S      | 44101  | SS     | 44101       | SS     | Washer   | 3    |
| 110  | 46392       | BBCP   | 45365  | SS     | 45124       | NAB    | Manifold, Inlet                                  | 1    |
|      | 46392C      | BBCP   | 125397 | SS     | —           | —      | Manifold, Inlet, Flushed (1/4" Flush Ports)      | 1    |
| 112  | 11379       | NBR    | 11379  | NBR    | 11379       | NBR    | O-Ring, Inlet Manifold - 70D                     | 3    |
|      | 14183       | FPM    | 14183  | FPM    | 14183       | FPM    | O-Ring, Inlet Manifold                           | 3    |
|      | 701491      | EPDM   | 701491 | EPDM   | 701491      | EPDM   | O-Ring, Inlet Manifold - 70D                     | 3    |
| 117  | 44585       | S      | 44585  | S      | 44585       | S      | Screw, HSH (M14x40)                              | 4    |
| 123  | 12391       | NBR    | 12391  | NBR    | 12391       | NBR    | O-Ring, V-Packing Cylinder - 70D                 | 3    |
|      | 13266       | FPM    | 13266  | FPM    | 13266       | FPM    | O-Ring, V-Packing Cylinder - 70D                 | 3    |
|      | 701657      | EPDM   | 701657 | EPDM   | 701657      | EPDM   | O-Ring, V-Packing Cylinder - 70D                 | 3    |
| 124  | 46348       | BB     | 45563  | SSL    | 45563       | SSL    | Cylinder, V-Packing                              | 3    |
| 126  | 43963       | BB     | 48390  | D      | 48390       | D      | Adapter, Female                                  | 3    |
|      | —           | —      | 45564  | SS     | 45564       | SS     | Adapter, Female                                  | 3    |
| 127  | 44608       | STG*   | 44608  | STG*   | 44608       | STG*   | V-Packing  | 6    |
|      | 44829       | SFG    | 44829  | SFG    | 44829       | SFG    | V-Packing  | 6    |
| 128  | 43965       | BB     | 45565  | SS     | 45565       | SS     | Adapter, Male                                    | 3    |
| 141  | 45113       | SS     | 45113  | SS     | 45113       | SS     | Spring, Coil                                     | 6/18 |
| 142  | 46349       | BB     | 45566  | SS     | 45566       | SS     | Spacer, w/Coil Springs                           | 3    |
| 155  | 48861       | NBR    | 48861  | NBR    | 48861       | NBR    | O-Ring, V-Packing Spacer - 90D                   | 3    |
|      | 11748       | FPM    | 11748  | FPM    | 11748       | FPM    | O-Ring, V-Packing Spacer - 70D                   | 3    |
|      | 701657      | EPDM   | 701657 | EPDM   | 701657      | EPDM   | O-Ring, V-Packing Spacer - 70D                   | 3    |
| 156  | 48371       | D      | 48371  | D      | 48371       | D      | Back-up-Ring, V-Packing Spacer                   | 3    |
| 157  | 43966       | BB     | 45674  | SS     | 45674       | SS     | Spacer, V-Packing                                | 3    |
| 158  | 48362       | D      | 48362  | D      | 48362       | D      | Back-up-Ring, V-Packing Spacer                   | 3    |
| 159  | 48860       | NBR    | 48860  | NBR    | 48860       | NBR    | O-Ring, V-Packing Spacer - 90D                   | 3    |
|      | 20137       | FPM    | 20137  | FPM    | 20137       | FPM    | O-Ring, V-Packing Spacer - 70D                   | 3    |
|      | 701492      | EPDM   | 701492 | EPDM   | 701492      | EPDM   | O-Ring, V-Packing Spacer                         | 3    |
| 162  | 48363       | D      | 48363  | D      | 48363       | D      | Back-up-Ring, Valve Seat                         | 6    |
| 163  | 26142       | NBR    | 26142  | NBR    | 26142       | NBR    | O-Ring, Seat - 80D                               | 6    |
|      | 14330       | FPM    | 14330  | FPM    | 14330       | FPM    | O-Ring, Seat                                     | 6    |
|      | 701493      | EPDM   | 701493 | EPDM   | 701493      | EPDM   | O-Ring, Seat                                     | 6    |
| 164  | 44727       | S      | 44612  | SS     | 44612       | SS     | Seat, Stepped                                    | 6    |
| 166  | 43932       | S      | 44108  | SS     | 44108       | SS     | Valve  | 6    |
| 167  | 44109       | SS     | 44109  | SS     | 44109       | SS     | Spring   | 6    |
| 168  | 44728       | PVDF   | 44728  | PVDF   | 44728       | PVDF   | Retainer, Spring                                 | 6    |
| 170  | 44729       | SS     | 44729  | SS     | 44729       | SS     | Washer, Spring Retainer                          | 6    |
| 171  | 44644       | SS     | 44644  | SS     | 44644       | SS     | Coil Spring (70kg), Valve Plug                   | 6    |
| 172  | 89827       | NBR    | 89827  | NBR    | 89827       | NBR    | O-Ring, Valve Plug - 90D                         | 6    |
|      | 11747       | FPM    | 11747  | FPM    | 11747       | FPM    | O-Ring, Valve Plug - 90D                         | 6    |
|      | 701494      | EPDM   | 701494 | EPDM   | 701494      | EPDM   | O-Ring, Valve Plug - 70D                         | 6    |

Replace as a set

# EXPLODED VIEW



**Models**  
 Standard - 3520, 3520C  
 Stainless Steel - 3521, 3521C  
 Nickel Aluminum Bronze - 3527  
 September 2007

|     | <b>3520</b>   | <b>MATL</b> | <b>3521</b>   | <b>MATL</b> | <b>3527</b>   | <b>MATL</b> |  |   |
|-----|---------------|-------------|---------------|-------------|---------------|-------------|--|---|
| 173 | 48364         | D           | 48364         | D           | 48364         | D           | Back-up-Ring, Valve Plug   | 6 |
| 174 | <b>46444</b>  | <b>FBB</b>  | <b>49300</b>  | <b>SSD</b>  | <b>44643</b>  | <b>NAB</b>  | Plug, Valve [02/06]  | 6 |
| 185 | <b>49253</b>  | <b>BBCP</b> | <b>49299</b>  | <b>SSD</b>  | <b>49249</b>  | <b>NAB</b>  | Manifold, Discharge [02/06]  | 1 |
| 188 | 89981         | S           | 89981         | S           | 89981         | S           | Screw, HSH (M12x70)  | 8 |
| 250 | 44516         | NY          | 44516         | NY          | 44516         | NY          | Protector, Shaft w/2 Screws Lockwashers and Washers (Included with pump)   | 1 |
| 255 | 34018         | STZP        | 34018         | STZP        | 34018         | STZP        | Assy, Direct Mount   | 1 |
|     | 34039         | SS          | 34039         | SS          | 34039         | SS          | Assy, Direct Mount   | 1 |
| 260 | 92674         | STZP        | 92674         | STZP        | 92674         | STZP        | Mounting, Box Assy (Incls: 34018)  | 1 |
| 275 | 990013        | STL         | 990013        | STL         | 990013        | STL         | Hub "B" 35mm w/Keyway [See Drive Packages, Tech Bulletin 003]  | 1 |
| 278 | 80540         | ZP          | 80540         | ZP          | 80540         | ZP          | Screw, HH (M12x100) (Rail Adjusting Screw)   | 1 |
| 279 | 30278         | STZP        | 30278         | STZP        | 30278         | STZP        | Oiler (1 oz.)  | 3 |
| 281 | 30967         | —           | 30967         | —           | 30967         | —           | Glass, Oiler   | 3 |
| 282 | 10069         | NBR         | 10069         | NBR         | 10069         | NBR         | Gasket, Oiler  | 3 |
| 283 | 34314         | —           | 34314         | —           | 34314         | —           | Kit, Oil Drain   | 1 |
| 299 | <b>814822</b> | <b>BBCP</b> | <b>814797</b> | <b>SS</b>   | <b>815438</b> | <b>NAB</b>  | Head, Complete   | 1 |
| 300 | 31039         | NBR*        | 31039         | NBR*        | 31039         | NBR*        | Kit, Seal (Incls: 97,104,106,112,123,127,155,156,158,159)  | 1 |
|     | 33259         | FPM         | 33259         | FPM         | 33259         | FPM         | Kit, Seal (Incls: 97,104,106,112,123,127,155,156,158,159)  | 1 |
| 310 | ◆ 33456       | EPDM*       | ◆ 33456       | EPDM*       | ◆ 33456       | EPDM*       | Kit, Seal (Incls: 97,104,106,112,123,127,155,156,158,159)  | 1 |
|     | <b>34235</b>  | <b>NBR</b>  | <b>34017</b>  | <b>NBR</b>  | <b>34017</b>  | <b>NBR</b>  | Kit, Valve (Incls: 162,163,164,166,167,168,170,172,173)  | 2 |
|     | 31955         | FPM         | 31955         | FPM         | 31955         | FPM         | Kit, Valve (Incls: 162,163,164,166,167,168,170,172,173)  | 2 |
|     | ◆ 31952       | EPDM        | ◆ 31952       | EPDM        | ◆ 31952       | EPDM        | Kit, Valve (Incls: 162,163,164,166,167,168,170,172,173)  | 2 |
| —   | 819000        | F           | 819000        | F           | 819000        | F           | Assy, Crankcase, Cast Iron Conversion  | 1 |
| 390 | 714500        | SS          | 714500        | SS          | 714500        | SS          | C.A.T. (Inlet pressure stabilizer for RO and boosted inlet applications)   | 1 |
| 391 | 714506        | SS          | 714506        | SS          | 714506        | SS          | Adapter (2 per C.A.T.) (See Data Sheet for complete selection)   | 2 |
| —   | 6575          | —           | 6575          | —           | 6575          | —           | Plunger Pump Service DVD   | 1 |
| —   | 6100          | —           | 6100          | —           | 6100          | —           | Oil, Case (12 Bottles) ISO 68 Multi-viscosity Hydraulic (Fill to specified crankcase capacity prior to start-up) | 1 |
| —   | —             | —           | 6119          | —           | —             | —           | Lubricant, Antiseize (1 oz.)   | 1 |

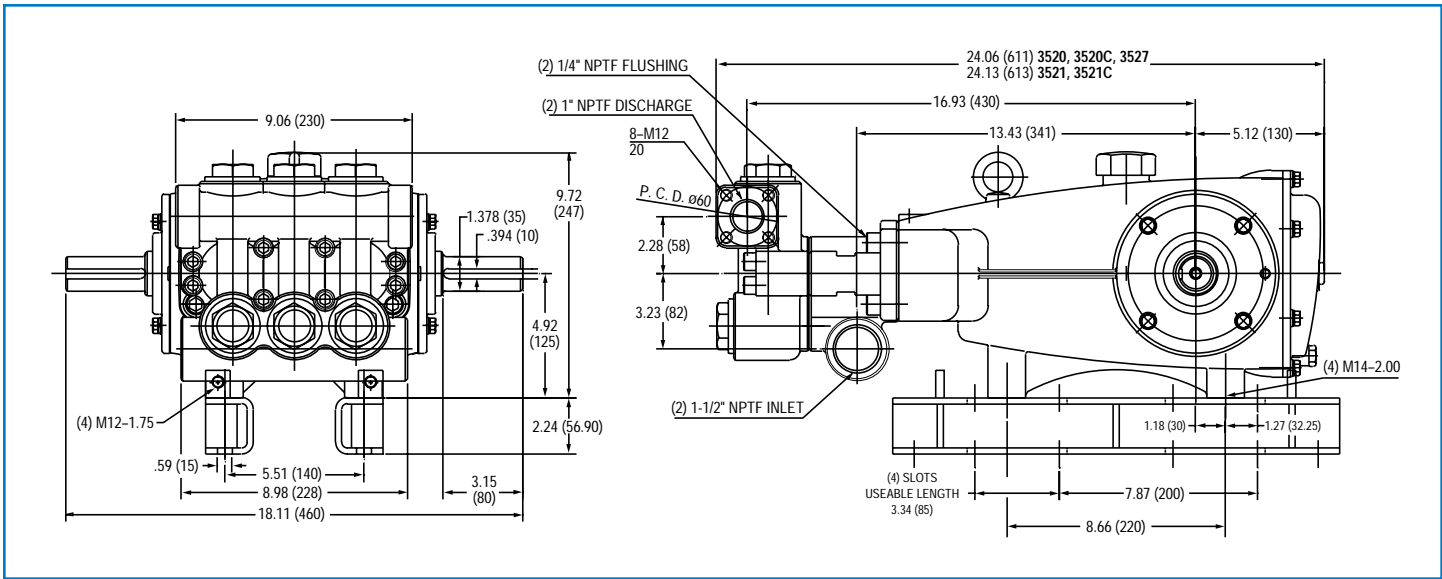
**Bold print part numbers are unique to a particular pump model. Italics are optional items. [ ]** Date of latest production change. ◆ Silicone oil/grease required.

† Production Parts Nickel Aluminum Bronze, Replacement Parts are 316 Stainless Steel. R Components comply with RoHS Directive.

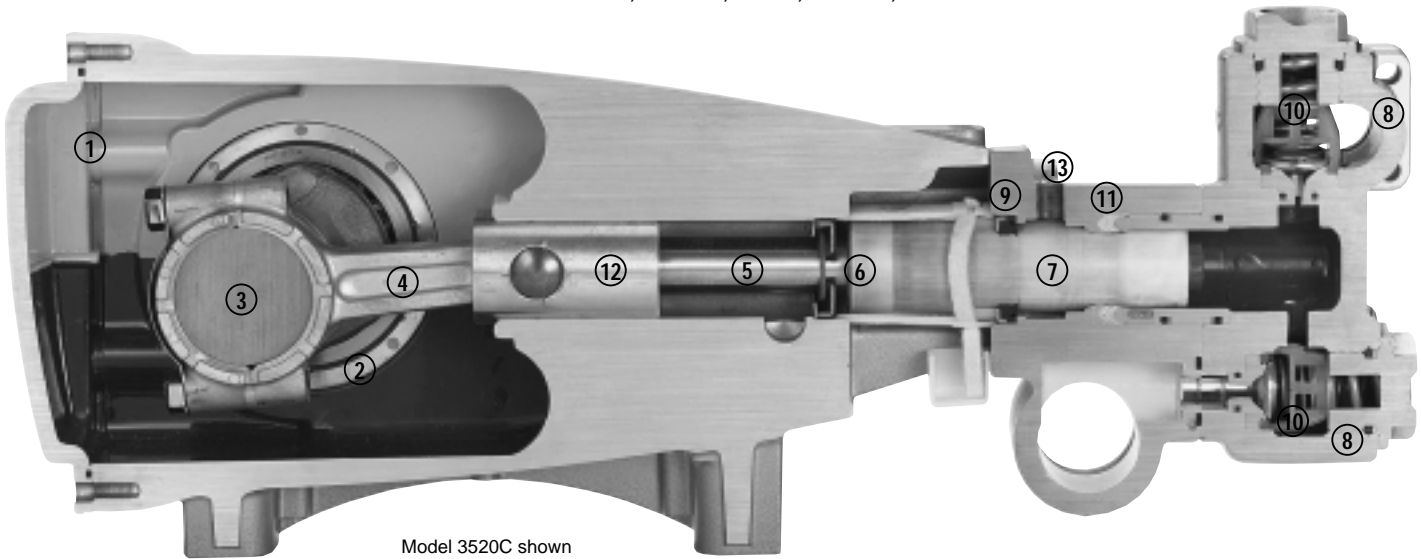
\*Review material codes for individual items (STG generally may be used as alternate). **C.A.T. highly recommended for pressurized inlet, R.O. and industrial applications.**

See Tech Bulletins 002, 003, 024, 040, 041, 050, 052, 053, 064, 069, 074, 077, 083 and 100 for additional information.

MATERIAL CODES (Not Part of Part Number): ABS=ABS Plastic AL=Aluminum BB=Brass BBCP=Brass/Chrome Plated CC=Ceramic CM=Chrome-Moly D=Acetal EPDM=Ethylene Propylene Diene Monomer F=Cast Iron FBR=Fiber FCM=Forged Chrome-moly FPM=Fluorocarbon NAB=Nickel Aluminum Bronze NBR=Medium Nitrile (Buna-N) NBRs=Buna, Silicone Free NY=Nylon POP=Polypropylene PTFE=Pure Polytetrafluoroethylene PVDF=Polyvinylidene Fluoride S=304SS SS=316SS SSD=Duplex Stainless Steel SFG=Special Blend FPM SSL=316SS/Low Carbon STG=Special Blend PTFE White STL=Steel STCP=Steel/Chrome Plated STZP=Steel/Zinc Plated SSZZ=316SS/Zamak TNM=Special High Strength ZP=Zinc Plated



Models 3520, 3520C, 3521, 3521C, 3527



Model 3520C shown

- |   |   |
|---|---|
| <ul style="list-style-type: none"> <li>1 Die cast aluminum <b>crankcase</b> means high strength, light weight, and excellent tolerance control.</li> <li>2 Oversized crankshaft <b>bearings</b> provide extended bearing life and pump performance.</li> <li>3 Chrome-moly <b>crankshaft</b> provides unmatched strength and surface hardness for long life.</li> <li>4 Matched oversized TNM <b>connecting rods</b> noted for superior tensile strength and bearing quality.</li> <li>5 Special stainless steel <b>plunger rods</b> with high strength crossheads for longevity and corrosion resistance.</li> </ul> | <ul style="list-style-type: none"> <li>6 The stainless steel <b>slinger</b> provides back-up protection for the crankcase seal, keeping pumped liquids out of the crankcase.</li> <li>7 Special concentric, high-density, polished, solid ceramic <b>plungers</b> provide a true wear surface and extended seal life.</li> <li>8 <b>Manifolds</b> are a high tensile strength forged brass, 316 stainless steel, duplex stainless or nickel aluminum bronze for long term, continuous duty.</li> <li>9 100% wet <b>seal</b> design adds to service life by allowing pumped liquids to cool and lubricate on both sides.</li> <li>10 Stainless steel <b>valves, seats and springs</b> provide corrosion-resistance, ultimate seating and extended life.</li> <li>11 Specially formulated, CAT PUMP exclusive, <b>V-Packings</b> offer unmatched performance and seal life.</li> <li>12 <b>Crossheads</b> are 360° supported for uncompromising alignment.</li> <li>13 Optional special <b>ported Flushed Inlet Manifold</b> permits external flush for lubricating and cooling seals when pumping low lubricity liquids such as DI water or high temperature liquids.</li> </ul> |
|---|---|

Products described hereon are covered by one or more of the following U.S. patents 3558244, 3652188, 3809508, 3920356, 3930756 and 5035580

**World Headquarters**  
**CAT PUMPS**  
 1681 - 94th Lane N.E. Minneapolis, MN 55449-4324  
 Phone (763) 780-5440 — FAX (763) 780-2958  
 e-mail: techsupport@catpumps.com  
 www.catpumps.com

**International Inquiries**  
 FAX (763) 785-4329  
 e-mail: intlsales@catpumps.com



**CAT PUMPS (U.K.) LTD.**  
 1 Fleet Business Park, Sandy Lane, Church Crookham  
 FLEET, Hampshire, GU52 8BF, England  
 Phone Fleet 44 1252-622031 — Fax 44 1252-626655  
 e-mail: sales@catpumps.co.uk

**N.V. CAT PUMPS INTERNATIONAL S.A.**  
 Heiveldekens 6A, B-2550 Kontich, Belgium  
 Phone 32-3-450.71.50 — Fax 32-3-450.71.51  
 e-mail: cpi@catpumps.be www.catpumps.be

**CAT PUMPS DEUTSCHLAND GmbH**  
 Buchwiese 2, D-65510 Idstein, Germany  
 Phone 49 6126-9303 0 — Fax 49 6126-9303 33  
 e-mail: catpumps@t-online.de www.catpumps.de