



Stainless Steel Shut-off Gun

Standard Model **36126**

FEATURES

- Durable high strength, heat resistant body and trigger means longer life, less breakage.
- Contour design and smooth trigger action reduces operator fatigue.
- Quality construction stainless steel ball and seat assures thousands of continuous cycles.
- Special safety-lock prevents unintentional operation.

SELECTION: Select a gun to match your system flow and pressure requirements, temperature and function being performed.

INSTALLATION: Install the appropriate relief valve when using a shut-off gun to avoid pressure spikes when the gun is shut off. Severe damage can occur to your system without this device. DO NOT operate in freezing conditions.

SPECIFICATIONS

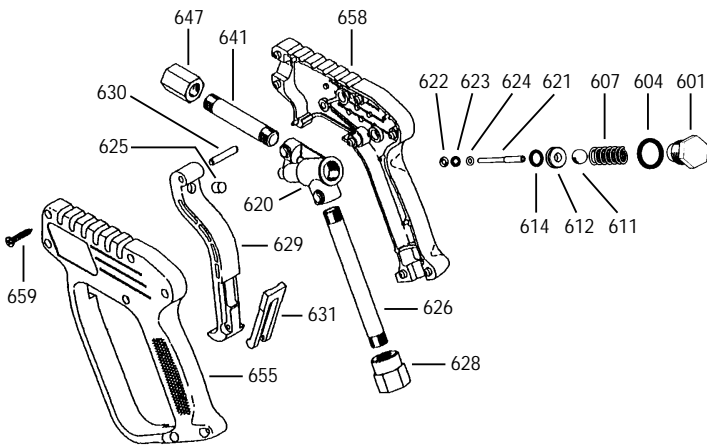
	U.S. Measure	Metric Measure
Maximum Flow	10.5 GPM	(40 L/M)
Maximum Pressure.....	4000 PSI	(275 BAR)
Maximum Temperature.....	300°F	(150°C)
Inlet Port (1)	3/8" NPTF	(3/8" NPTF)
Discharge Port (1).....	1/4" NPTF	(1/4" NPTF)
Weight.....	29.2 oz.	(0.683 kg)
Dimensions	8.03x7.33x1.25"	(204x186x32mm)

Gun is stamped with a European safety pressure. Use only at above specifications to assure proper gun life and performance.

OPERATION: Flow through the gun occurs by squeezing the trigger on the gun. This activates the actuator rod, lifting the ball off the seat, allowing the pumped liquid to flow through the valve body chamber in the gun. Releasing the trigger shuts off the flow.

“Customer confidence is our greatest asset”

EXPLODED VIEW



PARTS LIST

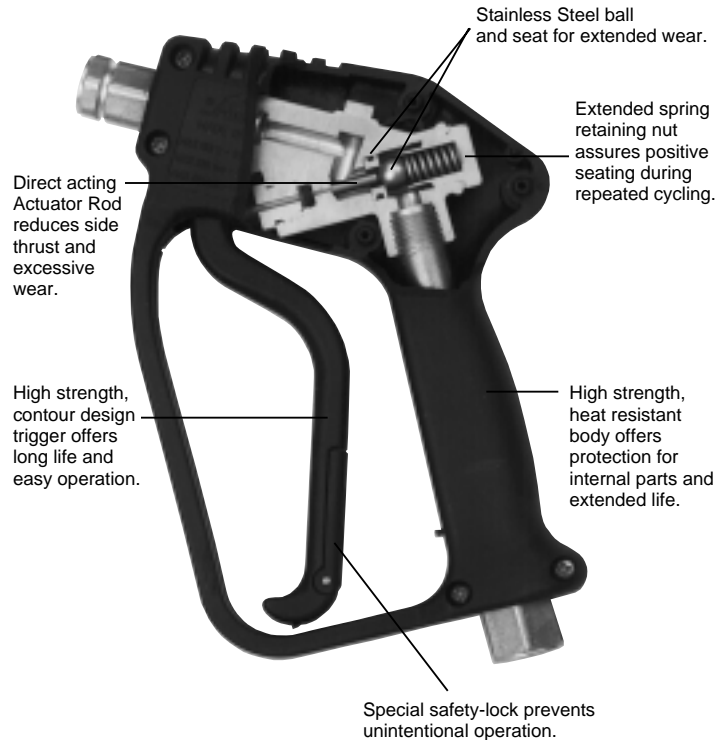
ITEM	PN	MATL	DESCRIPTION	QTY
601	33671	S	Nut, Retaining (M16)	1
604	—	NBR	O-Ring, Nut	1
607	33379	SS	Spring, Ball	1
611	32289	SSSS	Ball	1
612	—	NBR	Seat, w/O-Ring	1
614	—	NBR	O-Ring, Seat	1
620	—	S	Body, Valve	1
621	35073	S	Rod, Actuator, Concave End	1
622	35074	PTFE	Back-up-Ring, Actuator Rod	1
623	35020	FPM	O-Ring, Actuator Rod	1
624	39004	S	Washer	1
625	—	NY	Striker	1
626	—	—	Pipe, Inlet	1
628	39837	SSS	Fitting, Inlet (3/8" NPTF)	1
629	—	NY	Trigger	1
630	—	BB	Pin, Trigger (M5x27)	1
631	—	NY	Latch, Safety (Red)	1
641	—	—	Pipe, Discharge	1
647	39040	SSS	Fitting, Discharge (1/4" NPTF)	1
655	—	NY	Handle, Left Half	1
658	—	NY	Handle, Right Half	1
659	—	STZP	Screws, Self Threading (M3.5x18)	7
665	31400	NY	<i>Handle, Assy (Incls: 655,658,659)</i>	1
667	39629	NY	<i>Trigger, Assy (Incls: 625,629,630,631) [9/97]</i>	1
668	35007	—	<i>Kit, Gun Repair (Incls: 604,611,612,614,621,622,623)</i>	1

Italics are optional items.

MATERIAL CODES (Not Part of Part Number):

BB=Brass FPM=Fluorocarbon NBR=Medium Nitrile (Buna-N) NY=Nylon
 PTFE=Pure Polytetrafluoroethylene S=304SS SS=316SS SSS=416SS
 SSSS=440SS STZP=Steel/Zinc Plated

CUTAWAY



⚠ WARNING

Severe injury can occur with high pressure spray.
 Do not allow spray to contact any part of body.

TROUBLESHOOTING

Water leaking out the discharge of the gun

- Object lodged between the seat and ball.
- Seat worn.
- O-Ring under seat worn.

Water leaking out the lever area

- O-Ring around push rod worn.

OPTIONAL LANCES

32042	Square Insulated Single Lance - S.S.— 36-1/4", 3650 PSI
33200	Square Insulated Dual Lance - S.S.— 43-1/4", 3650 PSI

WARRANTY

90 Day Warranty

Refer to complete CAT PUMPS Warranty for further information.

Products described hereon are covered by one or more of the following U.S. patents 3558244, 3652188, 3809508, 3920356, 3930756 and 5035580

World Headquarters

CAT PUMPS

1681 - 94th Lane N.E. Minneapolis, MN 55449-4324

Phone (763) 780-5440 — FAX (763) 780-2958

e-mail: techsupport@catpumps.com

www.catpumps.com

International Inquiries

FAX (763) 785-4329

e-mail: intl@catpumps.com



The Pumps with Nine Lives

CAT PUMPS (U.K.) LTD.

1 Fleet Business Park, Sandy Lane, Church Crookham

FLEET, Hampshire, GU52 8BF, England

Phone Fleet 44 1252-622031 — Fax 44 1252-626655

e-mail: sales@catpumps.co.uk

N.V. CAT PUMPS INTERNATIONAL S.A.

Heiveldekens 6A, B-2550 Kontich, Belgium

Phone 32-3-450.71.50 — Fax 32-3-450.71.51

e-mail: cpi@catpumps.be www.catpumps.be

CAT PUMPS DEUTSCHLAND GmbH

Buchwiese 2, D-65510 Idstein, Germany

Phone 49 6126-9303 0 — Fax 49 6126-9303 33

e-mail: catpumps@t-online.de www.catpumps.de