

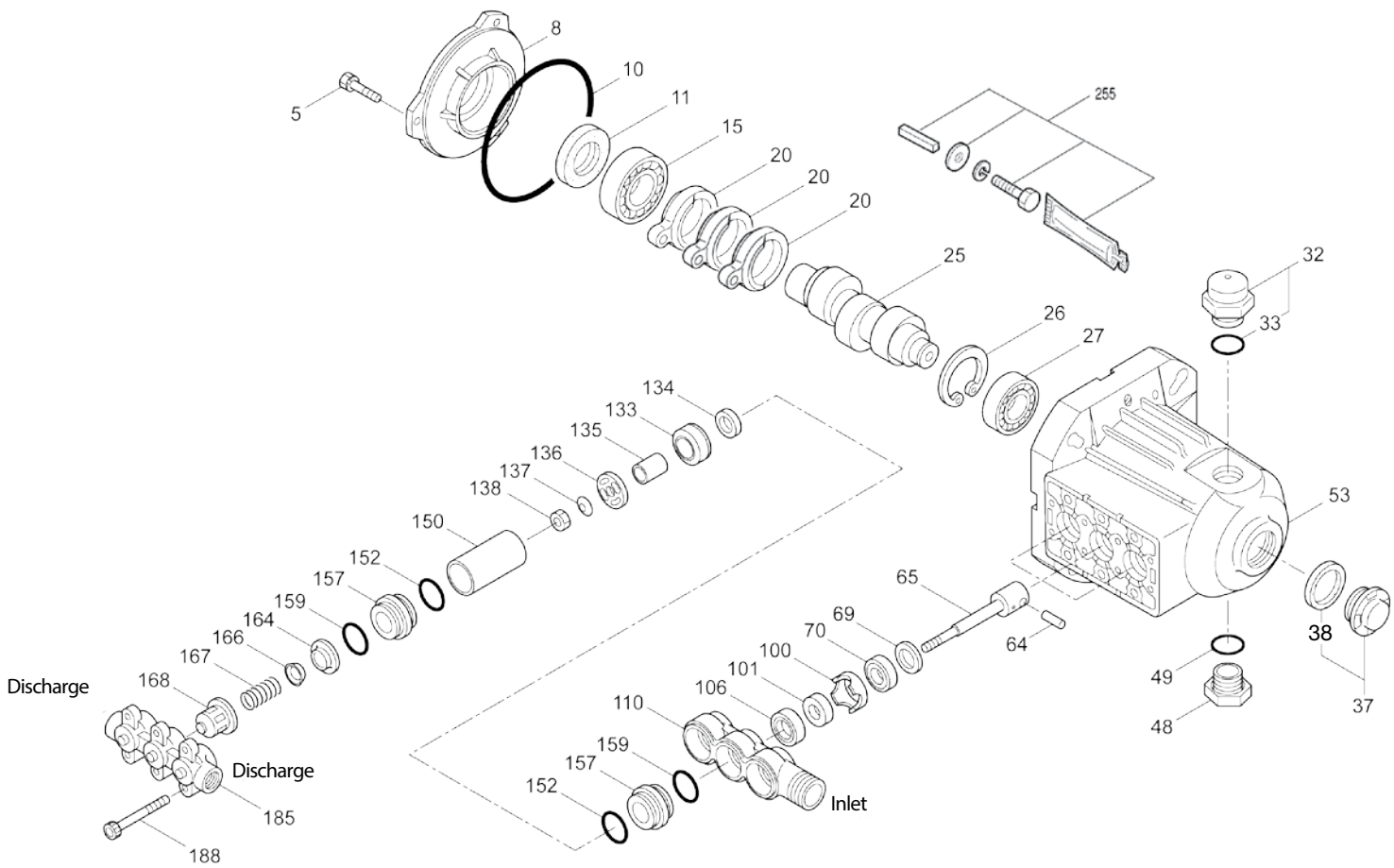
MODEL 2SFP500EL



SPECIFICATIONS	U.S. Measure	Metric Measure
Flow	5.0 gpm	18.9 lpm
Max. Discharge Pressure	500 psi	35 bar
Pump RPM	1750 rpm	1750 rpm
Inlet Pressure Range	Flooded to 75 psi	Flooded to 5.2 bar
Max. Liquid Temperature	160° F	71° C
Above 130°F call Cat Pumps for inlet conditions and elastomer recommendations.		
Bore	0.984"	25 mm

SPECIFICATIONS	U.S. Measure	Metric Measure
Stroke	0.335"	8.5 mm
Crankcase Capacity	10.1 oz.	0.3 l
Inlet Ports (1)	3/4" NPT(F)	3/4" NPT(F)
Discharge Ports (2)	3/8" NPT(F)	3/8" NPT(F)
Shaft Dia. (Hollow Shaft)	5/8"	15.9 mm
Weight	9.5 lbs.	4.3 kg
Dimensions	5.28 x 6.77 x 10.04"	134 x 172 x 255 mm

EXPLODED VIEW



PARTS LIST

ITEM PN	MATL	DESCRIPTION	QTY	ITEM PN	MATL	DESCRIPTION	QTY
5	549360	STCP R Screw, HH (M6x 14)	3	110	832065	FBB Manifold, Inlet	1
8	547153	AL Cover, Bearing, Inner	1	133	116121	FPM Cup-Piston, Machined	3
10	14041	NBR O-Ring, Bearing Cover - 70D	1	134	14122	S Valve, Inlet	3
11	55337	NBR Seal, Oil	1	135	832085	S Spacer, Piston	3
15	14488	STL Bearing, Ball, Inner	1	136	119917	S Retainer, Piston	3
20	547046	TNM Rod, Connecting	3	137	27006	S Washer, Conical (M6)	3
25	45914	CM Crankshaft, 5/8", 8.5mm	1	138	46365	S Nut, w/Nylon Insert (M6)	3
26	12385	STL Ring, Retaining	1	150	541811	SCP Cylinder	3
27	15710	STL Bearing, Ball, Outer	1	152	15862	NBR O-Ring, Adapter, Inner - 70D	6
32	547961	RTP Cap, Oil Filler w/O-Ring	1	157	546617	BB Adapter w/O-Ring	6
33	14179	NBR O-Ring, Oil Filler Cap - 70D	1	159	23172	NBR O-Ring, Adapter, Outer - 70D	6
37	92241	— Gauge, Bubble Oil w/Gasket - 80D	1	164	44881	S Seat	3
38	44428	NBR Gasket, Flat Flex., Oil Gauge - 80D	1	166	548608	S Valve	3
48	44842	NY Plug, Drain [1/2" NPT(M)]	1	167	541062	S Spring	3
49	14179	NBR O-Ring, Drain Plug - 70D	1	168	44565	PVDF Retainer, Spring	3
53	547285	AL Crankcase	1	185	44879	BB Manifold, Discharge	1
64	16948	CM Pin, Crosshead	3	188	549358	STZP Screw, HSH (M8x110)	6
65	830366	SZZ Rod, Piston	3	255	30517	STZP R Assy, Bolt Mount	1
69	126259	STCP R Washer (M24)	3	285	80228	STL Screw (M8-1.25x80) (Not Shown)	2
70	25461	NBR Seal, Oil	3	300	76830	NBR Kit, Seal (Incls: 101,106,133,152, 159)	1
100	44869	PVDF Retainer, Seal	3	310	76835	NBR Kit, Valve (Incls: 152,159,164,166,167,168)	1
101	11402	— Wick	3	—	6107	— Oil, Bottle (21 oz) ISO 68 Hydraulic	1
106	545192	FPM Seal, LPS w/SS-Spg	3	<i>(Fill to specified crankcase capacity prior to start-up)</i>			

Italics are optional items. R Components comply with RoHS Directive.

View Tech Bulletins 002, 024, 036, 043, 055, 074 and 083 for additional information.

NOTE: Discard Key which may come standard with most motors and **use only the key included in this kit.**

MATERIAL CODES (Not Part of Part Number): AL=Aluminum BB=Brass CM=Chrome-Moly FBB=Forged Brass FCM=Forged Chrome-moly FPM=Fluorocarbon
 NBR=Medium Nitrile (Buna-N) NY=Nylon PVDF=Polyvinylidene Fluoride RTP=Reinforced Composite S=304SS SCP=304SS/Chrome Plated STL=Steel
 STCP=Steel/Chrome Plated STZP=Steel/Zinc Plated SZZ=304SS/Zamak TNM=Special High Strength

⚠ CAUTIONS AND WARNINGS

All High-Pressure Systems require a primary pressure regulating device (i.e. regulator, unloader) and a secondary pressure relief device (i.e. pop-off valve, relief valve). Failure to install such relief devices could result in personal injury or damage to pump or property. Cat Pumps does not assume any liability or responsibility for the operation of a customer's high pressure system.

Read all CAUTIONS and WARNINGS before commencing service or operation of any high pressure system. The CAUTIONS and WARNINGS are included in each service manual and with each Accessory Data sheet. CAUTIONS and WARNINGS can also be viewed online at www.catpumps.com/cautions-warnings or can be requested directly from Cat Pumps.

WARRANTY

View the Limited Warranty on-line at www.catpumps.com/warranty.



CAT PUMPS

1681 - 94th Lane N.E. Minneapolis, MN 55449-4324

Phone (763) 780-5440 · Fax (763) 780-2958 · e-mail: techsupport@catpumps.com · www.catpumps.com