

# MODEL 6841KM.CO<sub>2</sub>



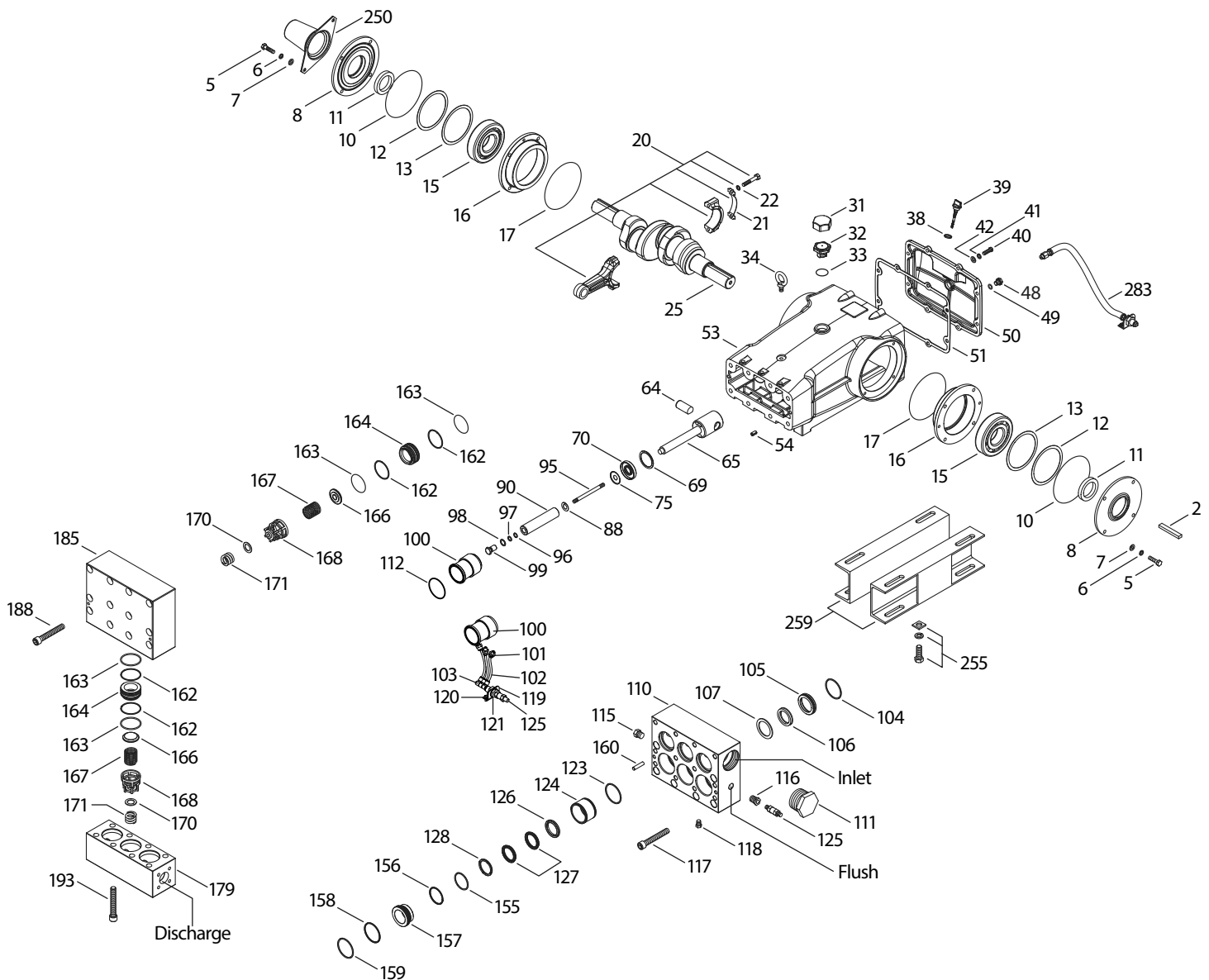
SPECIFICATIONS	U.S. Measure	Metric Measure
Flow	30.0 gpm	113.6 lpm
Pressure Range	400 to 2000 psi	27.6 to 138 bar
*Max. RPM	450 rpm	450 rpm
**Inlet Pressure Range	300 to 800 psi	21 to 55 bar
**Min. Liquid Temperature	-20°F	-29°C
Bore	1.772"	45mm
Stroke	2.579"	65.5mm

SPECIFICATIONS	U.S. Measure	Metric Measure
Crankcase Capacity	10 Qts.	9.5 l
Inlet Ports (2)	2-1/2" NPT(F)	2-1/2" NPT(F)
Flushing Ports (2)	1/2" NPT(F)	1/2" NPT(F)
Discharge Ports (2)	1-1/4" NPT(F)	1-1/4" NPT(F)
Shaft Diameter	1.772"	45mm
Weight	355 lbs.	161 kg
Dimensions	29.66 x 24.02 x 12.00"	753 x 610 x 305mm

\* Pump minimum is 100 RPM.

\*\* Temperature and pressure must be maintained to keep incoming CO<sub>2</sub> in a liquid state.

## EXPLODED VIEW



## PARTS LIST

ITEM PN	MATL	DESCRIPTION	QTY	ITEM PN	MATL	DESCRIPTION	QTY
2	43048	STL Key (M14x9x90)	1	106	703359	SFTB Seal, LPS, w/SS-Spg	3
5	89728	S Screw, HH (M10x40)	8	107	701356	SS Washer, LPS	3
6	15847	S Lockwasher (M10)	8	110	701343	SS Manifold, Inlet - Block-Style, Flushed	1
7	19934	S Washer, Flat (M10)	8	111	701353	SS Plug, Inlet Manifold [2-1/2"NPT(M)]	1
8	29443	AL Cover, Bearing, Outer (See Tech Bulletin 118)	2	112	12392	NBR O-Ring, Seal Retainer - 70D	3
10	29444	NBR O-Ring, Bearing Cover - 70D	2	115	45156	SS Plug, Hex Head [1/2" NPT(M)]	1
11	11443	NBR Seal, Oil, Crankshaft - 70D	2	116	998032	SS Bushing [1/2"NPT(M) x 1/4" NPT(M)]	1
12	126594	STCP R Washer, Shim (M120x0.3)	0-2	117	89694	S Screw, HSH (M16x110)	6
13	126595	STCP R Washer, Shim (M120x0.5)	0-2	118	701077	SS Plug [1/4" NPT(M)]	3
15	29441	STL Bearing, Roller	2	119	34347	STZP Bracket	1
16	29442	STL Cover, Bearing, Inner	2	120	990776	STZP R Screw, HHC (1/4" - 20 x 1/2")	2
17	29444	NBR O-Ring, Bearing Cover - 70D	2	121	34338	BB Union, [1/4"NPT(M)]	1
20	766612	BBHS Assembly, Connecting Rod (Incls: 21, 22)	3	123	18178	NBR O-Ring, V-Packing Cylinder - 80D	3
21	126560	STCP R Washer, Locking	3	124	701357	SS Cylinder, V-Packing	3
22	126593	STCP R Washer, Shim (M10.5x1.5)	6	125	33937	SS Valve, Check [1/4"NPT(M)]	2
25	29440	FCM Crankshaft, Dual Shaft	1	126	701358	SS Adapter, Female	3
31	828710	PE Protector, Oil Cap w/Foam Gasket	1	127	104450	STG V-Packing	6
32	43211	ABS Cap, Oil Filler	1	128	701359	SS Adapter, Male	3
33	14177	NBR O-Ring, Filler Cap - 70D	1	155	701978	NBR O-Ring, V-Packing Spacer, Inner	3
34	126743	STCP R Bolt, Eye (M12) (For Lifting Pump Only)	1	156	701361	PTFE Backup-Ring, V-Packing Spacer, Inner	3
38	129343	RBR Gasket, Flat Flex	1	157	701362	SS Spacer, V-Packing w/Coil Springs	3
39	27769	ABS Stick, Dip	1	158	701363	PTFE Backup-Ring, V-Packing Spacer, Outer	3
40	89627	S Screw, HH (M10x30)	8	159	18178	NBR O-Ring, V-Packing Spacer, Outer - 80D	3
41	15847	S Lockwasher (M10)	8	160	44756	S Pin, Guide	2
42	19934	S Washer, Flat (M10)	8	162	23116	PTFE Backup-Ring, Seat	12
48	25625	STCP Plug, Drain (1/4"x19BSP)	1	163	12392	NBR O-Ring, Seat - 70D	12
49	23170	NBR O-Ring, Drain Plug - 70D	1	164	46173	SS Seat	6
50	29438	AL Cover, Rear (See Tech Bulletin 118)	1	166	44774	SS Valve	6
51	129386	NBR Gasket, Rear Cover	1	167	44773	SS Spring	6
53	45303	AL Crankcase (Incls: 34, 54) (See Tech Bulletin 118)	1	168	44775	PVDF Retainer, Spring	6
54	43282	S Pin, Guide	2	170	44776	SS Washer, Retainer	6
64	769481	CM Pin, Crosshead	3	171	701354	SS Spring, Coil Retainer	6
65	76384	SSZZ Rod, Plunger	3	179	46176	SS Manifold, Discharge - Block Style	1
69	126588	STCP R Washer, Oil Seal	3	185	46171	SS Manifold, Valve - Block-Style	1
70	29454	NBR Seal, Oil Crankcase - 80D	3	188	89694	S Screw, HSH (M16x110), lower	12
88	45677	SS Washer, Keyhole (M16)	3	193	89694	S Screw, HSH (M16x110), Upper	8
90	45672	CC Plunger (M45x185)	3	250	29445	AL Protector, Shaft (See Tech Bulletin 118)	1
95	44748	SS Stud, Plunger Retainer (M14x147)	3	255	33243	STZP Kit, Mount (Included w/Pump)	1
96	20214	PTFE Back-up-Ring, Plunger Retainer	3	259	126604	STCP R Rail, Box (Included w/Pump)	2
97	17616	NBR O-Ring, Plunger Retainer - 80D	3	275	990014	STL Hub, "B", M45 w/Keyway [See Tech Bulletin 003]	1
98	44751	SS Gasket, Plunger Retainer	3	283	34314	— Kit, Oil Drain (3/8" x 48")	1
99	44750	SS Retainer, Plunger (M14)	3	290	6124	— Gasket, Liquid (3 oz.)	1
100	31224	D Retainer, Seal	3	300	76098	NBR* Kit, Seal (Incls: 97, 104, 106, 123, 127, 155, 156, 158, 159)	1
101	999490	D Adapter, (1/4" x 1/8" NPT)	3	310	34105	NBR Kit, Valve (Incls: 162-164, 166, 167, 168, 170, 171)	2
102	999492	NY Tubing, 1/4" OD	3	—	6105	— Oil, Twin Pack (Two-2.5 Gal) ISO-68 Hydraulic (Fill to specified crankcase capacity prior to start-up)	1
103	999491	PLM Manifold, (3 x 1/4")	1	—	6119	— Lubricant, Antiseize (2 oz.) (See Tech Bulletin 095)	1
104	18178	NBR O-Ring, LPS Adapter - 80D	3				
105	701355	SS Adapter, LPS	3				

\*Review individual parts in each kit for material code identification. Italics are optional items. R Components comply with RoHS Directive.

See Tech Bulletins 024, 036, 074, 083, 084, 087, 095 and 118

MATERIAL CODES (Not Part of Part Number): ABS=ABS Plastic AL=Aluminum BB=Brass BBHS=Brass/High Strength BBNP=Brass/Nickel Plated CC=Ceramic

CM=ChromeMoly D=Acetal FCM=Forged Chrome-Moly NBR=Medium Nitrile (Buna-N) NY=Nylon PE=Polyethylene PLM=Unspecified Poly

PTFE=Pure Polytetrafluoroethylene PVDF=Polyvinylidene Fluoride RBR=Rubber S=304SS SS=316SS SFTB=Special Blend Black

SSZZ=316SSZamak STCP=Steel/Chrome Plated STG=Special Blend PTFE White

STL=Steel STZP=Steel/Zinc Plated

### CAUTIONS AND WARNINGS

All High-Pressure Systems require a primary pressure regulating device (i.e. regulator, unloader) and a secondary pressure relief device (i.e. pop-off valve, relief valve). Failure to install such relief devices could result in personal injury or damage to pump or property. Cat Pumps does not assume any liability or responsibility for the operation of a customer's high pressure system.

Read all CAUTIONS and WARNINGS before commencing service or operation of any high pressure system. The CAUTIONS and WARNINGS are included in each service manual and with each Accessory Data sheet. CAUTIONS and WARNINGS can also be viewed online at [www.catpumps.com/cautions-warnings](http://www.catpumps.com/cautions-warnings) or can be requested directly from Cat Pumps.

### WARRANTY

View the Limited Warranty on-line at [www.catpumps.com/warranty](http://www.catpumps.com/warranty).



### CAT PUMPS

1681 - 94th Lane N.E. Minneapolis, MN 55449-4324

Phone (763) 780-5440 · Fax (763) 780-2958 · e-mail: [techsupport@catpumps.com](mailto:techsupport@catpumps.com) · [www.catpumps.com](http://www.catpumps.com)