

# MODEL 30.CO2 30RS.CO2



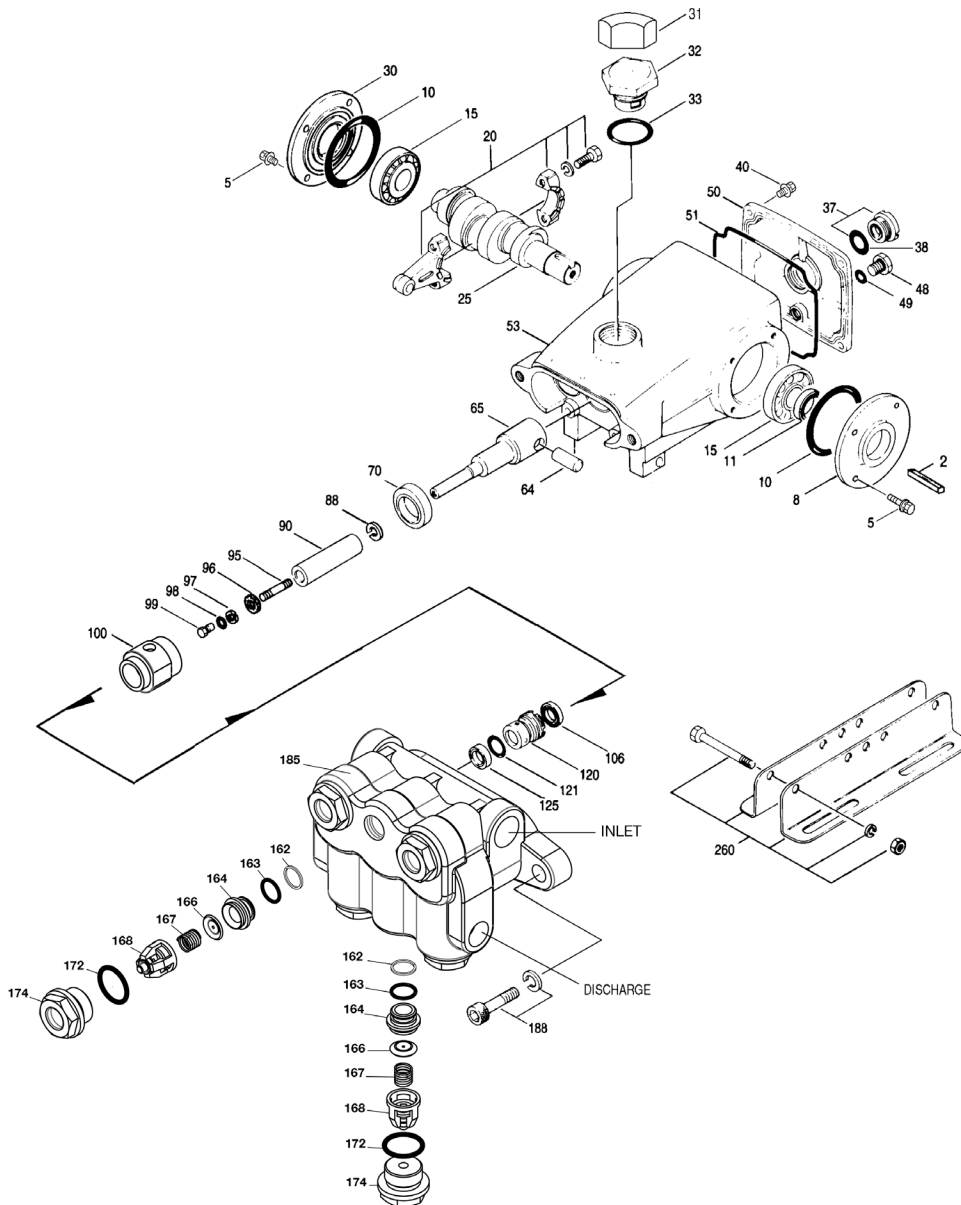
SPECIFICATIONS	U.S. Measure	Metric Measure
Flow	0.68 gpm	6.9 lpm
Pressure Range	100 – 2200 psi	6.9 – 152 bar
Pump RPM*	450 rpm	27.5 rpm
Inlet Pressure Range**	300 – 400 psi	21 – 27.5 bar
Min. Liquid Temperature	-20° F	-29° C
Bore	0.787"	20 mm
Stroke	0.315"	8 mm

SPECIFICATIONS	U.S. Measure	Metric Measure
Crankcase Capacity	18 oz.	0.53 l
Inlet Ports (2)	1/2" NPT(F)	1/2" NPT(F)
Discharge Ports (2)	3/8" NPT(F)	3/8" NPT(F)
Shaft Diameter	0.787"	20 mm
Weight	20.1 lbs.	9.1 kg
Dimensions	11.69 x 8.35 x 5.28"	297 x 212 x 134 mm

\* Pump minimum is 100 RPM

\*\* Temperature and pressure must be maintained to keep incoming CO<sub>2</sub> in a liquid state.

## EXPLODED VIEW



## PARTS LIST

ITEM PN	MATL	DESCRIPTION	QTY
2	30057	STL Key (M6x6x25)	1
5	125824	STCP R Screw, HHC Sems (M6x16)	8
8	43344	AL Cover, Bearing	1
10	43343	NBR O-Ring, Bearing Case - 70D	2
11	43222	NBR Seal, Oil, Crankshaft	1
15	14480	STL Bearing, Ball	2
20	45883	HS Rod, Connecting, Assy	3
25	44923	FCM Crankshaft, Single End (M8)	1
30	44949	AL Cover, Blind Shaft	1
31	828710	PE Protector, Oil Cap w/Foam Gasket	1
32	43211	ABS Cap, Oil Filler	1
33	14177	NBR O-Ring, Filler Cap - 70D	1
37	92241	PC Gauge, Oil, Bubble w/Gasket - 80D	1
38	44428	NBR Gasket, Flat, Oil Gauge - 80D	1
40	126541	STCP R Screw, HHC Sems (M6x20)	4
48	25625	STCP Plug, Drain (1/4"x19BSP)	1
49	23170	NBR O-Ring, Drain Plug - 70D	1
50	48772	AL Cover, Rear	1
51	48773	NBR O-Ring, Crankcase Cover	1
53	48769	AL Crankcase	1
64	43351	CM Pin, Crosshead	3
65	45908	ZZCP Rod, Plunger, Short	3
70	43228	NBR Seal, Oil, Crankcase	3
88	45697	S Washer, Keyhole (M18 x M10)	3
90	43367	CC Plunger (M20x72)	3
95	126558	STCP R Stud, Plunger Retainer (M6x64.5)	3
96	43235	PTFE Back-up-Ring, Plunger Retainer	3
97	17399	NBR O-Ring, Plunger Retainer - 80D	3

ITEM PN	MATL	DESCRIPTION	QTY
98	45891	CU Gasket	3
99	46504	S Retainer, Plunger (M6)	3
100	701765	SS Retainer, Seal	3
106	701763	SFTA Seal, LPS w/NIH-Spg	3
120	45679	BB Case, Seal	3
121	14200	NBR O-Ring, Seal Case - 70D	3
125	701764	SFTA Seal, HPS w/SS	3
139	22179	BBCP Plug, Inlet [1/2" NPT(M) Not Shown]	1
162	48361	D Back-up-Ring, Seat	6
163	43358	NBR O-Ring, Seat - 70D	6
164	43725	S Seat	6
166	43723	S Valve	6
167	43750	S Spring	6
168	44565	PVDF Retainer, Spring	6
172	17615	NBR O-Ring, Valve Plug - 75D	6
174	46756	BB Plug, Valve	6
185	† 44837	BBCP Head, Manifold	1
188	126520	STCP R Screw, HSH Sems (M10x35)	2
196	43633	BB Plug, Discharge, [3/8" NPT(M) Not Shown]	1
260	30611	STZP R Rail Mounting, Angle - B	1
270	30633	STL Pulley & Key Assy (Incls: 30058, 30057)	1
275	30944	STL "H" Hub & Key Assy (Incls: 30945, 30057)	1
300	76152	NBR* Kit, Seal (Incls: 97,106,121,125)	1
310	30821	NBR Kit, Valve (Incls: 162,163,164,166,167,168,172)	2
350	30696	STZP Plier, Reverse (Not Shown)	1
351	33004	STZP Seal Case Socket, 1/2" Drive (Not Shown)	1
—	6107	— Oil, Bottle (21 oz.) ISO 68 Hydraulic (Fill to specified crankcase capacity prior to start-up)	1

*Italics are optional items.*

[] Date of latest production change. R Components comply with RoHS Directive.

† Production parts different from service parts. For additional technical information see [www.catpumps.com/literature/tech-bulletins](http://www.catpumps.com/literature/tech-bulletins).

MATERIAL CODES (Not Part of Part Number): ALE=Aluminum Epoxy BB=Brass CC=Ceramic CM=Chrome-Moly CU=Copper FBB=Forged Brass FCM=Forged Chrome-Moly  
 NBR=Medium Nitrile (Buna-N) PC=Poly Carbonate PE=Polyethylene POP=Polypropylene PTFE=Pure Polytetrafluoroethylene PVDF=Polyvinylidene Fluoride  
 RTP=Reinforced Composite S=304SS SHS=304SS/High Strength STCP=Steel/Chrome Plated STL=Steel TNM=Special High Strength

### ⚠ CAUTIONS AND WARNINGS

All High-Pressure Systems require a primary pressure regulating device (i.e. regulator, unloader) and a secondary pressure relief device (i.e. pop-off valve, relief valve). Failure to install such relief devices could result in personal injury or damage to pump or property. Cat Pumps does not assume any liability or responsibility for the operation of a customer's high-pressure system.

Read all CAUTIONS and WARNINGS before commencing service or operation of any high-pressure system. The CAUTIONS and WARNINGS are included in each Service Manual and with each Accessory Data sheet. CAUTIONS and WARNINGS can also be viewed online at [www.catpumps.com/cautions-warnings](http://www.catpumps.com/cautions-warnings) or can be requested directly from Cat Pumps.

### WARRANTY

View the Limited Warranty on-line at [www.catpumps.com/warranty](http://www.catpumps.com/warranty).