

TECH BULLETIN 078



5CP to General/Interpump Retrofit Mounting

When replacing a General Pump/Interpump 47 Series pump with a 5CP Series pump, a special mounting rail kit (PN 30637) will be required to allow for a direct replacement within the same footprint.

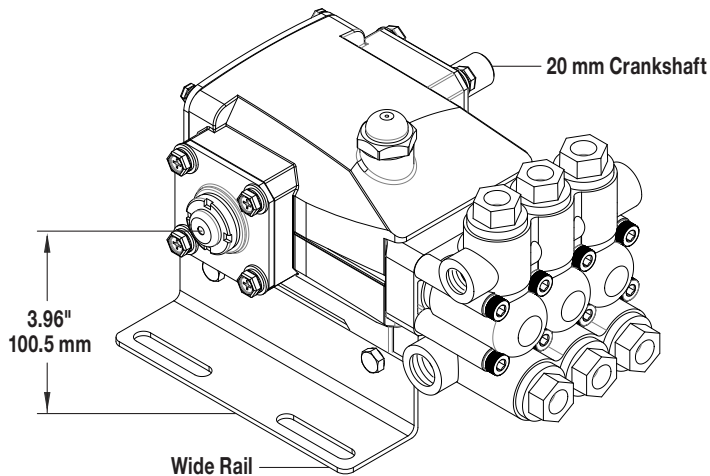
The 30637 mounting kit comes with two different mounting rails, one narrow and one wide, which will align the new 5CP pump with the previous pump's mounting location. The kit also includes mounting hardware to attach the pump to the mounting rails.

In addition to the mounting rails, there is also a difference in the diameter of the crankshaft. The 5CP Series pumps have a 20 mm crankshaft and the General/Interpump 47 Series has a 24 mm crankshaft, which requires the pump pulley's hub and the key to be replaced. If you currently have an "H" style pulley, you can replace your existing 24 mm hub with our 20 mm hub and key assembly (PN 30944) and continue to use your existing pulley.

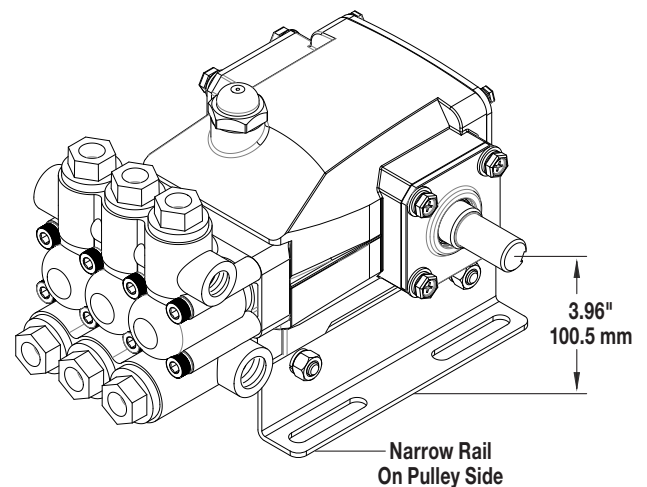
The 47 Series covers the following models:

T1011, TS1011, TS1021, T1511, TS1511, T2011, TS2011 and TS2021

Wide Rail Side



Narrow Rail Side



Cat Pumps

Technical Services Department

99TCH078 Rev A 19325 4/20