



Reverse Osmosis Products

Corrosion-Resistant Products for Superior Life and Dependability



Product Quality, Reliability and Support You Expect

www.catpumps.com



Outperforms the Competition

Cat Pumps has earned the reputation as the industry leader for high-pressure pumps due to long product life and dependable performance. Our commitment to produce the highest-quality, longest lasting products is supported by maintaining a rigorous zero defect quality assurance program to guarantee consistently high quality products — every time.

Global Presence and Worldwide Acceptance

Reverse Osmosis is a critical process for environmental considerations, food & beverage production and drinking water.

Environmental Applications:

- Industrial Waste Water Treatment
- Leachate Treatment
- Municipalities
- Produced Water Treatment

Food & Beverage Applications:

- Vinegar Purification
- Wine Production
- Water Treatment

Salt Water Reverse Osmosis (SWRO):

- Work and Pleasure Boats
- Resorts
- Off-shore Platforms
- Military

With operations in the United States, United Kingdom, Belgium, Germany, and a distribution network covering the globe, Cat Pumps products and service are everywhere you need them to be.



Products and Service You Can Count On

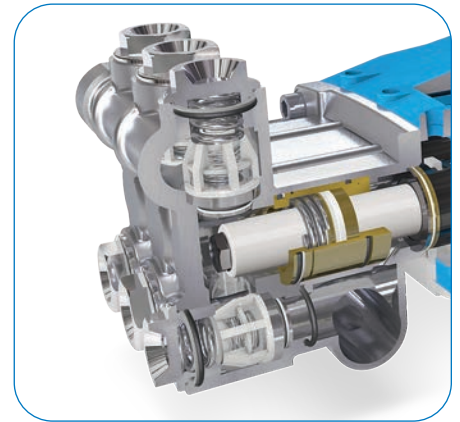
In addition to receiving the highest quality products available, Cat Pumps customers also benefit from the following services:

- Pumps and repair parts are stock items with 99% order fill rate and ship within 24 hours
- Worldwide sales and distribution channels stocking genuine Cat Pumps products
- Engineering and technical support for product selection, installation, maintenance, and troubleshooting. Contact Cat Pumps for more information.

Quality You Need to Keep Your Equipment Running

Cat Pumps designs and builds products to the highest quality levels. Every last design detail is optimized for product life and performance. Examples include the following features:

- Specially formulated seals and high density, polished ceramic plungers typify the attention to design detail that results in thousands of hours of trouble-free service
- Stainless steel valves, seats and springs provide corrosion resistance, positive seating and long life
- Wet seal design increases service life by allowing pumped fluids to cool and lubricate the elastomers on both sides



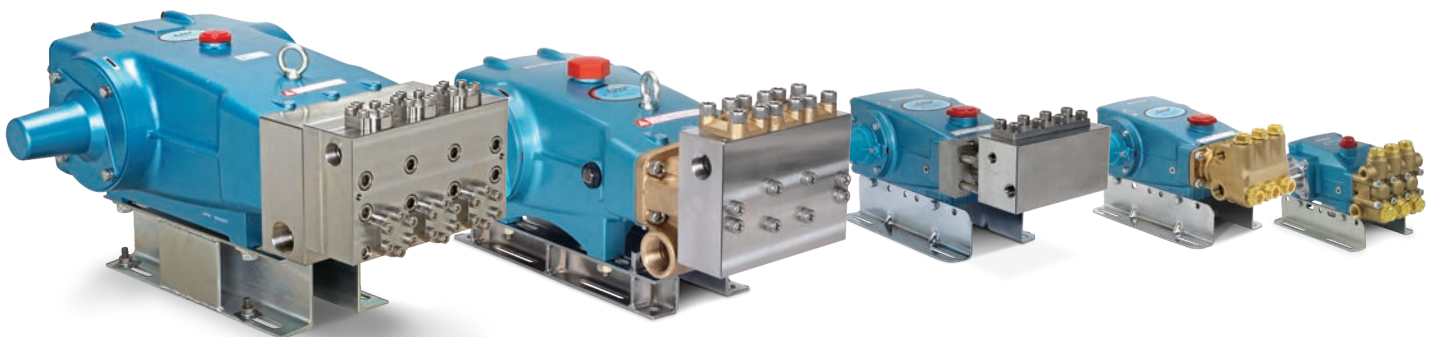
Product Specification Range

A wide range of pump options are available, including a variety of products that meet industry certifications and directives.

- Flow: 0.13 to 240 gpm (0.49 to 908 lpm)
- Pressure: 100 to 10,000 psi (6.9 to 689 bar)
- RPM: 100 to 3450
- Liquid Temperature: -10° to 200°F (-23° to 93°C)
- Manifold Materials: Nickel Aluminum Bronze, 304 and 316 Stainless Steel, Duplex Stainless Steel. Other materials available on request
- Sealing Material: NBR, FPM, EPDM, PTFE, silicone-free and other materials available upon request
- Drives: Electric, Engine, Hydraulic, Pneumatic



Model 6762
60 gpm (227 lpm), 1200 psi (83 bar)



Plunger Pumps



Model 2SFQ42SEEL
with NEMA Motor

316 STAINLESS STEEL MANIFOLD

Direct Drive – Hollow Shaft, NEMA 56C

PUMP MODEL	RATED FLOW		RATED PRESSURE		RPM	AT 1000 PSI (69 BAR)	
	GPM	LPM	PSI	BAR		HP	KW
2SF05SEEL	0.5	1.9	1200	83	1725	0.3	0.2
2SF10SEEL	1.0	3.8	1200	83	1725	0.7	0.5
2SF15SEEL	1.5	5.7	1200	83	1725	1.0	0.8
2SF22SEEL	2.2	8.3	1200	83	1725	1.5	2.2
2SFQ25SEEL	2.5	9.5	1200	83	1725	1.7	1.3
2SFQ29SEEL	2.9	10.8	1200	83	1725	2.0	1.5
2SFQ35SEEL	3.5	13.2	1200	83	1725	2.4	1.8
2SFQ42SEEL	4.2	15.9	1200	83	1725	2.9	2.2

316 STAINLESS STEEL MANIFOLD

Direct Drive – Solid Shaft, Bell House, NEMA, IEC or SAE

PUMP MODEL	RATED FLOW		RATED PRESSURE		RPM	AT 1000 PSI (69 BAR)	
	GPM	LPM	PSI	BAR		HP	KW
3CP1231	2.3	8.7	2000	138	1725	1.6	1.2
3CP1241	3.6	13.6	2000	138	1725	2.5	1.8
5CPQ6241CS	4.0	15.1	2000	138	1725	2.7	2.0
3CP1221	4.2	15.9	2000	138	1725	2.9	2.1
3CP1211CS	5.0	19	1700	117	1750	3.4	2.6
5CPQ6251	5.0	18.9	2000	138	1725	3.4	2.6
5CPQ6261CSS	5.5	20.4	2000	138	1725	3.8	2.9
5CPQ6271CSS	6.6	25.1	1800	124	1725	4.5	3.4
5CPQ6221	7.4	28	1200	83	1725	5.1	3.8
7CP6111CS	10.5	39.7	2000	138	1725	7.2	5.4



Model 3CP1221
with Bell Housing and NEMA Motor

NICKEL ALUMINUM BRONZE MANIFOLD

Direct Drive – Solid Shaft, Bell House, NEMA, IEC or SAE

PUMP MODEL	RATED FLOW		RATED PRESSURE		RPM	AT 1000 PSI (69 BAR)	
	GPM	LPM	PSI	BAR		HP	KW
237	2.3	8.7	1500	103	1725	1.6	1.2
247	3.6	13.6	1200	83	1725	2.5	1.8
347	4.0	15.1	1800	124	1725	2.7	2.0
277	4.2	15.9	1000	69	1725	2.9	2.1
357	5.0	18.9	1500	103	1725	3.4	2.6



Model 277
with Bell Housing and NEMA Motor

316 STAINLESS STEEL MANIFOLD

Gearbox Drive ¾", 1" and 1 ½"

PUMP MODEL	RATED FLOW		RATED PRESSURE		ENGINE RPM	SHAFT	AT 1000 PSI (69 BAR)
	GPM	LPM	PSI	BAR			HP*
3CP1241G	3.0	11.4	2000	138	3600	¾"	2.6
3CP1221G	3.5	13.2	1500	103	3600	¾"	3.0
3CP1211G	3.8	14.4	1500	103	3400	¾"	3.3
5CPQ6241CSG1	4.0	15.1	2000	138	3600	1"	3.4
5CPQ6251G1	5.0	18.9	2000	138	3600	1"	4.3
5CPQ6221G1	7.4	28.0	1200	83	3600	1"	6.4
7CP6111CSG1	10.0	37.9	2000	83	3400	1"	8.6

Note: All 1" Gearboxes are also available in 1 ½" size (G118). Pump models listed include pump and gearbox

*Typical gas engine



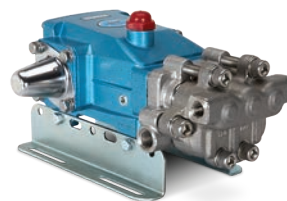
Model 3CP1211G
with Gearbox and Gas Engine

Plunger Pumps

316 STAINLESS STEEL MANIFOLD

Solid Shaft

PUMP MODEL	RATED FLOW		RATED PRESSURE		RPM	AT 1000 PSI (69 BAR)	
	GPM	LPM	PSI	BAR		HP	KW
311	5.0	18.9	1500	103	1190	3.4	2.6
5CPQ6221	6.0	22.7	2000	138	1400	4.1	3.1
1051	10.0	37.9	2200	152	958	6.8	5.1
7CP6171CS	10.5	39.7	2000	138	1450	7.2	5.4
1531	15.6	59.0	1500	103	1450	10.7	8.0
1541	18	68.1	1200	83	1100	12.3	9.2
2511	20	75.7	1500	103	1450	13.7	10.2
2531	25	94.6	1200	83	1025	17.1	12.8
3531D	36	136.2	1200	83	800	24.7	18.4
3541D	45	170.3	1000	69	765	30.8	23.0
6761	60	227.0	1200	83	520	41.1	30.7



Model 5CPQ6221



Model 2531

DUPLEX STAINLESS STEEL MANIFOLD

Solid Shaft

PUMP MODEL	RATED FLOW		RATED PRESSURE		RPM	AT 1000 PSI (69 BAR)	
	GPM	LPM	PSI	BAR		HP	KW
1051D	10	37.9	2200	152	958	6.8	5.1
6762	60	227.0	1200	83	520	41.1	30.7
67102	100	378.5	1000	69	680	68.5	51.1
152R060	115	435.3	1200	83	360	78.8	58.8
152R080	200	757.0	1200	83	355	137.0	102.2
152R100	240	908.4	1000	69	270	164.4	122.6



Model 1051D

NICKEL ALUMINUM BRONZE MANIFOLD

Solid Shaft

PUMP MODEL	RATED FLOW		RATED PRESSURE		RPM	AT 1000 PSI (69 BAR)	
	GPM	LPM	PSI	BAR		HP	KW
317	4.0	15.2	220	152	950	2.7	2.0
1057	12	45.4	1800	24	1150	8.2	6.2
2537	25	95	1200	83	1025	17.1	12.8
3537	36	136.2	1200	83	800	24.7	18.5
3547	45	171	1000	69	765	30.8	23.1
6767	60	228	1200	83	520	41.1	30.8



Model 3537

Accessories



PRESSURE REGULATORS

MODEL	FLOW RANGE		PRESSURE RANGE		PORTS	
	GPM	LPM	PSI	BAR	INLET/DISCHARGE	BY-PASS
7001.100	0.5 – 5	1.9 – 18.9	100 – 1000	6.9 – 69	3/8" NPT(F)	1/2" NPT(F)
7011.100	1.0 – 10	3.8 – 38	100 – 1000	6.9 – 69	1/2" NPT(F)	3/4" NPT(F)
7021.100	2.5 – 25	9.5 – 94.6	100 – 1000	6.9 – 69	3/4" NPT(F)	1" NPT(F)
7363	10 – 60	38 – 227	600 – 1800	41 – 124	1" NPT(F)	1 1/4" NPT(F)
7375	10 – 75	38 – 284	100 – 1000	6.9 – 69	1 1/4" NPT(F)	1 1/2" NPT(F)
7410	10 – 100	38 – 378	100 – 1500	6.9 – 103	1 1/2" NPT(F)	2" NPT(F)
890706	15 – 260	57 – 984	250 – 1000	17 – 69	2" NPT(F)	2" NPT(M)



POP-OFF VALVES

MODEL	MAX FLOW		PRESSURE RANGE		PORTS	
	GPM	LPM	PSI	BAR	INLET/DISCHARGE	BY-PASS
9960	6	23	300 – 1500	21 – 103	1/4" NPT(M)	3/4" Barb
9941	25	95	1000 – 4000	69 – 275	3/4" NPT(M)	1" Barb
890710	100	380	300 – 1500	21 – 103	1" NPT(M)	1" NPT(F)
890713	210	795	500 – 4000	35 – 275	2" NPT(M)	2" NPT(F)



CRANKCASE OIL

PART NUMBER	DESCRIPTION
6107	Bottle: 21 Ounces
6100	Case: 12 - 21 ounce bottles
6105	5 Gallon Twin Pack: 2 - 2.5 gallon jugs
6109	Drum: 30 gallons



CLUTCHES

MODEL	OUTSIDE DIAMETER	GROOVES	BELT TYPE	PUMP SHAFT DIAMETER	PUMP MODELS
34960	7"	1	A	16.5 mm	3CP Series
34962	7"	1	A	20 mm	311 – 351, 317 – 357
34970	7"	1	A	20 mm	5CP Series
34965	7"	2	A	16.5 mm	3CP Series
34963	7"	2	A	20 mm	311 – 351, 317 – 357
34980	7"	2	A	20 mm	5CP Series
76980	10"	2	B	20 mm	311 – 351, 317 – 357
76970	10"	2	B	20 mm	5CP Series
30655	12.75"	2	B	30 mm	2511 – 2537
34563	12.75"	2	B	30 mm	1051, 1531, 1541

Accessories

PULSATION DAMPENERS

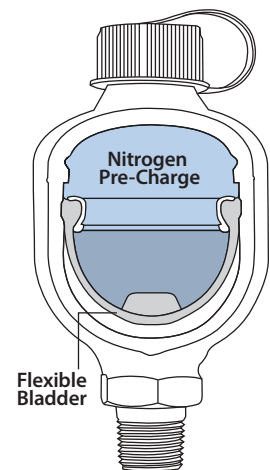
MODEL	MAX FLOW		PRESSURE RANGE		VOLUME CU. IN.	PORTS
	GPM	LPM	PSI	BAR		
6031	15	57	100 – 2400	6.9 – 165	10	½" NPT(M)
6014	25	94.6	100 – 2400	6.9 – 165	20	¾" NPT(M)
6016	40	151	100 – 2000	6.9 – 138	45	1" NPT(M)
6015	70	265	100 – 1500	6.9 – 103	120	1 ¼" NPT(M)
701550	100	378.5	100 – 3365	6.9 – 232	122	1 ½" NPT(F)
701557	320	1211	100 – 1275	6.9 – 88	214	1 ½" NPT(F)



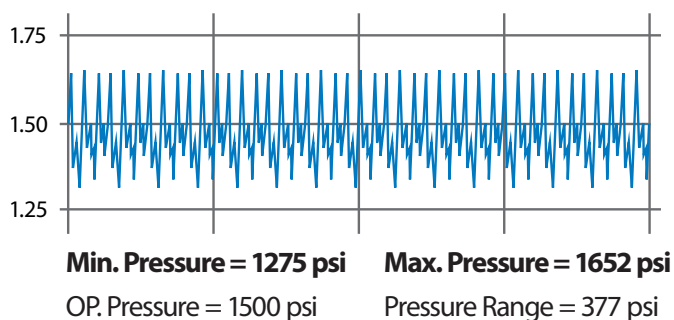
A pulsation dampener contains a dry nitrogen charged bladder that is used to absorb both the high and low fluctuations of pressure produced by a positive displacement pump. A pulsation dampener's bladder not only absorbs the pressure spikes during operation, but due to the nitrogen charged bladder, it pushes flow back into the stream during the low pressure wave, reducing the total fluctuation to 2–3% when properly sized.

Benefits:

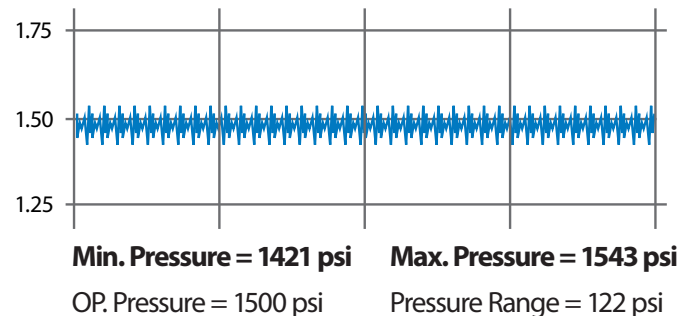
- Produces smooth, consistent flow
- Protects downstream system components (i.e., regulator, unloader, relief valve)
- Reduces water hammer
- Improves performance at low rpm



Model 1531 w/o Pulsation Dampener



Model 1531 with Pulsation Dampener



For best results, the dampeners should be mounted as close to the pump head as possible, preferably in a vertical position. Dampener should be charged at 60% of operating pressure.

Direct Mounting Components

Bell Housings for Motors Provide Assembly Convenience

Cat Pumps bell housings offer a fast and convenient way to mount motors to high-pressure pumps in a direct-drive configuration. Bell housings are available as individual components or assembled as a complete pump/motor assembly. Take advantage of Cat Pumps off-the-shelf service for this highly convenient line of electric and hydraulic motor bell housings.

Features:

- Optimal alignment reduces side-loading for longer life, trouble-free operation
- Compact direct mounting reduces space requirement
- Cast from lightweight, high-strength aluminum alloy
- Ease of assembly reduces fabrication costs
- Slotted housings allow easy access to coupler set screws
- Available as a complete drive package for convenient assembly



Cat Pumps offers a wide variety of bell housings and flex coupler assemblies.



Electric Motor Mount

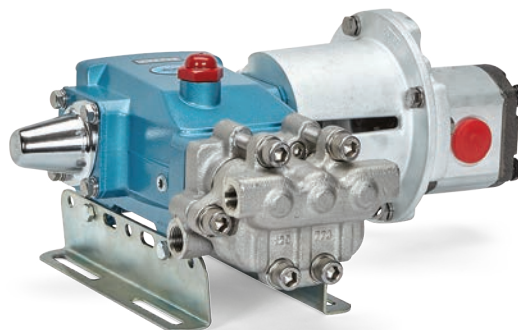
Available for NEMA Motors
56C to 286TC

Available for IEC Motors
90 to 180



Hydraulic Motor Mount

Available for SAE Motor
A – 2 bolt; B – 2 & 4 Bolt; C – 2 & 4 Bolt



Electric, NEMA Mounting Components

BELL HOUSING ASSEMBLY

PUMP SERIES	MODELS	MOTOR FRAME	BELL HOUSING ASSEMBLY
3CP	3CP1221 – 41	56C–145TC	76056.3CP
		182/184TC	76184.3CP
		213/215TC	76215.3CP
3FR	237 – 247	56C–145TC	76056.3FR
		182/184TC	76184.3FR
		213/215TC	76215.3FR
5CP	5CPQ6221 – 5CPQ6251	56C–145TC	76056.5CP
		182/184TC	76184.5CP
		213/215TC	76215.5CP
		254/256TC	76256.5CP
5FR	347 – 357	56C–145TC	76056.FR
		182/184TC	76184.5FR
		213/215TC	76215.5FR
7CP	7CP6111	56C–145TC	76056.CP
		182/184TC	76184.7CP
		213/215TC	76215.7CP
15FR	1051 – 1541	254/256TC	76256.7CP
		213/215TC	76215.15FR
		254/256TC	76256.15FR
		284/286TC	76286.15FR

FLEXIBLE COUPLER ASSEMBLY

PUMP SERIES	MOTOR FRAME	FLEX COUPLER ASSEMBLY	SHAFT TO SHAFT	TORQUE RATING
3CP	56C	8215	16.5mm x 5/8"	27 ft-lbs
	145TC	8210	16.5mm x 7/8"	27 ft-lbs
	182/184TC	8220	16.5mm x 1 1/8"	27 ft-lbs
	182/184TC	8225	16.5mm x 1 1/8"	74 ft-lbs
	213/215TC	8270	16.5mm x 1 3/8"	92 ft-lbs
5CP & 5FR	56C	8261	20mm x 5/8"	74 ft-lbs
	145TC	8260	20mm x 7/8"	74 ft-lbs
	182/184TC	8230	20mm x 1 1/8"	74 ft-lbs
	213/215TC	8275	20mm x 1 3/8"	92 ft-lbs
	245/256TC	8217	20mm x 1 5/8"	150 ft-lbs
7CP	56C – 145TC	8218	24mm x 5/8"	74 ft-lbs
	182/184TC	8370	24mm x 1 1/8"	74 ft-lbs
	213/215TC	8375	24mm x 1 3/8"	74 ft-lbs
	254/256TC	8380	24mm x 1 5/8"	150 ft-lbs
	213/215TC	8388	30mm x 1 3/8"	150 ft-lbs
15FR	254/256TC	8382	30mm x 1 5/8"	150 ft-lbs
	284/286TC	8383	30mm x 1 7/8"	225 ft-lbs

Note: IEC Bell Housing Assemblies and Flex Couplers Assemblies also available, contact Cat Pumps for more information.

Hydraulic, SAE Mounting Components

BELL HOUSING ASSEMBLY

PUMP SERIES	MODELS	SAE TYPE	BELL HOUSING ASSEMBLY
3CP	3CP1221 – 1241	A2	76SAEA2.3CP
		B2	76SAEB2.3CP
		B4	76SAEB4.3CP
3FR	237 – 277	A2	76SAEA2.3FR
		B2	76SAEB2.3FR
		B4	76SAEB4.3FR
5CP	5CPQ6221 – 6251	A2	76SAEA2.5CP
		B2	76SAEB2.5CP
		B4	76SAEB4.5CP
5FR	311, 347 – 357	A2	76SAEA2.5FR
		B2	76SAEB2.5FR
		B4	76SAEB4.5FR
7CP	7CP6111 – 6171	A2	76SAEA2.7CP
		B2	76SAEB2.7CP
		B4	76SAEB4.7CP
15FR	1051 – 1541	B2	76SAEB2.15FR
		B4	76SAEB4.15FR
35FR	3531D – 3541D, 3537 – 3547	C2, C4	76SAEC.35FR

FLEXIBLE COUPLER ASSEMBLY

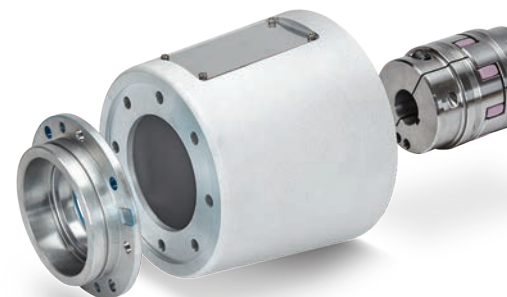
PUMP SERIES	SAE TYPE	FLEX COUPLER ASSEMBLY	SHAFT TO SHAFT	TORQUE RATING
3CP & 3FR	A2	8271	16.5mm x 5/8"	74 ft-lbs
	B2, B4	8272	16.5mm x 7/8"	74 ft-lbs
5CP & 5FR	A2	8273	20mm x 5/8"	74 ft-lbs
	B2, B4	8274	20mm x 7/8"	74 ft-lbs
7CP	A2	8371	24mm x 5/8"	92 ft-lbs
	B2, B4	8372	24mm x 7/8"	92 ft-lbs
15FR	B2, B4	8387	30mm x 7/8"	150 ft-lbs
35FR	C2, C4	999368	35mm x 1 3/8"	350 ft-lbs

Bell Housing Assemblies include mounting hardware and flange SAE TYPE:

A2 = SAE "A" 2 Bolt, 3.25" Pilot

B2 = SAE "B" 2 Bolt, 4" Pilot

B4 = SAE "B" 4 Bolt, 4" Pilot

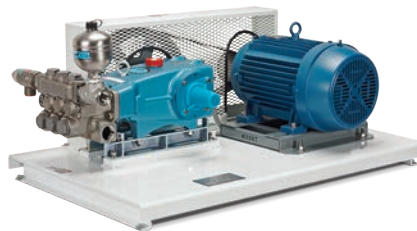


Custom Pumping Systems

Cat Pumps is the industry leader in providing custom-engineered pumping systems to meet a wide range of application needs. By selecting Cat Pumps for your next pumping system, you eliminate the expense of designing, multiple source buying, fabrication and testing. The Cat Pumps technical sales team assists with proper component selection, as well as operation and maintenance support.

All systems are designed, built and performance tested in the Cat Pumps Minneapolis location. To begin the quoting process, call the main office at (763) 780-5440 or submit the custom system quote form at catpumps.com.

With thousands of installations running around the world, Cat Pumps is the supplier of choice for custom pumping systems.



System Configuration

With extensive design experience, Cat Pumps can help determine the best configuration for any application. Common options listed below:

Base

System design starts with choosing the base that best fits the application. Numerous base configurations are available to meet space, portability, sound and material demands.

- Standard • Vertically Stacked • Enclosed • Multiple Pump



Power Source

A qualified technical staff with extensive experience can assist in recommending the correct product for any power source available.

- Electric • Gas • Diesel • Hydraulic • Pneumatic

Drive Package

A wide variety of drive packages are available to complement any power source of choice.

- Belt • Direct Drive • Gearbox • Clutch

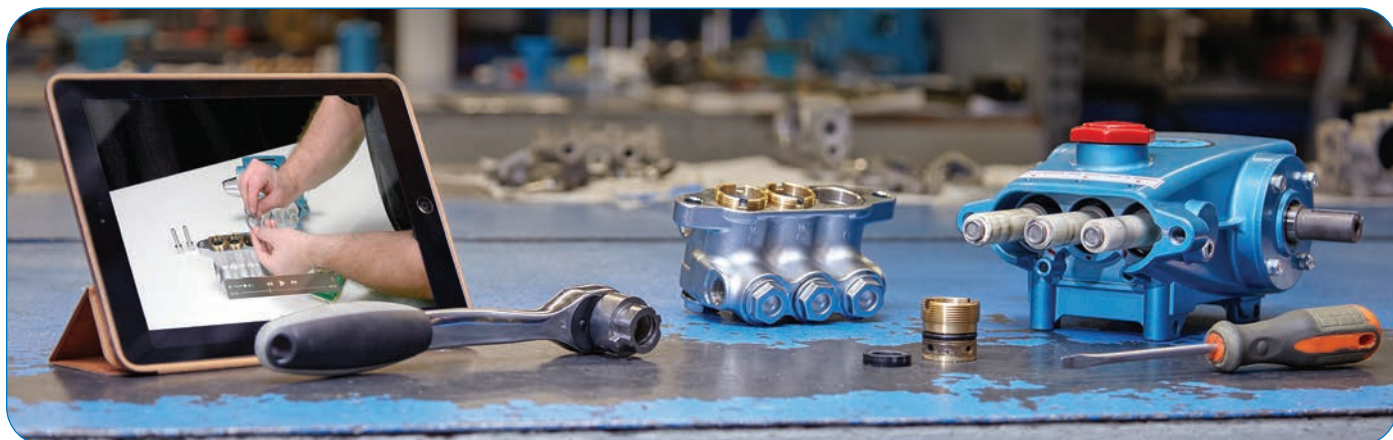
Accessories

Choose from hundreds of high-quality genuine Cat Pumps accessories for optimum system performance and life.

- Regulator • Relief / Pop-off Valve • Pressure Gauge • Pulsation Dampener
- Inlet Filter / Strainer • Oil



Customer Care that Keeps You in Business



Customer Service – Another Cat Pumps Difference

When customers do business with Cat Pumps, they benefit not only from long-lasting dependable products, but also from excellent customer service and support. Cat Pumps customers enjoy the following benefits:

- 99.4% order fill rate, supported by world-class inventory management system
- 99.9% shipping accuracy, which means customers receive what they ordered
- 99.8% of orders ship within 24 hours for fast on-the-job delivery
- Worldwide distribution network stocking genuine Cat Pumps products and parts
- Industry-leading customer service with “live” support, from phone operators to Technical Services
- Experienced staff on call to assist with inquiries, from designing power units to system troubleshooting
- Email sales@catpumps.com for fast response to questions and requests or call (763) 780-5440

Sales and service support is provided by highly qualified distribution network covering the U.S., Canada and Mexico. Cat Pumps has an international presence with sales offices in the U.K., Belgium and Germany as well as a worldwide distribution channel.

Complete, Accurate and Fast Order Shipping

CUSTOMER SERVICE PERFORMANCE
99.4%
Fill Rates

CUSTOMER SERVICE PERFORMANCE
99.9%
Shipping Accuracy

CUSTOMER SERVICE PERFORMANCE
99.8%
On-time Delivery

Pumps and parts are stocked for off-the-shelf delivery. Wherever customers are in the world, Cat Pumps service and support are never far away. Long-lasting products backed by excellent customer service are why Cat Pumps is the best choice for high-pressure pumps and systems.

ABOUT CAT PUMPS

Proven Quality, Customer Focused

Cat Pumps is the world leader in the design, manufacture and marketing of the most dependable high-pressure positive displacement reciprocating triplex pumps and systems in the market. Our mission to exceed customer expectations for quality, reliability, availability, delivery, technical expertise and aftermarket support to assure the best value in all the industries served.

LOCATIONS

Worldwide Headquarters

Cat Pumps

1681 94th Lane Northeast
Minneapolis, MN 55449
USA

P: 763-780-5440
F: 763-780-2958
techsupport@catpumps.com
www.catpumps.com

Territories Served

U.S., Canada

International Division

P: 763-780-5440
F: 763-785-4329
intlsales@catpumps.com
www.catpumps.com

Territories Served

Africa, Asia, Australia, Central and
South America, Mexico, Middle East,
New Zealand, Turkey

Cat Pumps International N.V.

Heiveldekens 6A
2550 Kontich
Belgium

P: 32 3 450 71 50
F: 32 3 450 71 51
cpi@catpumps.be
www.catpumps.be

Territories Served

Western Europe (except U.K.,
Germany, and Austria)

Cat Pump (U.K.) Ltd.

1 Fleet Business Park, Sandy Lane
Church Crookham
FLEET, Hampshire GU52 8BF
England

P: +44 1252 622031
F: +44 1252 626655
sales@catpumps.co.uk
technical@catpumps.co.uk
www.catpumps.co.uk

Territories Served

England, Ireland, Scotland,
N. Ireland, Wales

Cat Pumps Deutschland GmbH

Buchwiese 2, D-65510
Idstein
Germany

P: +49 6126 9303 0
F: +49 6126 9303 33
catpumps@t-online.de
www.catpumps.de

Territories Served

Austria, Commonwealth of Independent States
(CIS), Germany and Eastern Europe

SALES, DISTRIBUTION, SERVICE

Call today for product and application assistance.
763-780-5440 or visit us at www.catpumps.com



CAT PUMPS

1681 - 94TH LANE N.E. MINNEAPOLIS, MN 55449-4324
PHONE (763) 780-5440 — FAX (763) 780-2958
e-mail: techsupport@catpumps.com
www.catpumps.com

For International inquiries go to www.catpumps.com and navigate to the "Contact Us" link.