

MODEL 1951K

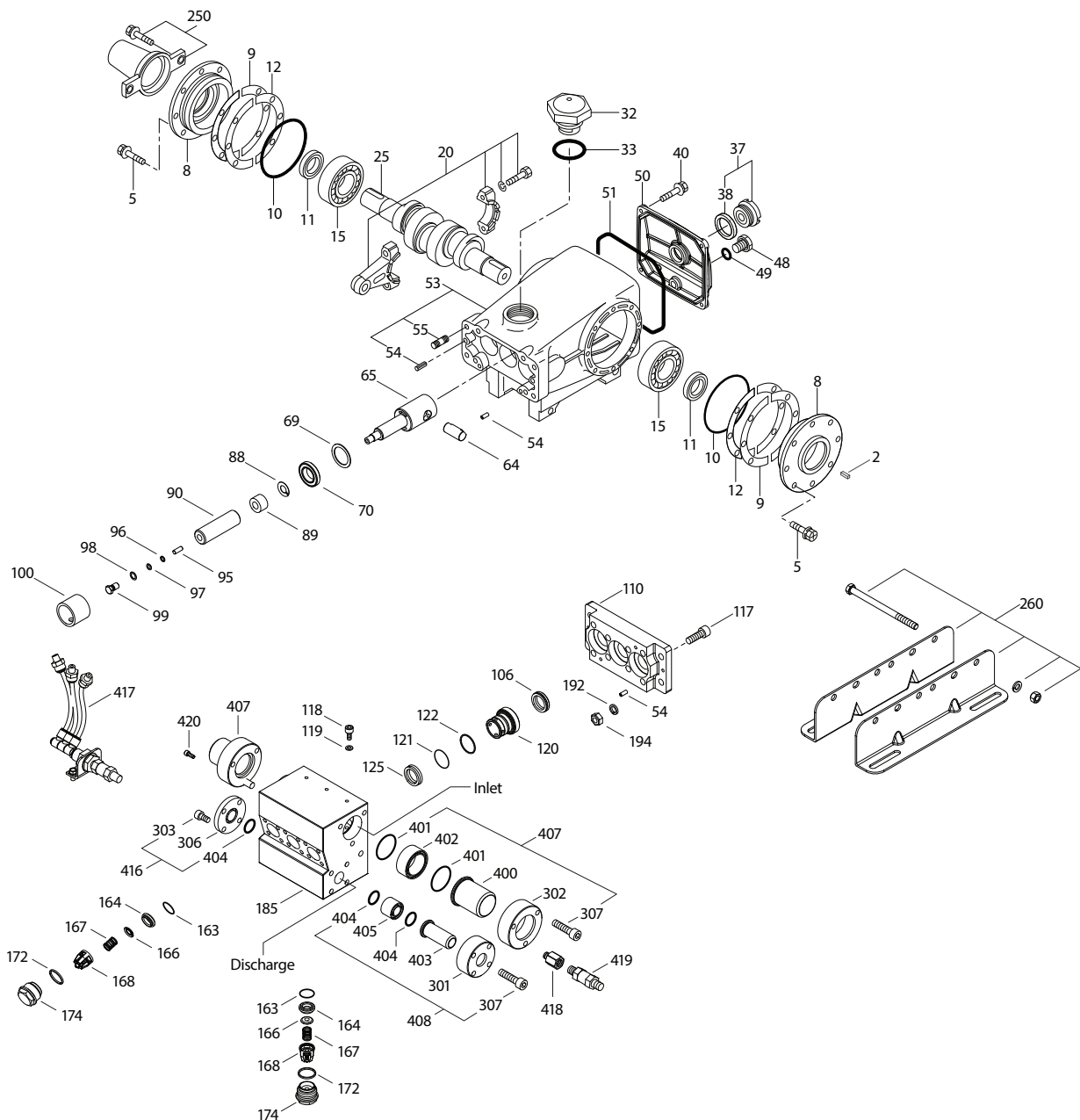


SPECIFICATIONS	U.S. Measure	Metric Measure
Flow	5.0 gpm	19 lpm
Pressure Range	400 – 1450 psi	28 – 100 bar
Maximum RPM	480	480
Inlet Pressure Range*	300 – 800 psi	21 – 55 bar
Minimum Liquid Temp.	-20° F	-29° C
Bore	0.945"	24 mm

SPECIFICATIONS	U.S. Measure	Metric Measure
Stroke	1.181"	30 mm
Crankcase Capacity	42 oz.	1.26 l
Shaft Diameter	1.181"	30 mm
Weight	71 lbs.	32 kg
Dimensions	16.37 x 12.99 x 6.69"	416 x 330 x 170 mm

* Temperature and pressure must be maintained to keep incoming CO₂ in a liquid state.

EXPLODED VIEW



PARTS LIST

ITEM	PN	MATL	DESCRIPTION	QTY	ITEM	PN	MATL	DESCRIPTION	QTY
2	30067	STL	Key (M7 x 7 x 40)	1	120	702459	SS	Case, Low Pressure Seal	3
5	49651	S	Screw, Sems (M8 x 20) (See Tech Bulletin 074, 128)	8	121	33333	NBR	O-Ring, Spacer – 90D	3
8	134805	ALE	Case, Bearing (See Tech Bulletin 118, 128)	2	122	44614	PTFE	Back-up Ring, Spacer	3
9	855043	FBR	Shim, Split, 2-Piece (See Tech Bulletin 128)	0-6	125	702680	SFTB	Seal, HPS with NIH-Spring	3
10	11340	NBR	O-Ring, Bearing Cover – 70D	2	163	702450	NBR	O-Ring, Seat – 90D	6
11	43495	NBR	Seal, Oil, Crankshaft	2	164	702460	SS	Seat	6
12	855044	S	Shim, Split 2-Piece (See Tech Bulletin 128)	1-2	166	43721	S	Valve	6
15	39060	STL	Bearing, Roller	2	167	43751	S	Spring	6
20	768600	TNM	Rod, Connecting Assembly (See Tech Bulletin 074)	3	168	44564	PVDF	Retainer, Spring	6
25	43494	FCM	Crankshaft, Dual-End, (M30)	1	172	702660	PTFE	Washer, Seal	6
32	43211	ABS	Cap, Oil Filler	1	174	702458	SS	Plug, Valve	6
33	14177	NBR	O-Ring, Filler Cap – 70D	1	185	703506	SS	Manifold, Inlet / Discharge	1
37	92241	PC	Gauge, Oil, Bubble with Gasket – 80D (See Tech Bulletin 074)	1	192	15847	S	Lockwasher (M10)	4
38	44428	NBR	Gasket, Flat, Oil Gauge – 80D	1	194	81258	S	Nut, Hex (M10)	4
40	92542	S	Screw, Sems (M6 x 20) (See Tech Bulletin 074)	4	250	855047	NY	Protector, Shaft with 2 Screws (See Tech Bulletin 128)	1
48	25625	STCP	Plug, Drain (1/4" x 19BSP)	1	260	30613	STZP	Mount, Rail, Assembly	1
49	23170	NBR	O-Ring, Drain Plug – 70D	1	299	704181	SS	Head, Complete	1
50	133576	ALE	Cover, Rear (See Tech Bulletin 118, 128)	1	300	702362	NBR	Kit, Seal (Includes: 96, 97, 106, 121, 122, 125, 401, 404)	1
51	44834	NBR	O-Ring, Rear Cover – 70D	1	301	702483	SS	Ring, Flange (Discharge)	1-2
53	134848	ALE	Crankcase (See Tech Bulletin 118, 128)	1	302	702479	SS	Ring, Flange (Inlet)	1-2
54	27488	S	Pin, Guide	4	303	701240	S	Screw, HSH (M8 x 16)	0-7
55	44005	S	Stud, Manifold (M10 x 45) (See Tech Bulletin 074, 128)	4	305	702481	SS	Plate, Blank (Inlet Port)	0-1
64	763507	CM	Pin, Crosshead	3	306	702485	SS	Plate, Blank (Discharge Port)	0-1
65	768892	SZZ	Rod, Plunger	3	307	703032	SS	Screw, HSH (M8 x 40)	7-14
69	126592	STCP R	Washer, Oil Seal	3	310	702360	NBR	Kit, Valve (Includes: 163, 164, 166, 167, 168, 172)	2
70	43500	NBR	Seal, Oil, Crankcase	3	400	702480	SS	Pipe, Inlet (Weld Prep)	2
88	45675	S	Washer, Keyhole	3	401	702663	NBR	O-Ring, Inlet Flange – 90D	3-4
89	45879	SS	Spacer, Plunger	3	402	702478	SS	Spacer, Face Seal (Inlet Flange)	2
90	43552	CC	Plunger, Ceramic (M24 x 77)	3	403	702484	SS	Pipe, Discharge (Weld Prep)	1-2
95	89651	ss	Stud, Retainer (M6 x 16)	3	404	702664	NBR	O-Ring, Discharge Flange – 90D	3-4
96	43235	PTFE	Back-up Ring, Plunger Retainer	3	405	702482	SS	Spacer, Face Seal (Discharge Flange)	1-2
97	17399	NBR	O-Ring, Plunger Retainer – 80D	3	407	702661	SS	Assembly, Inlet Flange (Includes: 302, 307, 400, 401, 402)	1-2
98	44041	SS	Gasket, Plunger Retainer	3	408	702662	SS	Assembly, Discharge Flange (Includes: 301, 307, 403, 404, 405)	1-2
99	44031	SS	Retainer, Plunger (M6) (See Tech Bulletin 074)	3	415	702671	SS	Assembly, Inlet Port Blank (Includes: 303, 305, 401)	1
100	76807	AL	Retainer, Seal (Anti-icing)	3	416	702672	SS	Assembly, Discharge Port Blank (Includes: 303, 306, 404)	1
106	703335	SFTB	Seal, LPS with NIH-Spring	3	417	704484	—	Assembly, Seal Retainer Venting	1
110	702457	SS	Plate, Seal Support	1	418	999105	SS	Adapt, [1/4" NPT(F) x 1/8" NPT(M)]	1
117	87951	S	Screw, HSH (M10 x 30) (See Tech Bulletin 074)	8	419	33937	SS	Valve, Check	1
118	704460	SS	Screw, HSH (M6 x 10)	3	420	703055	SS	Plug 1/8"	1
119	702880	STL/NBR	Seal Washer	3					

Italics are optional items. R Components comply with RoHS Directive.

For additional technical information see www.catpumps.com/literature/tech-bulletins.

MATERIAL CODES (Not Part of Part Number): ABS=ABS Plastic AL=Aluminum ALE=Aluminum Epoxy CC=Ceramic CM=ChromeMoly FBR=Fiber FCM=Forged Chrome-Moly
 NBR=Medium Nitrile (Buna-N) N=Nylon PC=Poly Carbonate PTFE=Pure Polytetrafluoroethylene PVDF=Polyvinylidene Fluoride S=304SS SS=316SS
 SFTB=Special Blend Black SZZ=304SS/Zamak STCP=Steel/Chrome Plated STL=Steel STZP=Steel/Zinc Plated TNM=Special High Strength

⚠ CAUTIONS AND WARNINGS

All High-Pressure Systems require a primary pressure regulating device (i.e. regulator, unloader) and a secondary pressure relief device (i.e. pop-off valve, relief valve). Failure to install such relief devices could result in personal injury or damage to pump or property. Cat Pumps does not assume any liability or responsibility for the operation of a customer's high-pressure system.

Read all CAUTIONS and WARNINGS before commencing service or operation of any high-pressure system. The CAUTIONS and WARNINGS are included in each Service Manual and with each Accessory Data sheet. CAUTIONS and WARNINGS can also be viewed online at www.catpumps.com/dynamic-literature/cautions-and-warnings or can be requested directly from Cat Pumps.

WARRANTY

View the Limited Warranty on-line at www.catpumps.com/literature/cat-pumps-limited-warranty