

MODEL 1540ECM.CO₂



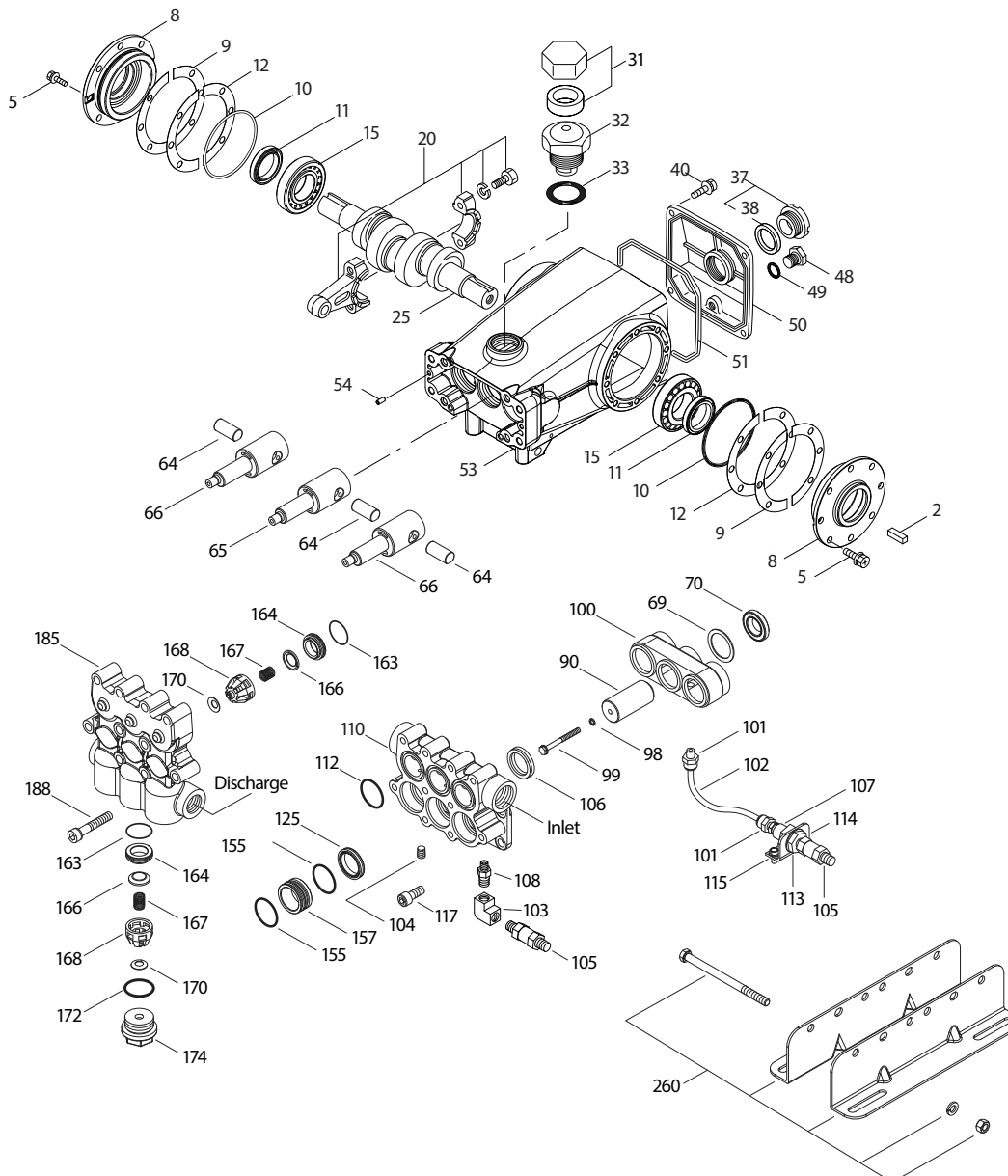
SPECIFICATIONS	U.S. Measure	Metric Measure
Flow	7.0 gpm	26 lpm
Pressure Range	400 – 1200 psi	27.5 – 83 bar
Pump RPM*	450	450
Inlet Pressure Range**	300 – 400 psi	21 – 27.5 bar
Min. Liquid Temperature**	-20° F	-29° C
Bore	1.181"	30 mm
Stroke	1.181"	30 mm
Crankcase Capacity	42 oz.	1.26 l

SPECIFICATIONS	U.S. Measure	Metric Measure
Inlet Ports (2)	1" NPT(F)	1" NPT(F)
Flush Ports (2)	1/8" NPT(F)	1/8" NPT(F)
Discharge Ports (2)	3/4" NPT(F)	3/4" NPT(F)
Shaft Diameter	1.181"	30 mm
Pulley Mounting	Either Side	Either Side
Weight	42.6 lbs.	21 kg
Dimensions	14.57 x 13.0 x 7.2"	370 x 330 x 183 mm

*Pump minimum is 100 RPM.

**Temperature and pressure must be maintained to keep incoming CO₂ in a liquid state.

EXPLODED VIEW



(Parts List on Reverse Side)

October 2020

PARTS LIST

ITEM	PN	MATL	DESCRIPTION	QTY	ITEM	PN	MATL	DESCRIPTION	QTY
2	990036	STL	Key (M8 x 7 x 40) (Use With 990012 "B" Hub)	1	101	999490	D	Adapter, 1/4"	2
	30067	STL	Key (M8 x 7.5 x 25) (Use With 30059 "H" Hub)	1	102	999492	NY	Tubing, 1/4"	1
5	49651	S	Screw, HHC Sems (M8 x 20) (See Tech Bulletin 074, 128)	8	103	999747	BB	Elbow [1/4" NPT(F)]	1
8	134805	ALE	Covering, Bearing (See Tech Bulletin 118, 128)	2	104	34507	BB	Plug, [1/8" NPT(M)]	1
9	855043	FBR	Shim, Split 2-Piece (See Tech Bulletin 128)	2	105	33937	SS	Valve, Check [1/4" NPT(M)]	2
10	11340	NBR	O-Ring, Bearing Cover – 70D	2	106	702939	ST4	Seal, LPS, with NIH – Spring	3
11	43495	NBR	Seal, Oil, Crankshaft	2	107	34633	BB	Bushing [1/4" NPT(F) x 1/8" NPT(M)]	1
12	855044	S	Shim, Split 2-Piece (See Tech Bulletin 128)	2	108	34227	BB	Nipple, [1/4" NPT(M) x 1/8" NPT(M)]	1
15	39060	STL	Bearing, Roller	2	110	49853	FBB	Manifold, Inlet, Flushed	1
20	768600	TNM	Assembly, Connecting Rod (See Tech Bulletin 074)	3	112	123903	NBR	O-Ring, Inlet Manifold – 90D	3
25	43494	FCM	Crankshaft, Dual End (M30)	1	113	34338	BB	Union [1/4" NPT(M)]	1
31	828710	PE	Protector, Oil Cap with Polyurethane Gasket	1	114	34347	STZP	Bracket	1
32	43211	ABS	Cap, Oil Filler	1	115	990776	STZP R	Screw, HHC (1/4" – 20 x 1/2")	2
33	14177	NBR	O-Ring, Oil Filler Cap – 70D	1	117	49044	S	Screw, HSH (M10 x 25) (See Tech Bulletin 074)	4
37	92241	PC	Gauge, Oil, Bubble with Gasket – 80D (See Tech Bulletin 074)	1	125	49619	STG	Seal, Assembly 2-Piece with SS – Support	3
38	44428	NBR	Gasket, Flat, Oil Gauge – 80D	1	155	123903	NBR	O-Ring, HPS Spacer	6
40	92542	S	Screw, HHC Sems (M6 x 20) (See Tech Bulletin 074)	4	157	48946	BB	Spacer, HPS	3
48	25625	STCP	Plug, Drain (1/4" x 19 BSP)	1	163	26143	NBR	O-Ring, Seat – 80D	6
49	23170	NBR	O-Ring, Drain Plug – 70D	1	164	48951	S	Seat	6
50	133576	ALE	Cover, Rear (See Tech Bulletin 118)	1	166	48686	SS	Valve	6
51	44834	NBR	O-Ring, Rear Cover – 70D	1	167	48687	SS	Spring	6
53	134858	ALE	Crankcase (With Guide Pins) (See Tech Bulletin 118, 128)	1	168	48994	PVDF	Retainer, Spring	6
54	27488	S	Pin, Guide	2	170	123764	S	Washer, Spring Retainer	6
64	763507	CM	Pin, Crosshead	3	172	17629	NBR	O-Ring, Valve Plug – 80D	3
65	768933	SHS	Rod, Plunger (center)	1	174	48952	FBB	Plug, Valve (See Tech Bulletin 074)	3
66	768931	SHS	Rod, Plunger (outside)	2	185	48948	FBB	Manifold, Discharge	1
69	126596	STCP R	Washer, Oil Seal	3	188	87952	S	Screw, HSH (M10 x 55) (See Tech Bulletin 074)	10
70	43500	NBR	Seal, Oil, Crankcase	3	250	855046	NY	Protector, Shaft (See Tech Bulletin 128)	1
90	48938	CC	Plunger (M30 x 65)	3	260	30613	STZP R	Mount, Rail Assembly	1
98	46730	NBR	Washer, Seal – 90D	3	300	761770	NBR*	Kit, Seal (Includes: 98, 106, 112, 125, 155)	1
99	48201	SS	Retainer, Plunger (See Tech Bulletin 074)	3	310	31775	NBR	Kit, Valve Preassembled (Includes: 163, 164, 166, 167, 168, 170, 172)	2
100	76836	AL	Retainer, Vented	1	—	6107	—	Oil, Bottle (21 oz.) ISO-68 Hydraulic (Fill to specified crankcase capacity prior to start-up)	2

Italics are optional items. [] Date of latest production change.

R Components comply with RoHS Directive. * Review material codes for individual items (STG generally may be used as alternate).

For additional technical information see www.catpumps.com/literature/tech-bulletins.

MATERIAL CODES (Not Part of Part Number): ABS=ABS Plastic AL=Aluminum ALE=Aluminum Epoxy BB=Brass CC=Ceramic CM=Chrome-moly D=Acetal FBB=Forged Brass FBR=Fiber
FCM=Forged Chrome-moly NBR=Medium Nitrile (Buna-N) NY=Nylon PC=Poly Carbonate PE=Polyethylene PLM=Unspecified Poly PTFE=Pure Polytetrafluoroethylene
PVDF=Polyvinylidene Fluoride S=304SS SHS=304SS/High Strength SS=316SS STCP=Steel/Chrome Plated ST4=Special PTFE 4 STG=Special Blend PTFE White
STL=Steel STZP=Steel/Zinc Plated TNM=Special High Strength

⚠ CAUTIONS AND WARNINGS

All high-pressure systems require a primary pressure regulating device (i.e. regulator, unloader) and a secondary pressure relief device (i.e. pop-off valve, relief valve). Failure to install such relief devices could result in personal injury or damage to pump or property. Cat Pumps does not assume any liability or responsibility for the operation of a customer's high-pressure system.

Read all CAUTIONS and WARNINGS before commencing service or operation of any high-pressure system. The CAUTIONS and WARNINGS are included in each Service Manual and with each Accessory Data sheet. CAUTIONS and WARNINGS can also be viewed online at www.catpumps.com/dynamic-literature/cautions-and-warnings or can be requested directly from Cat Pumps.

WARRANTY

View the Limited Warranty on-line at www.catpumps.com/literature/cat-pumps-limited-warranty