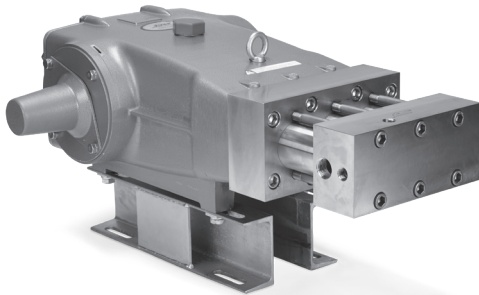


DATA SHEET

68 FRAME BLOCK-STYLE PLUNGER PUMP



Stainless Steel **6810**
Model:



FEATURES

- Triplex plunger design offers high efficiency and low pulsation.
- Durable V-Packings are lubricated and cooled by pumped liquid.
- Pre set low-pressure seals provide secondary protection against external leaks and requires no packing adjustments.
- Low upswept volume maximizes volumetric efficiency.
- Special high-density, polished, concentric ceramic plungers provide a true wear surface and extended seal life.
- Wet-end is easily serviced without entering crankcase.
- Pump comes standard with NBR seals. Alternative seal materials are available for higher temperature or chemical compatibility.

SPECIFICATIONS	U.S. Measure	Metric Measure
Flow	10 gpm	38 lpm
Pressure Range	100–10,000 psi	6.9–689 bar
Pump RPM*	600 rpm	600 rpm
Inlet Pressure Range	Flooded to 50 psi	Flooded to 3.4 bar
Max. Liquid Temperature	140° F	60° C
Above 130°F call Cat Pumps for inlet conditions and elastomer recommendations.		
Bore	0.827"	21 mm
Stroke	2.579"	65.5 mm
Crankcase Capacity	10 qts	9.46 l
Inlet Ports (2)	1" NPT(F)	1" NPT(F)
Discharge Ports (3)	½" NPT(F)	½" NPT(F)
Pulley Mounting	Either Side	Either Side
Shaft Diameter	1.772"	45 mm
Weight	377.4 lbs	171.5 kg
Dimensions	31.89 x 24.02 x 11.12"	810 x 610 x 282 mm

*Pump minimum is 100 RPM.

$$\frac{\text{Rated gpm}}{\text{Rated rpm}} = \frac{\text{Desired gpm}}{\text{Desired rpm}}$$

$$\frac{\text{hp}}{\text{(Electric Brake)}} = \frac{\text{gpm} \times \text{psi}}{1460}$$

$$\frac{\text{Motor Pulley OD}}{\text{Pump rpm}} = \frac{\text{Pump Pulley OD}}{\text{Motor rpm}}$$

Refer to pump **Service Manual** for repair procedure and additional technical information.

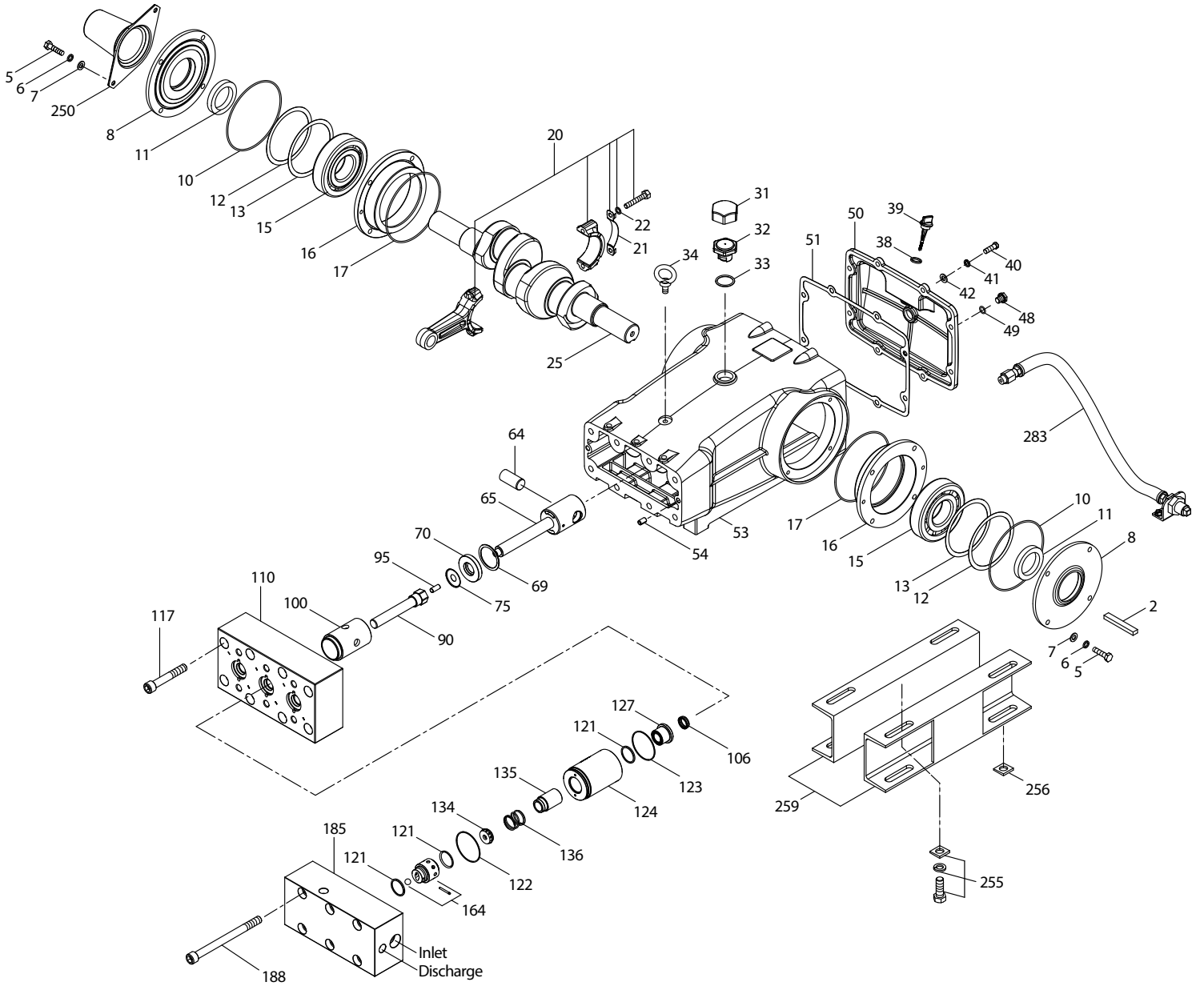
PARTS LIST

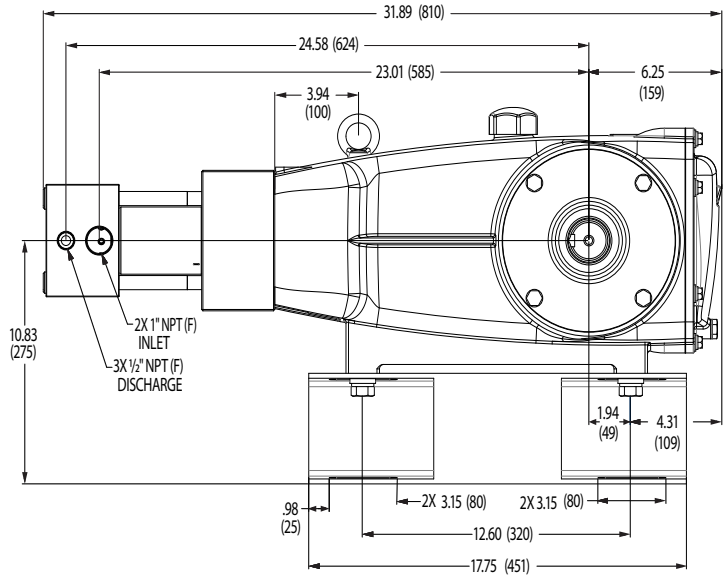
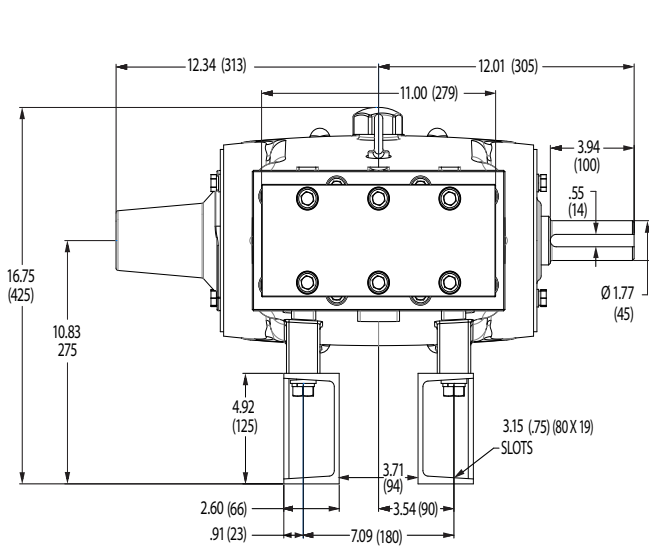
ITEM	PART NUMBER	MATL	DESCRIPTION	QTY
2	43048	STL	Key (M14 x 9 x 90)	1
5	89728	S	Screw, HH (M10 x 40) (See Tech Bulletin 074)	8
6	15847	S	Lockwasher (M10)	8
7	19934	S	Washer, Flat (M10)	8
8	29443	ALE	Cover, Bearing, Outer (See Tech Bulletin 118)	2
10	29444	NBR	O-Ring, Bearing Cover-70D	2
11	11443	NBR	Seal, Oil, Crankshaft	2
12	126594	STCP R	Washer, Shim (M120 x 0.3)	0-2
13	126595	STCP R	Washer, Shim (M120 x 0.5)	0-2
15	29441	STL	Bearing, Roller	2
16	29442	STL	Cover, Bearing, Inner	2
17	29444	NBR	O-Ring, Bearing Cover-70D	2
20	126612	BBHS	Assembly, Connecting Rod (Includes: 21, 22) (See Tech Bulletin 074)	3
21	126560	STCP R	Washer, Locking	3
22	126593	STCP R	Washer, Shim (M10.5 x 1.5)	6
25	29440	FCM	Crankshaft, Dual Shaft	1
31	828710	PE	Protector, Oil Cap with Foam Gasket	1
32	43211	ABS	Cap, Oil Filler	1
33	14177	NBR	O-Ring, Filler Cap-70D	1
34	126743	STCP R	Bolt, Eye (M12) (For Lifting Pump Only)	1
38	129343	RBR	Gasket, Flat Flex	1
39	27769	ABS	Stick, Dip, Blue	1
40	89627	S	Screw, HH (M10 x 30) (See Tech Bulletin 074)	8
41	15847	S	Lockwasher (M10)	8
42	19934	S	Washer, Flat (M10)	8
48	25625	STCP	Plug, Drain (1/4" x 19 BSP)	1
49	23170	NBR	O-Ring, Drain Plug-70D	1
50	29438	ALE	Cover, Rear (See Tech Bulletin 118)	1
51	129386	NBR	Gasket, Rear Cover	1
53	45303	ALE	Crankcase (Includes: 34, 54) (See Tech Bulletin 118)	1
54	43282	S	Pin, Guide	2
64	29481	CM	Pin, Crosshead	3
65	48735	SSZZ	Rod, Plunger	3
69	126588	STCP R	Washer, Oil Seal	3
70	29454	NBR	Seal, Oil Crankcase	3
75	43865	S	Slinger, Barrier	3
90	76347	CC	Assembly, Plunger (M21)	3
95	76344	S	Stud (M10 x 22)	3
100	76585	D	Retainer, Seal	3
106	76313	ST4	Seal, LPS	3
110	76348	SFSS	Block, Housing	1
117	76358	S	Screw, HSH (M16 x 100) (See Tech Bulletin 074)	8
121	76318	PTFE	Ring, Cylinder Sealing	9
122	76327	NBR	O-Ring, Front Cylinder	3
123	76317	NBR	O-Ring, Rear Cylinder	3
124	76321	SFSS	Cylinder	3
127	76314	UHMW	Assembly, V-Packing with Bronze Cylinder Support	3
134	76359	S455	Valve, Inlet	3
135	76322	D	Retainer, Spring	3
136	76324	S	Spring	3
164	76337	SFSS	Seat, Ball Assembly with Ceramic Ball	3
185	76388	SFSS	Manifold, Inlet/Discharge, Block Style	1
188	76377	S	Screw, HSH (M16 x 200) (See Tech Bulletin 074)	6
250	29445	ALE	Protector, Shaft (See Tech Bulletin 118)	1
255	33243	STZP	Kit, Mount (Included with Pump) (See Tech Bulletin 074)	1
256	29649	STCP	Washer, Slant (M16) Use for Adjustment Between Rail and Mounting Base	4
259	126604	STCP R	Rail, Box (Included with Pump)	2
275	990014	STL	Hub, "B", M45 with Keyway	1
283	34314	—	Kit, Oil Drain (3/8" x 48")	1
290	6124	—	Gasket, Liquid (3 oz)	1
299	996810	SFSS	Head, Complete, Block-Style with NBR O-Rings	1
300	76966	NBR*	Kit, Seal (Includes: 106, 121, 122, 123, 127)	1
310	76967	S	Kit, Valve (Includes: 121, 122, 123, 134, 136, 164)	1
—	819010	F	Assembly, Crankcase, Cast Iron Conversion	1
—	6105	—	Oil, Twin Pack (Two-2.5 Gal) ISO-68 Hydraulic (Fill to Specified Crankcase Capacity Prior to Start-up)	1
—	6139	—	Lubricant, Anti-seize (8 oz) (See Tech Bulletin 095)	1

Italics are optional items. R Components comply with RoHS Directive.

*Review individual parts in each kit for material code identification. For additional technical information see www.catpumps.com/literature/tech-bulletins.
MATERIAL CODES (Not Part of Part Number): ABS=ABS Plastic ALE=Aluminum Epoxy BBHS=Brass/High Strength CC=Ceramic CM=Chrome-Moly D=Acetal F=Cast Iron
FCM=Forged Chrome-Moly NBR=Medium Nitrile (Buna-N) PE=Polyethylene PTFE=Pure Polytetrafluoroethylene RBR=Rubber S=304SS SFSS=17-4SS
SSZZ=316SS/Zamak ST4=Special PTFE 4 STCP=Steel/Chrome Plated STL=Steel STZP=Steel/Zinc Plated S455=455 SS
UHMW=Ultra High Molecular Polyethylene

EXPLODED VIEW





⚠ CAUTIONS AND WARNINGS

All high-pressure systems require a primary pressure regulating device (i.e. regulator, unloader) and a secondary pressure relief device (i.e. pop-off valve, relief valve). Failure to install such relief devices could result in personal injury or damage to pump or property. Cat Pumps does not assume any liability or responsibility for the operation of a customer's high-pressure system. Read all CAUTIONS and WARNINGS before commencing service or operation of any high-pressure system. The CAUTIONS and WARNINGS are included in each Service Manual and with each Accessory Data sheet. CAUTIONS and WARNINGS can also be viewed online at www.catpumps.com/dynamic-literature/cautions-and-warnings or can be requested directly from Cat Pumps.

WARRANTY

View the Limited Warranty online at www.catpumps.com/literature/cat-pumps-limited-warranty