

MODEL 6811KM.CO₂



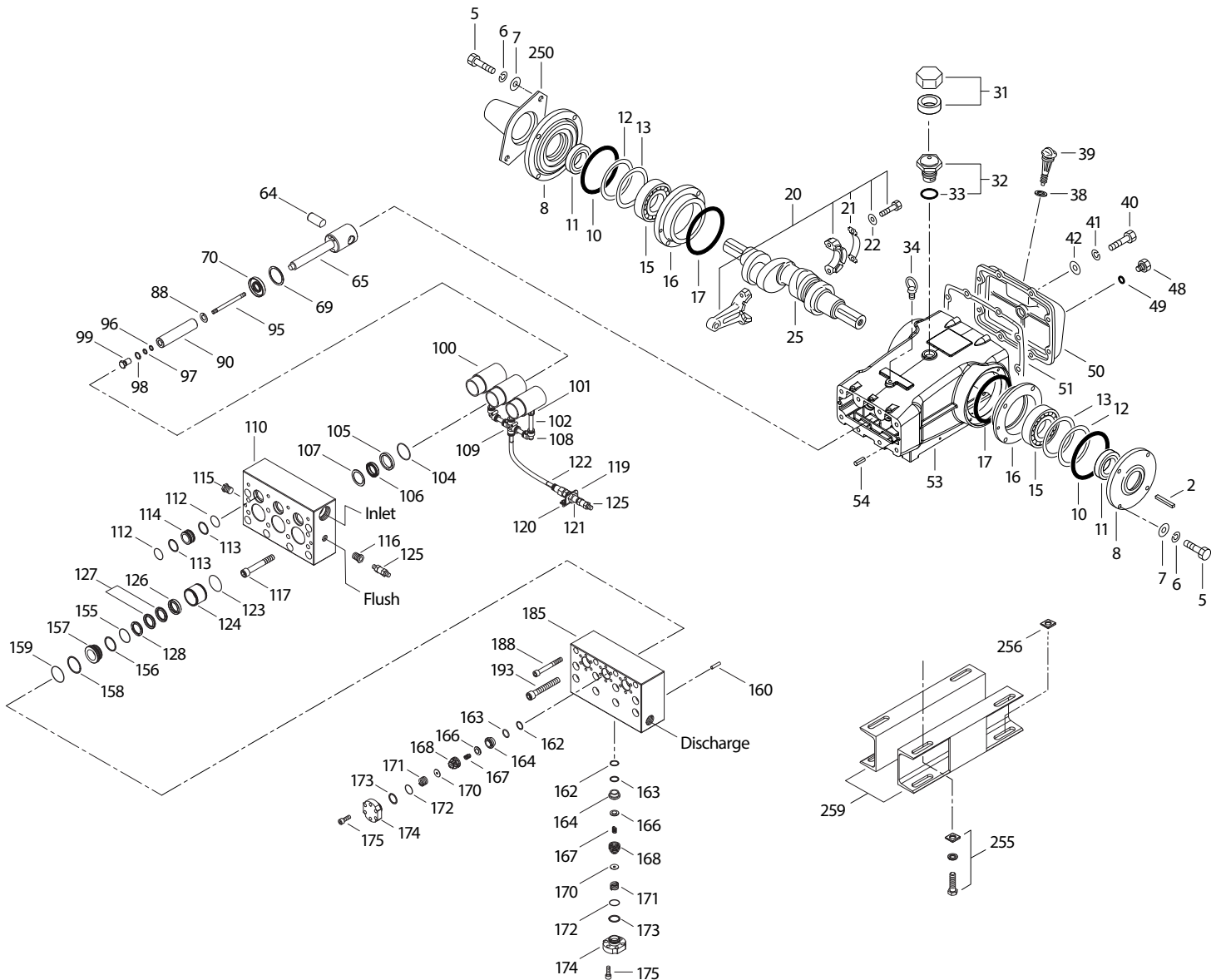
SPECIFICATIONS	U.S. Measure	Metric Measure
Flow	7.2 gpm	27.2 lpm
Pressure Range	400–5000 psi	27.6–345 bar
Pump RPM*	450	450
Inlet Pressure Range**	300–800 psi	21–55 bar
Min. Liquid Temperature	-20° F	-29° C
Bore	0.984"	25 mm
Stroke	2.579"	65.5 mm
Crankcase Capacity	10 qts	9.46 l

SPECIFICATIONS	U.S. Measure	Metric Measure
Inlet Ports (2)	1½" NPT(F)	1½" NPT(F)
Flush Ports (2)	½" NPT(F)	½" NPT(F)
Discharge Ports (2)	1" NPT(F)	1" NPT(F)
Shaft Diameter	1.772"	45 mm
Pulley Mounting	Either Side	Either Side
Weight	355 lbs	161 kg
Dimensions	29.68 x 23.98 x 11.97"	754 x 609 x 304 mm

*Pump minimum is 100 RPM.

** Temperature and pressure must be maintained to keep incoming CO₂ in a liquid state.

EXPLODED VIEW



(Parts List on Reverse Side)

April 2022

PARTS LIST

ITEM	PN	MATL	DESCRIPTION	QTY	ITEM	PN	MATL	DESCRIPTION	QTY
2	43048	STL	Key (M14 x 9 x 90)	1	109	703144	D	Cross, Barb (12MM)	1
5	89728	S	Screw, HH (M10 x 40) (See Tech Bulletin 074)	8	110	701322	SS	Manifold Inlet, Block-Style, Flushed	1
6	15847	S	Lockwasher (M10)	8	111	701116	SS	Plug, Inlet Manifold [1½" NPT(M)] (Not shown)	1
7	19934	S	Washer, Flat (M10)	8	112	701632	NBR	O-Ring, Spacer	6
8	29443	ALE	Cover, Bearing, Outer (See Tech Bulletin 118)	2	113	701329	PTFE	Backup Ring, Spacer	6
10	29444	NBR	O-Ring, Bearing Cover-70D	2	114	701327	SS	Spacer, Inlet	3
11	11443	NBR	Seal, Oil, Crankshaft	2	115	45156	SS	Plug, Hex Head [½" NPT(M)]	1
12	126594	STCPR	Washer, Shim (M120 x 0.3)	0-2	116	998032	SS	Bushing [½" NPT(M) x ¼" NPT(M)]	1
13	126595	STCPR	Washer, Shim (M120 x 0.5)	0-2	117	89694	S	Screw, HSH (M16 x 110) (See Tech Bulletin 074)	6
15	29441	STL	Bearing, Roller	2	119	34347	STZP	Bracket	1
16	29442	STL	Cover, Bearing, Inner	2	120	990776	STZP R	Screw, HHC (¼" - 20 x ½")	2
17	29444	NBR	O-Ring, Bearing Cover-70D	2	121	34338	BB	Union [¼" NPT(M)]	1
20	766612	BBHS	Assembly, Connecting Rod (Includes: 21, 22) (See Tech Bulletin 074)	3	122	703147	BBNP	Adapter, Tubing [½" NPT(F) x 12MM]	1
21	126560	STCPR	Washer, Locking	3	123	12391	NBR	O-Ring, V-Packing Cylinder-70D	3
22	126593	STCPR	Washer, Shim (M10.5 x 1.5)	6	124	701324	SS	Cylinder, V-Packing	3
25	29440	FCM	Crankshaft, Dual Shaft (M65.5)	1	125	33937	SS	Valve, Check [¼" NPT(M)]	2
31	828710	PE	Protector, Oil Cap with Foam Gasket	1	126	701325	SS	Adapter, Female	3
32	43211	ABS	Cap, Oil Filler	1	127	44610	STG	V-Packing	6
33	14177	NBR	O-Ring, Filler Cap-70D	1	128	701326	SS	Adapter, Male	3
34	126743	STCPR	Bolt, Eye (M12) (For Lifting Pump Only)	1	155	11379	NBR	O-Ring, V-Packing Spacer, Inner-70D	3
38	129343	RBR	Gasket, Flat Flex	1	156	28243	PTFE	Backup Ring, Spacer, Inner	3
39	27769	ABS	Stick, Dip	1	157	701294	SS	Spacer, V-Packing	3
40	89627	S	Screw, HH (M10 x 30) (See Tech Bulletin 074)	8	158	28243	PTFE	Backup Ring, Spacer, Outer	3
41	15847	S	Lockwasher (M10)	8	159	11379	NBR	O-Ring, V-Packing Spacer, Outer-70D	3
42	19934	S	Washer, Flat (M10)	8	160	44756	S	Pin, Guide	2
48	25625	STCP	Plug, Drain (¼" x 19 BSP)	1	162	21985	PTFE	Backup Ring, Seat	6
49	23170	NBR	O-Ring, Drain Plug-70D	1	163	26089	NBR	O-Ring, Seat-80D	6
50	29438	ALE	Cover, Rear (See Tech Bulletin 118)	1	164	44080	SS	Seat	6
51	129386	NBR	Gasket, Rear Cover	1	166	44081	SS	Valve	6
53	133667	ALE	Crankcase (Includes: 34, 54) (See Tech Bulletin 118)	1	167	44082	SS	Spring	6
54	43282	S	Pin, Guide	2	168	44735	PVDF	Retainer, Spring	6
64	769481	CM	Pin, Crosshead	3	170	44794	SS	Washer, Retainer	6
65	768735	SSZZ	Rod, Plunger	3	171	44793	SS	Spring, Coil	6
69	126588	STCPR	Washer, Oil Seal	3	172	15853	NBR	O-Ring, Valve Plug-70D	6
70	29454	NBR	Seal, Oil Crankcase	3	173	20224	PTFE	Backup Ring, Valve Plug	6
88	45676	S	Washer, Keyhole (M16)	3	174	701260	SS	Plug, Valve	6
90	43866	CC	Plunger (M25 x 145)	3	175	87951	S	Screw, HSH (M10 x 30) (See Tech Bulletin 074)	36
95	89778	SS	Stud, Plunger Retainer (M10 x 135)	3	185	701320	SS	Manifold, Discharge, Block-Style	1
96	20189	PTFE	Backup Ring, Plunger Retainer	3	188	701279	S	Screw, HSH (M12 x 100), Lower	4
97	11345	NBR	O-Ring, Plunger Retainer - 70D	3	193	89694	S	Screw, HSH (M16 x 110), Upper	8
98	44085	SS	Gasket, Plunger Retainer	3	250	29445	ALE	Protector, Shaft (See Tech Bulletin 118)	1
99	44084	SS	Retainer, Plunger (M10) (See Tech Bulletin 074)	3	255	33243	STZP	Direct, Mount (Included with Pump)	1
100	703222	D	Retainer, Seal	3	256	29649	STCP	Washer, Slant (M16) (To Shim and Align Mounting Bolt [Not Included] Through the Box Rail and Mounting Base)	4
101	703146	BBNP	Adapter, Tubing (¾" NPT(M) x 12MM)	3	259	126604	STCPR	Rail, Box (Included with Pump)	2
102	703142	NY	Tubing (12MM)	6	290	6124	—	Gasket, Liquid (3 oz)	1
103	998550	NY	Nipple [½" NPT(M) x ¼" NPT(M)]	1	300	76289	NBR*	Kit, Seal (Includes: 97, 104, 106, 112, 113, 123, 127, 155, 156, 158, 159)	1
104	43875	NBR	O-Ring, Adapter, Inlet-70D	3	310	34151	NBR	Kit, Valve (Includes: 162-164, 166-168, 170-173)	2
105	701323	SS	Adapter, Inlet, Low-Pressure	3	—	6102	—	Oil, (Jug 2.5 gal) ISO-68 Hydraulic (Fill to Specified Crankcase Capacity Prior to Start-up)	1
106	701944	SFTA	Seal, Low-Pressure, with SS-Spring	3	—	6139	—	Lubricant, Antiseize (8 oz) (See Tech Bulletin 095)	1
107	44089	SS	Washer, Low-Pressure	3					
108	703145	D	Elbow (12MM)	2					

**Review individual parts in each kit for material code identification. Italics are optional items.*

R Components comply with RoHS Directive. For additional technical information see www.catpumps.com/literature/tech-bulletins.

MATERIAL CODES (Not Part of Part Number): ABS=ABS Plastic ALE=Aluminum Epoxy BB=Brass BBHS=Brass/High Strength BBNP=Brass/Nickel Plated CC=Ceramic CM=Chrome-Moly D=Acetal FCM=Forged Chrome-Moly NBR=Medium Nitrile (Buna-N) NY=Nylon PE=Polyethylene PTFE=Pure Polytetrafluoroethylene PVDF=Polyvinylidene Fluoride RBR=Rubber S=304SS SS=316SS STG=Special Blend PTFE White SFTA=Special Blend PTFE Tan SSZZ=316SS/Zamak STCPR=Steel/Chrome Plated STL=Steel STZP=Steel/Zinc Plated

⚠ CAUTIONS AND WARNINGS

All high-pressure systems require a primary pressure regulating device (i.e. regulator, unloader) and a secondary pressure relief device (i.e. pop-off valve, relief valve). Failure to install such relief devices could result in personal injury or damage to pump or property. Cat Pumps does not assume any liability or responsibility for the operation of a customer's high-pressure system.

Read all CAUTIONS and WARNINGS before commencing service or operation of any high-pressure system. The CAUTIONS and WARNINGS are included in each Service Manual and with each Accessory Data sheet. CAUTIONS and WARNINGS can also be viewed online at www.catpumps.com/dynamic-literature/cautions-and-warnings or can be requested directly from Cat Pumps.

WARRANTY

View the Limited Warranty online at www.catpumps.com/literature/cat-pumps-limited-warranty