

MODEL 6841KM.CO₂



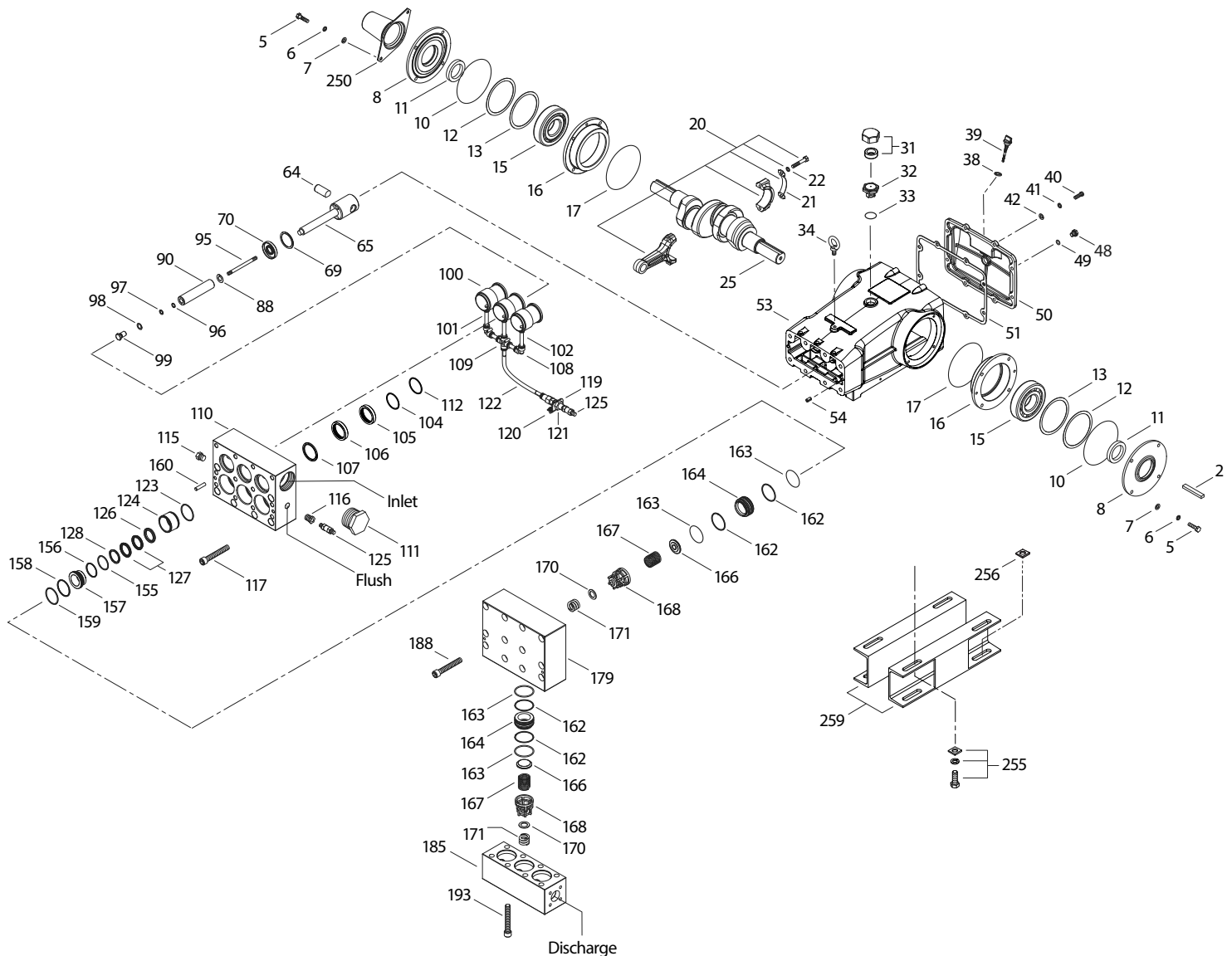
| SPECIFICATIONS | U.S. Measure | Metric Measure |
|-------------------------|--------------|----------------|
| Flow | 30.0 gpm | 113.6 lpm |
| Pressure Range | 400–2000 psi | 27.6–138 bar |
| Pump RPM* | 450 rpm | 450 rpm |
| Inlet Pressure Range** | 300–800 psi | 21–55 bar |
| Min. Liquid Temperature | -20° F | -29° C |
| Bore | 1.772" | 45mm |
| Stroke | 2.579" | 65.5mm |
| Crankcase Capacity | 10 qts | 9.5 l |

| SPECIFICATIONS | U.S. Measure | Metric Measure |
|---------------------|------------------------|-------------------|
| Inlet Ports (2) | 2½" NPT(F) | 2½" NPT(F) |
| Flush Ports (2) | ½" NPT(F) | ½" NPT(F) |
| Discharge Ports (2) | 1¼" NPT(F) | 1¼" NPT(F) |
| Shaft Diameter | 1.772" | 45mm |
| Pulley Mounting | Either Side | Either Side |
| Weight | 355 lbs | 161 kg |
| Dimensions | 28.95 x 24.37 x 13.15" | 735 x 619 x 334mm |

* Pump minimum is 100 RPM.

** Temperature and pressure must be maintained to keep incoming CO₂ in a liquid state.

EXPLODED VIEW



(Parts List on Reverse Side)

April 2022

PARTS LIST

| ITEM PN | MATL | DESCRIPTION | QTY |
|---------|--------|--|-----|
| 2 | 43048 | STL Key (M14 x 9 x 90) | 1 |
| 5 | 89728 | S Screw, HH (M10 x 40) (See Tech Bulletin 074) | 8 |
| 6 | 15847 | S Lockwasher (M10) | 8 |
| 7 | 19934 | S Washer, Flat (M10) | 8 |
| 8 | 29443 | ALE Cover, Bearing, Outer (See Tech Bulletin 118) | 2 |
| 10 | 29444 | NBR O-Ring, Bearing Cover-70D | 2 |
| 11 | 11443 | NBR Seal, Oil, Crankshaft | 2 |
| 12 | 126594 | STCP R Washer, Shim (M120 x 0.3) | 0-2 |
| 13 | 126595 | STCP R Washer, Shim (M120 x 0.5) | 0-2 |
| 15 | 29441 | STL Bearing, Roller | 2 |
| 16 | 29442 | STL Cover, Bearing, Inner | 2 |
| 17 | 29444 | NBR O-Ring, Bearing Cover-70D | 2 |
| 20 | 766612 | BBHS Assembly, Connecting Rod (Includes: 21, 22) (See Tech Bulletin 074) | 3 |
| 21 | 126560 | STCP R Washer, Locking | 3 |
| 22 | 126593 | STCP R Washer, Shim (M10.5 x 1.5) | 6 |
| 25 | 29440 | FCM Crankshaft, Dual Shaft (M65.5) | 1 |
| 31 | 828710 | PE Protector, Oil Cap with Foam Gasket | 1 |
| 32 | 43211 | ABS Cap, Oil Filler | 1 |
| 33 | 14177 | NBR O-Ring, Filler Cap-70D | 1 |
| 34 | 126743 | STCP R Bolt, Eye (M12) (For Lifting Pump Only) | 1 |
| 38 | 129343 | RBR Gasket, Flat Flex | 1 |
| 39 | 27769 | ABS Stick, Dip | 1 |
| 40 | 89627 | S Screw, HH (M10 x 30) (See Tech Bulletin 074) | 8 |
| 41 | 15847 | S Lockwasher (M10) | 8 |
| 42 | 19934 | S Washer, Flat (M10) | 8 |
| 48 | 25625 | STCP Plug, Drain (1/4" x 19 BSP) | 1 |
| 49 | 23170 | NBR O-Ring, Drain Plug-70D | 1 |
| 50 | 29438 | ALE Cover, Rear (See Tech Bulletin 118) | 1 |
| 51 | 129386 | NBR Gasket, Rear Cover | 1 |
| 53 | 133667 | ALE Crankcase (Includes: 34, 54) (See Tech Bulletin 118) | 1 |
| 54 | 43282 | S Pin, Guide | 2 |
| 64 | 769481 | CM Pin, Crosshead | 3 |
| 65 | 76384 | SSZZ Rod, Plunger | 3 |
| 69 | 126588 | STCP R Washer, Oil Seal | 3 |
| 70 | 29454 | NBR Seal, Oil Crankcase | 3 |
| 88 | 45677 | SS Washer, Keyhole (M16) | 3 |
| 90 | 45672 | CC Plunger (M45 x 185) | 3 |
| 95 | 44748 | SS Stud, Plunger Retainer (M14 x 147) | 3 |
| 96 | 20214 | PTFE Backup Ring, Plunger Retainer | 3 |
| 97 | 17616 | NBR O-Ring, Plunger Retainer-80D | 3 |
| 98 | 44751 | SS Gasket, Plunger Retainer | 3 |
| 99 | 44750 | SS Retainer, Plunger (M14) (See Tech Bulletin 074) | 3 |
| 100 | 31224 | D Retainer, Seal | 3 |
| 101 | 999490 | D Adapter, (1/4" x 1/8" NPT) | 3 |
| 102 | 999492 | NY Tubing, 1/4" OD | 3 |
| 103 | 999491 | PLM Manifold, (3 x 1/4") | 1 |
| 104 | 18178 | NBR O-Ring, Low-Pressure, Adapter-80D | 3 |

| ITEM PN | MATL | DESCRIPTION | QTY |
|---------|--------|--|-----|
| 105 | 701355 | SS Adapter, Low-Pressure | 3 |
| 106 | 703359 | SFTB Seal, Low-Pressure, with SS-Spring | 3 |
| 107 | 701356 | SS Washer, Low-Pressure | 3 |
| 110 | 701343 | SS Manifold, Inlet, Block-Style, Flushed | 1 |
| 111 | 701353 | SS Plug, Inlet Manifold [2 1/2" NPT(M)] | 1 |
| 112 | 12392 | NBR O-Ring, Seal Retainer-70D | 3 |
| 115 | 45156 | SS Plug, Hex Head [1/2" NPT(M)] | 1 |
| 116 | 998032 | SS Bushing [1/2" NPT(M) x 1/4" NPT(M)] | 1 |
| 117 | 89694 | S Screw, HSH (M16 x 110) (See Tech Bulletin 074) | 6 |
| 119 | 34347 | STZP Bracket | 1 |
| 120 | 990776 | STZP R Screw, HHC (1/4" - 20 x 1/2") | 2 |
| 121 | 34338 | BB Union, [1/4" NPT(M)] | 1 |
| 123 | 18178 | NBR O-Ring, V-Packing Cylinder-80D | 3 |
| 124 | 701357 | SS Cylinder, V-Packing | 3 |
| 125 | 33937 | SS Valve, Check [1/4" NPT(M)] | 2 |
| 126 | 701358 | SS Adapter, Female | 3 |
| 127 | 104450 | STG V-Packing | 6 |
| 128 | 701359 | SS Adapter, Male | 3 |
| 155 | 701978 | NBR O-Ring, V-Packing Spacer, Inner | 3 |
| 156 | 701361 | PTFE Backup Ring, V-Packing Spacer, Inner | 3 |
| 157 | 701362 | SS Spacer, V-Packing with Coil Springs | 3 |
| 158 | 701363 | PTFE Back-up Ring, V-Packing Spacer, Outer | 3 |
| 159 | 18178 | NBR O-Ring, V-Packing Spacer, Outer-80D | 3 |
| 160 | 44756 | S Pin, Guide | 2 |
| 162 | 23116 | PTFE Backup Ring, Seat | 12 |
| 163 | 12392 | NBR O-Ring, Seat-70D | 12 |
| 164 | 46173 | SS Seat | 6 |
| 166 | 44774 | SS Valve | 6 |
| 167 | 44773 | SS Spring | 6 |
| 168 | 44775 | PVDF Retainer, Spring | 6 |
| 170 | 44776 | SS Washer, Retainer | 6 |
| 171 | 701354 | SS Spring, Coil Retainer | 6 |
| 179 | 46171 | SS Manifold, Valve, Block-Style | 1 |
| 185 | 46176 | SS Manifold, Discharge, Block-Style | 1 |
| 188 | 89694 | S Screw, HSH (M16 x 110), Lower (See Tech Bulletin 074) | 12 |
| 193 | 89694 | S Screw, HSH (M16 x 110), Upper (See Tech Bulletin 074) | 8 |
| 250 | 29445 | ALE Protector, Shaft (See Tech Bulletin 118) | 1 |
| 255 | 33243 | STZP Direct, Mount (Included with Pump) | 1 |
| 256 | 29649 | STCP Washer, Slant (M16) (To Shim and Align Mounting Bolt [Not Included] Through the Box Rail and Mounting Base) | 4 |
| 259 | 126604 | STCP R Rail, Box (Included with Pump) | 2 |
| 275 | 990014 | STL Hub, "B", M45 with Keyway (Not Shown) | 1 |
| 283 | 34314 | — Kit, Oil Drain (3/8" x 48") (Not Shown) | 1 |
| 290 | 6124 | — Gasket, Liquid (3 oz) | 1 |
| 300 | 76098 | NBR* Kit, Seal (Includes: 97, 104, 106, 112, 123, 127, 155, 156, 158, 159) | 1 |
| 310 | 34105 | NBR Kit, Valve (Includes: 162-164, 166, 167, 168, 170) | 2 |
| — | 6102 | — Oil, Jug (2.5 gal) ISO-68 Hydraulic (Fill to Specified Crankcase Capacity Prior to Start-up) | 1 |
| — | 6139 | — Lubricant, Anti-seize (8 oz) (See Tech Bulletin 095) | 1 |

*Review individual parts in each kit for material code identification.

Italics are optional items. R Components comply with RoHS Directive. For additional technical information see www.catpumps.com/literature/tech-bulletins.

MATERIAL CODES (Not Part of Part Number): ABS=ABS Plastic ALE=Aluminum Epoxy BB=Brass BBHS=Brass/High Strength BBNP=Brass/Nickel Plated CC=Ceramic

CM=ChromeMoly D=Acetal FCM=Forged Chrome-Moly NBR=Medium Nitrile (Buna-N) NY=Nylon PE=Polyethylene PLM=Unspecified Poly

PTFE=Pure Polytetrafluoroethylene PVDF=Polyvinylidene Fluoride RBR=Rubber S=304SS SS=316SS SFTB=Special Blend Black

SSZZ=316SSZamak STCP=Steel/Chrome Plated STG=Special Blend PTFE White

STL=Steel STZP=Steel/Zinc Plated

⚠ CAUTIONS AND WARNINGS

All high-pressure systems require a primary pressure regulating device (i.e. regulator, unloader) and a secondary pressure relief device (i.e. pop-off valve, relief valve). Failure to install such relief devices could result in personal injury or damage to pump or property. Cat Pumps does not assume any liability or responsibility for the operation of a customer's high-pressure system.

Read all CAUTIONS and WARNINGS before commencing service or operation of any high-pressure system. The CAUTIONS and WARNINGS are included in each Service Manual and with each Accessory Data sheet. CAUTIONS and WARNINGS can also be viewed online at www.catpumps.com/dynamic-literature/cautions-and-warnings or can be requested directly from Cat Pumps.

WARRANTY

View the Limited Warranty online at www.catpumps.com/literature/cat-pumps-limited-warranty