

MODEL 6861KM.CO₂



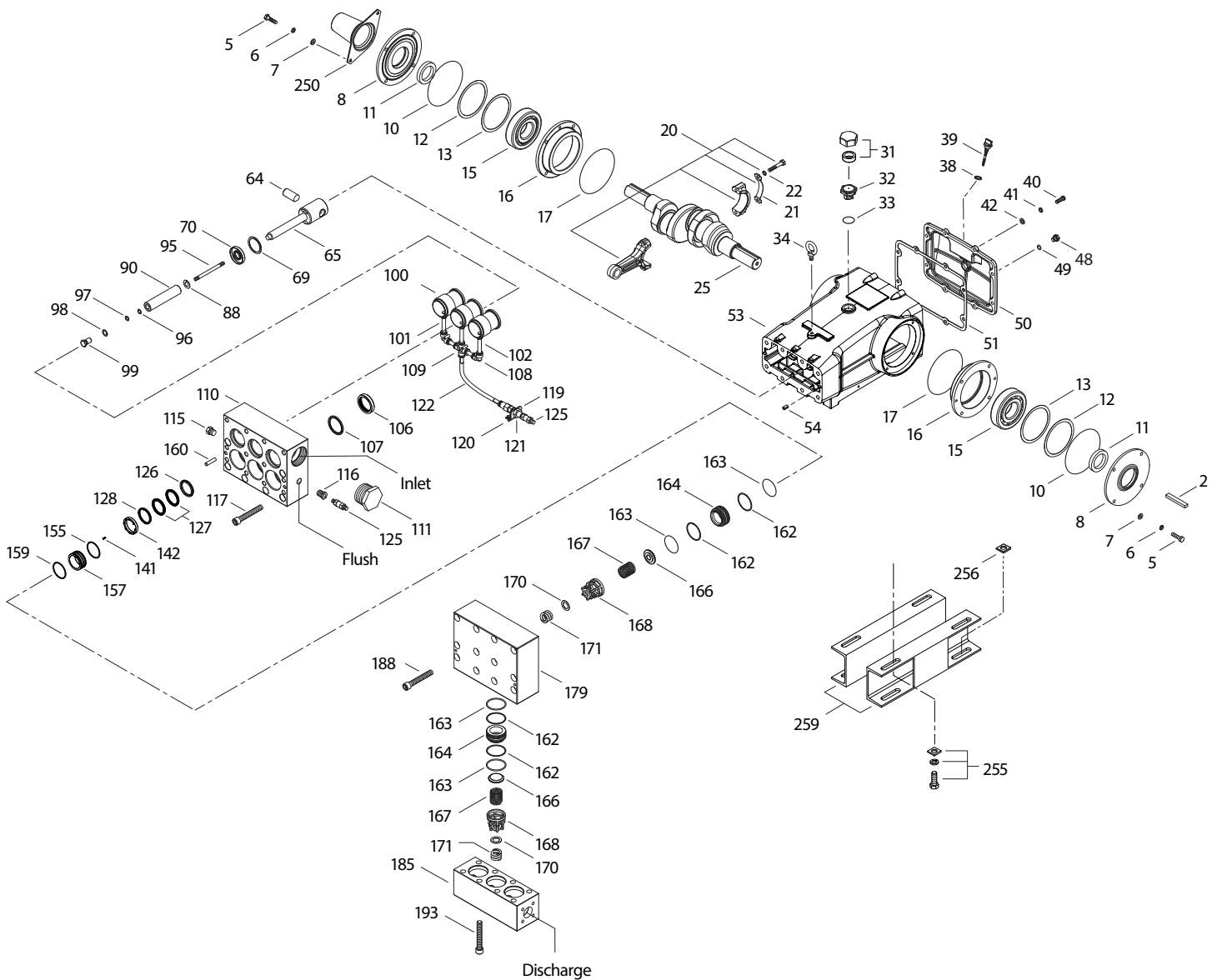
SPECIFICATIONS	U.S. Measure	Metric Measure
Flow	50.0 gpm	189.2 lpm
Pressure Range	400–1200 psi	27.6–83 bar
Pump RPM*	450	450
Inlet Pressure Range**	300–570 psi	21–39 bar
Min. Liquid Temperature	-20° F	-29° C
Bore	2.165"	55 mm
Stroke	2.579"	65.5 mm
Crankcase Capacity	10 qts	9.46 l

SPECIFICATIONS	U.S. Measure	Metric Measure
Inlet Ports (2)	2½" NPT(F)	2½" NPT(F)
Flush Ports (2)	½" NPT(F)	½" NPT(F)
Discharge Ports (2)	1¼" NPT(F)	1¼" NPT(F)
Shaft Diameter	1.772"	45 mm
Pulley Mounting	Either Side	Either Side
Weight	355 lbs	161 kg
Dimensions	28.95 x 24.37 x 13.15"	735 x 619 x 334 mm

*Pump minimum is 100 RPM.

** Temperature and pressure must be maintained to keep incoming CO₂ in a liquid state.

EXPLODED VIEW



(Parts List on Reverse Side)

April 2022

PARTS LIST

ITEM PN	MATL	DESCRIPTION	QTY
2	43048	STL Key (M14 x 9 x 90)	1
5	89728	S Screw, HH (M10 x 40) (See Tech Bulletin 074)	8
6	15847	S Lockwasher (M10)	8
7	19934	S Washer, Flat (M10)	8
8	29443	ALE Cover, Bearing, Outer (See Tech Bulletin 118)	2
10	29444	NBR O-Ring, Bearing Cover-70D	2
11	11443	NBR Seal, Oil, Crankshaft	2
12	126594	STCP R Washer, Shim (M120 x 0.3)	0-2
13	126595	STCP R Washer, Shim (M120 x 0.5)	0-2
15	29441	STL Bearing, Roller	2
16	29442	STL Cover, Bearing, Inner	2
17	29444	NBR O-Ring, Bearing Cover-70D	2
20	766612	BBHS Assembly, Connecting Rod (Includes: 21, 22) (See Tech Bulletin 074)	3
21	126560	STCP R Washer, Locking	3
22	126593	STCP R Washer, Shim (M10.5 x 1.5)	6
25	29440	FCM Crankshaft, Dual Shaft (M65.5)	1
31	828710	PE Protector, Oil Cap with Foam Gasket	1
32	43211	ABS Cap, Oil Filler	1
33	14177	NBR O-Ring, Filler Cap-70D	1
34	126743	STCP R Bolt, Eye (M12) (For Lifting Pump Only)	1
38	129343	RBR Gasket, Flat Flex	1
39	27769	ABS Stick, Dip	1
40	89627	S Screw, HH (M10 x 30) (See Tech Bulletin 074)	8
41	15847	S Lockwasher (M10)	8
42	19934	S Washer, Flat (M10)	8
48	25625	STCP Plug, Drain (1/4" x 19 BSP)	1
49	23170	NBR O-Ring, Drain Plug-70D	1
50	29438	ALE Cover, Rear (See Tech Bulletin 118)	1
51	129386	NBR Gasket, Rear Cover	1
53	133667	ALE Crankcase (Includes: 34, 54) (See Tech Bulletin 118)	1
54	43282	S Pin, Guide	2
64	769481	CM Pin, Crosshead	3
65	76384	SSZZ Rod, Plunger	3
69	126588	STCP R Washer, Oil Seal	3
70	29454	NBR Seal, Oil Crankcase	3
88	45677	SS Washer, Keyhole (M16)	3
90	44749	CC Plunger (M55 x 185)	3
95	44748	SS Stud, Plunger Retainer (M14 x 147)	3
96	20214	PTFE Backup Ring, Plunger Retainer	3
97	17616	NBR O-Ring, Plunger Retainer-80D	3
98	44751	SS Gasket, Plunger Retainer	3
99	44750	SS Retainer, Plunger (M14) (See Tech Bulletin 074)	3
100	703128	D Retainer, Seal	3
101	703146	BBNP Adapter, Tubing [3/8" NPT(M) x 12MM]	3
102	703142	NY Tubing (12MM)	6
103	998550	NY Nipple [1/2" NPT(M) x 1/4" NPT(M)]	1

ITEM PN	MATL	DESCRIPTION	QTY
106	703299	SFTB Seal, Low-Pressure, with SS-Spring	3
107	46167	SS Spacer, Low-Pressure	3
108	703145	D Elbow (12MM)	2
109	703144	D Cross, Barb (12MM)	1
110	701343	SS Manifold, Inlet, Block-Style, Flushed	1
111	701353	SS Plug, Inlet Manifold [2 1/2" NPT(M)]	1
115	45156	SS Plug, Hex Head [1/2" NPT(M)]	1
116	998032	SS Bushing [1/2" NPT(M) x 1/4" NPT(M)]	1
117	89694	S Screw, HSH (M16 x 110) (See Tech Bulletin 074)	6
119	34347	STZP Bracket	1
120	990776	STZP R Screw, HHC (1/4" - 20 x 1/2")	2
121	34338	BB Union, [1/4" NPT(M)]	1
122	703147	BBNP Adapter, Tubing [1/2" NPT(F) x 12MM]	1
125	33937	SS Valve, Check [1/4" NPT(M)]	2
126	45771	SS Adapter, Female	3
127	44764	STG V-Packing	6
128	45772	SS Adapter, Male	3
141	44943	SS Spring, Coil	24
142	45383	SS Spacer with Coil Springs	3
155	18178	NBR O-Ring, V-Packing Spacer-80D	3
157	45321	SS Spacer, V-Packing with Coil Springs	3
159	18178	NBR O-Ring, V-Packing Spacer-80D	3
160	44756	S Pin, Guide	2
162	23116	PTFE Backup Ring, Seat	12
163	12392	NBR O-Ring, Seat-70D	12
164	46173	SS Seat	6
166	44774	SS Valve	6
167	44773	SS Spring	6
168	44775	PVDF Retainer, Spring	6
170	44776	SS Washer, Retainer	6
171	701354	SS Spring, Coil Retainer	6
179	46171	SS Manifold, Valve, Block-Style	1
185	46176	SS Manifold, Discharge, Block Style	1
188	89694	S Screw, HSH (M16 x 110), Lower (See Tech Bulletin 074)	12
193	89694	S Screw, HSH (M16 x 110), Upper (See Tech Bulletin 074)	8
250	29445	ALE Protector, Shaft (See Tech Bulletin 118)	1
255	33243	STZP Direct, Mount (Included with Pump)	1
256	29649	STCP Washer, Slant (M16) (To Shim and Align Mounting Bolt [Not Included] Through the Box Rail and Mounting Base)	4
259	126604	STCP R Rail, Box (Included with Pump)	2
275	990014	STL Hub, "B", M45 with Keyway (Not Shown)	1
283	34314	— Kit, Oil Drain (3/8" x 48") (Not Shown)	1
300	703134	NBR Kit, Seal (Includes: 97, 106, 127, 155, 159)	1
310	34105	NBR Kit, Valve (Includes: 162-164, 166-168, 170)	2
—	6102	— Oil, Jug (2.5 gal) ISO-68 Hydraulic (Fill to Specified Crankcase Capacity Prior to Start-up)	1
—	6139	— Lubricant, Antiseize (8 oz) (See Tech Bulletin 095)	1

R Components comply with RoHS Directive.

For additional technical information see www.catpumps.com/literature/tech-bulletins.

MATERIAL CODES (Not Part of Part Number): ABS=ABS Plastic ALE=Aluminum Epoxy BB=Brass BBHS=Brass/High Strength BBNP=Brass/Nickel Plated CC=Ceramic
 CM=ChromeMoly D=Acetal FCM=Forged Chrome-Moly NBR=Medium Nitrile (Buna-N) NY=Nylon PE=Polyethylene PTFE=Pure Polytetrafluoroethylene
 PVDF=Polyvinylidene Fluoride RBR=Rubber S=304SS SS=316SS SFTB=Special Blend Black SSZZ=316SSZamak STCP=Steel/Chrome Plated
 STG=Special Blend PTFE White STL=Steel STZP=Steel/Zinc Plated

⚠ CAUTIONS AND WARNINGS

All high-pressure systems require a primary pressure regulating device (i.e. regulator, unloader) and a secondary pressure relief device (i.e. pop-off valve, relief valve). Failure to install such relief devices could result in personal injury or damage to pump or property. Cat Pumps does not assume any liability or responsibility for the operation of a customer's high-pressure system.

Read all CAUTIONS and WARNINGS before commencing service or operation of any high-pressure system. The CAUTIONS and WARNINGS are included in each Service Manual and with each Accessory Data sheet. CAUTIONS and WARNINGS can also be viewed online at www.catpumps.com/dynamic-literature/cautions-and-warnings or can be requested directly from Cat Pumps.

WARRANTY

View the Limited Warranty online at www.catpumps.com/literature/cat-pumps-limited-warranty