

MODEL 30.CO2 30RS.CO2



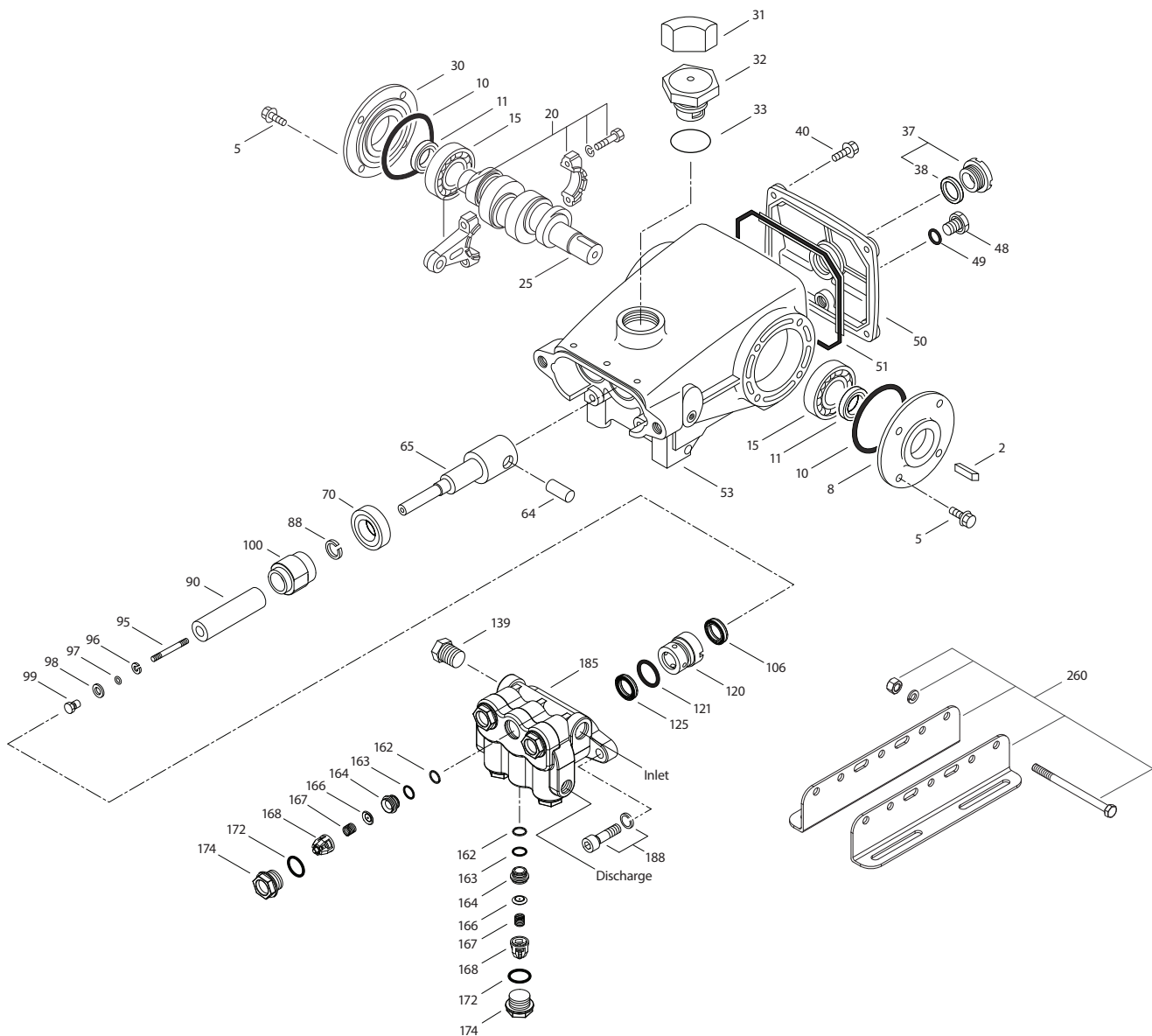
SPECIFICATIONS	U.S. Measure	Metric Measure
Flow	0.68 gpm	2.57 lpm
Pressure Range	400–2200 psi	28–152 bar
Pump RPM*	450 rpm	450 rpm
Inlet Pressure Range**	300–750 psi	21–52 bar
Min. Liquid Temperature	-20° F	-29° C
Bore	0.787"	20 mm
Stroke	0.315"	8 mm

SPECIFICATIONS	U.S. Measure	Metric Measure
Crankcase Capacity	18 oz	0.53 l
Inlet Ports (2)	½" NPT(F)	½" NPT(F)
Discharge Ports (2)	⅜" NPT(F)	⅜" NPT(F)
Shaft Diameter	0.787"	20 mm
Weight	20.1 lbs	9.1 kg
Dimensions	11.73 x 8.27 x 5.28"	298 x 210 x 134 mm

* Pump minimum is 100 RPM

** Temperature and pressure must be maintained to keep incoming CO₂ in a liquid state.

EXPLODED VIEW



(Parts List on Reverse Side)

May 2022

PARTS LIST

ITEM	PN	MATL	DESCRIPTION	QTY
2	30057	STL	Key (M6 x 6 x 25)	1
5	125824	STCP R	Screw, HHC Sems (M6 x 16) (See Tech Bulletin 074)	8
8	43344	AL	Cover, Bearing	1
10	43343	NBR	O-Ring, Bearing Cover-70D	2
11	43222	NBR	Seal, Oil, Crankshaft	1
15	14480	STL	Bearing, Ball	2
20	45883	HS	Rod, Connecting, Assembly (See Tech Bulletin 074)	3
25	44923	FCM	Crankshaft, Single End (M8)	1
30	44949	AL	Cover, Blind Bearing	1
31	828710	PE	Protector, Oil Cap with Foam Gasket	1
32	43211	ABS	Cap, Oil Filler	1
33	14177	NBR	O-Ring, Filler Cap-70D	1
37	92241	PC	Gauge, Oil, Bubble with Gasket-80D	1
38	44428	NBR	Gasket, Flat, Oil Gauge-80D	1
40	126541	STCP R	Screw, HHC Sems (M6 x 20) (See Tech Bulletin 074)	4
48	25625	STCP	Plug, Drain (1/4" x 19 BSP)	1
49	23170	NBR	O-Ring, Drain Plug-70D	1
50	48772	AL	Cover, Rear	1
51	48773	NBR	O-Ring, Rear Cover	1
53	48769	AL	Crankcase	1
64	43351	CM	Pin, Crosshead	3
65	45908	ZZCP	Rod, Plunger, Short	3
70	43228	NBR	Seal, Oil, Crankcase	3
88	45697	S	Washer, Keyhole (M18 x 10)	3
90	43367	CC	Plunger (M20 x 72)	3
95	126558	STCP R	Stud, Plunger Retainer (M6 x 64.5)	3
96	43235	PTFE	Backup Ring, Plunger Retainer	3
97	17399	NBR	O-Ring, Plunger Retainer-80D	3

ITEM	PN	MATL	DESCRIPTION	QTY
98	45891	CU	Gasket, Plunger Retainer (12.5MM)	3
99	46504	S	Retainer, Plunger (M6) (See Tech Bulletin 074)	3
100	701765	SS	Retainer, Seal	3
106	701763	SFTA	Seal, Low-Pressure with NIH-Spring	3
120	45679	BB	Case, Seal	3
121	14200	NBR	O-Ring, Seal Case-70D	3
125	701764	SFTA	Seal, High-Pressure with SS-Support	3
139	22179	BBCP	Plug, Inlet [1/2" NPT(M)] (Not Shown)	1
162	48361	D	Backup Ring, Seat	6
163	43358	NBR	O-Ring, Seat-70D	6
164	43725	S	Seat	6
166	43723	S	Valve	6
167	43750	S	Spring	6
168	44565	PVDF	Retainer, Spring	6
172	17615	NBR	O-Ring, Valve Plug-75D	6
174	46756	BB	Plug, Valve (See Tech Bulletin 074)	6
185	† 44837	BBCP	Head, Manifold	1
188	126520	STCP R	Screw, HSH Sems (M10 x 35) (See Tech Bulletin 074)	2
255	30243	STZP	Mount, Direct (Not Shown)	1
260	30611	STZP R	Rail, Assembly	1
270	30633	STL	Pulley, Key Assembly (Includes: 30058, 30057) (Not Shown)	1
275	30944	STL	Hub "H", Key Assembly (Includes: 30945, 30057) (Not Shown)	1
300	76152	NBR*	Kit, Seal (Includes: 97, 106, 121, 125)	1
310	30821	NBR	Kit, Valve (Includes: 162, 163, 164, 166, 167, 168, 172)	2
350	30696	STZP	Pliers, Reverse (Not Shown)	1
351	33004	STZP	Seal Case Socket, 1/2" Drive (Not Shown)	1
—	6107	—	Oil, Bottle (21 oz) ISO 68 Hydraulic (Fill to Specified Crankcase Capacity Prior to Start-up)	1

Italics are optional items. R Components comply with RoHS Directive.

* Review material codes for individual items (SFTA generally may be used as an alternative).

† Production parts different from service parts. For additional technical information see www.catpumps.com/literature/tech-bulletins.

MATERIAL CODES (Not Part of Part Number): ABS=ABS Plastic AL=Aluminum BB=Brass BBCP=Brass/Chrome Plated CC=Ceramic CM=Chrome-Moly
 CU=Copper D=Acetal FCM=Forged Chrome-Moly HS=High Strength NBR=Medium Nitrile (Buna-N) PC=Poly Carbonate PE=Polyethylene PTFE=Pure Polytetrafluoroethylene
 PVDF=Polyvinylidene Fluoride S=304SS SFTA=Special Blend PTFE Tan SS=316SS STCP=Steel/Chrome Plated STL=Steel STZP=Steel/Zinc Plated
 ZZCP=Zinc/Chrome Plated

⚠ CAUTIONS AND WARNINGS

All high-pressure systems require a primary pressure regulating device (i.e. regulator, unloader) and a secondary pressure relief device (i.e. pop-off valve, relief valve). Failure to install such relief devices could result in personal injury or damage to pump or property. Cat Pumps does not assume any liability or responsibility for the operation of a customer's high-pressure system.

Read all CAUTIONS and WARNINGS before commencing service or operation of any high-pressure system. The CAUTIONS and WARNINGS are included in each Service Manual and with each Accessory Data sheet. CAUTIONS and WARNINGS can also be viewed online at www.catpumps.com/dynamic-literature/cautions-and-warnings or can be requested directly from Cat Pumps.

WARRANTY

View the Limited Warranty online at www.catpumps.com/literature/cat-pumps-limited-warranty