

# DATA SHEET

## HORIZONTAL SHUT-OFF GUN



**Brass Gun Model: 32183**



Model 32183 Shown

### FEATURES

- Unique valve design permits a smooth, gradual pull on the trigger for gradual build-up of pressure.
- Durable nylon blended body and trigger provide longer life and superior strength.
- Quality construction and stainless steel valve and seat ensure thousands of continuous cycles.
- Special safety latch prevents unintentional operation.

### SPECIFICATIONS

|                     | U.S.                 | Metric              |
|---------------------|----------------------|---------------------|
| Maximum Flow        | 31.7 gpm             | 120 lpm             |
| Maximum Pressure    | 4060 psi             | 280 bar             |
| Maximum Temperature | 210° F               | 100° C              |
| Inlet Port          | 1/2" NPT(F)          | 1/2" NPT(F)         |
| Discharge Port      | 1/2" NPT(F)          | 1/2" NPT(F)         |
| Weight              | 2.69 lbs             | 1.22 kg             |
| Dimensions          | 10.08 x 6.67 x 1.89" | 256 x 169.5 x 48 mm |

Use only at above specifications to ensure proper gun life and performance.

### SELECTION

Select a gun to match the system flow, pressure requirements, temperature and function being performed. This special industrial gun has a unique trigger design to minimize operator fatigue in high-pressure applications.

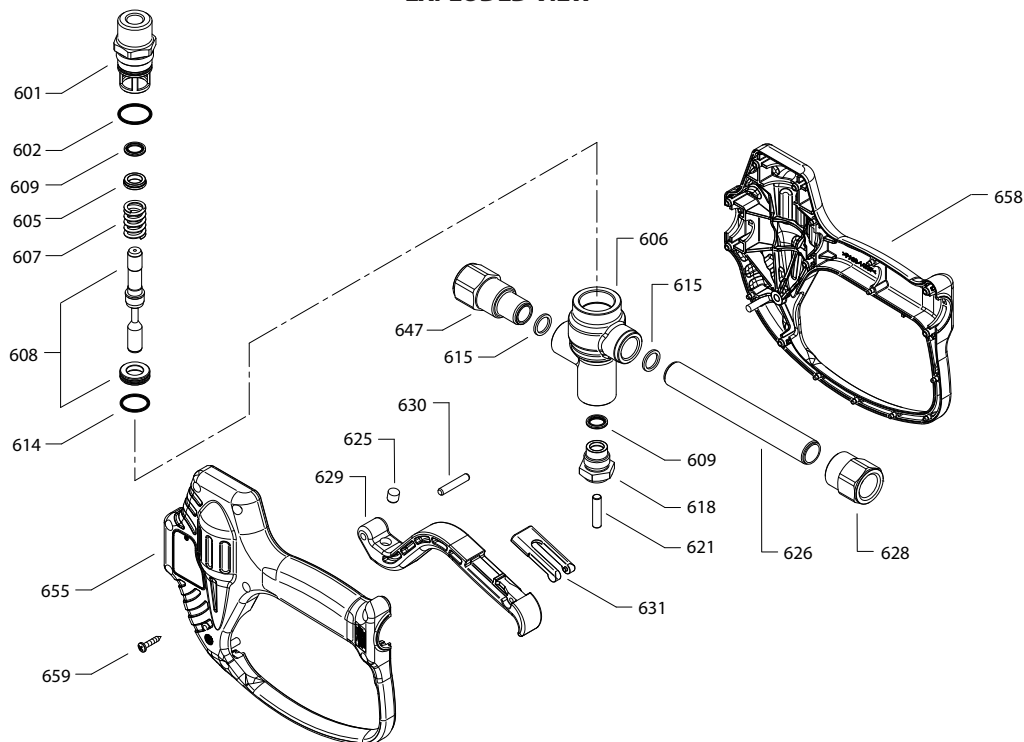
### INSTALLATION

Install the appropriate regulator or unloader when using a shut-off gun to avoid pressure spikes when the gun is shut off. Severe damage can occur to high-pressure systems without this safety device.

### OPERATION

Flow through the gun occurs by squeezing the trigger. Because of the unique valve design, a gradual pull on the trigger will permit a gradual build-up of pressure up to 4,050 psi. Squeezing the trigger lifts the piston off the seat and allows flow through the flow ports and around the perimeter of the seat. A special safety latch locks the gun closed to prevent unintentional operation.

## EXPLODED VIEW



## PARTS LIST

| ITEM | P/N   | MATL | DESCRIPTION                | QTY |
|------|-------|------|----------------------------|-----|
| 601  | —     | BB   | Nut, Retaining             | 1   |
| 602  | 32926 | NBR  | O-Ring, Nut                | 1   |
| 605  | —     | BB   | Spacer                     | 1   |
| 606  | —     | BB   | Body                       | 1   |
| 607  | 39409 | S    | Spring                     | 1   |
| 608  | —     | S    | Seat, Piston (2-Piece Set) | 1   |
| 609  | 39421 | NBR  | Seal, Stem                 | 2   |
| 614  | 33043 | NBR  | O-Ring, Seat               | 1   |
| 615  | —     | CU   | Gasket                     | 2   |
| 618  | 39408 | BB   | Retainer, Piston           | 1   |
| 621  | —     | S    | Rod, Actuator              | 1   |
| 625  | —     | S    | Striker                    | 1   |

| ITEM | P/N   | MATL | DESCRIPTION                                     | QTY |
|------|-------|------|---|-----|
| 626  | —     | S    | Tube  | 1   |
| 628  | —     | S    | Fitting, Inlet, (1/2" NPT[F])                   | 1   |
| 629  | 39406 | NY   | Trigger (Black)                                 | 1   |
| 630  | 33676 | BB   | Pin, Trigger                                    | 1   |
| 631  | —     | NY   | Latch, Safety, Red                              | 1   |
| 647  | —     | S    | Fitting, Discharge (1/2" NPT[F])                | 1   |
| 655  | —     | NY   | Handle, Left Half                               | 1   |
| 658  | —     | NY   | Handle, Right Half                              | 1   |
| 659  | 30409 | S    | Screw (M3.5 x 18)                               | 7   |
| 668  | 32222 | NBR  | Kit, Repair (Includes: 602, 607, 608, 609, 614) | 1   |

*Italics are optional items.*

MATERIAL CODES (Not Part of Part Number): BB=Brass  
CU=Copper NBR=Medium Nitrile (Buna-N) NY=Nylon S=304SS

## TROUBLESHOOTING

Water leaking out the discharge of the gun

- Object lodged between the piston and seat
- Seat worn
- O-ring under the seat is worn

Water leaking out the lever area

- Stem seal around the actuator rod is worn

## ⚠ WARNING

### SKIN PUNCTURE HAZARD

**Do not allow spray to contact any part of the body or animals. Pumped liquids under high pressure can pierce skin and underlying tissue or can deflect debris leading to serious personal injury or death.**

1. Relieve all line pressure in the inlet line to the pump and discharge line from the pump before performing any maintenance on the gun.
2. When high-pressure gun is not in use, set safety trigger lock (safety latch) to avoid accidental high-pressure operation and personal injury or property damage.
3. Do not check for leaks with hand. Use a piece of cardboard to check for leaks.
4. Review cleaning procedures to minimize heavy back blasting.
5. Wear adequate safety equipment and clothing when operating a high-pressure sprayer. Never use high-pressure spray with bare feet or exposed skin, and always wear safety glasses.

## ⚠ CAUTIONS AND WARNINGS

All high-pressure systems require a primary pressure regulating device (e.g. regulator, unloader) and a secondary pressure relief device (e.g. pop-off valve, relief valve). Failure to install such relief devices could result in personal injury or damage to pump or property. Cat Pumps does not assume any liability or responsibility for the operation of a customer's high-pressure system.

Read all CAUTIONS and WARNINGS before commencing service or operation of any high-pressure system. The CAUTIONS and WARNINGS are included in each Service Manual and with each Accessory Data sheet. CAUTIONS and WARNINGS can also be viewed online at [www.catpumps.com/dynamic-literature/cautions-and-warnings](http://www.catpumps.com/dynamic-literature/cautions-and-warnings) or can be requested directly from Cat Pumps.

## WARRANTY

View the Limited Warranty online at [www.catpumps.com/literature/cat-pumps-limited-warranty](http://www.catpumps.com/literature/cat-pumps-limited-warranty)