

MODEL 1541CM.CO2



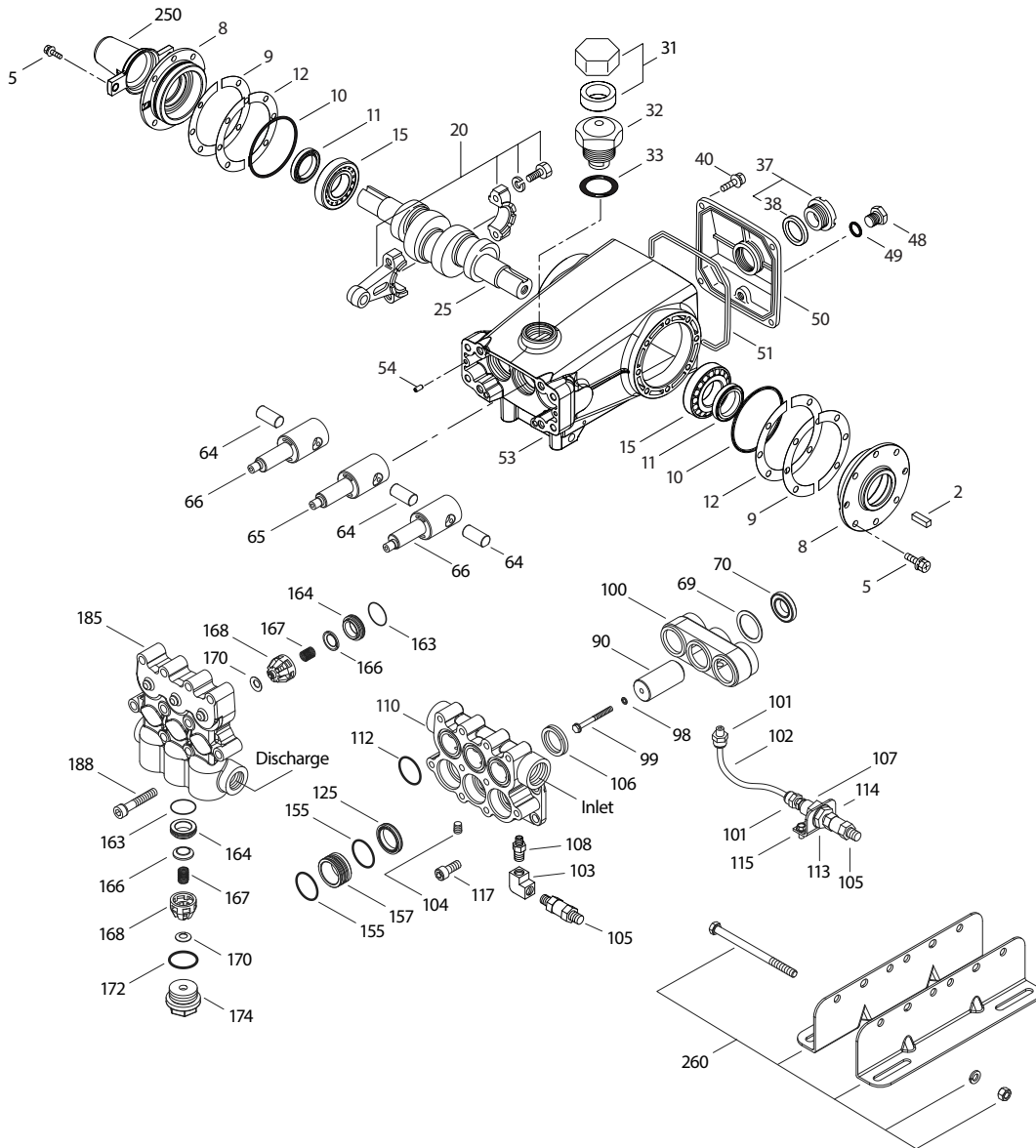
SPECIFICATIONS	U.S. Measure	Metric Measure
Flow	7.0 gpm	26 lpm
Pressure Range	400–1200 psi	27.5–83 bar
Pump RPM*	450	450
Inlet Pressure Range**	300–400 psi	21–27.5 bar
Minimum Liquid Temperature**	-20° F	-29° C
Bore	1.181"	30 mm
Stroke	1.181"	30 mm
Crankcase Capacity	42 oz	1.26 l

SPECIFICATIONS	U.S. Measure	Metric Measure
Inlet Ports (2)	1" NPT(F)	1" NPT(F)
Flush Ports (2)	1/8" NPT(F)	1/8" NPT(F)
Discharge Ports (2)	3/4" NPT(F)	3/4" NPT(F)
Shaft Diameter	1.181"	30 mm
Pulley Mounting	Either Side	Either Side
Weight	42.6 lbs	21 kg
Dimensions	14.57 x 13.0 x 7.2"	370 x 330 x 183 mm

*Pump minimum is 100 RPM.

**Temperature and pressure must be maintained to keep incoming CO₂ in a liquid state.

EXPLODED VIEW



(Parts List on Reverse Side)

December 2022

PARTS LIST

ITEM	PN	MATL	DESCRIPTION	QTY	ITEM	PN	MATL	DESCRIPTION	QTY
2	990036	STL	Key (M8 x 7 x 40) (Use With 990012 "B" Hub)	1	100	76836	AL	Retainer, Vented	1
	30067	STL	Key (M8 x 7.5 x 25) (Use With 30059 "H" Hub)	1	101	999490	D	Adapter, ¼"	2
5	49651	S	Screw, HHC Sems (M8 x 20) (See Tech Bulletin 074)	8	102	999492	NY	Tubing, ¼"	1
8	134805	ALE	Covering, Bearing	2	103	999747	BB	Elbow (¼" NPT[F])	1
9	855043	FBR	Shim, Split 2-Piece	0-2	104	34507	BB	Plug, (½" NPT[M])	1
10	11340	NBR	O-Ring, Bearing Cover-70D	2	105	33937	SS	Valve, Check (¼" NPT[M])	2
11	43495	NBR	Seal, Oil, Crankshaft	2	106	702939	ST4	Seal, Low-Pressure With NIH-Spring	3
12	855044	S	Shim, Split 2-Piece	0-2	107	34633	BB	Bushing (¼" NPT[F] x ⅛" NPT[M])	1
15	39060	STL	Bearing, Roller	2	108	34227	BB	Nipple, (¼" NPT(M) x ⅛" NPT[M])	1
20	768600	TNM	Assembly, Connecting Rod (See Tech Bulletin 074)	3	110	134147	SS	Manifold, Inlet, Flushed	1
25	43494	FCM	Crankshaft, Dual End (M30)	1	112	123903	NBR	O-Ring, Inlet Manifold-90D	3
31	828710	PE	Protector, Oil Cap With Polyurethane Gasket	1	113	34338	BB	Union (¼" NPT[M])	1
32	43211	ABS	Cap, Oil Filler	1	114	34347	STZP	Bracket	1
33	14177	NBR	O-Ring, Oil Filler Cap-70D	1	115	990776	STZP R	Screw, HHC (¼" - 20 x ½")	2
37	92241	PC	Gauge, Oil, Bubble With Gasket-80D (See Tech Bulletin 074)	1	117	49044	S	Screw, HSH (M10 x 25) (See Tech Bulletin 074)	4
38	44428	NBR	Gasket, Flat, Oil Gauge-80D	1	125	702945	ST4	Seal, High-Pressure	3
40	92542	S	Screw, HHC Sems (M6 x 20) (See Tech Bulletin 074)	4	155	123903	NBR	O-Ring, High-Pressure Spacer	6
48	25625	STCP	Plug, Drain (¼" x 19 BSP)	1	157	49621	SS	Spacer, High-Pressure	3
49	23170	NBR	O-Ring, Drain Plug-70D	1	163	26143	NBR	O-Ring, Seat-80D	6
50	133576	ALE	Cover, Rear	1	164	49626	SS	Seat	6
51	44834	NBR	O-Ring, Rear Cover-70D	1	166	48686	SS	Valve	6
53	134858	ALE	Crankcase (With Guide Pins)	1	167	48687	SS	Spring	6
54	27488	S	Pin, Guide	2	168	48994	PVDF	Retainer, Spring	6
64	763507	CM	Pin, Crosshead (With Flats)	3	170	49627	SS	Washer, Spring Retainer	6
65	768933	SHS	Rod, Plunger (Center)	1	172	17629	NBR	O-Ring, Valve Plug-80D	3
66	768931	SHS	Rod, Plunger (Outside)	2	174	49628	SS	Plug, Valve (See Tech Bulletin 074)	3
69	126596	STCP R	Washer, Oil Seal	3	185	49623	SS	Manifold, Discharge	1
70	43500	NBR	Seal, Oil, Crankcase	3	188	87952	S	Screw, HSH (M10 x 55) (See Tech Bulletin 074)	10
90	48938	CC	Plunger (M30 x 65)	3	250	855047	NY	Protector, Shaft	1
98	46730	NBR	Washer, Seal-90D	3	260	30613	STZP R	Mount, Rail Assembly	1
99	48201	SS	Retainer, Plunger (See Tech Bulletin 074)	3	300	761770	NBR*	Kit, Seal (Includes: 98, 106, 112, 125, 155)	1
					310	31450	NBR	Kit, Valve Preassembled (Includes: 163, 164, 166, 167, 168, 170, 172)	2
					—	6107	—	Oil, Bottle (21 oz.) ISO-68 Hydraulic (Fill to specified crankcase capacity prior to start-up)	2

Italics are optional items. R Components comply with RoHS Directive. * Review material codes for individual items

(ST4 generally may be used as alternate). For additional technical information see www.catpumps.com/literature/tech-bulletins.

MATERIAL CODES (Not Part of Part Number): ABS=ABS Plastic AL=Aluminum ALE=Aluminum Epoxy BB=Brass CC=Ceramic CM=Chrome-moly D=Acetal FBR=Fiber
FCM=Forged Chrome-moly NBR=Medium Nitrile (Buna-N) NY=Nylon PC=Poly Carbonate PE=Polyethylene PLM=Unspecified Poly PTFE=Pure Polytetrafluoroethylene
PVDF=Polyvinylidene Fluoride S=304SS SHS=304SS/High Strength SS=316SS STCP=Steel/Chrome Plated ST4=Special PTFE 4 STL=Steel
STZP=Steel/Zinc Plated TNM=Special High Strength

⚠ CAUTIONS AND WARNINGS

All high-pressure systems require a primary pressure regulating device (e.g. regulator, unloader) and a secondary pressure relief device (e.g. pop-off valve, relief valve). Failure to install such relief devices could result in personal injury or damage to pump or property. Cat Pumps does not assume any liability or responsibility for the operation of a customer's high-pressure system. Read all CAUTIONS and WARNINGS before commencing service or operation of any high-pressure system. The CAUTIONS and WARNINGS are included in each Service Manual and with each Accessory Data sheet. CAUTIONS and WARNINGS can also be viewed online at www.catpumps.com/dynamic-literature/cautions-and-warnings or can be requested directly from Cat Pumps.

WARRANTY

View the Limited Warranty online at www.catpumps.com/literature/cat-pumps-limited-warranty