

DATA SHEET

VERTICAL MULTISTAGE PUMP



**Stainless Steel
Model:**

815K2SF



(Motor Sold Separately)

SPECIFICATIONS

Size

Suction 300# ANSI Raised Face 2.00"

Discharge 300# ANSI Raised Face 2.00"

HP 5.0 hp (3.7 kW)

RPM 3500 rpm

Liquid handled

Type Of Liquid Clean Water (For Other Clean Liquids, Consult Cat Pumps)

Temperature Range -22°–248° F (-30°–120° C)

Maximum Working Pressure 230 psi (16 bar)

Materials

Impeller AISI 304

Intermediate Casing AISI 304

Bottom Casing AISI 304

Casing Cover AISI 304

Outer Casing AISI 304

Shaft AISI 304

Liner Ring PPS/AISI 304

Motor Bracket Cast Iron

Base Die Cast Aluminum

Lower Pump Bearings Tungsten Carbide

Mechanical Seal Silicon/Carbide/Carbon/FPM

Motor

Type NEMA 184TC Frame

Speed 60 Hz, 3500 rpm (2 Poles)

Direction of Rotation Clockwise When Viewed from Motor End

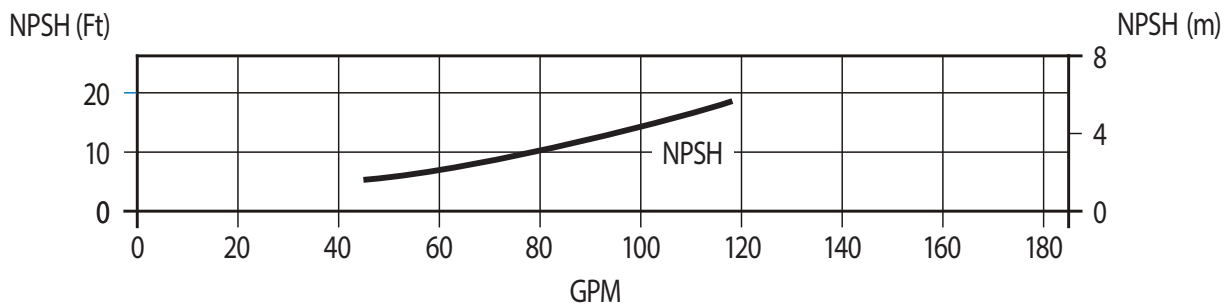
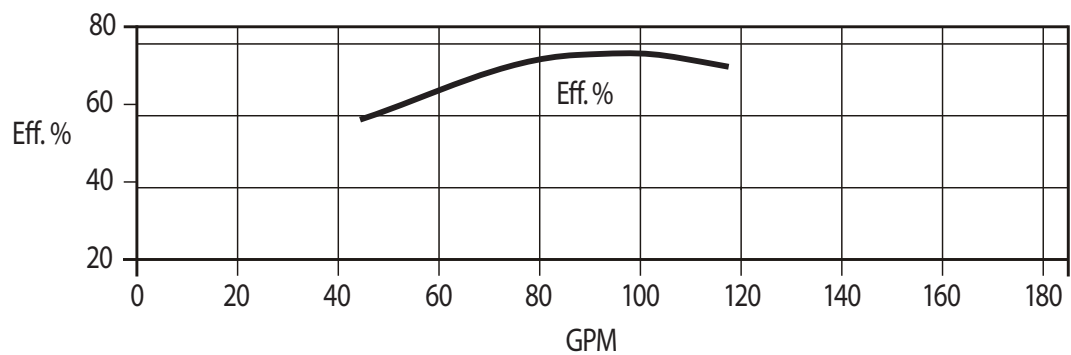
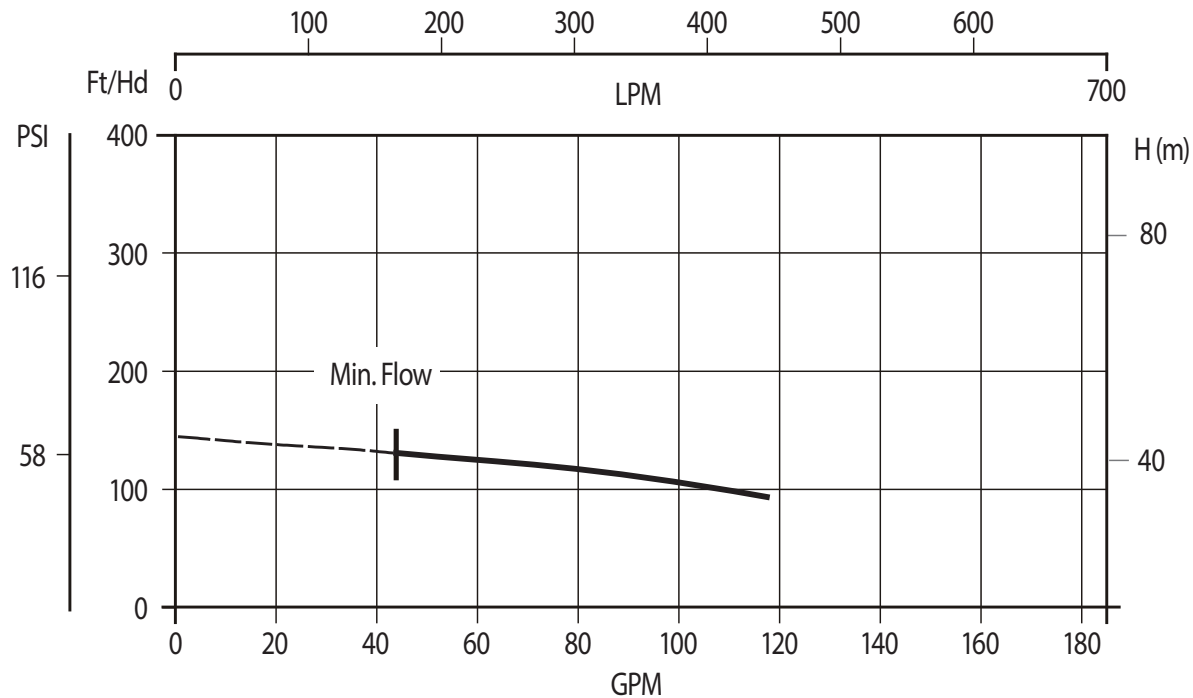
Weight

Pump 51.5 lbs

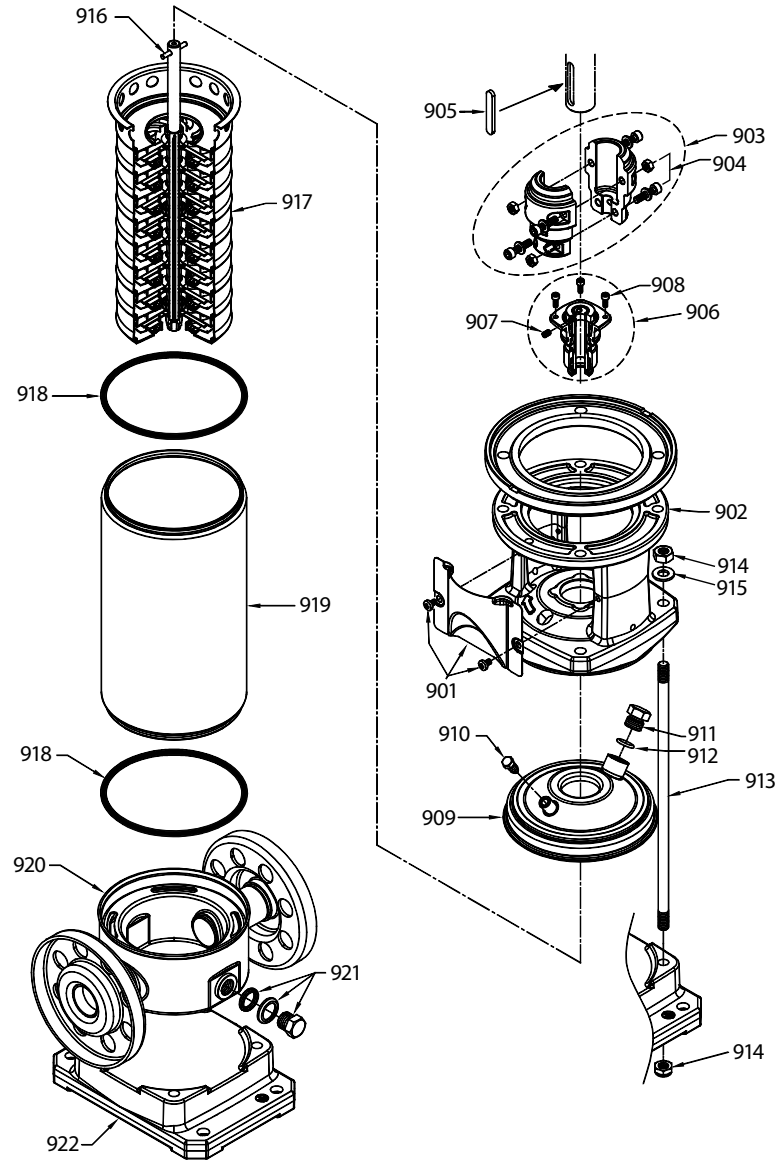
Note: See PN 99SVM001 for complete operating instructions, installation and maintenance manual information.

PERFORMANCE CURVE – 3500 RPM

116 gpm, 138 Ft/Hd



EXPLODED VIEW



PARTS LIST

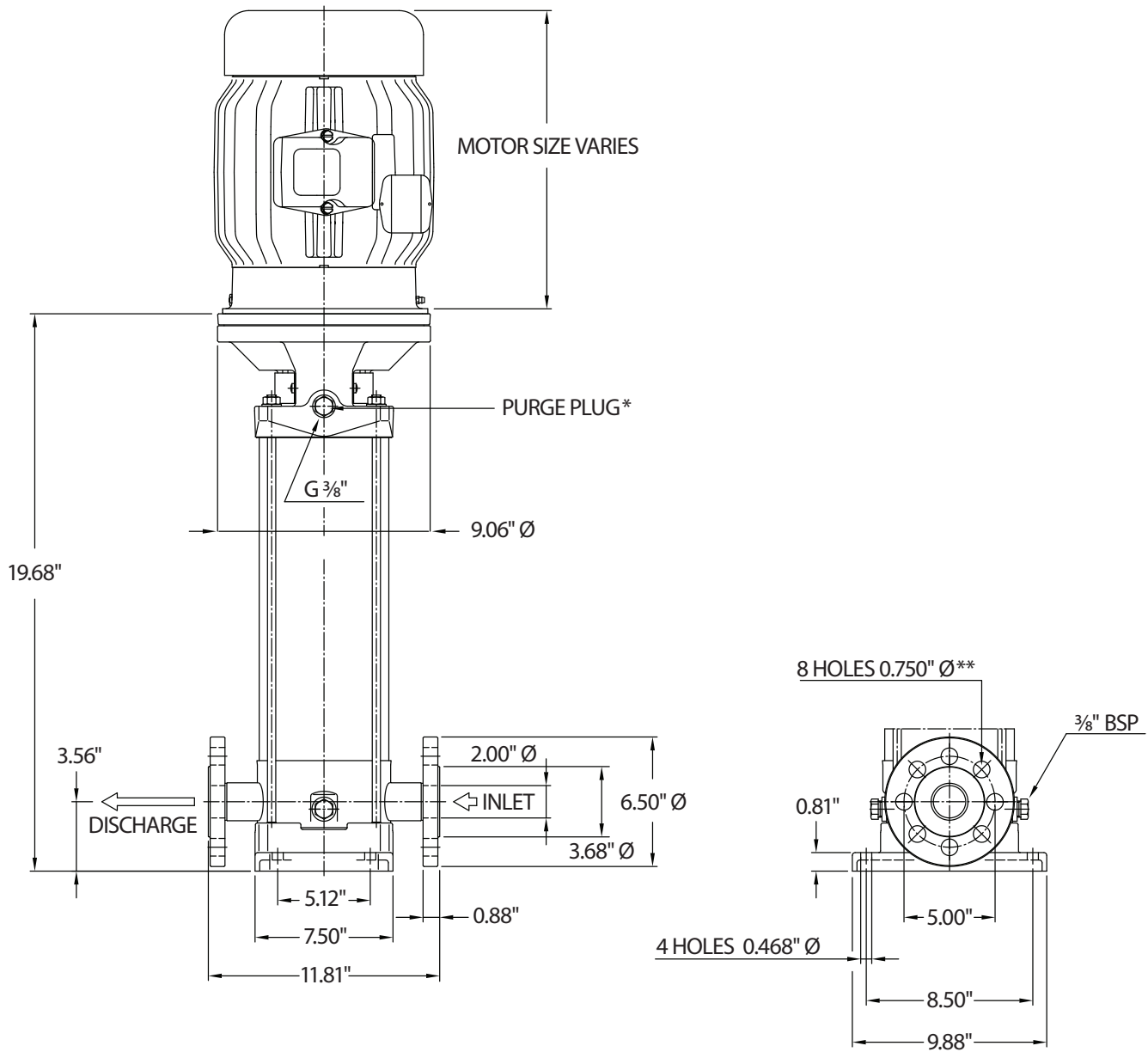
ITEM	P/N	MATL	DESCRIPTION	QTY
901	—	S	Assembly, Coupler Guard	2
902	—	F	Bracket, Motor	1
903	—	AL	Coupling (2-Piece)	1
904	—	STL	Hardware, Coupling (M6)	4
905	—	S	Key, Adjuster	1
906	—	FSC	Seal, Mechanical	1
907	—	STL	Screw, Set	1
908	—	STZP	Screw, Mechanical Seal Seat	4
909	—	S	Cover, Casing	1
910	—	S	Plug, Priming	1
911	—	S	Plug	1
912	—	FPM	O-Ring, Plug	1

ITEM	P/N	MATL	DESCRIPTION	QTY
913	—	STZP	Rod, Tie	4
914	—	STZP	Nut, Tie Rod	4
915	—	STZP	Washer, Tie Rod	4
916	—	STL	Pin, Shaft	1
917	—	S	Assembly, Hydraulic	1
918	—	FPM	O-Ring, Outer Casing	2
919	—	S	Casing, Outer	1
920	—	S	Casing, Bottom	1
921	—	S	Assembly, Plug, Drain	2
922	—	AL	Base	1
923	—	—	Kit, Seal (Includes: 906, 918)	1
924	—	—	Kit, Hydraulic (Includes: 905, 906, 917, 918)	1

Italics are optional items

Material Codes (Not part of part number):

AL=Aluminum F=Cast Iron FPM=Fluorocarbon FSC=FPM with Silicon Carbide S=304 Stainless Steel STL=Steel STZP=Steel/Zinc Plated



*** All air must be purged out before operation to prevent seal damage.**

**** Flange tightening torque = 26 ft-lbs**

⚠ CAUTIONS AND WARNINGS

All high-pressure systems require a primary pressure regulating device (e.g. regulator, unloader) and a secondary pressure relief device (e.g. pop-off valve, relief valve). Failure to install such relief devices could result in personal injury or damage to pump or property. Cat Pumps does not assume any liability or responsibility for the operation of a customer's high-pressure system. Read all CAUTIONS and WARNINGS before commencing service or operation of any high-pressure system. The CAUTIONS and WARNINGS are included in each Service Manual and with each Accessory Data sheet. CAUTIONS and WARNINGS can also be viewed online at www.catpumps.com/dynamic-literature/cautions-and-warnings or can be requested directly from Cat Pumps.

WARRANTY

View the Limited Warranty online at www.catpumps.com/literature/cat-pumps-limited-warranty