

# DATA SHEET

## TURBO NOZZLE



**Brass Models: 7265, 7270**



7270 Series



7265 Series

### FEATURES

- Converts 0° blasting power to a 25° spinning action to agitate dirt loose.
- Quickly mounts to any 1/4" lance.
- Unique spinning action quickly covers a wide path with intense cleaning results.
- Durable ceramic nozzle offers greater resistance to wear.

### SELECTION

Select a nozzle from Nozzle Selection Chart to match the flow and pressure requirements of your system.

### INSTALLATION

Remove any standard spray nozzle from the high-pressure lance. Place PTFE thread tape or pipe thread sealant on threaded lance end and tighten the turbo nozzle onto the lance. Fits standard 1/4" lance rated to nozzle specification.

### OPERATION

The Turbo Nozzle is a specially designed nozzle which converts 0° blasting power to a 25° spinning action to offer greater cleaning intensity. As water enters the inlet fitting, the nozzle assembly begins to spin, resulting in a spiral blasting pattern.

### MAINTENANCE

A loss in system pressure is often the result of a worn or improperly sized nozzle. Periodically replace nozzle.

### SPECIFICATIONS

	U.S.	Metric
<b>7265</b>		
Flow Range	1.1–5.7 gpm	4.2–22 lpm
Pressure Range	1200–3000 psi	83–207 bar
Maximum Temperature	194° F	90° C
Inlet Fitting	1/4" BSP(F)	1/4" BSP(F)
Weight	11.63 oz	.33 kg
Dimensions	3.34 x 1.59"	85 x 40.5 mm
<b>7270</b>		
Flow Range	3.0–10.0 gpm	11.4–38 lpm
Pressure Range	2000–5000 psi	138–345 bar
Maximum Temperature	194° F	90° C
Inlet Fitting	1/4" BSP(F)	1/4" BSP(F)
Weight	25.5 oz	.72 kg
Dimensions	4.42 x 2.16"	112.5 x 55 mm

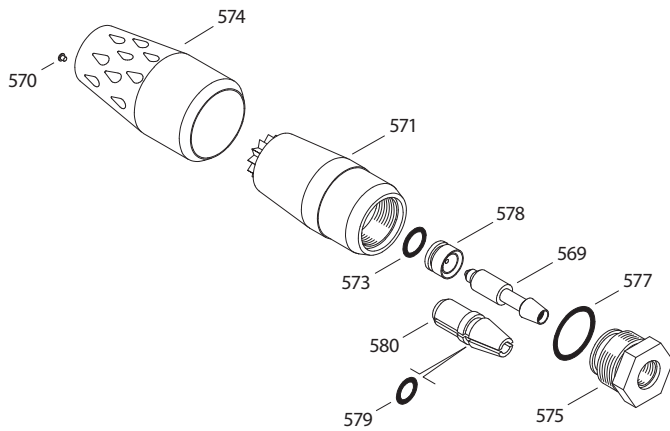
### 7265 NOZZLE SELECTION CHART

		Nozzle Volume (gpm) at Various Pressures (psi)				
Model	Nozzle Size	1200 (83)	1500 (103)	2000 (138)	2500 (172)	3000 (207)
7265.20	2.0	1.1	1.2	1.4	1.6	1.7
7265.30	3.0	1.6	1.9	2.1	2.4	2.6
7265.35	3.5	1.9	2.2	2.5	2.7	3.0
7265.40	4.0	2.2	2.5	2.8	3.1	3.5
7265.45	4.5	2.4	2.8	3.0	3.6	3.9
7265.50	5.0	2.8	3.1	3.6	4.0	4.4
7265.55	5.5	3.0	3.4	3.8	4.4	4.8
7265.60	6.0	3.2	3.7	4.2	4.8	5.2
7265.65	6.5	3.6	4.0	4.6	5.2	5.7

### 7270 NOZZLE SELECTION CHART

		Nozzle Volume (gpm) at Various Pressures (psi)				
Model	Nozzle Size	2000 (138)	2500 (172)	3000 (207)	4000 (275)	5000 (345)
7270.45	4.5	3.0	3.6	3.9	4.5	5.0
7270.55	5.5	3.8	4.4	4.8	5.5	6.2
7270.65	6.5	4.6	5.2	5.7	6.5	7.3
7270.80	8.0	5.6	6.2	7.0	8.0	8.9
7270.90	9.0	6.4	7.1	7.8	9.0	10.0

## 7265 EXPLODED VIEW

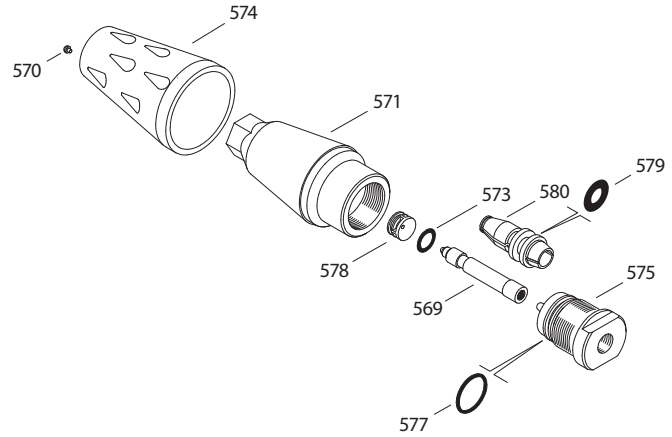


### 7265 SERIES PARTS LIST

ITEM	P/N	MATL	DESCRIPTION	QTY
569	—	BB/CC	Nozzle Assembly (2.0) Light Green (Includes: 569, 573, 577, 578, 579, 580)	1
	—	BB/CC	Nozzle Assembly (3.0) White (Includes: 569, 573, 577, 578, 579, 580)	1
	31113	BB/CC	Nozzle Assembly (3.5) Brown (Includes: 569, 573, 577, 578, 579, 580)	1
	31114	BB/CC	Nozzle Assembly (4.0) Dark Yellow (Includes: 569, 573, 577, 578, 579, 580)	1
	—	BB/CC	Nozzle Assembly (4.5) Dark Blue (Includes: 569, 573, 577, 578, 579, 580)	1
	31116	BB/CC	Nozzle Assembly (5.0) Light Purple (Includes: 569, 573, 577, 578, 579, 580)	1
	—	BB/CC	Nozzle Assembly (5.5) Red (Includes: 569, 573, 577, 578, 579, 580)	1
	31630	BB/CC	Nozzle Assembly (6.0) Dark Green (Includes: 569, 573, 577, 578, 579, 580)	1
	31119	BB/CC	Nozzle Assembly (6.5) Light Blue (Includes: 569, 573, 577, 578, 579, 580)	1
570	—	NY	Plug	1
571	—	BB	Body	1
573	—	NBR	O-Ring, Seat	1
574	31241	—	Protector, Nozzle	1
575	—	BB	Fitting, Inlet (2.0) 1/4" BSPF	1
	—	BB	Fitting, Inlet (3.0) 1/4" BSPF	1
	—	BB	Fitting, Inlet (3.5) 1/4" BSPF	1
	—	BB	Fitting, Inlet (4.0) 1/4" BSPF	1
	—	BB	Fitting, Inlet (4.5) 1/4" BSPF	1
	—	BB	Fitting, Inlet (5.0) 1/4" BSPF	1
	—	BB	Fitting, Inlet (5.5) 1/4" BSPF	1
	—	BB	Fitting, Inlet (6.0) 1/4" BSPF	1
	—	BB	Fitting, Inlet (6.5) 1/4" BSPF	1
577	—	NBR	O-Ring, Fitting Inlet	1
578	—	CC	Seat	1
579	—	NBR	O-Ring, Nozzle Holder	1
580	—	NY	Holder, Nozzle	1

MATERIAL CODES (Not Part of Part Number):  
BB=Brass CC=Ceramic NBR=Medium Nitrile (Buna-N) NY=Nylon

## 7270 EXPLODED VIEW



### 7270 SERIES PARTS LIST

ITEM	P/N	MATL	DESCRIPTION	QTY
569	31105	BB/CC	Nozzle Assembly (4.5) Dark Blue (Includes: 569, 573, 577, 578, 579, 580)	1
	31107	BB/CC	Nozzle Assembly (5.5) Red (Includes: 569, 573, 577, 578, 579, 580)	1
	31108	BB/CC	Nozzle Assembly (6.5) Light Blue (Includes: 569, 573, 577, 578, 579, 580)	1
	—	BB/CC	Nozzle Assembly (8.0) Silver (Includes: 569, 573, 577, 578, 579, 580)	1
	31109	BB/CC	Nozzle Assembly (9.0) Gold (Includes: 569, 573, 577, 578, 579, 580)	1
570	—	NY	Plug	1
571	—	BB	Body	1
573	—	NBR	O-Ring, Seat	1
574	—	—	Protector, Nozzle	1
575	31329	BB	Fitting, Inlet (4.5) 1/4" BSPF	1
	—	BB	Fitting, Inlet (5.5) 1/4" BSPF	1
	—	BB	Fitting, Inlet (6.5) 1/4" BSPF	1
	31658	BB	Fitting, Inlet (8.0) 1/4" BSPF	1
	—	BB	Fitting, Inlet (9.0) 1/4" BSPF	1
577	—	NBR	O-Ring, Fitting Inlet	1
578	—	CC	Seat	1
579	—	NBR	O-Ring, Nozzle Holder	1
580	—	NY	Holder, Nozzle	1

MATERIAL CODES (Not Part of Part Number):  
BB=Brass CC=Ceramic NBR=Medium Nitrile (Buna-N) NY=Nylon

### TROUBLESHOOTING

Problems	Probable Cause	Solution
Water leaking out the discharge of the gun	<ul style="list-style-type: none"> <li>Debris lodged between the seat and ball</li> <li>Seat worn</li> <li>O-ring under seat worn</li> </ul>	<ul style="list-style-type: none"> <li>Remove debris</li> <li>Replace seat</li> <li>Replace O-ring</li> </ul>
Water leaking out the lever area	<ul style="list-style-type: none"> <li>O-ring around actuator rod worn</li> </ul>	<ul style="list-style-type: none"> <li>Replace seat O-ring</li> </ul>

#### ⚠ WARNING

##### SKIN PUNCTURE HAZARD

**Do not allow spray to contact any part of the body or animals. Pumped liquids under high pressure can pierce skin and underlying tissue or can deflect debris leading to serious personal injury or death.**

1. Relieve all line pressure in the inlet line to the pump and discharge line from the pump before performing any maintenance on the gun.
2. When high-pressure gun is not in use, set safety trigger lock (safety latch) to avoid accidental high-pressure operation and personal injury or property damage.
3. Do not check for leaks with hand. Use a piece of cardboard to check for leaks.
4. Review cleaning procedures to minimize heavy back blasting.
5. Wear adequate safety equipment and clothing when operating a high-pressure sprayer. Never use high-pressure spray with bare feet or exposed skin, and always wear safety glasses.

#### ⚠ CAUTIONS AND WARNINGS

All high-pressure systems require a primary pressure regulating device (e.g. regulator, unloader) and a secondary pressure relief device (e.g. pop-off valve, relief valve). Failure to install such relief devices could result in personal injury or damage to pump or property. Cat Pumps does not assume any liability or responsibility for the operation of a customer's high-pressure system.

Read all CAUTIONS and WARNINGS before commencing service or operation of any high-pressure system. The CAUTIONS and WARNINGS are included in each Service Manual and with each Accessory Data sheet. CAUTIONS and WARNINGS can also be viewed online at [www.catpumps.com/dynamic-literature/cautions-and-warnings](http://www.catpumps.com/dynamic-literature/cautions-and-warnings) or can be requested directly from Cat Pumps.

#### WARRANTY

View the Limited Warranty online at [www.catpumps.com/literature/cat-pumps-limited-warranty](http://www.catpumps.com/literature/cat-pumps-limited-warranty)