

# DATA SHEET

## VERTICAL MULTISTAGE PUMP



**Stainless Steel  
Model:**

**810K3S6T3F**



### SPECIFICATIONS

#### Size

Suction	300# ANSI Raised Face 2"
Discharge	300# ANSI Raised Face 2"
HP	3 hp
RPM	3460 rpm

#### Liquid Handled

Type of Liquid	*Clean Water
Temperature Range	-22°–248° F (-30°–120° C)
Max. Working Pressure	230 psi (16 bar)

#### Materials

Impeller	AISI 304
Intermediate Casing	AISI 304
Bottom Casing	AISI 304
Casing Cover	AISI 304
Outer Casing	AISI 304
Shaft	AISI 304
Liner Ring	PPS/AISI 304
Motor Bracket	Cast Iron
Base	Die Cast Aluminum
Lower Pump Bearings	Tungsten Carbide
Mechanical Seal	Silicon Carbide/Carbon/FPM

#### Motor

Type	NEMA 145TC Frame, TEFC
Speed	60 Hz, 3460 rpm (2 Poles)
Three Phase	230/460V
Direction of Rotation	Clockwise When Viewed from Motor End

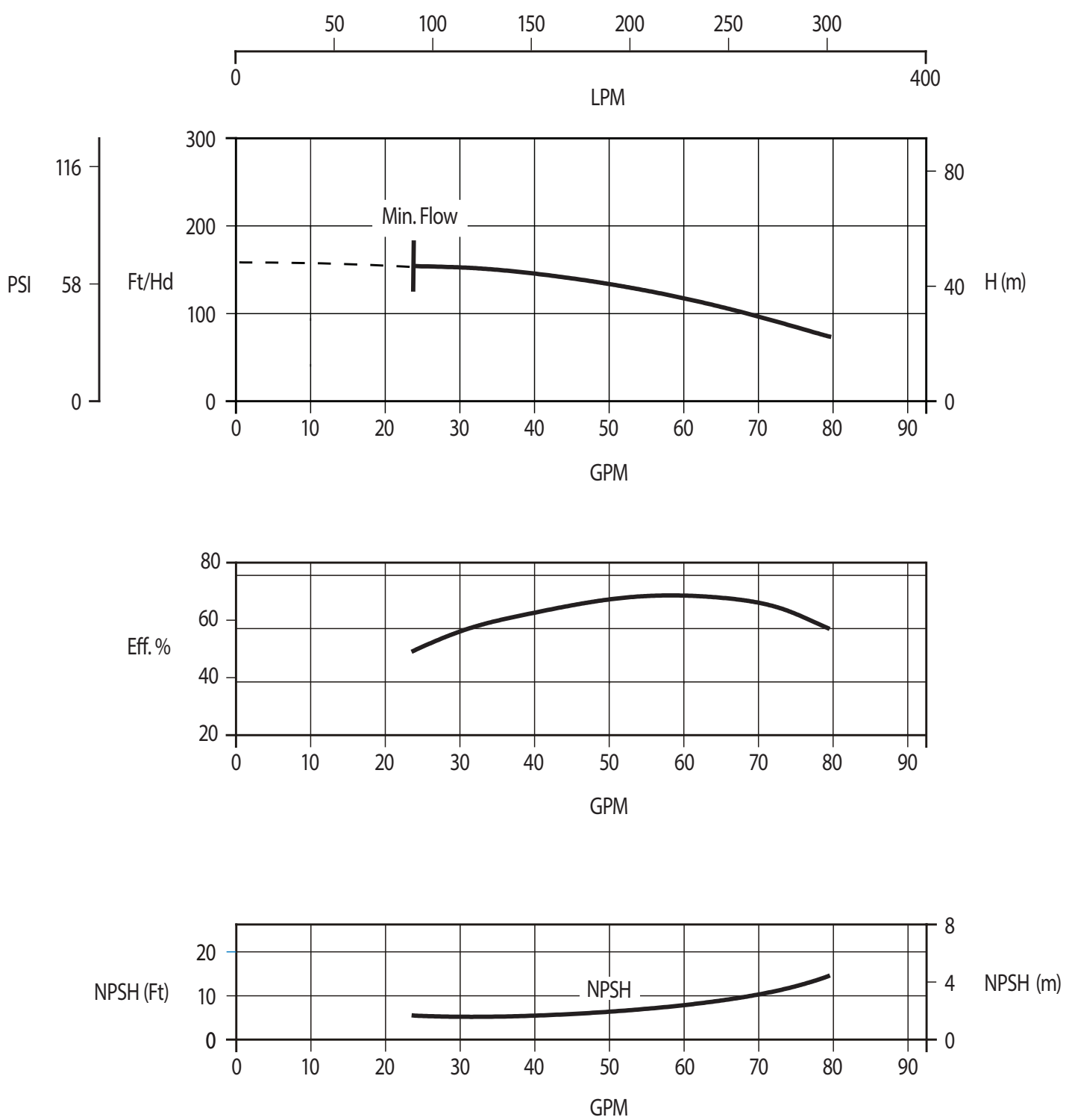
#### Weight

Pump	48.1 lbs
------	----------

\* For other clean liquids, consult Cat Pumps.

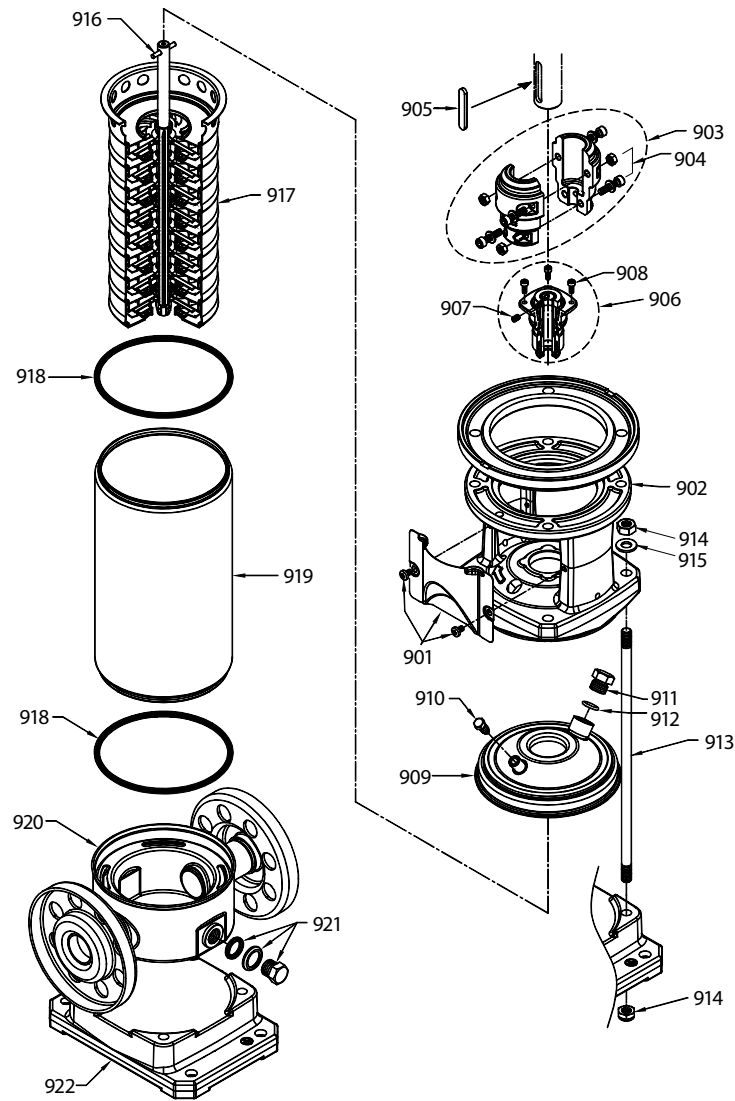
**Note: See PN 99SVM001 for complete operating instructions, installation and maintenance manual information.**

PERFORMANCE CURVE – 3450 RPM  
80 gpm, 150 Ft/Hd



Water Temperature: 68° F (20° C)

## EXPLODED VIEW



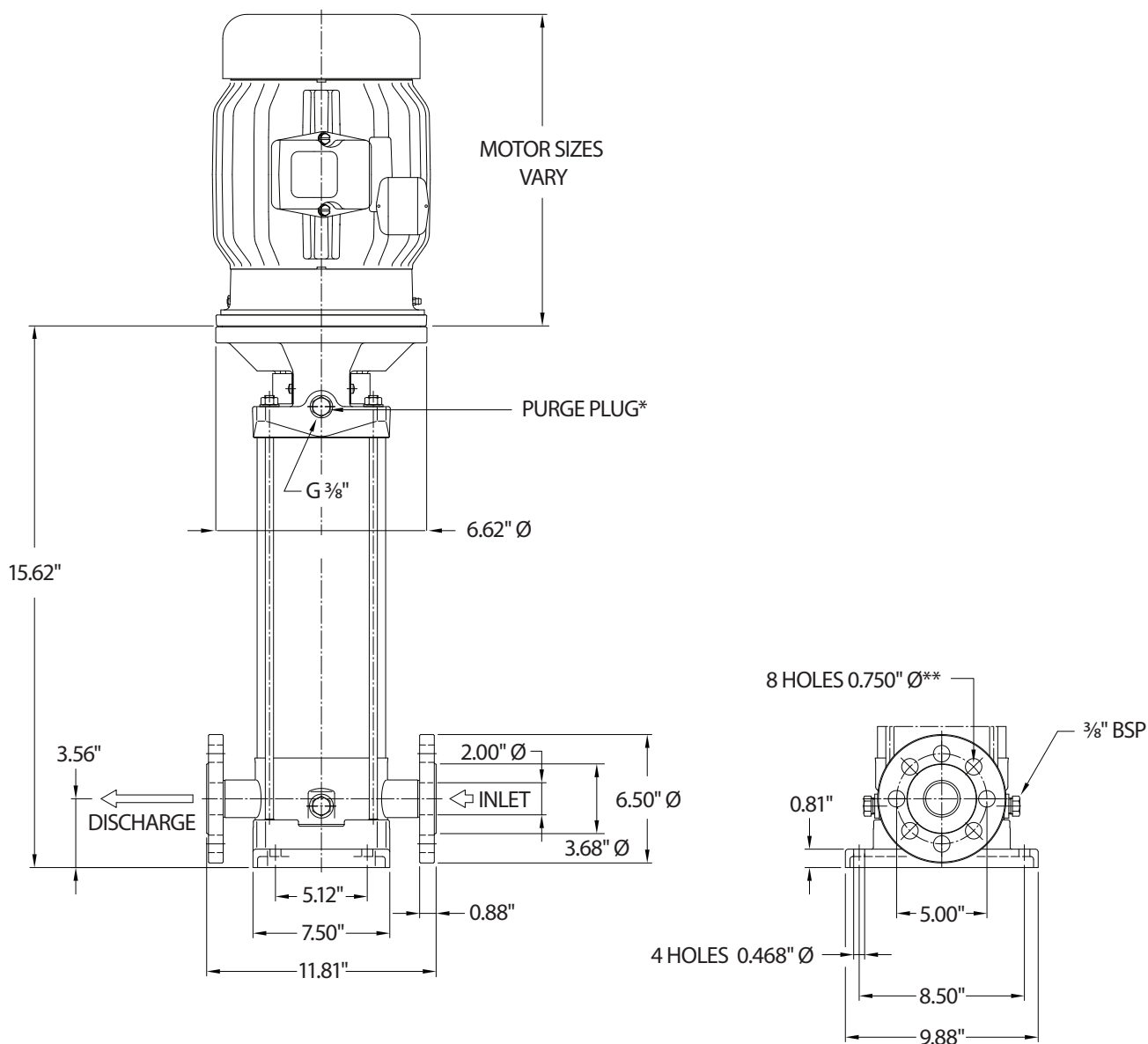
## PARTS LIST

ITEM	P/N	MATL	DESCRIPTION	QTY	ITEM	P/N	MATL	DESCRIPTION	QTY
901	—	S	Assembly, Coupler Guard	2	913	—	STZP	Rod, Tie	4
902	—	F	Bracket, Motor	1	914	—	STZP	Nut, Tie Rod	4
903	—	AL	Coupling (2-Piece)	1	915	—	STZP	Washer, Tie Rod	4
904	—	STL	Hardware, Coupling (M6)	4	916	—	STL	Pin, Shaft	1
905	—	S	Key, Adjuster	1	917	—	S	Assembly, Hydraulic	1
906	—	FSC	Seal, Mechanical	1	918	—	FPM	O-Ring, Outer Casing	2
907	—	STL	Screw, Set	1	919	—	S	Casing, Outer	1
908	—	STZP	Screw, Mechanical Seal Seat	4	920	—	S	Casing, Bottom	1
909	—	S	Cover, Casing	1	921	—	S	Assembly, Plug, Drain	2
910	—	S	Plug, Priming	1	922	—	AL	Base	1
911	—	S	Plug	1	923	—	—	Kit, Seal (Includes: 906, 918)	1
912	—	FPM	O-Ring, Plug	1	924	—	—	Kit, Hydraulic (Includes: 905, 906, 917, 918)	1

*Italics are optional items*

Material Codes (Not part of part number):

AL= Aluminum F= Cast Iron FPM= Fluorocarbon FSC= FPM with Silicon Carbide S= 304 Stainless Steel STL= Steel STZP= Steel/Zinc Plated



\* All air must be purged before operation to prevent seal damage.

\*\* Flange tightening torque = 26 ft-lbs

#### ⚠ CAUTIONS AND WARNINGS

All high-pressure systems require a primary pressure regulating device (e.g. regulator, unloader) and a secondary pressure relief device (e.g. pop-off valve, relief valve). Failure to install such relief devices could result in personal injury or damage to pump or property. Cat Pumps does not assume any liability or responsibility for the operation of a customer's high-pressure system. Read all CAUTIONS and WARNINGS before commencing service or operation of any high-pressure system. The CAUTIONS and WARNINGS are included in each Service Manual and with each Accessory Data sheet. CAUTIONS and WARNINGS can also be viewed online at [www.catpumps.com/dynamic-literature/cautions-and-warnings](http://www.catpumps.com/dynamic-literature/cautions-and-warnings) or can be requested directly from Cat Pumps.

#### WARRANTY

View the Limited Warranty online at [www.catpumps.com/literature/cat-pumps-limited-warranty](http://www.catpumps.com/literature/cat-pumps-limited-warranty)