

10,000 PSI PRODUCTS



Proven Pumping Solutions for 10,000 PSI Applications

Cat Pumps' 10,000 psi plunger pumps are engineered to deliver reliable, high-pressure performance across a wide range of demanding industrial applications. With three models available, this product line provides flexible flow options to match specific system requirements while maintaining consistent pressure capability up to 10,000 psi.

From lower-flow precision testing to higher-flow pressure systems, each pump is designed and manufactured to the same exacting standards that define Cat Pumps' reputation for durability and long service life. Proven designs, robust materials, and precision manufacturing ensure dependable operation under continuous-duty conditions.

Whether the application calls for compact performance or maximum flow at extreme pressure, Cat Pumps offers a 10,000 psi solution engineered to perform with confidence. Backed by global support and decades of high-pressure experience, these pumps are built to meet the demands of critical, high-intensity operations.

Features:

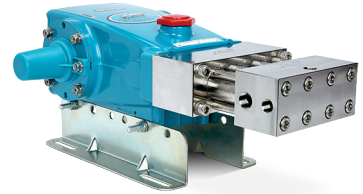
- Block-style stainless steel manifolds deliver high structural strength and corrosion resistance for demanding industrial applications.
- Tested and proven packing assemblies provide added stability at high pressure while extending seal life.
- Matched connecting rods and oversized bearings increase load capacity and significantly extend bearing life.
- Low unswept-volume designs maximize volumetric efficiency, reduce energy consumption, and deliver consistent flow.

Applications:

- Water Jet Cutting
- Hydrostatic Testing
- Chemical Injection
- High-Pressure Tooling
- Surface Prep/Tube Cleaning
- High-Pressure Washdown
- Heavy Equipment Cleaning
- Blow Off Preventer (BOP)
- Marine Barnacle Growth/ Paint Removal

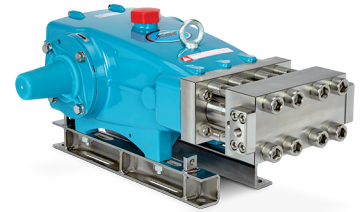
Model 1810 Triplex Positive Displacement Pump

SPECIFICATIONS	U.S. MEASURE	METRIC MEASURE
Flow	3.0 gpm	11.4 lpm
Pressure Range	100–10,000 psi	6.9–689 bar
RPM	1500	1500
Inlet Ports (2)	½" NPT(F)	½" NPT(F)
Discharge Ports (3)	¾" NPT(F)	¾" NPT(F)
Weight	60 lbs	27.2 kg
Dimensions	19.53 x 12.99 x 6.44"	496 x 330 x 164 mm



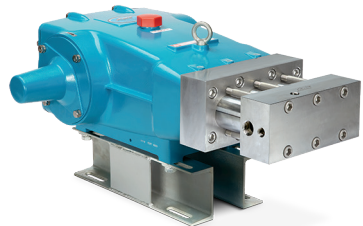
Model 3810 Triplex Positive Displacement Pump

SPECIFICATIONS	U.S. MEASURE	METRIC MEASURE
Flow	6 gpm	22.7 lpm
Pressure Range	100–10,000 psi	6.9–689 bar
RPM	870 rpm	870 rpm
Inlet Ports (2)	½" NPT(F)	½" NPT(F)
Discharge Ports (2)	¾" NPT(F)	¾" NPT(F)
Weight	119 lbs	54 kg
Dimensions	24.30 x 18.11 x 9.78"	617 x 460 x 248 mm



Model 6810 Triplex Positive Displacement Pump

SPECIFICATIONS	U.S. MEASURE	METRIC MEASURE
Flow	10 gpm	38 lpm
Pressure Range	100–10,000 psi	6.9–689 bar
RPM	600	600
Inlet Ports (2)	1" NPT(F)	1" NPT(F)
Discharge Ports (3)	½" NPT(F)	½" NPT(F)
Weight	376 lbs	170 kg
Dimensions	31.89 x 24.02 x 11.12"	810 x 610 x 282 mm



Matching High-Pressure Accessories

MODEL	MATERIAL	DESCRIPTION	PRESSURE
7720	SS	Pressure Regulator	2,000–10,000 psi (138–689 bar)
9970	S	Unloader Valve	1,160–11,600 psi (80–800 bar)
997587	SS	Pop-Off Valve	1,500–10,000 psi (103–689 bar)
9975	BB	Pop-Off Valve	2,900–14,500 psi (200–1,000 bar)
9921	SS	Rupture Disc	10,000 psi (689 bar)
9920	SS	Rupture Disc	15,000 psi (1,034 bar)
6032	SS	Pulsation Dampener	Up to 10,000 psi (689 bar)
701610	SS	Pulsation Dampener	Up to 10,000 psi (689 bar)
992641	S	Pressure-Compensating Shut-Off Gun	Up to 14,500 psi (1,000 bar)
6081	SS	Pressure Gauge	Up to 20,000 psi (1,379 bar)



Contact Cat Pumps for more information at info@catpumps.com or (763) 780-5440



CAT PUMPS

1681 – 94TH LANE N.E. MINNEAPOLIS, MN 55449-4324
PHONE (763) 780-5440 — FAX (763) 780-2958
info@catpumps.com | www.catpumps.com