

DATA SHEET

SELF-PROPELLED TANK CLEANING HEAD



Stainless Steel **39323** Without Nozzles
Model:



FEATURES

- Provides complete orbital coverage, ensuring thorough cleaning of all interior surfaces.
- Delivers high-impact cleaning performance by utilizing reduced water flow at high pressure.
- Automatically increases rotation speed with a higher flow rate.
- Operates effectively regardless of water temperature.
- Constructed from heavy-duty stainless steel, featuring durable FPM seals and O-rings.
- Equipped with a built-in 400 µm inlet filter that protects internal drive components.
- Designed to be compact and self-propelled, requiring no external power source.

SPECIFICATIONS

	U.S.	Metric
Flow Range	2.85–3.9 gpm	11–15 lpm
Pressure Range	435–2000 psi	30–138 bar
RPM Range	33–55 rpm	33–55 rpm
Temperature Range	32–140° F	0–60° C
Inlet Fitting	½" BSP(F)	½" BSP(F)
Nozzle Holder	M4	M4
Weight	4.48 lbs	2.03 kg
Dimensions	2.36 x 8"	60 x 203 mm

SELECTION

Only one Cat Pumps model 39323 cleaning head is available and is supplied without nozzles. Contact Cat Pumps Technical Support for nozzle sizing and selection assistance based on available flow and desired cleaning intensity.

INSTALLATION

Install two (2) M4 nozzles into the two (2) non-plugged nozzle holder holes. These nozzles need to be rated for systems operating pressure and flow. Next, position the cleaner head securely inside the tank or vessel to ensure complete 360° spray coverage. Then, connect the ½" BSP (F) inlet fitting to a high-pressure line that delivers the required flow and pressure. Finally, verify that all pressure-regulating and safety-relief devices are installed according to Cat Pumps' system recommendations.

OPERATION

The self-propelled tank cleaner head uses the energy of the pumped liquid to drive an internal turbine and planetary gearbox. As the flow passes through the turbine, the gearbox rotates and revolves the nozzles to deliver a complete orbital cleaning pattern. Rotation speed varies automatically with flow, providing consistent cleaning performance across a wide pressure range.

MAINTENANCE

Every 400 hours (~10,000 cycles), inspect and lubricate seals and O-rings using water-resistant silicone grease. Inspect all internal components for wear and replace as needed. Always perform maintenance with the system depressurized and serviced by qualified personnel.

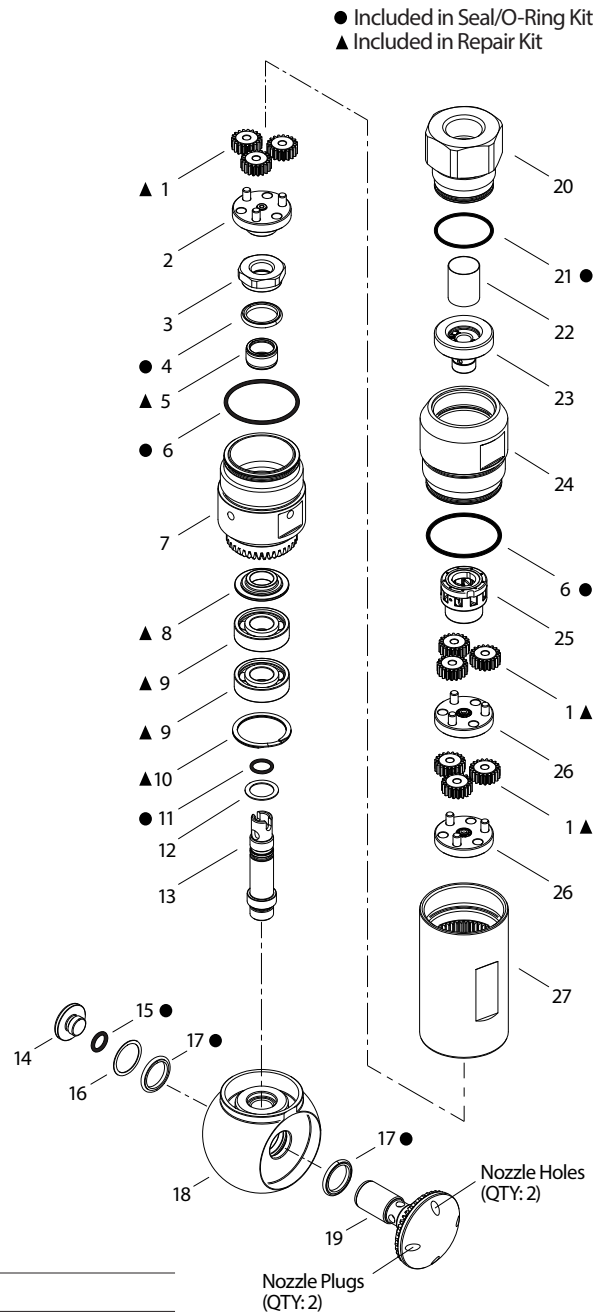
PARTS LIST

ITEM	P/N	MATL	KIT	DESCRIPTION	QTY
1	32148	BZ	▲	Gear, Planetary	9
2		S		Holder, Gear, Planetary (with 3 Pins)	1
3		S		Nut, Ring	1
4	FPM		●	Seal	1
5		S	▲	Bushing, Holding, Seal	1
6	FPM		●	O-Ring, Fixed Rest/Inlet Flange	2
7		S		Rest, Fixed	1
8		S	▲	Ring, Spacer	1
9		S	▲	Bearing, Ball	2
10		S	▲	Ring, Snap	1
11	FPM		●	O-Ring, Propeller Shaft	1
12		S		Ring, Shim	1
13		S		Shaft, Propeller	1
14		S		Pin (M10)	1
15	FPM		●	O-Ring, Pin	1
16		S		Ring, Shim	1
17	FPM		●	Seal, Stem	2
18		S		Frame, Spherical	1
19		S		Holder, Nozzle, Spherical	1
20		S		Coupler, Inlet	1
21	FPM		●	O-Ring, Inlet Coupler	1
22		S		Filter, Inlet	1
23		S		Pin, Injector	1
24		S		Flange, Inlet	1
25	32147	S		Turbine with Planetary Shaft	1
26		S		Holder, Gear, Planetary with 3 pins	2
27		S		Gear, Ring	1
28	32291	FPM	●	<i>Kit, Seal/O-Ring (Includes: 4, 6, 11, 15, 17, 21)</i>	1
29	—	—	▲	<i>Kit, Repair (Includes: 1, 5, 8, 9, 10)</i>	1

Italics are optional items.

Material Codes (Not Part of Part Number): BZ=Bronze FPM=Fluorocarbon S=303SS

EXPLODED VIEW



TROUBLESHOOTING

Problems	Probable Cause	Solution
No water	• Blockage in small orifices or nozzles	• Clear obstructions
Little or no pressure	• Low flow from pump, worn nozzles	• Increase flow from pump, replace nozzles

▲ WARNING

SKIN PUNCTURE HAZARD

Do not allow spray to contact any part of the body or animals. Pumped liquids under high pressure can pierce skin and underlying tissue or can deflect debris leading to serious personal injury or death.

1. Relieve all line pressure in the inlet line to the pump and discharge line from the pump before performing any maintenance on the gun.
2. When high-pressure gun is not in use, set safety trigger lock (safety latch) to avoid accidental high-pressure operation and personal injury or property damage.
3. Do not check for leaks with hand.
4. Review cleaning procedures to minimize heavy back blasting.
5. Wear adequate safety equipment and clothing when operating a high-pressure sprayer. Never use high-pressure spray with bare feet or exposed skin, and always wear safety glasses.

▲ CAUTIONS AND WARNINGS

All high-pressure systems require a primary pressure regulating device (e.g. regulator, unloader) and a secondary pressure relief device (e.g. pop-off valve, relief valve). Failure to install such relief devices could result in personal injury or damage to pump or property. Cat Pumps does not assume any liability or responsibility for the operation of a customer's high-pressure system.

Read all CAUTIONS and WARNINGS before commencing service or operation of any high-pressure system. The CAUTIONS and WARNINGS are included in each Service Manual and with each Accessory Data sheet. CAUTIONS and WARNINGS can also be viewed online at www.catpumps.com/dynamic-literature/cautions-and-warnings or can be requested directly from Cat Pumps.

WARRANTY

View the Limited Warranty online at www.catpumps.com/literature/cat-pumps-limited-warranty