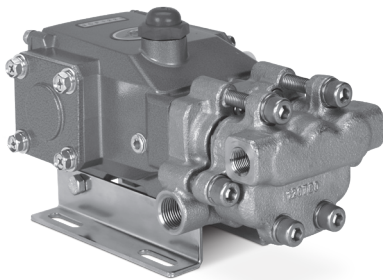


DATA SHEET

3CP PLUNGER PUMPS



Stainless Steel Model: **3CP1211CS**
Gearbox Model: **3CP1211G**



Model 3CP1211CS Shown
(Mounting rails sold separately)

FEATURES

- Triplex plunger design ensures high efficiency and low pulsation.
- 316 stainless steel wet-end.
- Direct-drive option offers a compact footprint for electric motors with a NEMA or IEC frame, or SAE hydraulic motor with a bell housing/flexible coupler assembly.
- Pump comes standard with NBR seals. Alternative seal materials are available for higher temperature or chemical compatibility.

COMMON

SPECIFICATIONS

	U.S.	Metric
Inlet Pressure Range	Flooded to 70 psi	Flooded to 4.8 bar
Max. Liquid Temperature (NBR)	160° F	71° C
Alternative seals available for higher temperatures up to 200° F		
Bore	0.708"	18 mm
Crankcase Capacity	12 oz	0.35 l
Inlet Ports (2)	1/2" NPT(F)	1/2" NPT(F)
Discharge Ports (2)	3/8" NPT(F)	3/8" NPT(F)
Shaft Diameter	0.650"	16.5mm
Pulley Mounting	Right Side	Right Side
Weight	14.84 lbs	6.7 kg
Dimensions	9.69 x 8.78 x 5.53"	246 x 223 x 136mm

SPECIFICATIONS

	U.S. Measure	Metric Measure
3CP1211CS Direct Drive		
Flow	5.0 gpm	19 lpm
Pressure Range	100–1700 psi	6.9–117 bar
Pump RPM*	1750 rpm	1750 rpm
Stroke	0.590"	15 mm

*Pump minimum is 100 RPM.

3CP1211G Gearbox

Flow	3.8 gpm	14.4 lpm
Pressure Range	100–1500 psi	6.9–103 bar
Engine RPM	3400 rpm	3400 rpm
Stroke	0.590"	15 mm

ALTERNATIVE SEAL CONFIGURATION

MATERIAL	SUFFIX CODE	MAXIMUM TEMPERATURE
NBR	—	160° F (71° C)
FPM	.0110	180° F (82° C)
EPDM	.0220	160° F (71° C)
FFKM	.0770	200° F (93° C)
HT	.3000	180° F (82° C)
STHT	.3400	190° F (88° C)

See **Tech Bulletin 002** for inlet conditions and RPM at high temperature.

$$\frac{\text{Rated gpm}}{\text{Rated rpm}} = \frac{\text{Desired gpm}}{\text{Desired rpm}}$$

$$\frac{\text{Desired gpm} \times \text{Desired rpm}}{1460} = \text{Hp (Electric Brake)}$$

$$\frac{\text{Motor Pulley OD}}{\text{Pump rpm}} = \frac{\text{Pump Pulley OD}}{\text{Motor rpm}}$$

Refer to pump **Service Manual** for repair procedure and additional technical information.

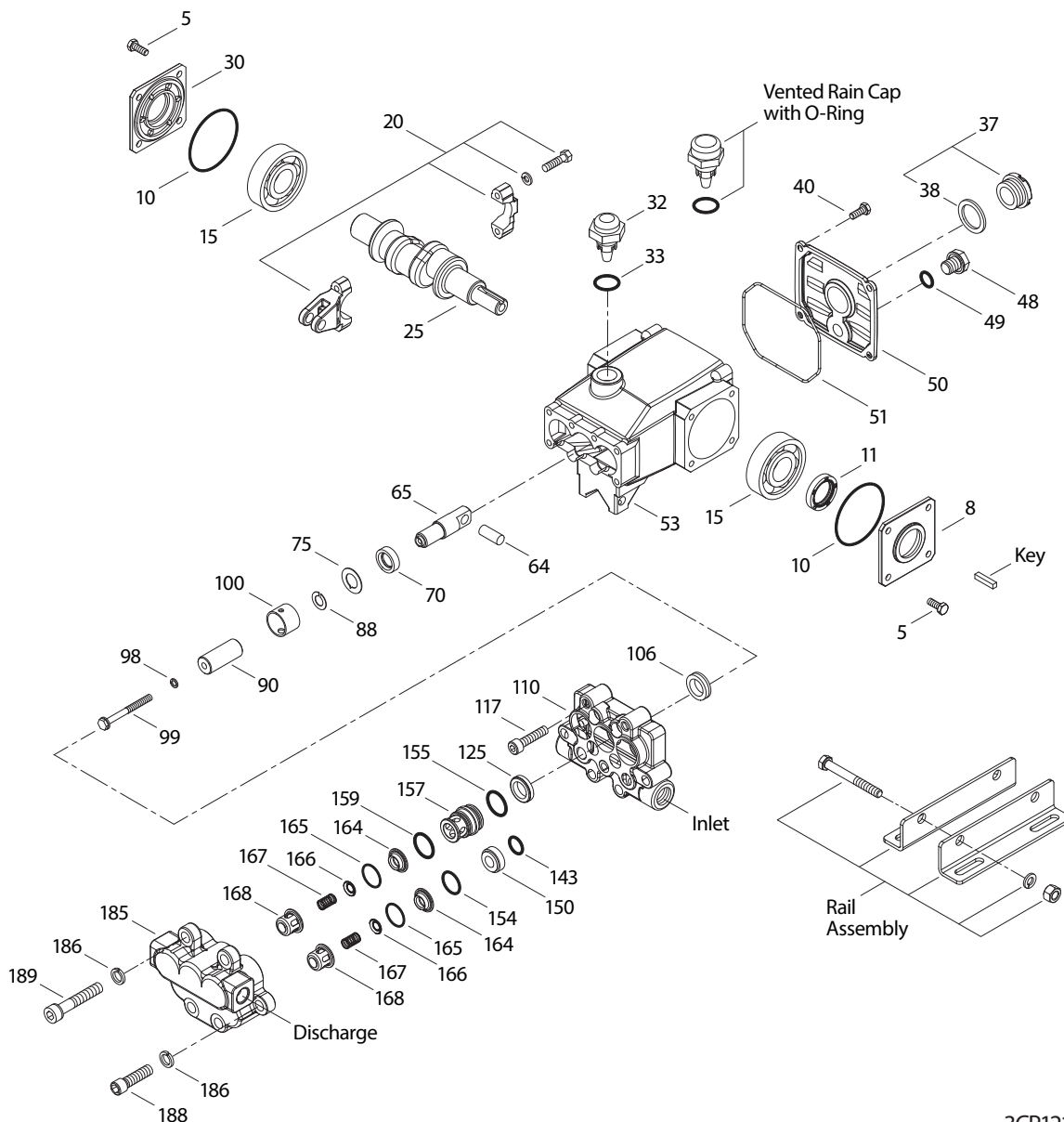
PARTS LIST

ITEM	PART NUMBER	DESCRIPTION	QTY
	3CP1211CS 3CP1211G	MATL	
5	92538	S Screw, HHC Sems (M6 x 16) (See Tech Bulletin 074)	8
8	46901	AL Cover, Bearing	1
10	14028	NBR O-Ring, Cover, Bearing	2
11	43222	NBR Seal, Oil, Crankshaft	1
15	14480	STL Bearing, Ball	2
20	48730	TNM Rod Connecting (See Tech Bulletin 074)	3
25	48805	FCM Crankshaft, Single-End (M15)	1
30	48259	AL Cover, Bearing, Blind	1
32	46798	RTP Cap, Oil Filler	1
33	14179	NBR O-Ring, Oil Filler Cap	1
37	92241	PC Gauge, Oil, Bubble with Gasket (See Tech Bulletin 074)	1
38	44428	NBR Gasket, Flat, Oil Gauge	1
40	92538	S Screw, HHC Sems (M6 x 16) (See Tech Bulletin 074)	4
48	25625	STCP Plug, Drain (1/4" x 19 BSP)	1
49	23170	NBR O-Ring, Drain Plug	1
50	46939	AL Cover, Rear	1
51	14041	NBR O-Ring, Rear, Cover	1
53	48644	AL Crankcase	1
64	46615	CM Pin, Crosshead	3
65	48807	BBNP Rod, Plunger	3
70	46839	NBR Seal, Oil, Crankcase	3
75	48809	S Slinger, Barrier, Flat	3
88	45697	S Washer, Keyhole (M18 x M10)	3
90	46976	CC Plunger (M18 x 43)	3
97	76729	SS <i>Washer, Flat (Not shown, use with 76730)</i>	3
98	46730	NBR Washer, Seal	3
99	† 48201	SS Retainer, Plunger (See Tech Bulletin 074)	3
100	46541	PVDF Retainer, Seal	3
106	44053	NBR Seal, Low-Pressure with SS-Spring	3
110	48556	SS Manifold, Inlet	1
117	119034	S Screw, HSH (M8 x 35) (See Tech Bulletin 074)	4
125	44652	SNG Seal, High-Pressure with SS-Support	3
143	17547	NBR O-Ring, Adapter, Inlet Valve, Rear	3
150	44060	SS Adapter, Inlet Valve	3
154	43893	NBR O-Ring, Adapter, Inlet Valve, Front	3
155	26089	NBR O-Ring, Adapter, Discharge Valve, Rear	3
157	48810	SS Adapter, Discharge Valve	3
159	26089	NBR O-Ring, Adapter, Discharge Valve, Front	3
164	44058	SS Seat	6
165	44001	NBR O-Ring, Seat	6
166	543669	SS Valve	6
167	44056	SS Spring	6
168	44055	SS Retainer, Spring	6
185	48558	SS Manifold, Discharge	1
186	15847	S Lockwasher (M10)	6
188	87950	S Screw, HSH (M10 x 35) (See Tech Bulletin 074)	2
189	87952	S Screw, HSH (M10 x 55) (See Tech Bulletin 074)	4
500	8075	— <i>Gearbox (See Individual Data Sheet) (Model 3CP1211G)</i>	1

Italics are optional items. † Production parts are different than repair parts. R Components comply with RoHS Directive.

For additional technical information see www.catpumps.com/literature/tech-bulletins MATERIAL CODES (Not Part of Part Number): AL=Aluminum BBNP=Brass/Nickel Plated CC=Ceramic CM=Chrome-moly EPDM=Ethylene Propylene Diene Monomer FCM=Forged Chrome-moly FFKM=Perfluoroelastomer FPM=Fluorocarbon HS=High Strength HT=High-Temp (EPDM Alternative) NBR=Medium Nitrile (Buna-N) PC=Poly Carbonate PTFE=Pure Polytetrafluoroethylene PVDF=Polyvinylidene Fluoride RTP=Reinforced Composite S=304SS SNG=Special Blend (Buna) SS=316SS ST2=Special PTFE 2 STL=Steel STHT=Special PTFE High Temp STCP=Steel/Chrome Plated STZP=Steel/Zinc Plated TNM=Special High Strength

EXPLODED VIEW



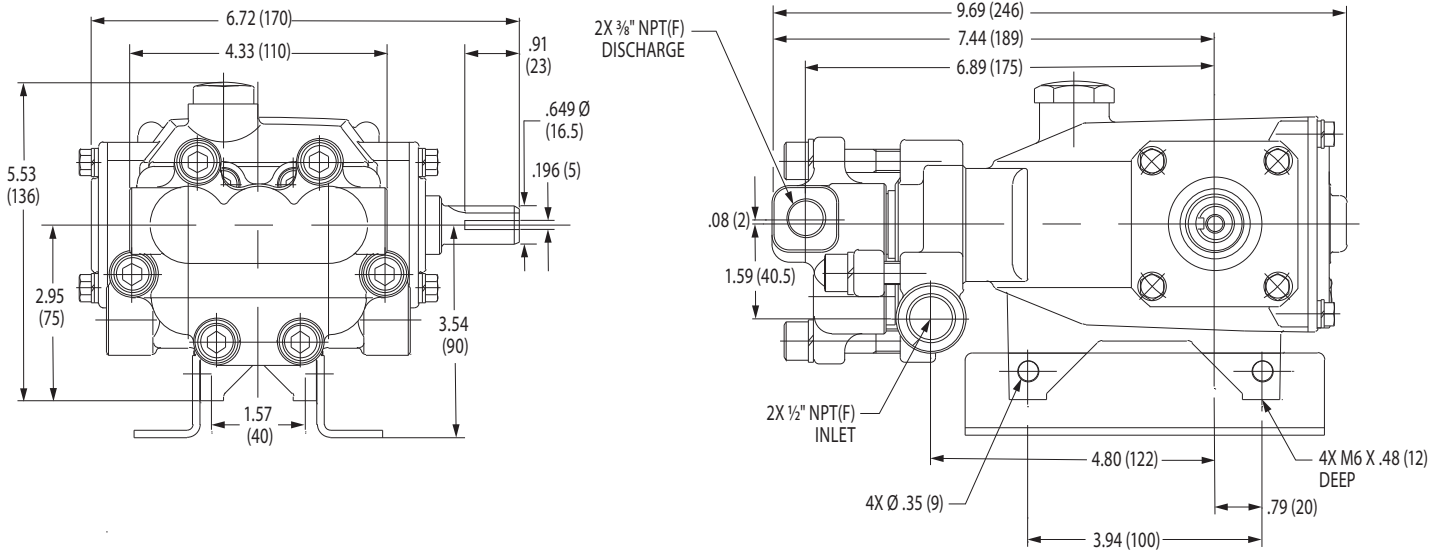
Models
3CP1211CS, 3CP1211G
April 2026

OPTIONAL PARTS AND ACCESSORIES

PART	DESCRIPTION	QTY
30047	Key (M5 x 5 x 24)	1
30612	Assembly, Rail (Belt Drive)	1
32603	Pulley, Assembly (99AK51H, 30047, 30943) (Not Shown)	1
127409	Cap, Vented with O-Ring (Rain Cap)	1
34334	Kit, Oil Drain (3/8" x 24) (Not Shown)	1

SERVICE PARTS

PART	DESCRIPTION	QTY
33985	Kit, Seal – Standard NBR	1
30982	Kit, Valve – Standard NBR	1
6107	Oil, Bottle (21 oz) (Fill to Specified Crankcase Capacity Prior to Start-up)	1
6124	Gasket, Liquid (3 oz)	1
6139	Lubricant, Anti-Seize (8 oz) (See Tech Bulletin 095)	1
30696	Reverse Pliers (Not Shown)	1
816719	Head, Complete with NBR Seals and O-Rings	1



SEAL KITS

One (1) seal kit required per pump

PUMP MODELS	NBR (STD)	FPM (.0110)	EPDM (.0220) ◆	FFKM (.0770)	HT (.3000)	STHT (.3400)
3CP1211CS, 3CP1211G	33985	33309	33944*	76985*	76136	76167

ITEM (Included in Seal Kits)							DESCRIPTION	QTY
97	—	—	—	76729	—	—	Washer, Flat	3
98	46730	48394	48432	76730	46730	46730	Washer, Seal	3
106	44053	44926	46651	76243	44053	76243	Seal, Low-Pressure with SS-Spring	3
125	44652	44925	46652	46652	46652	46652	Seal, High-Pressure with SS-Support	3
143	17547	11685	46648	703308	17547	17547	O-Ring, Adapter, Inlet Valve, Rear	3
154	43893	44927	46649	703307	43893	43893	O-Ring, Adapter, Inlet Valve, Front	3
155	26089	11377	46647	703244	26089	26089	O-Ring, Adapter, Discharge Valve, Rear	3
159	26089	11377	46647	703244	26089	26089	O-Ring, Adapter, Discharge Valve, Front	3

* Review material codes for individual items (HT, SNG, ST2 may be used as alternative)

◆ Silicone oil/grease required

VALVE KITS

One (1) valve kits required per pump

PUMP MODELS	NBR (STD)	FPM (.0110)	EPDM (.0220) ◆	FFKM (.0770)	HT (.3000)	STHT (.3400)
3CP1211CS, 3CP1211G	30982	31216	31217	76690	30982	30982

ITEM (Included in Valve Kits)							DESCRIPTION	QTY
143	17547	11685	46648	703308	17547	17547	O-Ring, Adapter, Inlet Valve, Rear	3
154	43893	44927	46649	703307	43893	43893	O-Ring, Adapter, Inlet Valve, Front	3
159	26089	11377	46647	703244	26089	26089	O-Ring, Adapter, Discharge Valve, Front	3
164	44058	44058	44058	44058	44058	44058	Seat	6
165	44001	44928	46650	703309	44001	44001	O-Ring, Seat	6
166	543669	543669	543669	543669	543669	543669	Valve	6
167	44056	44056	44056	44056	44056	44056	Spring	6
168	44055	44055	44055	44055	44055	44055	Retainer, Spring	6

◆ Silicone oil/grease required

⚠ CAUTIONS AND WARNINGS

All high-pressure systems require a primary pressure regulating device (e.g. regulator, unloader) and a secondary pressure relief device (e.g. pop-off valve, relief valve). Failure to install such relief devices could result in personal injury or damage to pump or property. Cat Pumps does not assume any liability or responsibility for the operation of a customer's high-pressure system. Read all CAUTIONS and WARNINGS before commencing service or operation of any high-pressure system. The CAUTIONS and WARNINGS are included in each Service Manual and with each Accessory Data sheet. CAUTIONS and WARNINGS can also be viewed online at www.catpumps.com/dynamic-literature/cautions-and-warnings or can be requested directly from Cat Pumps.

WARRANTY

View the Limited Warranty online at www.catpumps.com/literature/cat-pumps-limited-warranty