

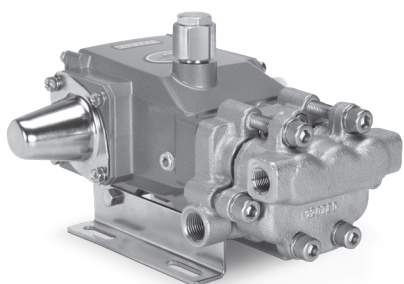
# DATA SHEET

## 3CP PLUNGER PUMPS



The Pumps with Nine Lives

**Stainless Steel Models:** **3CP1221.44101**  
**3CP1231.44101**  
**3CP1241.44101**



Model 3CP1221.44101 Shown  
 (Mounting rails and shaft protector sold separately)

### FEATURES

- Field tested, high-pressure triplex pump configured for high-temperature TEG (triethylene glycol) applications up to 240° F/115° C. May be used in other high-temperature applications with liquids possessing adequate lubrication properties. Contact Cat Pumps for more information.
- Positive displacement technology delivers optimum energy efficiency.
- TEG\* pump configuration option is designed to withstand high temperatures and demanding continuous-duty environments:
  - Elastomers and O-ring materials made from heat-resistant FPM material.
  - Stainless steel vented oil filler cap assembly and aluminum seal retainers resist melting and misshaping.
  - Stainless steel oil sight gauge with aluminum adapter holds up against higher-temperature drive-end operation.
  - Special PTFE-blended V-packings and low-pressure seals increase durability and longevity with high-temperature fluids.

\* TEG pump configuration is denoted by adding ".44101" to the end of the pump model.

### COMMON

SPECIFICATIONS	U.S.	Metric
Inlet Pressure Range	Flooded to 70 psi	Flooded to 4.9 bar
Maximum Liquid Temperature	240° F	115° C
Bore	0.709"	18 mm
Crankcase Capacity	10 oz	0.31 l
Inlet Ports (2)	½" NPT(F)	½" NPT(F)
Discharge Ports (2)	⅜" NPT(F)	⅜" NPT(F)
Shaft Diameter	0.650"	16.5mm
Pulley Mounting	Either Side	Either Side
Weight	14.84 lbs	6.7 kg
Dimensions	9.91 x 8.78 x 6.75"	252 x 223 x 171 mm

### SPECIFICATIONS

	U.S. Measure	Metric Measure
<b>3CP1221.44101</b>		
Flow	4.2 gpm	16 lpm
Pressure Range	100–2000 psi	6.9–138 bar
Pump RPM	1725 rpm	1725 rpm
Stroke	0.500"	12.7 mm
<b>3CP1231.44101</b>		
Flow	2.3 gpm	8.7 lpm
Pressure Range	100–2000 psi	6.9–138 bar
Pump RPM	1725 rpm	1725 rpm
Stroke	0.287"	7.3 mm
<b>3CP1241.44101</b>		
Flow	3.6 gpm	13.6 lpm
Pressure Range	100–2000 psi	6.9–138 bar
Pump RPM	1725 rpm	1725 rpm
Stroke	0.433"	11 mm

### ELECTRIC HORSEPOWER REQUIREMENTS

MODELS	FLOW		PRESSURE				PUMP RPM
	GPM	LPM	PSI		BAR		
			1200	85	1500	105	
Horsepower							
3CP1221.44101	4.2	16	35 hp		4.3 hp		1725
	3.5	13.2	2.9 hp		3.6 hp		1450
	3.0	11.4	2.5 hp		3.1 hp		1313
3CP1231.44101	2.3	8.7	1.9 hp		2.4 hp		1725
3CP1241.44101	3.6	13.6	3.0 hp		3.7 hp		1725

$$\text{DETERMINING THE PUMP RPM} \quad \frac{\text{Rated gpm}}{\text{Rated rpm}} = \frac{\text{Desired gpm}}{\text{Desired rpm}}$$

$$\text{DETERMINING THE REQUIRED HP} \quad \frac{\text{hp (Electric Brake)}}{1460} = \frac{\text{gpm} \times \text{psi}}{1460}$$

$$\text{DETERMINING MOTOR PULLEY SIZE} \quad \frac{\text{Motor Pulley OD}}{\text{Pump rpm}} = \frac{\text{Pump Pulley OD}}{\text{Motor rpm}}$$

Refer to pump **Service Manual** for repair procedure and additional technical information.

# PARTS LIST

ITEM	PART NUMBER		DESCRIPTION	QTY
5	92538	S	Screw, HHC Sems (M6 x 16) (See Tech Bulletin 074)	8
8	46901	AL	Cover, Bearing	2
10	76028	FPM	O-Ring, Cover, Bearing	2
11	76236	FPM	Seal, Oil, Crankshaft	2
15	14480	STL	Bearing, Ball	2
20	48730	TNM	Rod, Connecting	3
25	<b>46927</b>	FCM	Crankshaft, Dual-End (Model 3CP1221.44101 [M12.7])	1
	<b>46994</b>	FCM	Crankshaft, Dual-End (Model 3CP1231.44101 [M7.3])	1
	<b>46991</b>	FCM	Crankshaft, Dual-End (Model 3CP1241.44101 [M11])	1
31	76142	AL	Adapter, Breather	1
32	76797	BB	Cap, Vented	1
33	15855	FPM	O-Ring, Vented Oil Cap	1
36	76792	SS	Gauge, Sight (½" NPT[M])	1
37	76791	AL	Adapter, Sight	1
38	44428	NBR	Gasket, Flat, Adapter	1
40	92538	S	Screw, HHC Sems (M6 x 16) (See Tech Bulletin 074)	4
48	25625	STCP	Plug, Drain (¼" x 19 BSP)	1
49	30322	FPM	O-Ring, Drain Plug	1
50	46939	AL	Cover, Rear	1
51	76241	FPM	O-Ring, Cover, Rear	1
53	48644	AL	Crankcase	1
64	46615	CM	Pin, Crosshead	3
65	48459	BBNP	Rod, Plunger	3
70	76739	FPM	Seal, Oil, Crankcase	3
75	43900	S	Slinger, Barrier	3
88	45697	S	Washer, Keyhole (M18 x M10)	3
90	46976	CC	Plunger (M18 x 43)	3
98	48394	FPM	Washer, Seal	3
99	48201	SS	Retainer, Plunger (See Tech Bulletin 074)	3
100	76541	AL	Retainer, Seal	3
106	76243	ST2	Seal, Low-Pressure with S-Spring	3
110	48556	SS	Manifold, Inlet	1
117	119034	S	Screw, HSH (M8 x 35)	4
125	76052	ST4	Seal, High-Pressure with S-Support	3
143	11685	FPM	O-Ring, Adapter, Inlet Valve, Rear	3
150	44060	SS	Adapter, Inlet Valve	3
154	44927	FPM	O-Ring, Adapter, Inlet Valve, Front	3
155	11377	FPM	O-Ring, Adapter, Discharge Valve, Rear	3
157	44059	SS	Adapter, Discharge Valve	3
159	11377	FPM	O-Ring, Adapter, Discharge Valve, Front	3
164	44058	SS	Seat	6
165	44928	FPM	O-Ring, Seat	6
166	543669	SS	Valve	6
167	44056	SS	Spring	6
168	44055	SS	Retainer, Spring	6
185	48558	SS	Manifold, Discharge	1
186	15847	S	Lockwasher (M10)	6
188	87950	S	Screw, HSH (M10 x 35) (See Tech Bulletin 074)	2
189	87952	S	Screw, HSH (M10 x 55) (See Tech Bulletin 074)	4

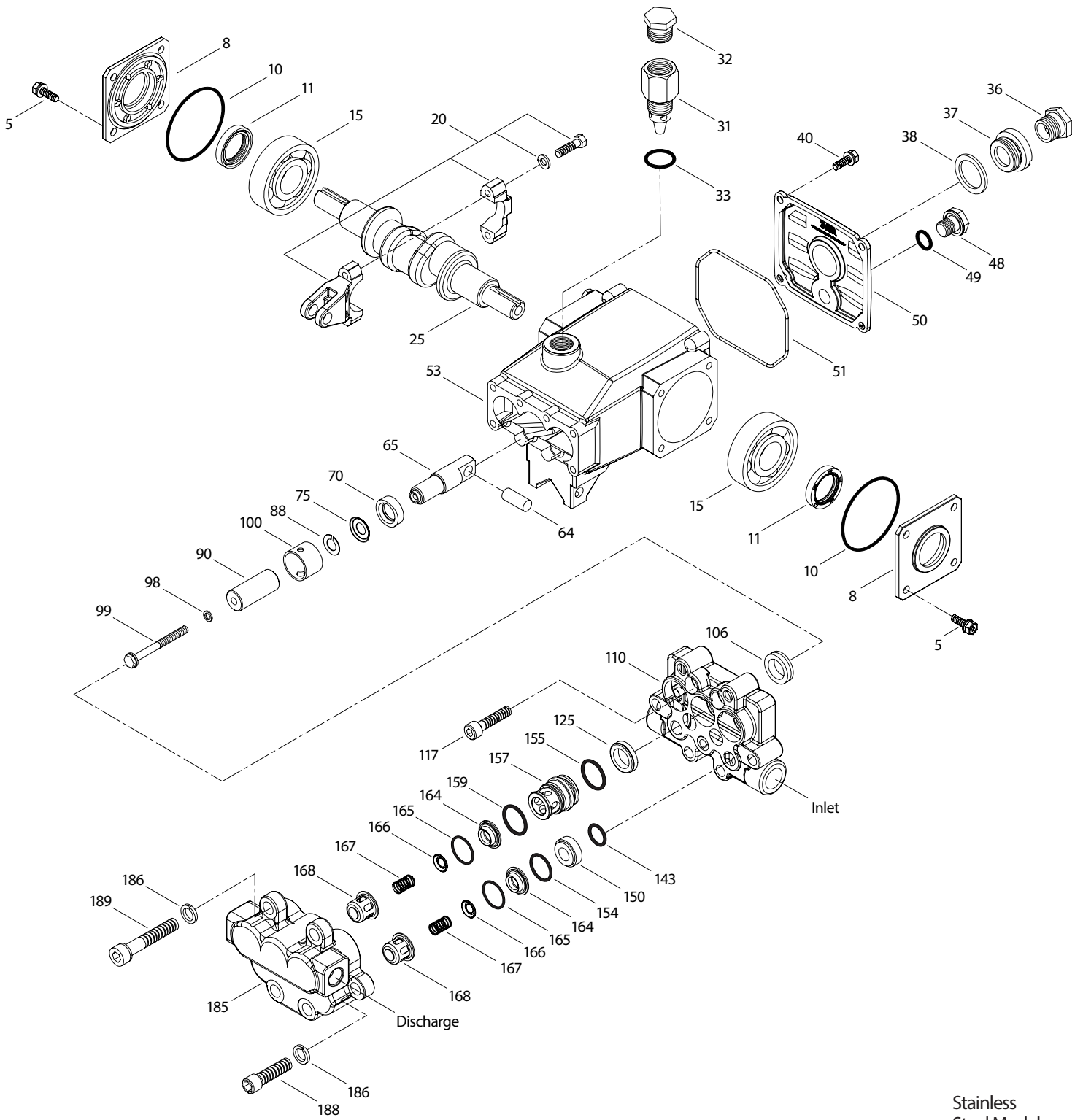
**Bold face part numbers are unique to a particular pump model.**

For additional technical information see [www.catpumps.com/literature/tech-bulletins](http://www.catpumps.com/literature/tech-bulletins).

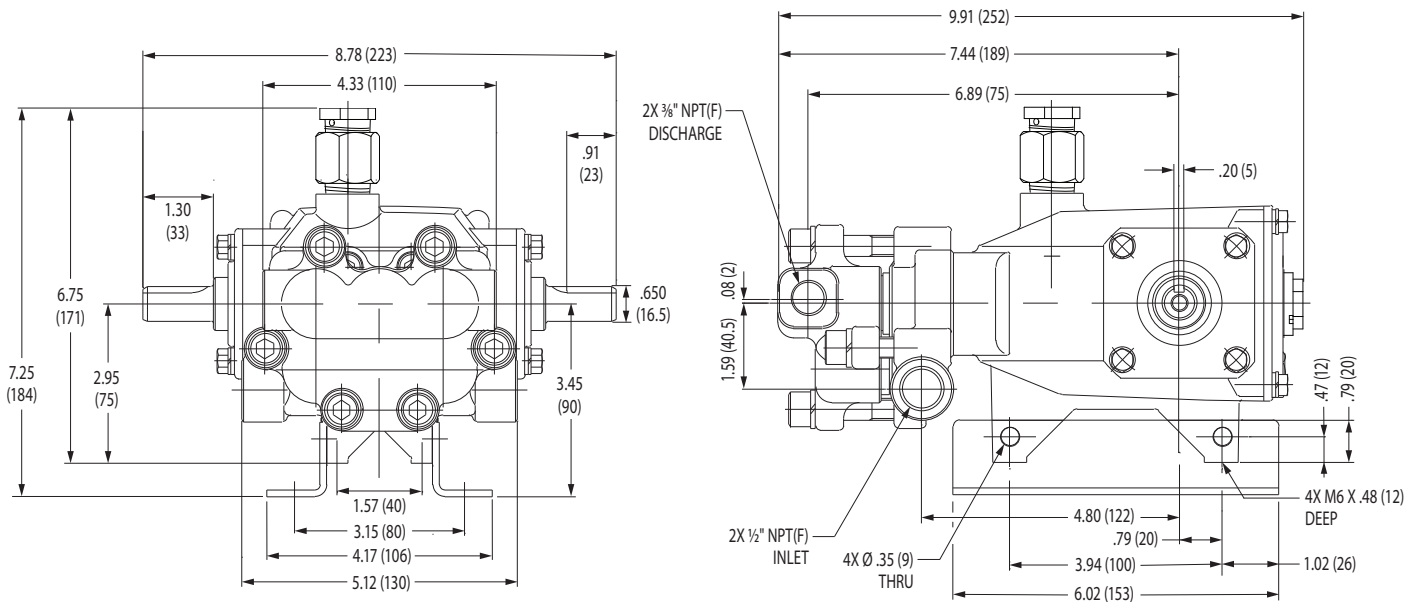
MATERIAL CODES (Not Part of Part Number): AL=Aluminum BB=Brass BBNP=Brass/Nickel Plated CC=Ceramic CM=Chrome-moly  
FCM=Forged Chrome-Moly FPM=Fluorocarbon NBR=Medium Nitrile (Buna-N) S=304SS SS=316SS STCP=Steel/Chrome Plated  
STL=Steel TNM=Special High Strength

**Repair Kits and Parts, Optional Parts and Accessories listed on page 4.**

# EXPLODED VIEW

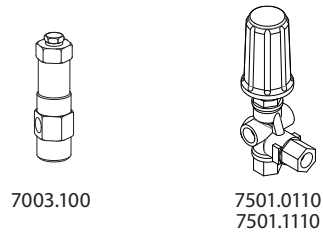


Stainless  
Steel Models:  
3CP1221.44101  
3CP1231.44101  
3CP1241.44101  
April 2026



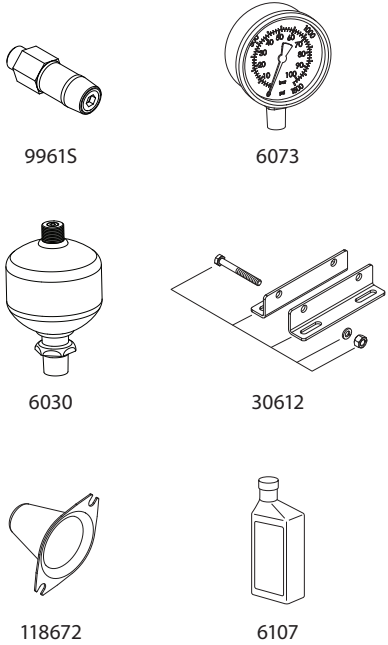
### REPAIR KITS AND PARTS

PART NUMBER	DESCRIPTION	QTY
76096	Kit, Seal (Includes Items: 98, 106, 125, 143, 154, 155, 159)	1
31216	Kit, Valve (Includes Items: 143, 154, 159, 164, 165, 166, 167, 168)	1
6107	Oil, Bottle (21 oz)	1
6139	Lubricant, Antiseize (8 oz)	1
30047	Key (M5 x 5 x 24)	1



### OPTIONAL PARTS AND ACCESSORIES

PART NUMBER	DESCRIPTION	QTY
7003.100	Regulator (Primary Pressure Control)	1
7501.0110	Unloader (Primary Pressure Control)	1
7501.1110	Valve, Relief (Secondary Pressure Control)	1
9961S	Valve, Pop-Off (Secondary Pressure Control)	1
6073	Gauge, Pressure	1
6030	Dampener, Pulsation	1
30612	Assembly, Rail	1
118672	Protector, Shaft	1
76334	Kit, Oil Indicator (3/8" x 24") See Individual Data Sheet (Not Shown)	1
34334	Kit, Oil Drain (3/8" x 24") See Individual Data Sheet (Not Shown)	1
30696	Reverse Pliers (Not Shown)	1
44050	Sight Gauge Removal Tool (Not Shown)	1



#### ⚠ CAUTIONS AND WARNINGS

All high-pressure systems require a primary pressure regulating device (e.g. regulator, unloader) and a secondary pressure relief device (e.g. pop-off valve, relief valve). Failure to install such relief devices could result in personal injury or damage to pump or property. Cat Pumps does not assume any liability or responsibility for the operation of a customer's high-pressure system. Read all CAUTIONS and WARNINGS before commencing service or operation of any high-pressure system. The CAUTIONS and WARNINGS are included in each Service Manual and with each Accessory Data sheet. CAUTIONS and WARNINGS can also be viewed online at [www.catpumps.com/dynamic-literature/cautions-and-warnings](http://www.catpumps.com/dynamic-literature/cautions-and-warnings) or can be requested directly from Cat Pumps.

#### WARRANTY

View the Limited Warranty online at [www.catpumps.com/literature/cat-pumps-limited-warranty](http://www.catpumps.com/literature/cat-pumps-limited-warranty)