

# DATA SHEET

## 3K HYDRAULIC CENTRIFUGAL PUMPS



**Stainless Steel  
Models:**

**3K121HYD, 3K131HYD, 3K191HYD**



Model 3K121HYD Shown

### FEATURES

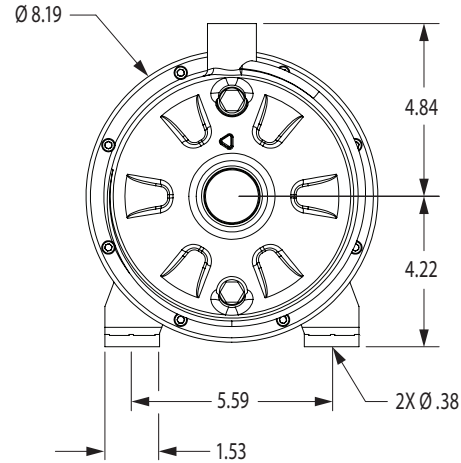
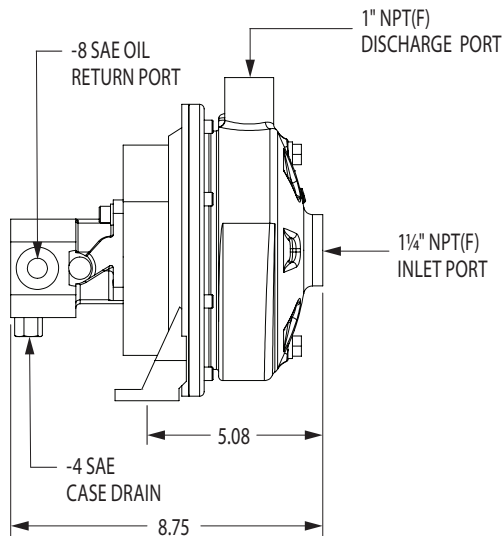
- A compact, close-coupled hydraulic motorized package provides a convenient installation, driven by a standard 4F17 4-bolt hydraulic motor.
- 304 stainless steel liquid-end construction offers corrosion resistance and extends operating life compared to typical cast-iron models.
- Unique bulge-formed components eliminate harsh radii and welds, providing greater efficiency and durability.
- The back pullout design allows easy repair of the impeller and seal.

SPECIFICATIONS	MODEL	U.S. Measure	Metric Measure
Max. Pump Flow	3K121HYD	38 gpm	144 l/m
	3K131HYD	38 gpm	144 l/m
	3K191HYD	90 gpm	340 l/m
Max. Pump Pressure	3K121HYD	45 psi	3.1 bar
	3K131HYD	62 psi	4.3 bar
	3K191HYD	54 psi	3.7 bar
Weight	3K121HYD	18.8 lbs	8.5 kg
	3K131HYD	19.0 lbs	8.6 kg
	3K191HYD	19.0 lbs	8.6 kg

### COMMON

SPECIFICATIONS	U.S. Measure	Metric Measure
Pump RPM	3450 rpm	3450 rpm
Pump Inlet Port	1¼" NPT(F)	1¼" NPT(F)
Pump Discharge Port	1" NPT(F)	1" NPT(F)
Hydraulic Flow Required	3 gpm	11.4 l/m
Hydraulic Pressure Required	700 psi	48 bar
Motor Inlet Port	-8 SAE	-8 SAE
Motor Discharge Port	-8 SAE	-8 SAE
Motor Case Drain Port	-4 SAE	-4 SAE
Dimensions	8.75 x 8.19 x 9.06"	222 x 208 x 230 mm

## DIMENSIONAL

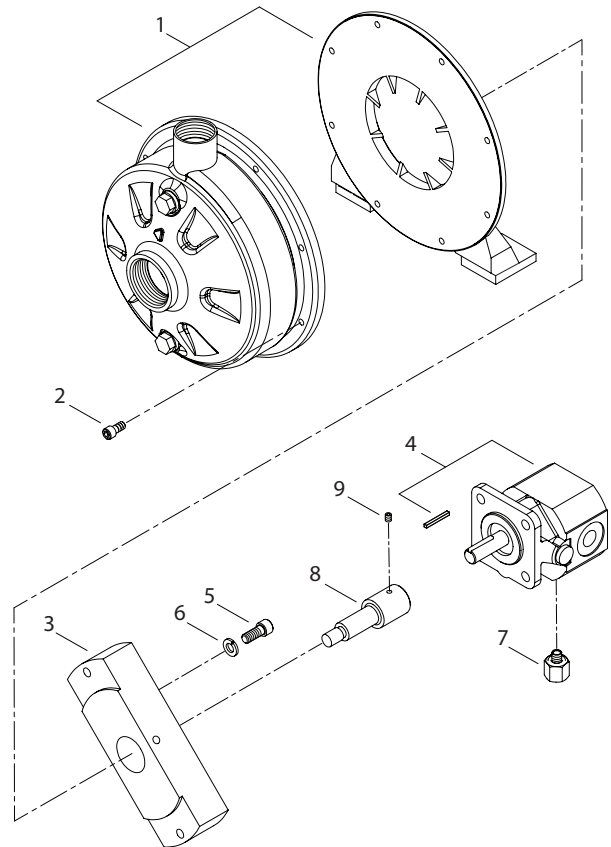


## PARTS LIST

ITEM	P/N	MATL	DESCRIPTION	QTY
1	3K121	S	Centrifugal Pump with NCC Shaft Seal, Bracket	1
2	NA	S	Hex, Socket Head Screws (M6 x 16)	8
3	991951	S	Adapter, Mount	1
4	991900	S	Motor, Hydraulic, 3.2CC, Shaft (1/2") with Key	1
5	992009	S	Screw, HSH (5/16" - 18 x 3/4")	2
6	30920	S	Lockwasher (5/16")	2
7	32295	S	Adapter (-2 SAE Male x -4 SAE Female)	1
8	991958	S	Adapter, Shaft	1
9	899082	S	Screw, Set (10 - 32 x 1/4")	2

R Components comply with RoHS Directive.  
 MATERIAL CODES (Not Part of Part Number): AL= Aluminum F= Cast Iron S= 304SS  
 STL= Steel STZP= Steel/Zinc Plated

## EXPLODED VIEW



### ⚠ CAUTIONS AND WARNINGS

All high-pressure systems require a primary pressure regulating device (e.g. regulator, unloader) and a secondary pressure relief device (e.g. pop-off valve, relief valve). Failure to install such relief devices could result in personal injury or damage to pump or property. Cat Pumps does not assume any liability or responsibility for the operation of a customer's high-pressure system. Read all CAUTIONS and WARNINGS before commencing service or operation of any high-pressure system. The CAUTIONS and WARNINGS are included in each Service Manual and with each Accessory Data sheet. CAUTIONS and WARNINGS can also be viewed online at [www.catpumps.com/dynamic-literature/cautions-and-warnings](http://www.catpumps.com/dynamic-literature/cautions-and-warnings) or can be requested directly from Cat Pumps.

### WARRANTY

View the Limited Warranty online at [www.catpumps.com/literature/cat-pumps-limited-warranty](http://www.catpumps.com/literature/cat-pumps-limited-warranty)