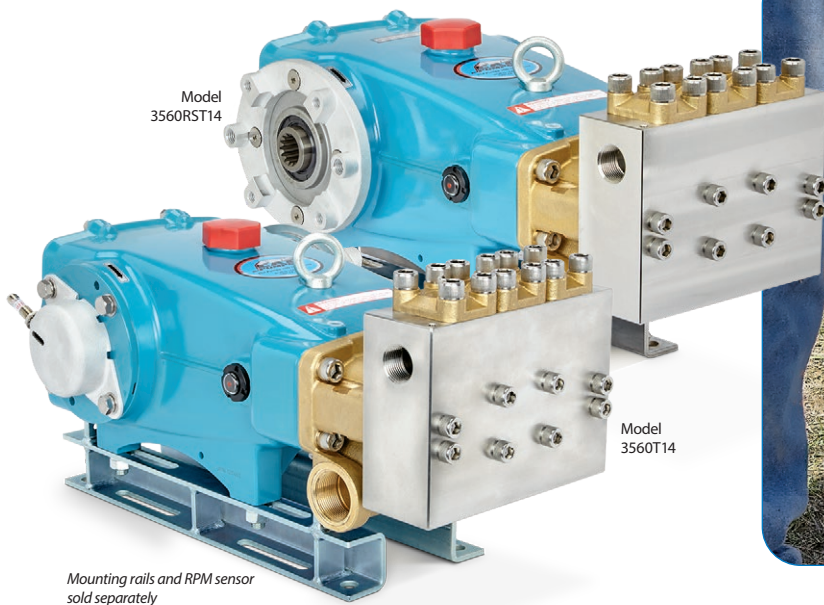


# 3560T14 & 3560RST14 PLUNGER PUMPS



20 GPM | 4,000 PSI  
25 GPM | 3,000 PSI (Alternate)

## Optimize Cabinet Space with Cat Pumps

Mobile equipment OEMs face challenges with limited space for components when designing and building heavy-duty portable pumping systems. To address this, the Model 3560 has been revamped to fit into an even smaller footprint than the current bell housing design by using a new direct-mount flange and hollow spline shaft, allowing it to pair with a compact SAE-C hydraulic motor.

The new 3560T14 and 3560RST14 designs significantly reduce the pump width by more than 8 inches over a standard bell housing configuration, saving valuable on-board real estate and providing configurations for the motor to mount on either side. Equipment builders can even add an optional electronic RPM speed sensor to ensure accurate, consistent pump operation.

Mobile equipment operators perform under some of the harshest conditions, so their equipment needs to be the most durable and reliable available. This is exactly what owners and operators expect from Cat Pumps — high-quality, dependable products backed by the industry's best customer service and support.

### Features:

- 14-tooth hollow spline shaft allows for direct mounting of 2 or 4-bolt SAE C hydraulic motors to the pump, greatly reducing the space requirement.
- 8" narrower when compared to a standard 3560 with a bell housing configuration.
- The same proven 3560 manifolds, seals, valves and drive-ends that customers have trusted for decades.
- An optional RPM sensor can provide electronic pump speed feedback to an electronic control system.
- Solid block 316 stainless steel discharge manifold safeguards the pump against high-pressure spikes, cavitation and flaking.
- Wet-end is easily serviceable from the front, allowing quick, on-truck maintenance.

### Typical Applications:

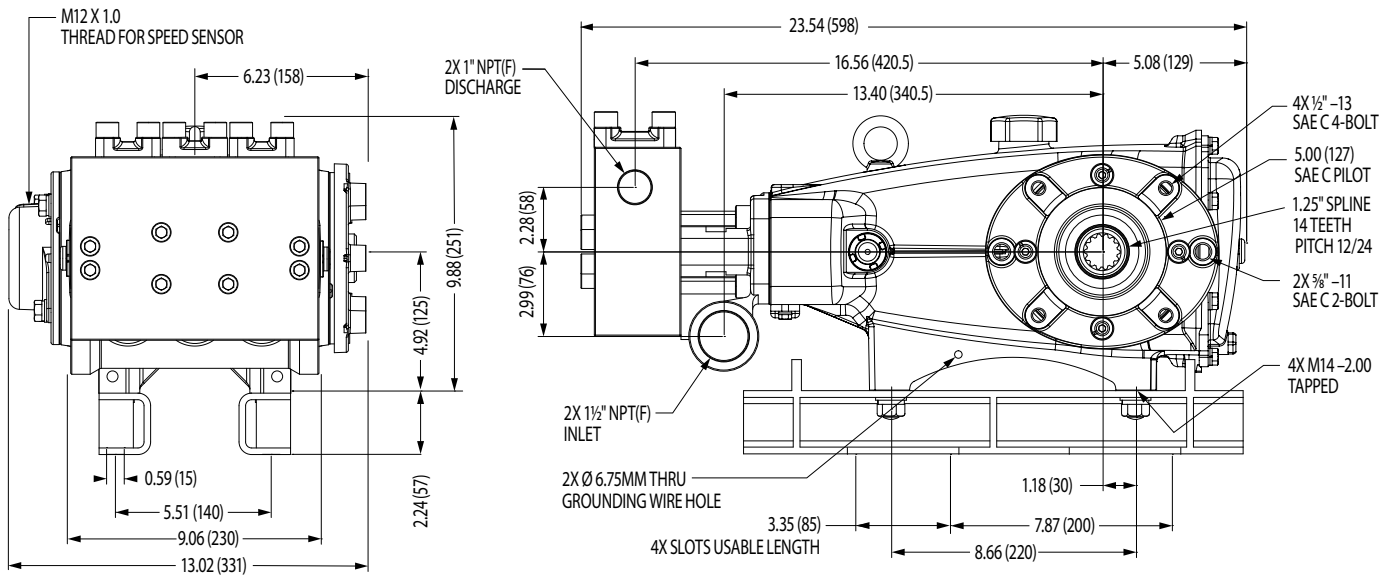
- Hydro Excavating
- Sewer Jetting

## Specifications

	US MEASURE	METRIC MEASURE
Flow	20 gpm	76 lpm
Pressure	4,000 psi	275 bar
RPM	1160 rpm	1160 rpm
Flow (Alternate)	25 gpm	95 lpm
Pressure (Alternate)	3,000 psi	207 bar
RPM (Alternate)	1450 rpm	1450 rpm

	US MEASURE	METRIC MEASURE
Inlet Pressure Range	Flooded to 70 psi	Flooded to 4.8 bar
Max Liquid Temp	160° F	71° C
Inlet Ports (2)	1½" NPT(F)	1½" NPT(F)
Discharge Ports (2)	1" NPT(F)	1" NPT(F)
Weight	136 lbs	61.8 kg
Dimensions	23.54 x 13.02 x 9.88"	598 x 331 x 251 mm

## Dimensions



## Popular Accessories



**Unloader**  
PN 7593  
10 – 52.8 gpm  
406 – 4,060 psi



**Pop-Off Valve**  
PN 9940  
0 – 25 gpm  
1,000 – 4,000 psi



**Pressure Gauge**  
PN 6089  
0 – 6,000 psi



**Inlet Filter**  
PN 7108.8  
60 gpm Max  
1½" NPT(F)



**Oil**  
PN 6102  
2.5 Gallon Jug  
Specially-Formulated  
for Extended Protection

Contact Cat Pumps for more information at [info@catpumps.com](mailto:info@catpumps.com) or (763) 780-5440



**CAT PUMPS**  
1681 – 94TH LANE N.E. MINNEAPOLIS, MN 55449-4324  
PHONE (763) 780-5440 — FAX (763) 780-2958  
[info@catpumps.com](mailto:info@catpumps.com) | [www.catpumps.com](http://www.catpumps.com)