

MODEL 1530RSCM.CO₂

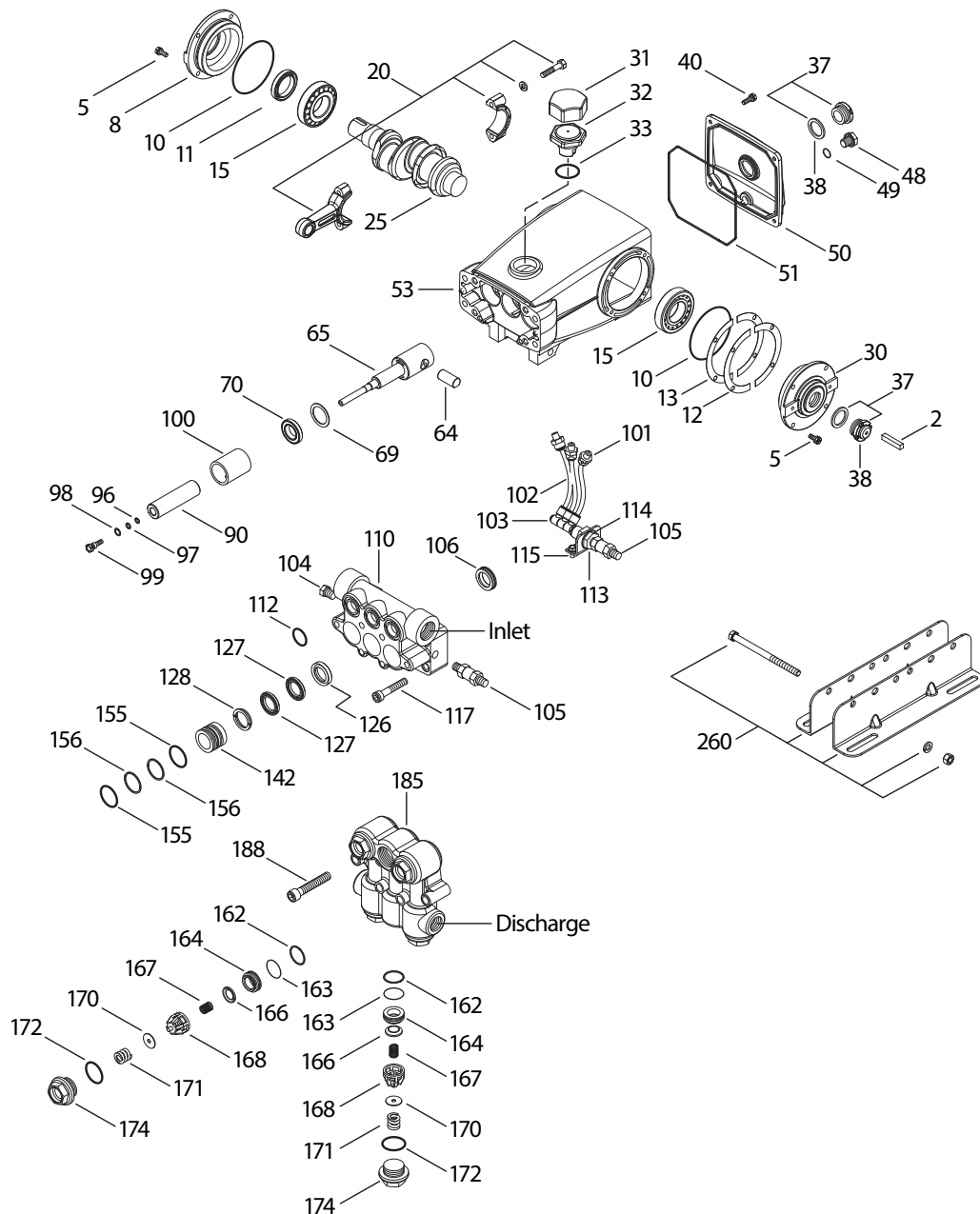


SPECIFICATIONS	U.S. Measure	Metric Measure
Flow	5.0 gpm	19.0 lpm
Pressure Range	400 to 1800 psi	27.5 to 124 bar
Pump RPM*	450	450
Inlet Pressure Range**	300 to 400 psi	21 to 27.5 bar
Min. Liquid Temperature	-20° F	-29° C
Bore	0.984"	25 mm
Stroke	1.181"	30 mm
Crankcase Capacity	42 oz.	1.26 l

SPECIFICATIONS	U.S. Measure	Metric Measure
Inlet Ports (2)	1" NPT(F)	1" NPT(F)
Flush Ports (2)	1/4" NPT(F)	1/4" NPT(F)
Discharge Ports (2)	3/4" NPT(F)	3/4" NPT(F)
Shaft Diameter	1.181"	30 mm
Weight	55 lbs.	25 kg
Dimensions	17.24 x 13.0 x 7.4"	438 x 330 x 188 mm

*Pump minimum is 100 RPM.
**Temperature and pressure must be maintained to keep incoming CO₂ in a liquid state.

EXPLODED VIEW



PARTS LIST

ITEM PN	MATL	DESCRIPTION	QTY	ITEM PN	MATL	DESCRIPTION	QTY
2	990036	STL Key (M8x7x40) (Use With Hub 990012)	1	102	999492	NY Tubing	3
	30067	STL Key (M8x7.5x25) (Use With Hub 30059)	1	103	999491	PLM Manifold	1
5	125824	STCP R Screw, Sems HHC (M6x16)	8	104	22177	BBCP Plug [1/4" NPT(M)]	1
8	43496	AL Cover, Bearing	1	105	33937	SS Valve, Check [1/4" NPT(M)]	2
10	11340	NBR O-Ring, Bearing Cover - 70D	2	106	701944	SFTA Seal, LPS w/SS-Spg	3
11	43495	NBR Seal, Oil, Crankshaft - 70D	1	110	48608C	FBB Manifold, Inlet (Flushed)	1
12	815281	FBR Shim, Split 2 pc	0-6	112	14200	NBR O-Ring, Inlet Manifold - 70D	3
13	814800	S Shim, Split 2 pc	0-4	113	34338	BB Union (1/4" NPTM)	1
15	39060	STL Bearing, Roller	2	114	34347	STZP Bracket	1
20	768600	TNM Rod, Connecting Assembly (w/PLM Bushing)	3	115	990776	STZP R Screw, HHC (1/4"-20x1/2")	2
25	49954	FCM Crankshaft, Single End (M30)	1	117	126515	STCP R Screw, HSH (M10x55)	4
30	76029	AL Cover, Bearing, w/ Insert	1	126	48538	BB Adapter, Female	3
31	828710	— Protector, Oil Cap w/Foam Gasket	1	127	44610	STG V-Packing	6
32	43211	ABS Cap, Oil Filler	1	128	48539	BB Adapter, Male	3
33	14177	NBR O-Ring, Filler Cap - 70D	1	142	48550	BB Spacer w/Coil Springs	3
37	92241	— Gauge, Oil, Bubble w/Gasket - 80D	2	155	17629	NBR O-Ring, Spacer - 80D	6
38	44428	NBR Gasket, Flat, Oil Gauge - 80D	2	156	28243	PTFE Back-up-Ring, Spacer	6
40	126541	STCP R Screw, Sems HHC (M6x20)	4	162	48363	D Back-up-Ring, Seat	6
48	25625	STCP Plug, Drain (1/4"x19BSP)	1	163	26142	NBR O-Ring, Seat - 80D	6
49	23170	NBR O-Ring, Drain Plug - 70D	1	164	48596	S Seat, Q.V. Stepped	6
50	43491	AL Cover, Rear	1	166	48686	SS Valve, Q.V.	6
51	44834	NBR O-Ring, Rear Cover - 70D	1	167	48687	SS Spring, Valve [12/02]	6
53	115471	AL Crankcase w/Guide Pins	1	168	44735	PVDF Retainer, Spring	6
64	763507	CM Pin, Crosshead (w/Flats)	3	170	44794	SS Washer, Spring Retainer	6
65	76228	SHS Rod, Plunger (w/Set Screws)	3	171	48689	SS Spring, Coil [12/02]	6
69	126592	STCP R Washer, Oil Seal	3	172	17629	NBR O-Ring, Valve Plug - 80D	6
70	43500	NBR Seal, Oil Crankcase - 80D	3	174	48597	FBB Plug, Valve	6
90	48606	CC Plunger, Ceramic (M25x92)	3	185	48610	FBB Manifold, Discharge	1
96	43235	PTFE Back-up-Ring, Plunger Retainer	3	188	126519	STCP R Screw, HSH (M12x70)	6
97	17399	NBR O-Ring, Plunger Retainer - 80D	3	260	30613	STZP Rail, Angle Assy	1
98	45891	CU Gasket, Plunger Retainer	3	300	31355CO2	NBR* Kit, Seal (Incls: 97,106,112,127,155,156)	1
99	104360	S Retainer, Plunger	3	310	31360	NBR Kit, Valve (Incls: 162,163,164,166,167,168,170,172)	2
100	769509	AL Retainer, Seal	3	—	6107	— Oil, Bottle (21 oz) ISO 68 Hydraulic	2
101	999490	D Adapter	3				

Italics are optional items. [] Date of latest production change.

R Components comply with RoHS Directive. * Review material codes for individual items (STG generally may be used as alternate).

See Tech Bulletins 002, 003, 024, 035, 036, 043, 053, 074, 083, and 085 for additional information.

MATERIAL CODES (Not Part of Part Number): ABS=ABS Plastic AL=Aluminum BB=Brass BBCP=Brass/Chrome Plated CC=Ceramic CM=Chrome-moly CU=Copper D=Acetal

FBB=Forged Brass FBR=Fiber FCM=Forged Chrome-moly NBR=Medium Nitrile (Buna-N) NY=Nylon PLM=Unspecified Poly PTFE=Pure Polytetrafluoroethylene

PVDF=Polyvinylidene Fluoride S=304SS SFTA=Special Blend PTFE (Tan) SHS=304SS/High Strength SS=316SS STCP=Steel/Chrome Plated STG=Special Blend PTFE White STL=Steel

STZP=Steel/Zinc Plated TNM=Special High Strength

⚠ CAUTIONS AND WARNINGS

All High-Pressure Systems require a primary pressure regulating device (i.e. regulator, unloader) and a secondary pressure relief device (i.e. pop-off valve, relief valve). Failure to install such relief devices could result in personal injury or damage to pump or property. Cat Pumps does not assume any liability or responsibility for the operation of a customer's high pressure system.

Read all CAUTIONS and WARNINGS before commencing service or operation of any high pressure system. The CAUTIONS and WARNINGS are included in each service manual and with each Accessory Data sheet. CAUTIONS and WARNINGS can also be viewed online at www.catpumps.com/cautions-warnings or can be requested directly from Cat Pumps.

WARRANTY

View the Limited Warranty on-line at www.catpumps.com/warranty.



CAT PUMPS

1681 - 94th Lane N.E. Minneapolis, MN 55449-4324

Phone (763) 780-5440 · Fax (763) 780-2958 · e-mail: techsupport@catpumps.com · www.catpumps.com