

MODEL 1560M.CO₂



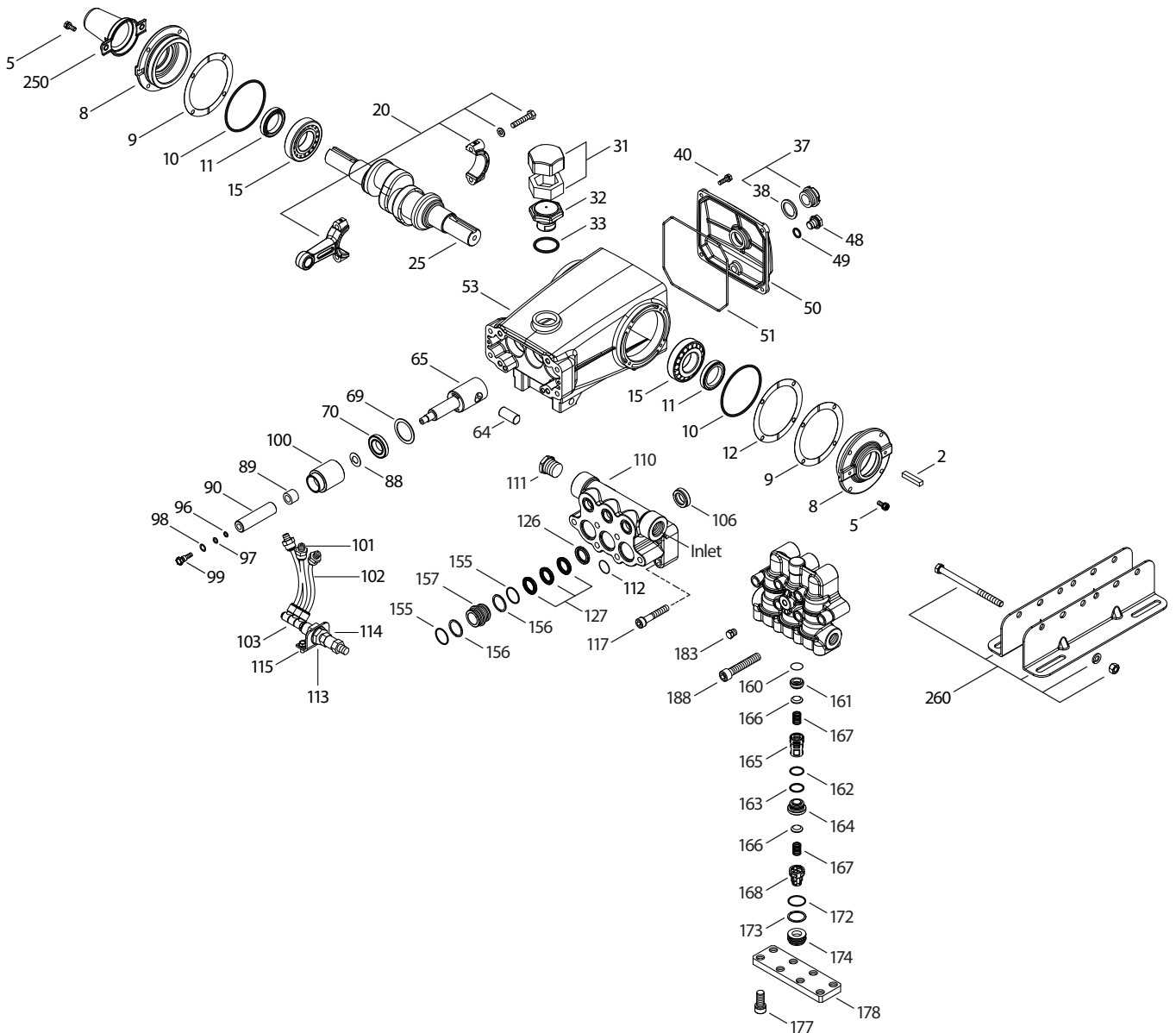
SPECIFICATIONS	U.S. Measure	Metric Measure
Flow	2.5 gpm	9.5 lpm
Pressure Range	400 to 4000 psi	27.5 to 275 bar
Pump RPM**	450	450
*Inlet Pressure Range	300 to 400 psi	21 to 27.5 bar
Min. Liquid Temperature	-20° F	-29° C
Bore	0.787"	20 mm
Stroke	1.181"	30 mm
Crankcase Capacity	42 oz.	1.26 l

SPECIFICATIONS	U.S. Measure	Metric Measure
Inlet Ports (2)	3/4" NPT(F)	3/4" NPT(F)
Flush Ports (2)	1/8" NPT(F)	1/8" NPT(F)
Discharge Ports (2)	1/2" NPT(F)	1/2" NPT(F)
Shaft Diameter	1.181"	300 mm
Pulley Mounting	Either Side	Either Side
Weight	59.9 lbs.	27.2 kg
Dimensions	16.93 x 12.99 x 6.44"	430 x 330 x 163.5 mm

* Temperature and pressure must be maintained to keep incoming CO₂ in a liquid state.

** Pump minimum is 100 RPM.

EXPLODED VIEW



PARTS LIST

ITEM PN	MATL	DESCRIPTION	QTY	ITEM PN	MATL	DESCRIPTION	QTY
2	990036	STL Key (M8x7x40) use w/30059 and 990012 "H" hubs	1	105	33937	SS Valve, Check [1/4"NPT(M)]	1
	30067	STL key (M8x7.5x25) use w/30059 "H" hub	1	106	76071	ST2 Seal, LPS, w/SS-Spg	3
5	125824	STCP R Screw, HHC Sems (M6x16)	8	110	49229	FBB Manifold, Inlet	1
8	49535	ALE Covering, Bearing (See Tech Bulletin 118)	2	111	20326	BBCP Plug, Inlet [3/4"NTP(M)]	1
9	815281	FBR Shim, Split 2-Piece	2	112	14179	NBR O-Ring, Inlet Manifold - 70D	3
10	11340	NBR O-Ring, Bearing Cover - 70D	2	113	34338	BB Union [1/4"NPT(M)]	1
11	43495	NBR Seal, Oil, Crankshaft	2	114	34347	STZP Bracket	1
12	814800	S Shim, Split 2-Piece	2	115	990776	STZP R Screw, HHC (1/4"-20x1/2")	2
15	39060	STL Bearing, Roller	2	117	126515	STCP R Screw, HSH (M10x55)	4
20	76805	BZ Assembly, Connecting Rod	3	126	49231	BB Adapter, Female	3
25	43494	FCM Crankshaft, Dual End (M30)	1	127	44607	STG V-Packing	9
31	828710	PE Protector, Oil Cap w/Polyurethane Gasket	1	155	14176	NBR O-Ring, Spacer, V/P - 70D	6
32	43211	ABS Cap, Oil Filler	1	156	49232	PTFE Back-up-Ring, Spacer V/P	6
33	14177	NBR O-Ring, Oil Filler Cap - 70D	1	157	49230	BB Spacer, V/P	3
37	92241	— Gauge, Oil, Bubble w/Gasket - 80D	1	160	49238	NBR O-Ring, Seat, Inlet - 80D	3
38	44428	NBR Gasket, Flat, Oil Gauge - 80D	1	161	49237	S Seat, Inlet	3
40	126541	STCP R Screw, HHC Sems (M6x20)	4	162	49235	PTFE Back-up-Ring, Seat	3
48	25625	STCP Plug, Drain (1/4"x19BSP)	1	163	49236	NBR O-Ring, Seat, Discharge - 70D	3
49	23170	NBR O-Ring, Drain Plug - 70D	1	164	49234	S Seat, Discharge	3
50	49276	ALE Cover, Rear (See Tech Bulletin 118)	1	165	49198	PVDF Retainer, Spring, Inlet	3
51	44834	NBR O-Ring, Rear Cover - 70D	1	166	48793	SS Valve	6
53	115471	AL Crankcase (Includes guide pin) (See Tech Bulletin 118)	1	167	43751	S Spring	6
64	763507	CM Pin, Crosshead	3	168	49199	PVDF Retainer, Spring, Discharge	3
65	76803	SBZ Rod, Plunger	3	172	14176	NBR O-Ring, Valve Plug - 70D	3
69	126596	STCP R Washer, Oil Seal	3	173	49232	PTFE Back-up-Ring, Valve Plug	3
70	43500	NBR Seal, Oil, Crankcase	3	174	49239	BB Plug, Valve	3
88	45675	S Washer, Keyhole	3	177	126783	STCP R Screw, HSH (M12 x 25)	8
89	43505	BB Spacer	3	178	49227	BB Cover, Valve	1
90	43300	CC Plunger (M20x77)	3	183	49462	BB Plug, Pulsator Port [1/8"NPT(M)]	1
96	43235	PTFE Back-up-Ring, Plunger Retainer	3	185	49197	FBB Manifold, Discharge	1
97	17399	NBR O-Ring, Plunger Retainer - 80D	3	188	126519	STCP R Screw, HSH (M10 x 70)	6
98	45891	CU Gasket, Plunger Retainer	3	250	30764	NY Protector, Shaft	1
99	104360	S Retainer w/Stud, Plunger	3	260	30613	STZP R Mount, Rail Assembly	1
100	765001	AL Retainer, Seal	3	300	76162	STHT Kit, Seal (Incls: 97,106,112,127,155,156)	1
101	999490	D Adapter, 1/4"	3	310	31872	NBR Kit, Valve Preassembled (Incls: 160 - 168,172,173)	1
102	999492	NY Tubing, 1/4"	3		6107	— Oil, Bottle (21 oz.) ISO-68 Hydraulic	2
103	999491	PLM Manifold	1			(Fill to specified crankcase capacity prior to start-up)	

Italics are optional items. [] Date of latest production change.

R Components comply with RoHS Directive. * Review material codes for individual items (STG generally may be used as alternate).

See Tech Bulletins 002, 003, 024, 035, 036, 043, 053, 074, 083, and 118 for additional information.

MATERIAL CODES (Not Part of Part Number): ABS=ABS Plastic AL=Aluminum ALE=Aluminum Epoxy BB=Brass BBCP=Brass/Chrome Plated BZ=Bronze CC=Ceramic CM=Chrome-moly

CU=Copper D=Acetal FBB=Forged Brass FBR=Fiber FCM=Forged Chrome-moly NBR=Medium Nitrile (Buna-N) NY=Nylon PE=Polyethylene PLM=Unspecified Poly

PTFE=Pure Polytetrafluoroethylene PVDF=Polyvinylidene Fluoride S=304SS SBZ=304SS w/Bronze SS=316SS STCP=Steel/Chrome Plated ST2=Special PTFE 2 STG=Special Blend PTFE White

STHT=Special PTFE High Temp STL=Steel STZP=Steel/Zinc Plated

⚠ CAUTIONS AND WARNINGS

All High-Pressure Systems require a primary pressure regulating device (i.e. regulator, unloader) and a secondary pressure relief device (i.e. pop-off valve, relief valve). Failure to install such relief devices could result in personal injury or damage to pump or property. Cat Pumps does not assume any liability or responsibility for the operation of a customer's high pressure system.

Read all CAUTIONS and WARNINGS before commencing service or operation of any high pressure system. The CAUTIONS and WARNINGS are included in each service manual and with each Accessory Data sheet. CAUTIONS and WARNINGS can also be viewed online at www.catpumps.com/cautions-warnings or can be requested directly from Cat Pumps.

WARRANTY

View the Limited Warranty on-line at www.catpumps.com/warranty.



CAT PUMPS

1681 - 94th Lane N.E. Minneapolis, MN 55449-4324

Phone (763) 780-5440 · Fax (763) 780-2958 · e-mail: techsupport@catpumps.com · www.catpumps.com