

# MODEL 1861KM.CO<sub>2</sub>



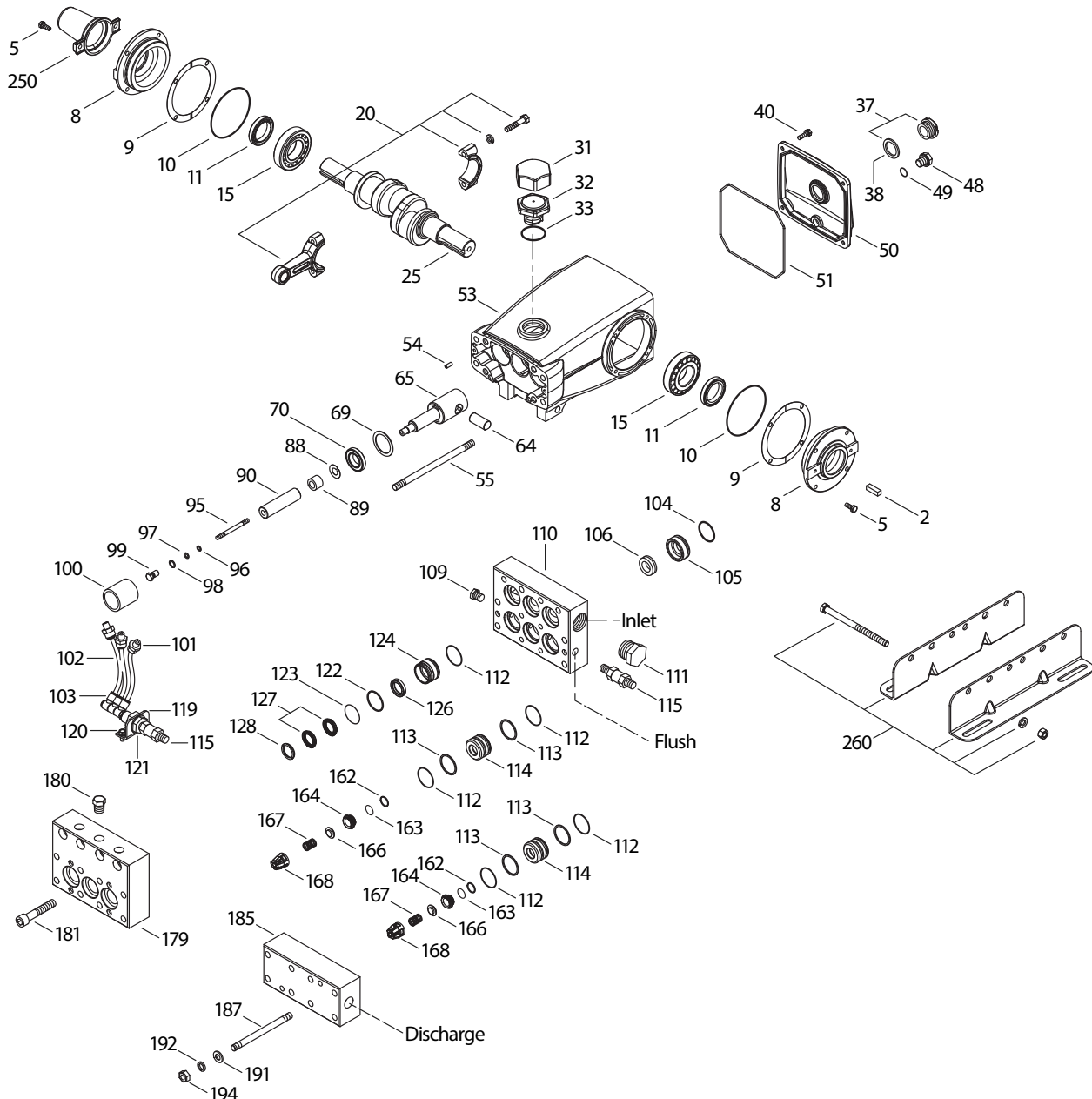
SPECIFICATIONS	U.S. Measure	Metric Measure
Flow	2.5 gpm	9.5 lpm
Pressure Range	400 to 3000 psi	27.5 to 207 bar
Pump RPM**	450	450
*Inlet Pressure Range	300 to 800 psi	21 to 55 bar
Min. Liquid Temperature	-20° F	-29° C
Bore	0.787"	20 mm
Stroke	1.181"	30 mm
Crankcase Capacity	42 oz.	1.26 l

SPECIFICATIONS	U.S. Measure	Metric Measure
Inlet Ports (2)	1" NPT(F)	1" NPT(F)
Flush Ports (2)	1/4" NPT(F)	1/4" NPT(F)
Discharge Ports (2)	1/2" NPT(F)	1/2" NPT(F)
Shaft Diameter	1.181"	30 mm
Pulley Mounting	Either Side	Either Side
Weight	67 lbs.	30.4 kg
Dimensions	18.37 x 12.99 x 6.41"	466 x 330 x 163 mm

\* Temperature and pressure must be maintained to keep incoming CO<sub>2</sub> in a liquid state.

\*\* Pump minimum is 100 RPM.

## EXPLODED VIEW



## PARTS LIST

ITEM PN	MATL	DESCRIPTION	QTY	ITEM PN	MATL	DESCRIPTION	QTY
2	30067	STL Key (M8x7.5x25) use w/30059 hub	1	105	701270	SS Adapter, LPS	3
5	92538	S Screw, HHC Sems (M6x16)	8	106	703179	SFTA Seal, LPS, w/SS-Spg	3
8	43496	AL Covering, Bearing (See Tech Bulletin 118)	2	109	22177	BBCP Plug, [1/4"NPT(M)]	1
9	815281	FBR Shim, Split 2-Piece	0/2	110	701309	SS Manifold, Inlet, Block-Style, Flushed	1
	814800	S Shim, Split 2-Piece	0/2	111	701342	SS Plug, Inlet [1"NPT(M)]	1
10	11340	NBR O-Ring, Bearing Cover - 70D	2	112	26969	NBR O-Ring, Spacer - 70D	15
11	43495	NBR Seal, Oil, Crankshaft	2	113	28204	PTFE Back-up-Ring, Spacer	12
15	39060	STL Bearing, Roller	2	114	701272	SS Adapter, Valve, IMDM	6
20	768600	TNM Assembly, Connecting Rod	3	115	33937	SS Valve, Check (1/4"NPT(M))	2
25	43494	FCM Crankshaft, Dual End (M30)	1	119	34347	STZP Bracket	1
31	828710	PE Protector, Oil Cap w/Polyurethane Gasket	1	120	990776	STZP R Screw, HHC (1/4"-20 x 1/2")	2
32	43211	ABS Cap, Oil Filler	1	121	34338	BB Union (1/4"NPT(M))	1
33	14177	NBR O-Ring, Oil Filler Cap - 70D	1	122	43519	PTFE Back-up-Ring, Cylinder	3
37	92241	— Gauge, Oil, Bubble w/Gasket - 80D	1	123	13984	NBR O-Ring, Cylinder	3
38	44428	NBR Gasket, Flat, Oil Gauge - 80D	1	124	701271	SS Cylinder, V-Packing	3
40	92542	S Screw, HHC Sems (M6x20)	4	126	44164	SS Adapter, Female	3
48	25625	STCP Plug, Drain (1/4"x19BSP)	1	127	44607	STG V-Packing	6
49	23170	NBR O-Ring, Drain Plug - 70D	1	128	44165	SS Adapter, Male	3
50	43491	AL Cover, Rear (See Tech Bulletin 118)	1	162	43248	PTFE Back-up-Ring, Seat	6
51	44834	NBR O-Ring, Rear Cover - 70D	1	163	43249	NBR O-Ring, Seat - 80D	6
53	115471	AL Crankcase (Includes guide pin) (See Tech Bulletin 118)	1	164	44037	SS Seat	6
54	27488	S Pin, Guide	2	166	48793	SS Valve	6
55	701268	SS Stud, Manifold (M10x180)	4	167	44039	SS Spring	6
64	763507	CM Pin, Crosshead	3	168	44564	PVDF Retainer, Spring	6
65	768892	SSHB Rod, Plunger	3	179	701265	SS Manifold, Valve Block, Block-Style	1
69	126596	STCP R Washer, Oil Seal	3	180	701078	SS Plug [3/8"NPT(M)]	3
70	43500	NBR Seal, Oil, Crankcase	3	181	89628	S Screw, HSH (M12x65)	4
88	45675	S Washer, Keyhole (M12)	3	185	701300	SS Manifold, Discharge, Block-Style	1
89	45880	SS Spacer, Collar	3	187	701269	SS Stud, Manifold (M10x132)	4
90	43300	CC Plunger (M20x77)	3	191	19934	S Washer, Flat (M10)	8
95	89651	SS Stud, Plunger Retainer (M6x70)	3	192	15847	S Lockwasher (M10)	8
96	43235	PTFE Back-up-Ring, Plunger Retainer	3	194	81258	S Nut (M10)	8
97	17399	NBR O-Ring, Plunger Retainer - 80D	3	250	307645	NY Protector, Shaft w/2 SS-Screws	1
98	44041	SS Gasket, Plunger Retainer	3	260	30613	STZP R Mount, Rail Assembly	1
99	44031	SS Retainer, Plunger (M6)	3	300	76375	NBR* Kit, Seal (Incls: 97, 104, 106, 112, 113, 122, 123, 127)	1
100	763509	AL Retainer, Seal	3	310	701695	NBR Kit, Valve Preassembled (Incls: 162, 163, 164, 166, 167, 168)	2
101	999490	D Adapter, 1/4"	3		6107	— Oil, Bottle (21 oz.) ISO-68 Hydraulic (Fill to specified crankcase capacity prior to start-up)	2
102	999492	NY Tubing, 1/4"	3		6119	— Lubricant, Antiseize (2 oz) (See Tech Bulletin 095)	1
103	999491	PLM Manifold (3x1/4)	1				
104	11379	NBR O-Ring, Inlet Adapter - 70D	3				

*Italics are optional items. [ ] Date of latest production change.*

R Components comply with RoHS Directive. \* Review material codes for individual items (STG generally may be used as alternate).

See Tech Bulletins 002, 003, 024, 035, 036, 043, 053, 074, 083, 095 and 118 for additional information.

MATERIAL CODES (Not Part of Part Number): ABS=ABS Plastic AL=Aluminum BB=Brass BBCP=Brass/Chrome Plated CC=Ceramic CM=Chrome-moly D=Acetal FBR=Fiber FCM=Forged Chrome-moly NBR=Medium Nitrile (Buna-N) NY=Nylon PE=Polyethylene PLM=Unspecified Poly PTFE=Pure Polytetrafluoroethylene PVDF=Polyvinylidene Fluoride S=304SS SFTA=Special Blend PTFE Tan SS=316SS SSHB=316SS/High Strength Brass STCP=Steel/Chrome Plated STG=Special Blend PTFE White STL=Steel STZP=Steel/Zinc Plated TNM=Special High Strength

### ⚠ CAUTIONS AND WARNINGS

All High-Pressure Systems require a primary pressure regulating device (i.e. regulator, unloader) and a secondary pressure relief device (i.e. pop-off valve, relief valve). Failure to install such relief devices could result in personal injury or damage to pump or property. Cat Pumps does not assume any liability or responsibility for the operation of a customer's high pressure system.

Read all CAUTIONS and WARNINGS before commencing service or operation of any high pressure system. The CAUTIONS and WARNINGS are included in each service manual and with each Accessory Data sheet. CAUTIONS and WARNINGS can also be viewed online at [www.catpumps.com/cautions-warnings](http://www.catpumps.com/cautions-warnings) or can be requested directly from Cat Pumps.

### WARRANTY

View the Limited Warranty on-line at [www.catpumps.com/warranty](http://www.catpumps.com/warranty).



### CAT PUMPS

1681 - 94th Lane N.E. Minneapolis, MN 55449-4324

Phone (763) 780-5440 · Fax (763) 780-2958 · e-mail: [techsupport@catpumps.com](mailto:techsupport@catpumps.com) · [www.catpumps.com](http://www.catpumps.com)