

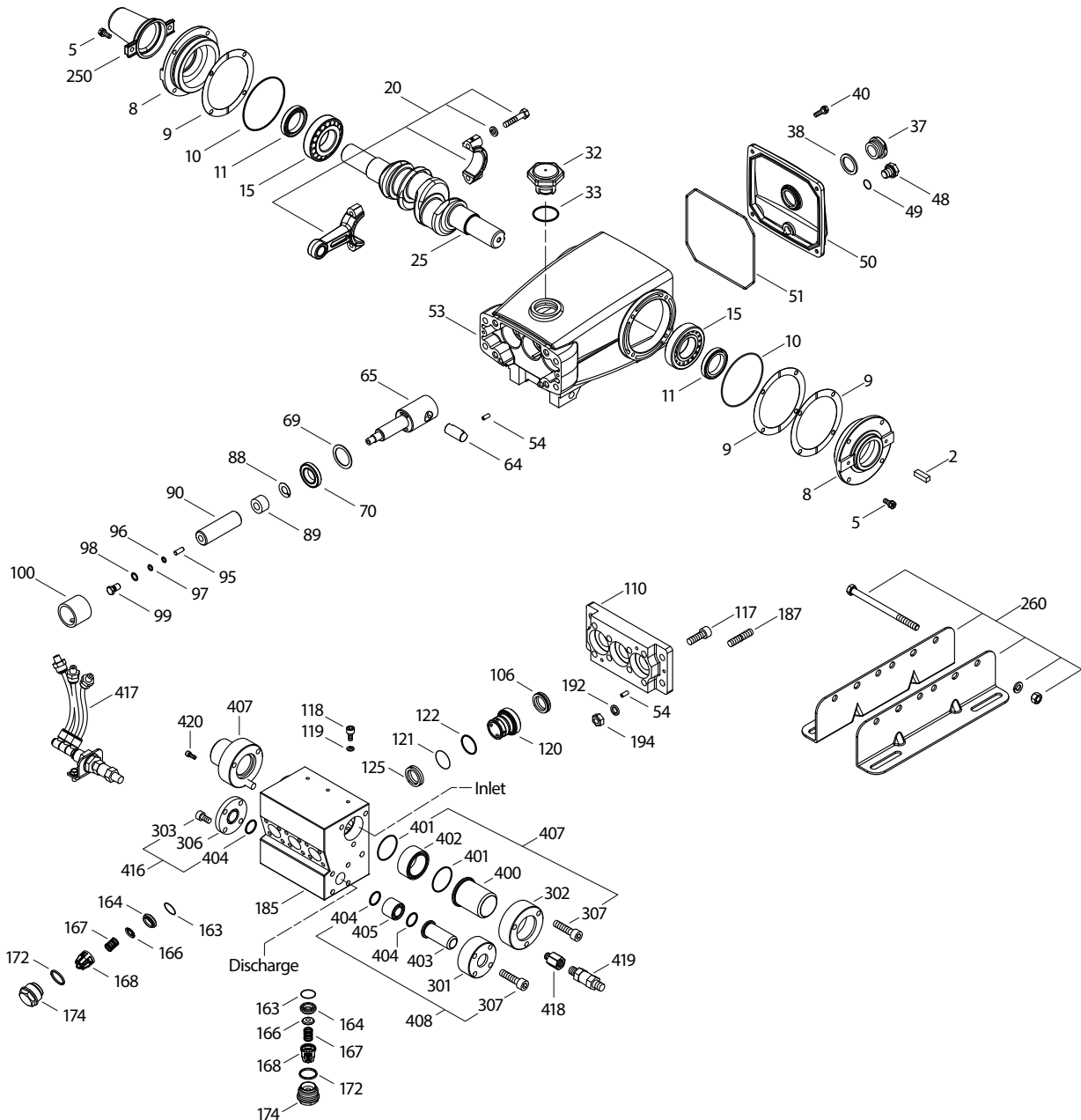
MODEL 1951K



SPECIFICATIONS	U.S. Measure	Metric Measure
Flow	5.0 gpm	19 lpm
Pressure Range	400 to 1450 psi	28 to 100 bar
Max. RPM	480	480
*Inlet Pressure Range	300 to 800 psi	21 to 55 bar
Crankcase Capacity	42 oz.	1.26 l
Dimensions	16.37 x 12.99 x 6.69"	416 x 330 x 170 mm
Weight	71 lbs.	32 kg

* Temperature and pressure must be maintained to keep incoming CO₂ in a liquid state.

EXPLODED VIEW



PARTS LIST

ITEM PN	MATL	DESCRIPTION	QTY	ITEM PN	MATL	DESCRIPTION	QTY		
2	30067	STL	Key (M7x7x40) (Not Shown)	1	120	702459	SS	Case, Low Pressure Seal	3
5	700957	S	Screw, Sems (M6 x 16)	8	121	33333	NBR	O-Ring, Spacer - 90D	3
	700960	S	Washer (M6)	8	122	44614	PTFE	Back-up Ring, Spacer	3
	15849	S	Lockwasher (M6)	8	125	702680	SFTB	Seal, HPS w/NIH-Spg	3
8	43496	AL	Case, Bearing (See Tech Bulletin 118)	2	163	702450	NBR	O-Ring, Seat - 90D	6
9	815281	FBR	Shim, Split, 2-Pc	0-6	164	702460	SS	Seat	6
10	11340	NBR	O-Ring, Bearing Cover - 70D	2	166	43721	S	Valve	6
11	43495	NBR	Seal, Oil, Crankshaft - 70D	2	167	43751	S	Spring	6
15	39060	STL	Bearing, Roller	2	168	44564	PVDF	Retainer, Spring	6
20	768600	TNM	Rod, Connecting Assembly	3	172	702660	PTFE	Washer, Seal	6
25	43494	FCM	Crankshaft, Dual-End, (M30)	1	174	702458	SS	Plug, Valve	6
32	43211	ABS	Cap, Oil Filler	1	185	703506	SS	Manifold, Inlet / Discharge	1
33	14177	NBR	O-Ring, Filler Cap - 70D	1	187	44005	S	Stud, Manifold (M10 x 45)	4
37	92241	—	Gauge, Oil, Bubble w/Gasket - 80D	1	192	15847	S	Lockwasher (M10)	4
38	44428	NBR	Gasket, Flat, Oil Gauge - 80D	1	194	81258	S	Nut, Hex (M10)	4
40	700956	S	Screw, Sems (M6x20)	4	250	30764	NY	Protector, Shaft w/2 Screws	1
	700960	S	Washer (M6)	4	260	30613	STZP	Mount, Rail, Assy	1
	15849	S	Lockwasher (M6)	4	299	704181	SS	Head, Complete	1
48	25625	STCP	Plug, Drain (1/4"x19BSP)	1	300	702362	NBR	Kit, Seal (Incls: 96, 97, 106, 121, 122, 125, 401, 404)	1
49	23170	NBR	O-Ring, Drain Plug - 70D	1	301	702483	SS	Ring, Flange (Discharge)	1-2
50	43491	AL	Cover, Rear (See Tech Bulletin 118)	1	302	702479	SS	Ring, Flange (Inlet)	1-2
51	44834	NBR	O-Ring, Rear Cover - 70D	1	303	701240	S	Screw, HSH (M8x16)	0-7
53	115471	AL	Crankcase (See Tech Bulletin 118)	1	305	702481	SS	Plate, Blank (Inlet Port)	0-1
54	27488	S	Pin, Guide	4	306	702485	SS	Plate, Blank (Discharge Port)	0-1
64	763507	CM	Pin, Crosshead	3	307	703032	SS	Screw, HSH (M8x40)	7-14
65	768892	SZZ	Rod, Plunger	3	310	702360	NBR	Kit, Valve (Incls: 163, 164, 166, 167, 168, 172)	2
69	126592	STCP R	Washer, Oil Seal	3	400	702480	SS	Pipe, Inlet (Weld Prep)	2
70	43500	NBR	Seal, Oil, Crankcase - 80D	3	401	702663	NBR	O-Ring, Inlet Flange - 90D	3-4
88	45675	S	Washer, Keyhole	3	402	702478	SS	Spacer, Face Seal (Inlet Flange)	2
89	45879	SS	Spacer, Plunger	3	403	702484	SS	Pipe, Discharge (Weld Prep)	1-2
90	43552	CC	Plunger, Ceramic (M24x77)	3	404	702664	NBR	O-Ring, Discharge Flange - 90D	3-4
95	89651	ss	Stud, Retainer (M6x16)	3	405	702482	SS	Spacer, Face Seal (Discharge Flange)	1-2
96	43235	PTFE	Back-up Ring, Plunger Retainer	3	407	702661	SS	Assembly, Inlet Flange (Incls: 302, 307, 400, 401, 402)	1-2
97	17399	NBR	O-Ring, Plunger Retainer - 80D	3	408	702662	SS	Assembly, Discharge Flange (Incls: 301, 307, 403, 404, 405)	1-2
98	44041	SS	Gasket, Plunger Retainer	3	415	702671	SS	Assembly, Inlet Port Blank (Incls: 303, 305, 401)	1
99	44031	SS	Retainer, Plunger (M6)	3	416	702672	SS	Assembly, Discharge Port Blank (Incls: 303, 306, 404)	1
100	76807	AL	Retainer, seal (Anti-icing)	3	417	704484	—	Assembly, seal retainer venting	1
106	703335	SFTB	Seal, LPS w/NIH-Spg	3	418	999105	SS	Adapt, [1/4" NPT(F) x 1/8" NPT(M)]	1
110	702457	SS	Plate, Seal Support	1	419	33937	SS	Valve, Check	1
117	87951	S	Screw, HSH (M10x30)	8	420	703055	SS	Plug 1/8"	1
118	704460	SS	Screw, HSH (M6x10)	3					
119	702880	STL/NBR	Seal Washer	3					

Italics are optional items. R Components comply with RoHS Directive. See Tech Bulletins 024, 036, 074, 083 and 095

MATERIAL CODES (Not Part of Part Number): ABS=ABS Plastic AL=Aluminum CC=Ceramic CM=ChromeMoly FCM=Forged Chrome-Mdy NBR=Medium Nitrile (Buna-N) PTFE=Pure Polytetrafluoroethylene PVDF=Polyvinylidene Fluoride S=304SS SS=316SS SFTB=Special Blend Black SZZ=304SS/Zamak STCP=Steel/Chrome Plated STL=Steel STZP=Steel/Zinc Plated TNM=Special High Strength

⚠ CAUTIONS AND WARNINGS

All High-Pressure Systems require a primary pressure regulating device (i.e. regulator, unloader) and a secondary pressure relief device (i.e. pop-off valve, relief valve). Failure to install such relief devices could result in personal injury or damage to pump or property. Cat Pumps does not assume any liability or responsibility for the operation of a customer's high pressure system.

Read all CAUTIONS and WARNINGS before commencing service or operation of any high pressure system. The CAUTIONS and WARNINGS are included in each service manual and with each Accessory Data sheet. CAUTIONS and WARNINGS can also be viewed online at www.catpumps.com/cautions-warnings or can be requested directly from Cat Pumps.

WARRANTY

View the Limited Warranty on-line at www.catpumps.com/warranty.



CAT PUMPS

1681 - 94th Lane N.E. Minneapolis, MN 55449-4324

Phone (763) 780-5440 · Fax (763) 780-2958 · e-mail: techsupport@catpumps.com · www.catpumps.com

For International Inquiries go to www.catpumps.com and navigate to the "Contact Us" link.

PN 99DAT028 Rev A 5/16