

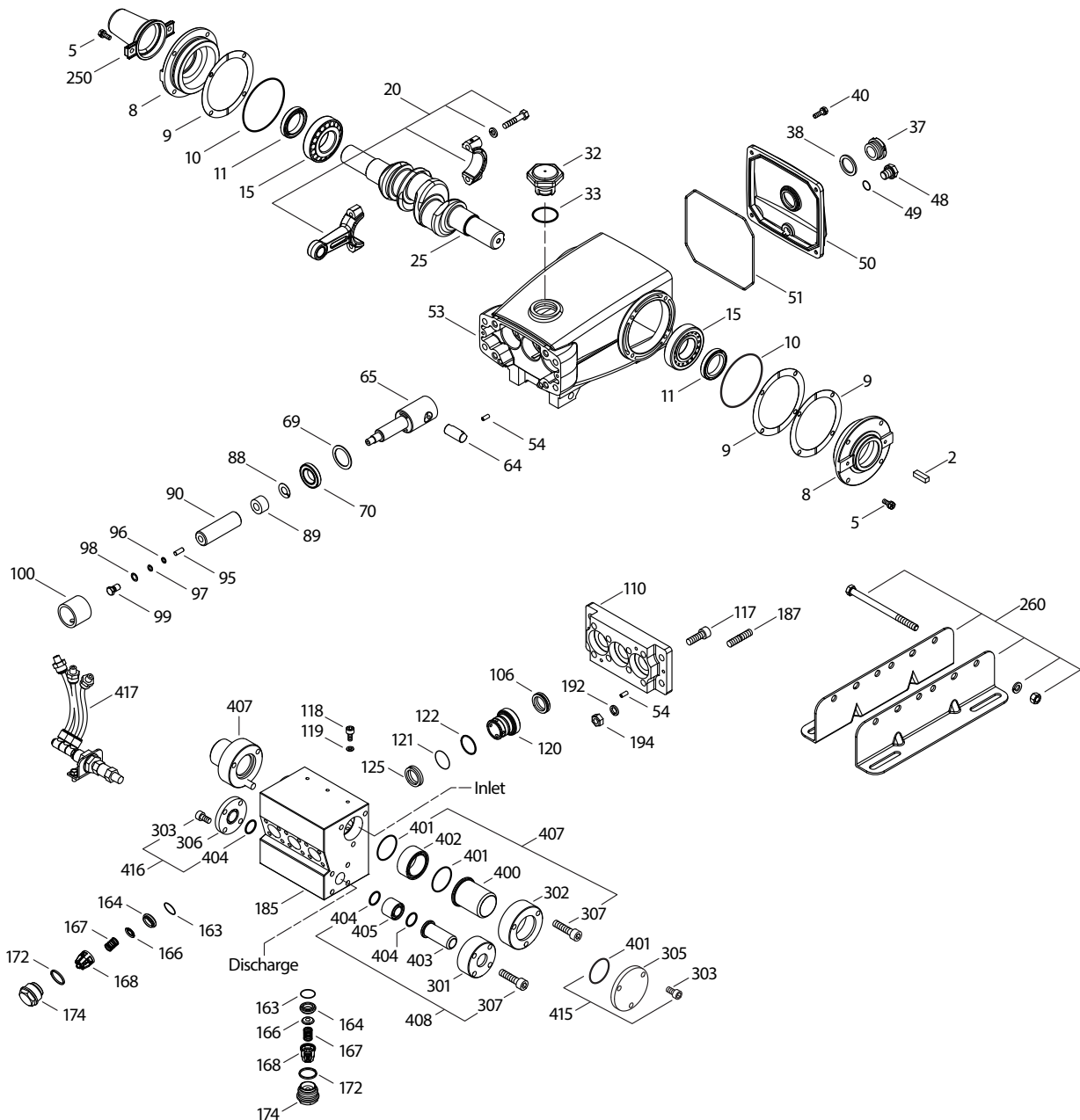
# MODEL 1951



| SPECIFICATIONS        | U.S. Measure          | Metric Measure     |
|-----------------------|-----------------------|--------------------|
| Flow                  | 5.0 gpm               | 19 lpm             |
| Pressure Range        | 400 to 1450 psi       | 28 to 100 bar      |
| Max. RPM              | 480                   | 480                |
| *Inlet Pressure Range | 300 to 800 psi        | 21 to 55 bar       |
| Crankcase Capacity    | 42 oz.                | 1.26 l             |
| Dimensions            | 16.37 x 12.99 x 6.69" | 416 x 330 x 170 mm |
| Weight                | 71 lbs.               | 32 kg              |

\* Temperature and pressure must be maintained to keep incoming CO<sub>2</sub> in a liquid state.

## EXPLODED VIEW



## PARTS LIST

| ITEM PN | MATL   | DESCRIPTION | QTY                                   | ITEM PN | MATL | DESCRIPTION | QTY     |   |      |
|---------|--------|-------------|---------------------------------------|---------|------|-------------|---------|---|------|
| 2       | 30067  | STL         | Key (M7x7x40) (Not Shown)             | 1       | 118  | 704460      | SS      | Screw, HSH (M6x10)  | 3    |
| 5       | 700957 | S           | Screw, Sems (M6 x 16)                 | 8       | 119  | 702880      | STL/NBR | Seal Washer   | 3    |
|         | 700960 | S           | Washer (M6)                           | 8       | 120  | 702459      | SS      | Case, Low Pressure Seal                                     | 3    |
|         | 15849  | S           | Lockwasher (M6)                       | 8       | 121  | 33333       | NBR     | O-Ring, Spacer - 90D  | 3    |
| 8       | 43496  | AL          | Case, Bearing (See Tech Bulletin 118) | 2       | 122  | 44614       | PTFE    | Back-up Ring, Spacer  | 3    |
| 9       | 815281 | FBR         | Shim, Split, 2-Pc                     | 0-6     | 125  | 702680      | SFTB    | Seal, HPS w/NIH-Spg   | 3    |
| 10      | 11340  | NBR         | O-Ring, Bearing Cover - 70D           | 2       | 163  | 702450      | NBR     | O-Ring, Seat - 90D  | 6    |
| 11      | 43495  | NBR         | Seal, Oil, Crankshaft - 70D           | 2       | 164  | 702460      | SS      | Seat  | 6    |
| 15      | 39060  | STL         | Bearing, Roller                       | 2       | 166  | 43721       | S       | Valve   | 6    |
| 20      | 768600 | TNM         | Rod, Connecting Assembly              | 3       | 167  | 43751       | S       | Spring  | 6    |
| 25      | 43494  | FCM         | Crankshaft, Dual-End, (M30)           | 1       | 168  | 44564       | PVDF    | Retainer, Spring  | 6    |
| 32      | 43211  | ABS         | Cap, Oil Filler                       | 1       | 172  | 702660      | PTFE    | Washer, Seal  | 6    |
| 33      | 14177  | NBR         | O-Ring, Filler Cap - 70D              | 1       | 174  | 702458      | SS      | Plug, Valve   | 6    |
| 37      | 92241  | —           | Gauge, Oil, Bubble w/Gasket - 80D     | 1       | 185  | 702456      | SS      | Manifold, Inlet / Discharge                                 | 1    |
| 38      | 44428  | NBR         | Gasket, Flat, Oil Gauge - 80D         | 1       | 187  | 44005       | S       | Stud, Manifold (M10 x 45)                                   | 4    |
| 40      | 700956 | S           | Screw, Sems (M6x20)                   | 4       | 192  | 15847       | S       | Lockwasher (M10)  | 4    |
|         | 700960 | S           | Washer (M6)                           | 4       | 194  | 81258       | S       | Nut, Hex (M10)  | 4    |
|         | 15849  | S           | Lockwasher (M6)                       | 4       | 250  | 30764       | NY      | Protector, Shaft w/2 Screws                                 | 1    |
| 48      | 25625  | STCP        | Plug, Drain (1/4"x19BSP)              | 1       | 260  | 30613       | STZP    | Mount, Rail, Assy   | 1    |
| 49      | 23170  | NBR         | O-Ring, Drain Plug - 70D              | 1       | 299  | 702665      | SS      | Head, Complete  | 1    |
| 50      | 43491  | AL          | Cover, Rear (See Tech Bulletin 118)   | 1       | 300  | 702362      | NBR     | Kit, Seal (Incls: 96, 97, 106, 121, 122, 125, 401, 404)     | 1    |
| 51      | 44834  | NBR         | O-Ring, Rear Cover - 70D              | 1       | 301  | 702483      | SS      | Ring, Flange (Discharge)                                    | 1-2  |
| 53      | 115471 | AL          | Crankcase (See Tech Bulletin 118)     | 1       | 302  | 702479      | SS      | Ring, Flange (Inlet)  | 1-2  |
| 54      | 27488  | S           | Pin, Guide                            | 4       | 303  | 701240      | S       | Screw, HSH (M8x16)  | 0-7  |
| 64      | 763507 | CM          | Pin, Crosshead                        | 3       | 305  | 702481      | SS      | Plate, Blank (Inlet Port)                                   | 0-1  |
| 65      | 768892 | SZZ         | Rod, Plunger                          | 3       | 306  | 702485      | SS      | Plate, Blank (Discharge Port)                               | 0-1  |
| 69      | 126592 | STCP R      | Washer, Oil Seal                      | 3       | 307  | 703032      | SS      | Screw, HSH (M8x40)  | 7-14 |
| 70      | 43500  | NBR         | Seal, Oil, Crankcase - 80D            | 3       | 310  | 702360      | NBR     | Kit, Valve (Incls: 163, 164, 166, 167, 168, 172)            | 2    |
| 88      | 45675  | S           | Washer, Keyhole                       | 3       | 400  | 702480      | SS      | Pipe, Inlet (Weld Prep)                                     | 2    |
| 89      | 45879  | SS          | Spacer, Plunger                       | 3       | 401  | 702663      | NBR     | O-Ring, Inlet Flange - 90D                                  | 3-4  |
| 90      | 43552  | CC          | Plunger, Ceramic (M24x77)             | 3       | 402  | 702478      | SS      | Spacer, Face Seal (Inlet Flange)                            | 2    |
| 95      | 89651  | SS          | Stud, Retainer (M6x16)                | 3       | 403  | 702484      | SS      | Pipe, Discharge (Weld Prep)                                 | 1-2  |
| 96      | 43235  | PTFE        | Back-up Ring, Plunger Retainer        | 3       | 404  | 702664      | NBR     | O-Ring, Discharge Flange - 90D                              | 3-4  |
| 97      | 17399  | NBR         | O-Ring, Plunger Retainer - 80D        | 3       | 405  | 702482      | SS      | Spacer, Face Seal (Discharge Flange)                        | 1-2  |
| 98      | 44041  | SS          | Gasket, Plunger Retainer              | 3       | 407  | 702661      | SS      | Assembly, Inlet Flange (Incls: 302, 307, 400, 401, 402)     | 1-2  |
| 99      | 44031  | SS          | Retainer, Plunger (M6)                | 3       | 408  | 702662      | SS      | Assembly, Discharge Flange (Incls: 301, 307, 403, 404, 405) | 1-2  |
| 100     | 76807  | AL          | Retainer, seal (Anti-icing)           | 3       | 415  | 702671      | SS      | Assembly, Inlet Port Blank (Incls: 303, 305, 401)           | 1    |
| 106     | 703335 | SFTB        | Seal, LPS w/NIH-Spg                   | 3       | 416  | 702672      | SS      | Assembly, Discharge Port Blank (Incls: 303, 306, 404)       | 1    |
| 110     | 702457 | SS          | Plate, Seal Support                   | 1       | 417  | 704484      | —       | Assembly, seal retainer venting                             | 1    |
| 117     | 87951  | S           | Screw, HSH (M10x30)                   | 8       |      |             |         |   |      |

*Italics are optional items.* R Components comply with RoHS Directive. See Tech Bulletins 024, 036, 074, 083 and 095

MATERIAL CODES (Not Part of Part Number): ABS=ABS Plastic AL=Aluminum CC=Ceramic CM=ChromeMoly FCM=Forged Chrome-Moly NBR=Medium Nitrile (Buna-N) PTFE=Pure Polytetrafluoroethylene PVDF=Polyvinylidene Fluoride S=304SS SS=316SS SFTB=Special Blend Black SZZ=304SS/Zamak STCP=Steel/Chrome Plated STL=Steel STZP=Steel/Zinc Plated TNM=Special High Strength

### ⚠ CAUTIONS AND WARNINGS

All High-Pressure Systems require a primary pressure regulating device (i.e. regulator, unloader) and a secondary pressure relief device (i.e. pop-off valve, relief valve). Failure to install such relief devices could result in personal injury or damage to pump or property. Cat Pumps does not assume any liability or responsibility for the operation of a customer's high pressure system.

Read all CAUTIONS and WARNINGS before commencing service or operation of any high pressure system. The CAUTIONS and WARNINGS are included in each service manual and with each Accessory Data sheet. CAUTIONS and WARNINGS can also be viewed online at [www.catpumps.com/cautions-warnings](http://www.catpumps.com/cautions-warnings) or can be requested directly from Cat Pumps.

### WARRANTY

View the Limited Warranty on-line at [www.catpumps.com/warranty](http://www.catpumps.com/warranty).



### CAT PUMPS

1681 - 94th Lane N.E. Minneapolis, MN 55449-4324

Phone (763) 780-5440 · Fax (763) 780-2958 · e-mail: [techsupport@catpumps.com](mailto:techsupport@catpumps.com) · [www.catpumps.com](http://www.catpumps.com)