

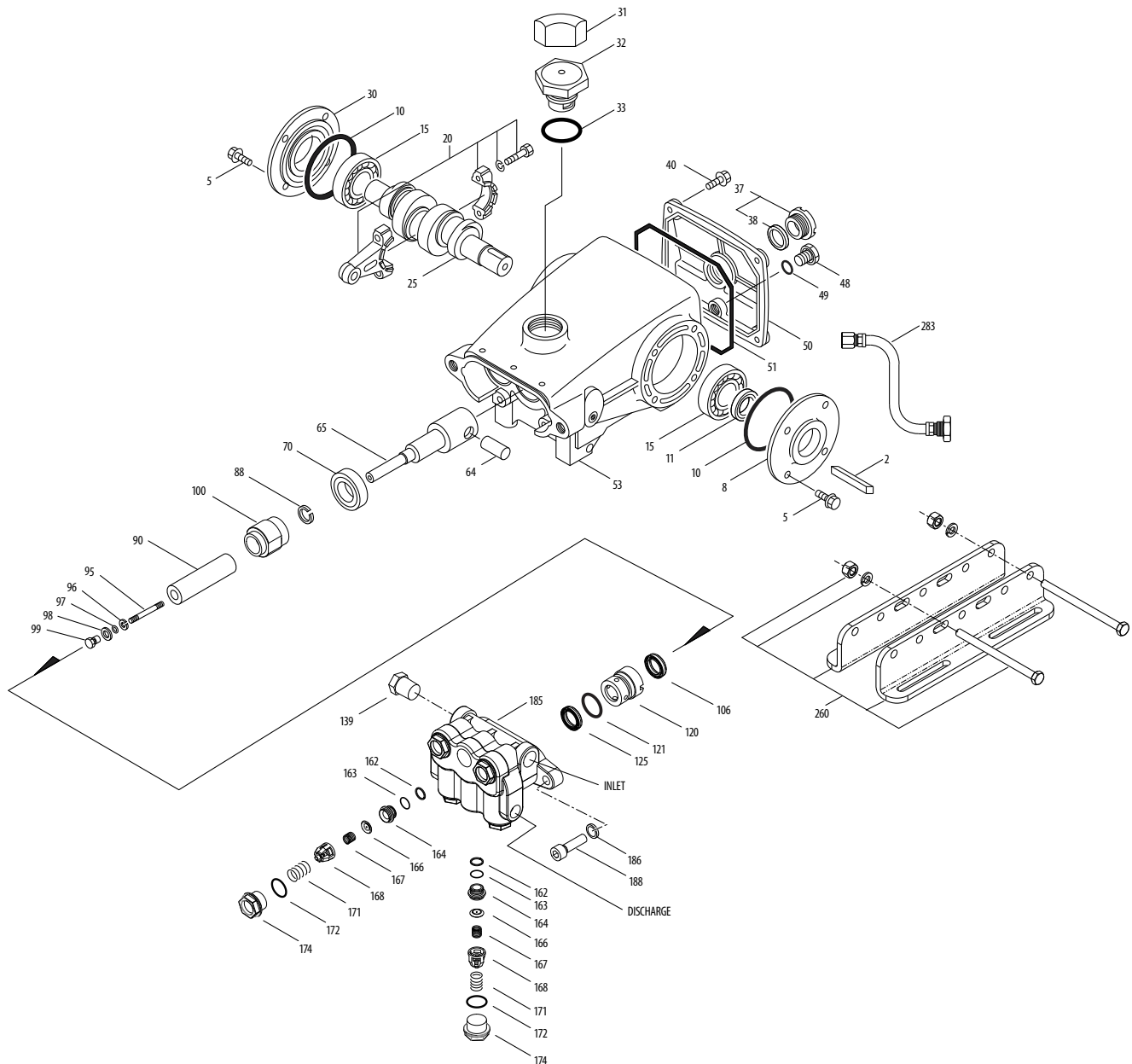
MODEL 351.C02



SPECIFICATIONS	U.S. Measure	Metric Measure
Flow	1.22 gpm	4.6 lpm
Pressure Range	400 to 1500 psi	28 to 103 bar
Max. RPM	450	450
*Inlet Pressure	300 to 570 psi	21 to 39 bar
Crankcase Capacity	18 oz.	0.551
Dimensions	11.73 x 10.0 x 5.24"	298 x 254 x 133mm
Weight	19.8 lbs.	9 kg

* Temperature and pressure must be maintained to keep incoming CO₂ in a liquid state.

EXPLODED VIEW



PARTS LIST

ITEM	PN	MATL	DESCRIPTION	QTY	ITEM	PN	MATL	DESCRIPTION	QTY
2	30057	STL	Key (M6x6x25)	1	100	701765	SS	Retainer, Seal	3
5	92538	S	Screw, HHC Sems (M6 x 16)	8	106	701763	SFTA	Seal, LPS w/NIH-Spg	3
8	43344	AL	Covering, Bearing	2	120	45680	SS	Case, Seal	3
10	43343	NBR	O-Ring, Bearing Cover - 70D	2	121	14200	NBR	O-Ring, Seal Case - 70D	3
11	43222	NBR	Seal, Oil, Crankshaft	2	125	701764	SFTA	Seal, HPS w/NIH-Spg	3
15	14480	STL	Bearing, Ball	2	139	45156	SS	Plug, Inlet (1/2"NPT(M))	1
20	45883	HS	Rod, Connecting Assy	3	162	48361	D	Back-up-Ring, Seat	6
25	43838	FCM	Crankshaft, Single End (M12)	1	163	43358	NBR	O-Ring, Seat - 70D	6
31	828710	PE	Protector, Oil Cap w/Polyurethane Gasket	1	164	44128	SS	Seat	6
32	43211	ABS	Cap, Oil Filler	1	166	44057	SS	Valve	6
33	14177	NBR	O-Ring, Oil Filler Cap - 70D	1	167	44056	SS	Spring	6
37	92241	—	Gauge, Oil, Bubble w/Gasket	1	168	44565	PVDF	Retainer, Spring	6
38	44428	NBR	Gasket, Flat, Oil Gauge	1	171	44832	S	Spring, Coil	3
40	92542	S	Screw, HHC Sems (M6 x 20)	4	172	17615	NBR	O-Ring, Valve Plug - 75D	6
48	25625	STCP	Plug, Drain (1/4" x 19BSP)	1	174	49296	SS	Plug, Valve	6
49	23170	NBR	O-Ring, Drain Plug - 70D	1	185	45151	SS	Head, Manifold	1
50	48772	AL	Cover, Rear	1	186	15847	S	Lockwasher (M10)	2
51	48773	NBR	O-Ring, Rear Cover - 70D	1	188	87950	S	Screw, HSH Sems (M10 x 35)	2
53	48769	AL	Crankcase	1	255	30243	STZP	Mount, Direct	1
64	43351	CM	Pin, Crosshead	3	260	30611	STZP R	Mount, Rail Assembly	1
65	45256	SSZZ	Rod, Plunger	3	275	30944	STL	Hub,"B" (35mm w/keyway)	1
70	43228	NBR	Seal, Oil, Crankcase	3	283	34334	—	Kit, Oil Drain (3/8" x 48")	1
88	45697	S	Washer, Keyhole (M18 x 10)	3	300	76152	NBR *	Kit, Seal (Incls: 97, 106, 121, 125)	1
90	43367	CC	Plunger (M20 x 72)	3	310	31152	NBR	Kit, Valve Preassembled (Incls:162-164, 166-168, 172)	2
95	89653	SS	Stud, Plunger (M6 x 58)	3	—	6107	—	Oil, Bottle (21 oz.) ISO-68 Hydraulic (Fill to specified crankcase capacity prior to start-up)	1
96	43235	PTFE	Back-up Ring, Plunger Retainer	3					
97	17399	NBR	O-Ring, Plunger Retainer - 80D	3					
98	44041	SS	Gasket, Plunger Retainer	3					
99	44031	SS	Retainer, Plunger	3					

⚠ CAUTIONS AND WARNINGS

All High-Pressure Systems require a primary pressure regulating device (i.e. regulator, unloader) and a secondary pressure relief device (i.e. pop-off valve, relief valve). Failure to install such relief devices could result in personal injury or damage to pump or property. Cat Pumps does not assume any liability or responsibility for the operation of a customer's high pressure system.

Read all CAUTIONS and WARNINGS before commencing service or operation of any high pressure system. The CAUTIONS and WARNINGS are included in each service manual and with each Accessory Data sheet. CAUTIONS and WARNINGS can also be viewed online at www.catpumps.com/cautions-warnings or can be requested directly from Cat Pumps.

WARRANTY

View the Limited Warranty on-line at www.catpumps.com/warranty.



CAT PUMPS

1681 - 94th Lane N.E. Minneapolis, MN 55449-4324

Phone (763) 780-5440 · Fax (763) 780-2958 · e-mail: techsupport@catpumps.com · www.catpumps.com