

MODEL 3520CM.CO₂



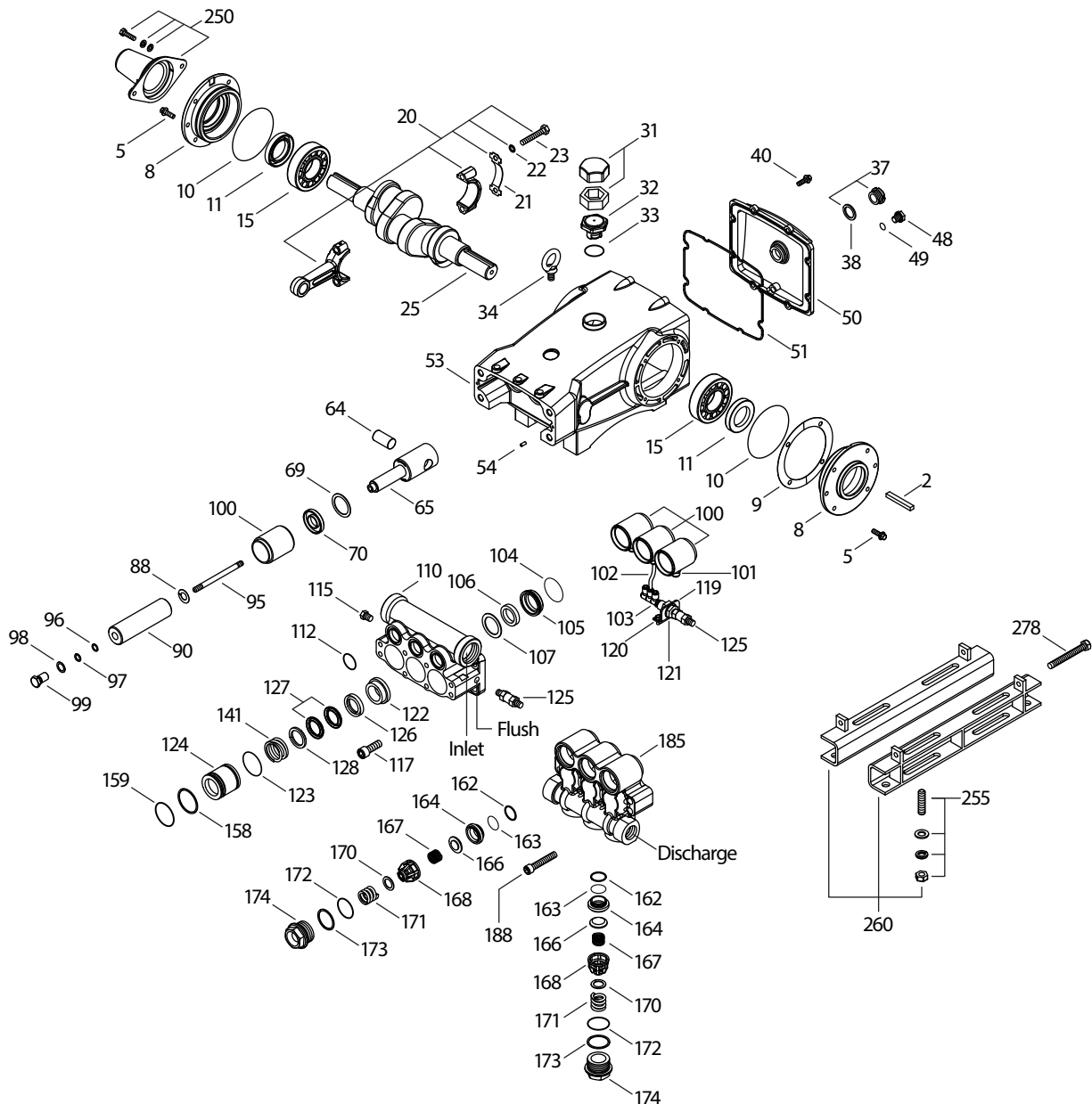
SPECIFICATIONS	U.S. Measure	Metric Measure
Flow	11.4 gpm	43.1 lpm
Pressure Range	400 to 2000 psi	27.5 to 138 bar
Pump RPM*	450	450
Inlet Pressure Range**	300 to 400 psi	21 to 27.5 bar
Above 130°F call Cat Pumps for inlet conditions and elastomer recommendations.		
Bore	1.260"	32 mm
Stroke	1.890"	48 mm
Crankcase Capacity	4.2 qts.	4 l

SPECIFICATIONS	U.S. Measure	Metric Measure
Inlet Ports (2)	1 1/2" NPT(F)	1 1/2" NPT(F)
Flush Ports (2)	1/4" NPT(F)	1/4" NPT(F)
Discharge Ports (2)	1" NPT(F)	1" NPT(F)
Shaft Diameter	1.378"	35 mm
Pulley Mounting	Either Side	Either Side
Weight	139 lbs.	63 kg
Dimensions	23.86 x 18.11 x 9.72"	606 x 460 x 247 mm

* Pump minimum is 100 RPM.

** Temperature and pressure must be maintained to keep incoming CO₂ in a liquid state.

EXPLODED VIEW



(Parts List on Reverse Side)

November 2017

PARTS LIST

ITEM	PN	MATL	DESCRIPTION	QTY
2	34021	STL	Key (M10x8x70)	1
5	125753	S	Screw, HH Sems (M8x25)	8
8	44542	AL	Covering, Bearing (See Tech Bulletin 118)	2
9	815279	FBR	Shim, Split 2-Pc	0-2
10	12398	NBR	O-Ring, Bearing Cover - 70D	2
11	13296	NBR	Seal, Oil, Crankshaft	2
15	29326	STL	Bearing, Roller	2
20	761467	TNM	Assembly, Connecting Rod (Incls: 21,22,23)	3
21	126749	STCP R	Washer, Locking (M10)	3
22	126593	STCP R	Shim, Washer (M10.5x1.5)	6
23	122045	STZP	Screw, HH (M10x55)	6
25	29325	FCM	Crankshaft, Dual End (M48)	1
31	828710	PE	Protector, Oil Cap w/Polyurethane Gasket	1
32	43211	ABS	Cap, Oil Filler	1
33	14177	NBR	O-Ring, Oil Filler Cap - 70D	1
34	126743	STCP R	Bolt, Eye (M12x1.75) (For Lifting Pump Only)	1
37	92241	—	Gauge, Oil, Bubble w/Gasket	1
38	44428	NBR	Gasket, Flat, Oil Gauge	1
40	125753	S	Screw, HH Sems (M8x25)	8
48	25625	STCP	Plug, Drain (1/4"x19BSP)	1
49	23170	NBR	O-Ring, Drain Plug - 70D	1
50	45936	AL	Cover, Rear (See Tech Bulletin 118)	1
51	16612	NBR	O-Ring, Rear Cover - 70D	1
53	44487	AL	Crankcase Assy (Incls: 34,54) (See Tech Bulletin 118)	1
54	27488	S	Pin, Guide	2
64	763864	CM	Pin, Crosshead (w/flats)	3
65	765116	SSZZ	Rod, Plunger	3
69	126587	STCP R	Washer, Oil Seal	3
70	100488	NBR	Seal, Oil, Crankcase	3
88	45676	S	Washer, Keyhole	3
90	43957	CC	Plunger (M32x145)	3
95	89778	SS	Stud, Plunger Retainer (M10 x 135)	3
96	20189	PTFE	Back-up-Ring, Plunger Retainer	3
97	11345	NBR	O-Ring, Plunger Retainer - 70D	3
98	44085	SS	Gasket, Plunger Retainer	3
99	44084	SS	Retainer, Plunger (M10)	3
100	999324	AL	Retainer, Seal	3
101	999490	D	Adapter, 1/4"	3
102	999492	NY	Tubing, 1/4"	3
103	999491	PLM	Manifold [3"x1/4"NPT(M)]	1
104	43875	NBR	O-Ring, Inlet Adapter - 70D	3
105	49741	BB	Adapter, Inlet	3

ITEM	PN	MATL	DESCRIPTION	QTY
106	702285	TFDA	Seal, LPS, w/S-Spg	3
107	43962	S	Washer	3
110	49464C	BBCP R	Manifold, Inlet, Flushed	1
112	11379	NBR	O-Ring, Inlet Manifold - 70D	3
115	22177	BBCP	Plug, HH [1/4"NPT(M)]	1
117	44585	S	Screw, HSH (M14x40)	4
119	34347	STZP	Bracket	1
120	990776	STZP R	Screw, HHC (1/4"- 20 x 1/2")	2
121	34338	BB	Union [1/4"NPT(M)]	1
122	49744	BB	Spacer (See Tech Bulletin 114)	3
123	12391	NBR	O-Ring, V-Packing Cylinder - 70D	3
124	49742	BB	Cylinder, V-Packing (See Tech Bulletin 114)	3
125	33937	SS	Valve, Check [1/4"NPT(M)]	2
126	43963	BB	Adapter, Female	3
127	44608	STG	V-Packing	6
128	43965	BB	Adapter, Male	3
141	49743	SS	Spring, Large Coil	3
158	48362	D	Back-up-Ring, V-Packing Spacer	3
159	48860	NBR	O-Ring, V-Packing Spacer - 90D	3
162	48363	D	Back-up-Ring, Seat	6
163	26142	NBR	O-Ring, Seat - 80D	6
164	44727	S	Seat	6
166	43932	S	Valve	6
167	44109	SS	Spring	6
168	44728	PVDF	Retainer, Spring	6
170	44729	SS	Washer, Spring	6
171	44644	SS	Spring, Coil	6
172	89827	NBR	O-Ring, Valve Plug - 90D	6
173	48364	D	Back-up-Ring, Valve Plug	6
174	46444	FBB	Plug, Valve	6
185	49465	BBCP R	Manifold, Discharge	1
188	89981	S	Screw, HSH (M12x70)	8
250	44516	NY	Protector, Shaft	1
255	34018	STZP	Mount, Direct	1
260	92674	STZP R	Mount, Rail Assembly (Incls: 34018)	1
278	80540	STZP	Screw, HH (M12x100) (Rail Adjusting Screw)	2
290	6124	—	Gasket, Liquid (3 oz.)	1
300	76114	NBR*	Kit, Seal (Incls: 97, 106, 112, 123, 127, 158, 159)	1
310	34235	NBR	Kit, Valve Preassembled (Incls: 162-164, 166-168, 170, 172, 173)	2
—	6100	—	Oil, Case (12-21 oz. Bottles) ISO-68 Hydraulic (Fill to specified crankcase capacity prior to start-up)	1

*Review individual parts in each kit for material code identification. *Italics are optional items.* R Components comply with RoHS Directive.

See Tech Bulletins 003, 024, 036, 074, 083, 084, 087, 095, 114 and 118

MATERIAL CODES (Not Part of Part Number): ABS=ABS Plastic AL=Aluminum BB=Brass BBCP=Brass/Chrome Plated CC=Ceramic CM=ChromeMoly D=Acetal FBB=Forged Brass FBR=Fiber FCM=Forged Chrome-Moly NBR=Medium Nitrile (Buna-N) NBR5=Buna,Silicone Free NY=Nylon PLM=Unspecified Poly PTFE=Pure Polytetrafluoroethylene PVDF=Polyvinylidene Fluoride PE=Polyethylene S=304SS SS=316SS SSZZ=316SS/Zamak STCP=Steel/Chrome Plated STG=Special Blend PTFE White STL=Steel STZP=Steel/Zinc Plated TFDA=PTFE FDA TNM=Special High Strength

CAUTIONS AND WARNINGS

All High-Pressure Systems require a primary pressure regulating device (i.e. regulator, unloader) and a secondary pressure relief device (i.e. pop-off valve, relief valve). Failure to install such relief devices could result in personal injury or damage to pump or property. Cat Pumps does not assume any liability or responsibility for the operation of a customer's high pressure system.

Read all CAUTIONS and WARNINGS before commencing service or operation of any high pressure system. The CAUTIONS and WARNINGS are included in each service manual and with each Accessory Data sheet. CAUTIONS and WARNINGS can also be viewed online at www.catpumps.com/cautions-warnings or can be requested directly from Cat Pumps.

WARRANTY

View the Limited Warranty on-line at www.catpumps.com/warranty.



CAT PUMPS

1681 - 94th Lane N.E. Minneapolis, MN 55449-4324

Phone (763) 780-5440 · Fax (763) 780-2958 · e-mail: techsupport@catpumps.com · www.catpumps.com