

MODEL 6861KM.CO₂



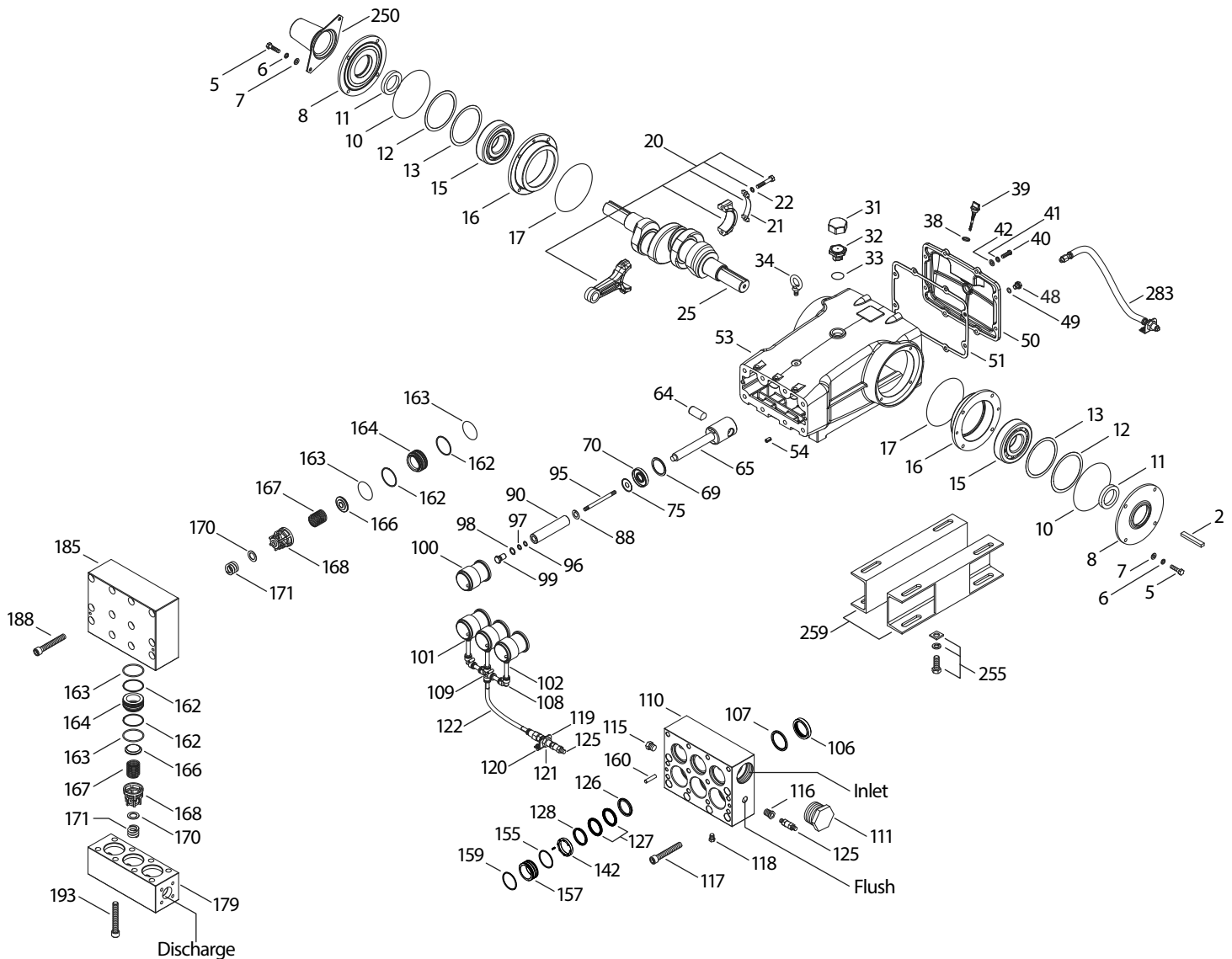
SPECIFICATIONS	U.S. Measure	Metric Measure
Flow	50.0 gpm	189.2 lpm
Pressure Range	400 to 1200 psi	27.6 to 83 bar
Max. RPM*	450	450
Inlet Pressure Range**	300 to 800 psi	21 to 55 bar
Min. Liquid Temperature	-20°F	-29°C
Bore	2.165"	55 mm
Stroke	2.579"	65.5 mm
Crankcase Capacity	10 Qts.	9.46 l

SPECIFICATIONS	U.S. Measure	Metric Measure
Inlet Ports (2)	2-1/2" NPT(F)	2-1/2" NPT(F)
Flush Ports (2)	1/2" NPT(F)	1/2" NPT(F)
Discharge Ports (2)	1-1/4" NPT(F)	1-1/4" NPT(F)
Shaft Diameter	1.772"	45 mm
Pulley Mounting	Either Side	Either Side
Weight	355 lbs.	161 kg
Dimensions	29.66 x 24.02 x 12.00"	753 x 610 x 305 mm

*Pump minimum is 100 RPM.

** Temperature and pressure must be maintained to keep incoming CO₂ in a liquid state.

EXPLODED VIEW



PARTS LIST

ITEM PN	MATL	DESCRIPTION	QTY	ITEM PN	MATL	DESCRIPTION	QTY
2	43048	STL Key (M14x9x90)	1	106	703299	SFTB Seal, LPS, w/SS-Spg	3
5	89728	S Screw, HH (M10x40)	8	107	46167	SS Spacer, LPS	3
6	15847	S Lockwasher (M10)	8	108	703145	D Elbow (12MM)	2
7	19934	S Washer, Flat (M10)	8	109	703144	D Cross, Barb (12MM)	1
8	29443	AL Cover, Bearing, Outer (See Tech Bulletin 118)	2	110	701343	SS Manifold, Inlet - Block-Style, Flushed	1
10	29444	NBR O-Ring, Bearing Cover - 70D	2	111	701353	SS Plug, Inlet Manifold [2-1/2"NPT(M)]	1
11	11443	NBR Seal, Oil, Crankshaft - 70D	2	115	45156	SS Plug, Hex Head [1/2" NPT(M)]	
12	126594	STCP R Washer, Shim (M120x0.3)	0-2	116	998032	SS Bushing [1/2"NPT(M) x 1/4" NPT(M)]	1
13	126595	STCP R Washer, Shim (M120x0.5)	0-2	117	89694	S Screw, HSH (M16x110)	6
15	29441	STL Bearing, Roller	2	118	701077	SS Plug [1/4" NPT(M)]	3
16	29442	STL Cover, Bearing, Inner	2	119	34347	STZP Bracket	1
17	29444	NBR O-Ring, Bearing Cover - 70D	2	120	990776	STZP R Screw, HHC (1/4" - 20 x 1/2")	2
20	766612	BBHS Assembly, Connecting Rod (Incls: 21, 22)	3	121	34338	BB Union, [1/4"NPT(M)]	1
21	126560	STCP R Washer, Locking	3	122	703147	BBNP Adapter, Tubing [1/2"NPT(F) x 12MM]	1
22	126593	STCP R Washer, Shim (M10.5x1.5)	6	125	33937	SS Valve, Check [1/4"NPT(M)]	2
25	29440	FCM Crankshaft, Dual Shaft	1	126	45771	SS Adapter, Female	3
31	828710	— Protector, Oil Cap w/Foam Gasket	1	127	44764	STG V-Packing	6
32	43211	ABS Cap, Oil Filler	1	128	45772	SS Adapter, Male	3
33	14177	NBR O-Ring, Filler Cap - 70D	1	142	45383	SS Spacer w/Coil Springs	3
34	126743	STCP R Bolt, Eye (M12) (For Lifting Pump Only)	1	155	18178	NBR O-Ring, V-Packing Spacer, - 80D	3
38	129343	RBR Gasket, Flat Flex	1	157	45321	SS Spacer, V-Packing w/Coil Springs	3
39	27769	ABS Stick, Dip	1	159	18178	NBR O-Ring, V-Packing Spacer - 80D	3
40	89627	S Screw, HH (M10x30)	8	160	44756	S Pin, Guide	2
41	15847	S Lockwasher (M10)	8	162	23116	PTFE Backup-Ring, Seat	12
42	19934	S Washer, Flat (M10)	8	163	12392	NBR O-Ring, Seat - 70D	12
48	25625	STCP Plug, Drain (1/4"x19BSP)	1	164	46173	SS Seat	6
49	23170	NBR O-Ring, Drain Plug - 70D	1	166	44774	SS Valve	6
50	29438	AL Cover, Rear (See Tech Bulletin 118)	1	167	44773	SS Spring	6
51	129386	NBR Gasket, Rear Cover	1	168	44775	PVDF Retainer, Spring	6
53	45303	AL Crankcase (Incls: 34, 54) (See Tech Bulletin 118)	1	170	44776	SS Washer, Retainer	6
54	43282	S Pin, Guide	2	171	701354	SS Spring, Coil Retainer	6
64	769481	CM Pin, Crosshead	3	179	46176	SS Manifold, Discharge - Block Style	1
65	76384	SSZZ Rod, Plunger	3	185	46171	SS Manifold, Valve - Block-Style	1
69	126588	STCP R Washer, Oil Seal	3	188	89694	S Screw, HSH (M16x110), lower	12
70	29454	NBR Seal, Oil Crankcase - 80D	3	193	89694	S Screw, HSH (M16x110), Upper	8
88	45677	SS Washer, Keyhole (M16)	3	250	29445	AL Protector, Shaft (See Tech Bulletin 118)	1
90	44749	CC Plunger (M55x185)	3	255	33243	STZP Kit, Mount (Included w/Pump)	2
95	44748	SS Stud, Plunger Retainer (M14x147)	3	259	126604	STCP R Rail, Box (Included w/Pump)	2
96	20214	PTFE Back-up-Ring, Plunger Retainer	3	275	990014	STL Hub, "B", M45 w/Keyway [See Tech Bulletin 003]	1
97	17616	NBR O-Ring, Plunger Retainer - 80D	3	283	34314	— Kit, Oil Drain (3/8" x 48")	1
98	44751	SS Gasket, Plunger Retainer	3	290	6124	— Gasket, Liquid (3 oz.)	1
99	44750	SS Retainer, Plunger (M14)	3	300	703134	NBR Kit, Seal (Incls: 97, 106, 127, 155, 159)	1
100	703128	D Retainer, Seal	3	310	34105	NBR Kit, Valve (Incls: 162-164, 166, 167, 168, 170, 171)	2
101	703146	BBNP Adapter, Tubing [3/8"NPT(M) x 12MM]	3	—	6105	— Oil, Twin Pack (Two 2.5 Gal) ISO-68 Hydraulic (Fill to specified crankcase capacity prior to start-up)	1
102	703142	NY Tubing (12MM)	6	—	6119	— Lubricant, Antiseize (2 oz.) (See Tech Bulletin 095)	1
103	998550	NY Nipple [1/2" NPT(M) x 1/4" NPT(M)]	1				

R Components comply with RoHS Directive.

See Tech Bulletins 024, 036, 074, 083, 084, 087, 095 and 118

MATERIAL CODES (Not Part of Part Number): ABS=ABS Plastic AL=Aluminum BBHS=Brass/High Strength BBNP=Brass/Nickel Plated BB=Brass CC=Ceramic
 CM=ChromeMoly D=Acetal FCM=Forged Chrome-Moly NBR=Medium Nitrile (Buna-N) NY=Nylon PTFE=Pure Polytetrafluoroethylene PVDF=Polyvinylidene Fluoride
 RBR=Rubber S=304SS SS=316SS SFTB=Special Blend Black SSZZ=316SSZamak STCP=Steel/Chrome Plated STG=Special Blend PTFE White
 STL=Steel STZP=Steel/Zinc Plated

⚠ CAUTIONS AND WARNINGS

All High-Pressure Systems require a primary pressure regulating device (i.e. regulator, unloader) and a secondary pressure relief device (i.e. pop-off valve, relief valve). Failure to install such relief devices could result in personal injury or damage to pump or property. Cat Pumps does not assume any liability or responsibility for the operation of a customer's high pressure system.

Read all CAUTIONS and WARNINGS before commencing service or operation of any high pressure system. The CAUTIONS and WARNINGS are included in each service manual and with each Accessory Data sheet. CAUTIONS and WARNINGS can also be viewed online at www.catpumps.com/cautions-warnings or can be requested directly from Cat Pumps.

WARRANTY

View the Limited Warranty on-line at www.catpumps.com/warranty.



CAT PUMPS

1681 - 94th Lane N.E. Minneapolis, MN 55449-4324

Phone (763) 780-5440 · Fax (763) 780-2958 · e-mail: techsupport@catpumps.com · www.catpumps.com