

# DATA SHEET

## 8400 SERIES DUAL STRIKE GUN



**Standard Models: 8400.060, 8400.120, 8400.160, 8400.170, 8400.300, 8400.400**



### FEATURES

- Straight stream delivers penetrating stream coupled with fine, cooling mist.
- Fog stream creates excellent foam expansion for maximum coverage.
- Quick conversion from straight stream to fog stream coverage by rotating lance.

### COMMON SPECIFICATIONS

	U.S.	Metric
Maximum Pressure	1500 psi	103 bar
Maximum Temperatures	140° F	60° C
Inlet Fitting	3/4" NPT(F)	3/4" NPT(F)
Weight	4.8 lbs	2.17 kg
Dimensions	13.25 x 2.0 x 7.25"	336 x 51 x 184 mm

### SELECTION

Ensure gun matches system flow, pressure, temperature and functional requirements for your application.

### INSTALLATION

Plumb inlet port to high pressure discharge hose. Ensure system has appropriate regulating device to avoid pressure spike when gun is in closed position. Severe damage can occur without this device.

### OPERATION

Flow through the gun occurs when squeezing the trigger while either nozzle is selected. The Dual Strike gun features a straight and fog stream setting. To select a nozzle, align line on arrow and barrel, then pull the trigger. To change the nozzle setting, release the trigger, stopping flow, and rotate to other setting.

### SPECIFICATIONS

	U.S. Measure	Metric Measure
<b>8400.060</b>		
Maximum Flow	3.5 gpm*	13.25 lpm
<b>8400.120</b>		
Maximum Flow	7.0 gpm*	26.50 lpm
<b>8400.160</b>		
Maximum Flow	9.0 gpm*	34.07 lpm
<b>8400.170</b>		
Maximum Flow	10.0 gpm*	37.85 lpm
<b>8400.300</b>		
Maximum Flow	17.0 gpm*	64.35 lpm
<b>8400.400</b>		
Maximum Flow	21.0 gpm*	79.49 lpm

\*Flow ratings based on system pressure of 1500 psi. (103 bar)

### TROUBLESHOOTING

Liquid leaking from discharge of gun	<ul style="list-style-type: none"> <li>• Foreign material lodged between ball and seat.</li> <li>• Clean, examine parts for any damage and replace as needed.</li> <li>• Ball or seat pitted or worn. Replace as needed.</li> </ul>
Liquid leaking from trigger area	<ul style="list-style-type: none"> <li>• Examine O-ring on actuator rod and replace as needed.</li> </ul>
Liquid leaking from rear of gun or plug	<ul style="list-style-type: none"> <li>• Re-Loctite plug.</li> </ul>
Loss of pressure	<ul style="list-style-type: none"> <li>• Check nozzle for foreign material lodged in nozzle or worn nozzle and replace as needed.</li> </ul>

**⚠ WARNING Severe injury can occur with high pressure spray. Do not allow spray to contact any part of body.**

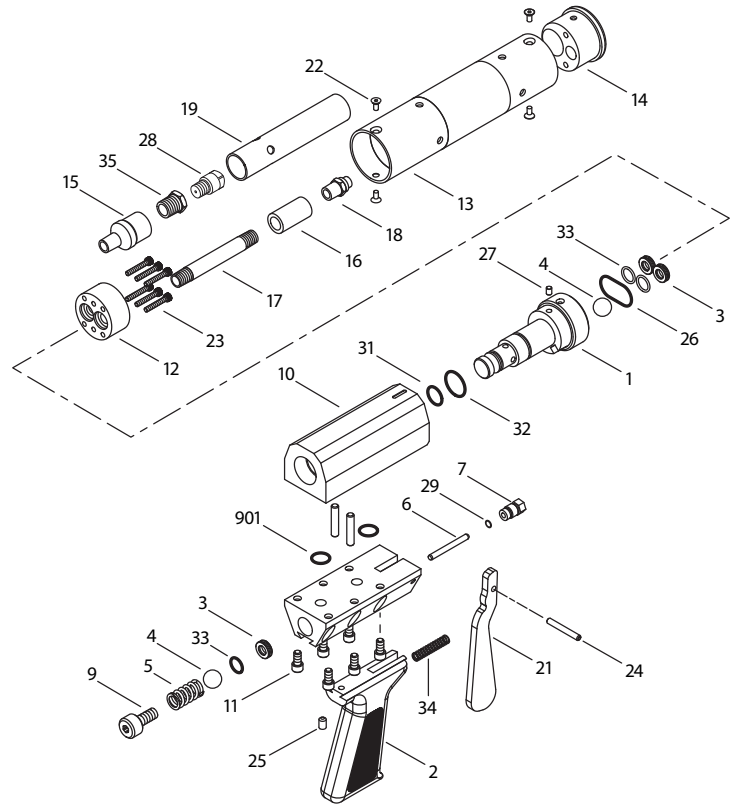
## PARTS LIST

ITEM	PART NO.	MATL	DESCRIPTION	MODEL USED	QTY
1	76659	AL	Barrel, Dual	All	1
2	76751	AL	Handle, Pistol	All	1
3	33783	S	Seat	All	3
4	997561	SSSS	Ball, (.625")	All	2
5	32846	S	Spring, Ball	All	1
6	76806	SS	Rod, Actuator	All	1
7	76804	BB	Guide, Rod	All	1
8	76833	AL	Body, Lower	All	1
9	76855	BB	Guide, Spring	All	1
10	76802	AL	Body, Upper	All	1
11	76837	S	Screw, HSH (1/4-20 x .5)	All	6
12	76661	AL	Retainer, Seat	All	1
13	76732	AL	Tube, Outer	All	1
14	76699	PVC	Protector Nozzle	All	1
15	997563	S	Fitting, Aspirator	All	1
16	76703	S	Coupling, [1/4 NPT(F)]	.060/160 .300/400	1
	76705	S	Reducer Coupling, (1/4 x 1/8)	.120/170	1
17	76702	S	Nipple, [1/4 NPT(M) x 4]	All	1
18	—	SSSS	Nozzle (See Nozzle Chart)	All	1
19	76761	S	Tube, Aspirator	All	1
20	76694	STL	Pin, Dowel	All	2
21	76726	STCP	Trigger	All	1
22	76777	S	Screw, FH (8-32 x .375)	All	4
23	76697	S	Screw, HSH (8-32 x 1.00)	All	6
24	76693	S	Pin, Trigger	All	1
25	76776	S	Screw, Set (1/4-20, 3/8")	All	1
26	76662	NBR	O-ring, Barrel	All	1
27	76778	S	Pin, Stop Gun	All	1
28	—	BB	Nozzle, Aspirator (See Nozzle Chart)	All	1
29	76773	NBR	O-ring, Rod, 70D	All	1
30	76774	NBR	O-ring, Body, 90D	All	2
31	34173	NBR	O-ring, Body	All	1
32	43278	NBR	O-ring, Body,	All	1
33	33564	NBR	O-ring, Seat, 90D	All	3
34	76696	SS	Spring, Trigger	All	1
35	992601	BB	Reducer Bushing, (3/8 x 1/8)	.060	1
	34211	BB	Reducer Bushing, (3/8 x 1/4)	.120/170	1

### MATERIAL CODES (Not Part Of Part Number)

AL=Aluminum, BB=Brass NBR=Medium Nitrile (Buna-N) PVC=Polyvinyl Chloride  
S=304SS SS=316SS SSSS=440SS, STCP=Steel Chrome Plated STL=Steel

## EXPLODED VIEW



## NOZZLE CHART

ITEM	PART NO.	DESCRIPTION	MODEL USED	QTY
18	76326	Nozzle (#6, 1/4")	8400.060	1
18	711200.8	Nozzle (#12, 1/8")	8400.120	1
18	711600.4	Nozzle (#16, 1/4")	8400.160	1
18	711507.8	Nozzle (#17, 1/8")	8400.170	1
18	723000.4	Nozzle (#30, 1/4")	8400.300	1
18	724000.4	Nozzle (#40, 1/4")	8400.400	1
28	998620.020	Nozzle, Aspirator (#6, 1/8")	8400.060	1
28	998640.120	Nozzle, Aspirator (#12, 1/4")	8400.120	1
28	998650.160	Nozzle, Aspirator (#16, 3/8")	8400.160	1
28	998640.170	Nozzle, Aspirator (#17, 1/4")	8400.170	1
28	998650.300	Nozzle, Aspirator (#30, 3/8")	8400.300	1
28	998650.400	Nozzle, Aspirator (#40, 3/8")	8400.400	1

## CAUTIONS AND WARNINGS

All High Pressure Systems require a primary pressure regulating device (i.e. regulator, unloader) and a secondary pressure relief device (i.e. pop-off valve, relief valve). Failure to install such relief devices could result in personal injury or damage to pump or property. Cat Pumps does not assume any liability or responsibility for the operation of a customer's high pressure system.

Read all CAUTIONS and WARNINGS before commencing service or operation of any high pressure system. The CAUTIONS and WARNINGS are included in each service manual and with each Accessory Data sheet. CAUTIONS and WARNINGS can also be viewed online at [www.catpumps.com/cautions-warnings](http://www.catpumps.com/cautions-warnings) or can be requested directly from Cat Pumps.

## WARRANTY

View the Limited Warranty on-line at [www.catpumps.com/warranty](http://www.catpumps.com/warranty).



### CAT PUMPS

1681 - 94TH LANE N.E. MINNEAPOLIS, MN 55449-4324  
PHONE (763) 780-5440 — FAX (763) 780-2958  
e-mail: [techsupport@catpumps.com](mailto:techsupport@catpumps.com)  
[www.catpumps.com](http://www.catpumps.com)