

DATA SHEET

VERTICAL MULTISTAGE PUMP



**304 Stainless
Steel /Cast Iron
Model:**

8C45K5S14T3F



SPECIFICATIONS

Size

Suction 300# ANSI raised face 3.00"

Discharge 300# ANSI raised face 3.00"

HP 40 HP

RPM 3450 RPM

Liquid handled

Type of liquid Clean water (for other clean liquids, consult factory)

Temperature 5° to +248°F (-15° to 120°C)

Working pressure 370 psi (25.5 bar) max.

Materials

Impeller AISI 304

Intermediate casing AISI 304

Bottom casing Cast Iron

Casing cover Cast Iron

Outer casing AISI 304

Shaft AISI 316L

Liner ring PTFE/AISI 316

Motor bracket Cast Iron

Base Cast Iron

Lower Pump Bearings Tungsten Carbide

Mechanical seal Silicon/Carbide/Carbon/FPM

Motor

Type NEMA 324TSC frame, TEFC

Speed 60 Hz, 3450 RPM (2 poles)

Three Phase 208-230/460V

Direction of Rotation Clockwise when viewed from motor end

Test standard ISO 9906 annex A

Weight

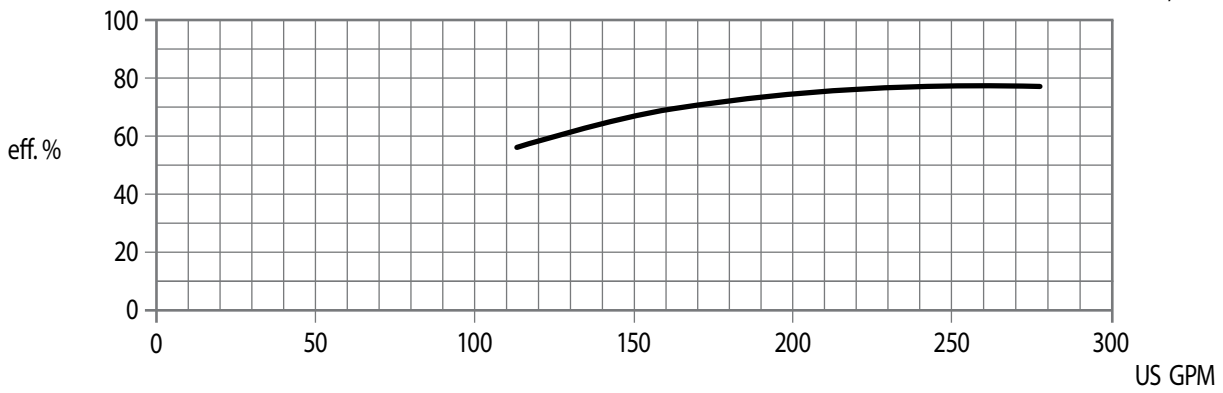
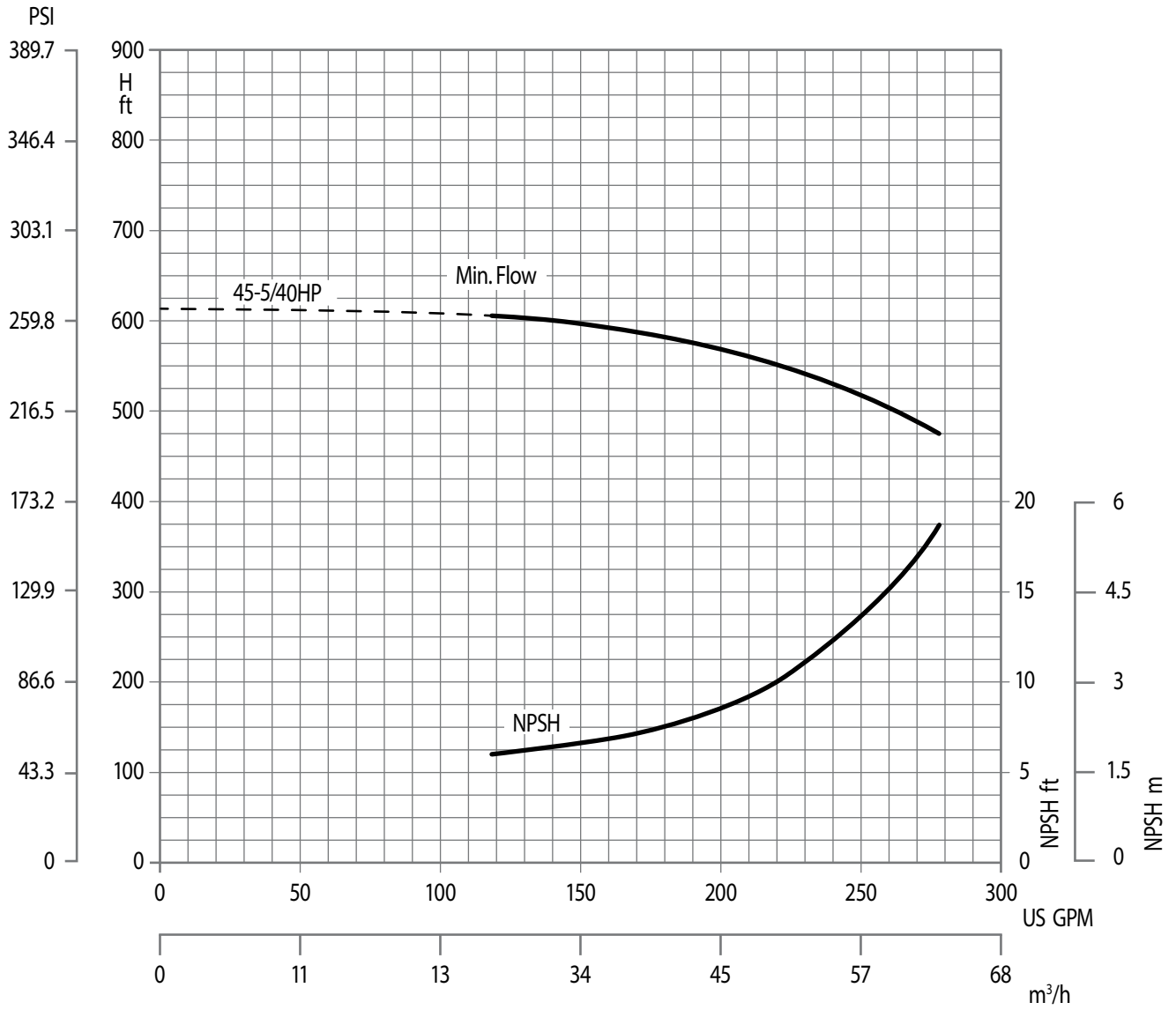
Pump 260 lbs

Motor 422 lbs

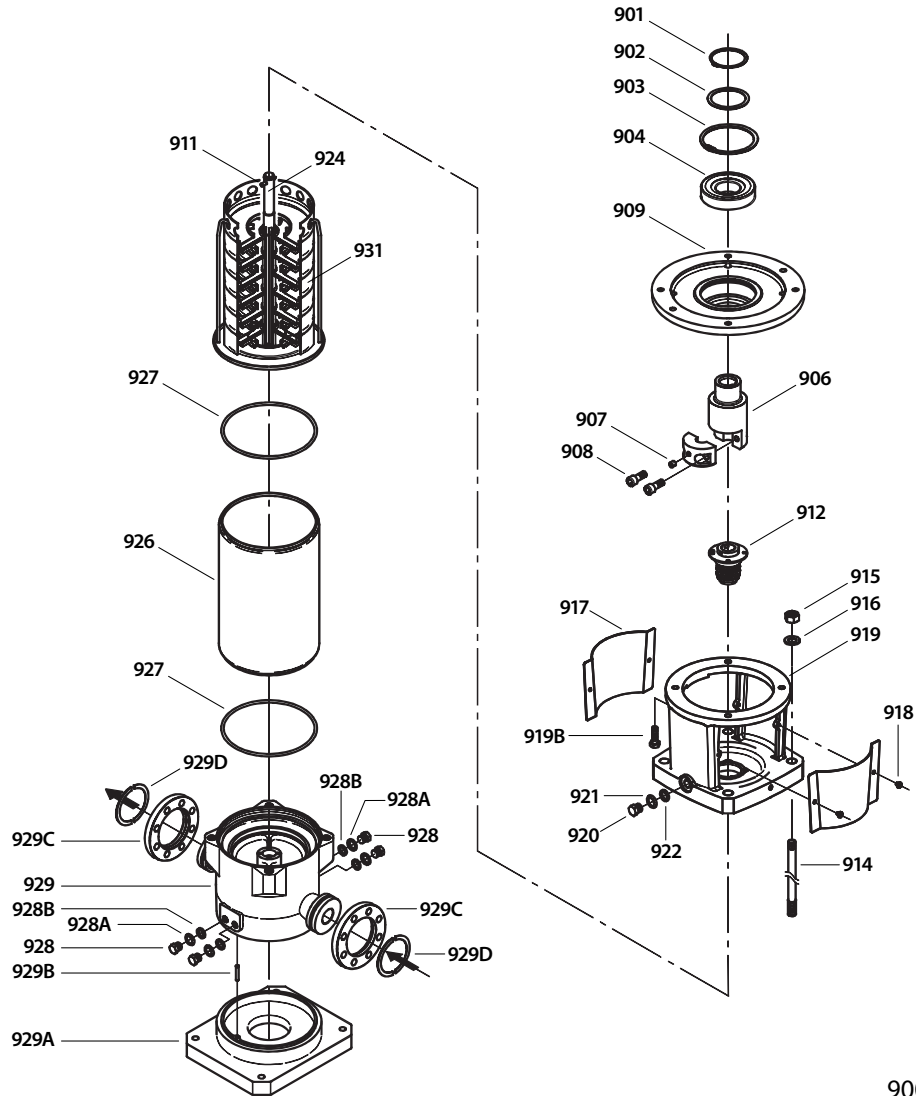
NOTE: See PN 99SVM001 for complete operating instructions, installation and maintenance manual information.

PERFORMANCE CURVE – 3450 RPM

270 gpm, 610 Ft/Hd



EXPLODED VIEW



900 Motor not Shown

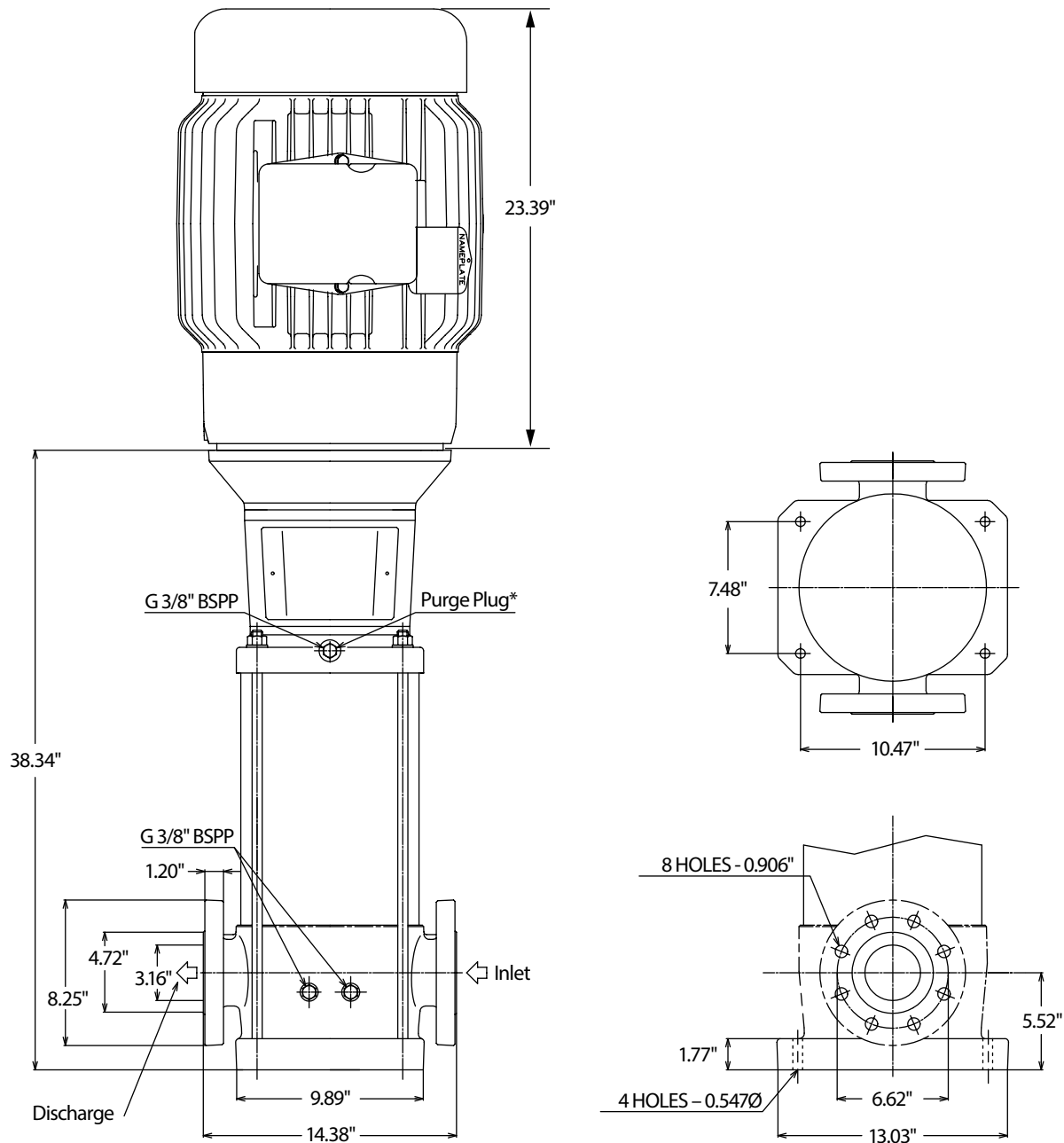
PARTS LIST

900	—	—	Motor, Electric (not shown)	1
901	—	SS	Ring, Snap, C-type	1
902	—	STL	Spacer	1
903	—	SS	Ring, Snap, C-type	1
904	—	—	Bearing, Ball	1
906	—	STL	Coupling, Lower (2-piece)	1
907	—	STL	Screw, Set	1
908	—	STZP	Screws, Coupler	2
909	—	F	Housing, Bearing	1
910	—	STL	Key (Not Shown)	1
911	—	SS	Cover, Suction	1
912	—	FSC	Seal, Mechanical	1
914	—	STZP	Rods, Tie	4
915	—	STZP	Nuts, Tie Rod	4
916	—	STZP	Washers, Tie Rod	4
917	—	S	Guard, Coupling	2
918	—	S	Screws, Coupling Guard	2
919	—	F	Bracket, Motor	1
919B	—	STZP	Screws, Bearing Housing	4
920	—	SS	Plug, Vent	1
921	—	SS	Washer, Vent Plug	1
922	—	FPM	O-Ring, Vent Plug	1
924	—	SSL	Shaft	1
925	—	SS	Nut, Impeller (Not Shown)	1

ITEM	PART	MATL	DESCRIPTION	QTY
926	—	SS	Casting, Outer	1
927	—	FPM	O-Ring, Outer Casing	2
928	—	SS	Plug, Drain	4
928A	—	SS	Washer, Drain Plug	4
928B	—	FPM	O-Ring, Drain Plug	4
929	—	SS	Casing, Bottom	1
929A	—	F	Base	1
929B	—	—	Pin (Shaft)	1
929C	—	STL	Flange, Pump	2
929D	—	STL	Ring, Adjusting	2
930	—	—	<i>Kit, Seal (Includes mechanical seal and 2 outer casing O-Rings)</i>	1
931	—	—	<i>Kit, Hydraulic Includes: Hydraulic Assembly Upper and lower casing o-rings Pump shaft key Pumps coupling snap ring Mechanical seal with o-rings</i>	1

Italics are optional items

Material Codes (Not part of part number): F = Cast Iron, FPM = Fluorocarbon, FSC = FPM w/Silicon Carbide, S = 304 Stainless Steel, SS = 316 Stainless Steel, SSL=316SS/Low Carbon
STL = Steel, STZP = Steel/Zinc Plated



* All air must be purged out before operation to prevent seal damage.

⚠ CAUTIONS AND WARNINGS

A bypass or pressure relief valve should be installed in the discharge line if there is any possibility the pump may operate against a closed valve in the discharge line.

Installing a bleed valve is especially necessary in hot water applications to prevent injury.

Read all CAUTIONS and WARNINGS before commencing service or operation of any high pressure system. The CAUTIONS and WARNINGS are included in the operating instructions, installation and maintenance manual. CAUTIONS and WARNINGS can also be viewed online at www.catpumps.com/cautions_warnings or can be requested directly from Cat Pumps.

WARRANTY

View the Limited Warranty on-line at www.catpumps.com/warranty.



CAT PUMPS

1681 - 94TH LANE N.E. MINNEAPOLIS, MN 55449-4324
 PHONE (763) 780-5440 — FAX (763) 780-2958
 e-mail: techsupport@catpumps.com
www.catpumps.com