

DATA SHEET

VERTICAL MULTISTAGE PUMP



**316 Stainless
Steel Model:**

8S64K1S9T1F



SPECIFICATIONS

Size

Suction 300# ANSI raised face 4.00"

Discharge 300# ANSI raised face 4.00"

HP 10 HP

RPM 3450 RPM

Liquid handled

Type of liquid Clean water (for other clean liquids, consult factory)

Temperature 5° to +248°F (-15° to 120°C)

Working pressure 232 psi (16 bar) max.

Materials

Impeller AISI 316

Intermediate casing AISI 316

Bottom casing AISI 316

Casing cover AISI 316

Outer casing AISI 316

Shaft AISI 316L

Liner ring PTFE/AISI 316

Motor bracket Cast iron/AISI 316

Base Cast iron/AISI 316

Lower Pump Bearings Tungsten carbide

Mechanical seal Silicon/Carbide/Carbon/FPM

Motor

Type NEMA 215TC frame, TEFC

Speed 60 Hz, 3450 RPM (2 poles)

Single Phase 230V

Direction of Rotation Clockwise when viewed from motor end

Test standard ISO 9906 annex A

Weight

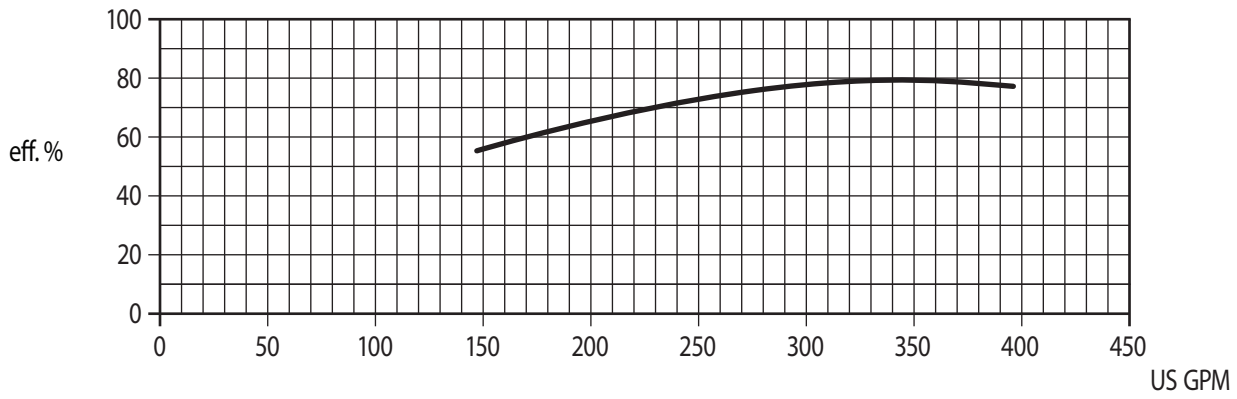
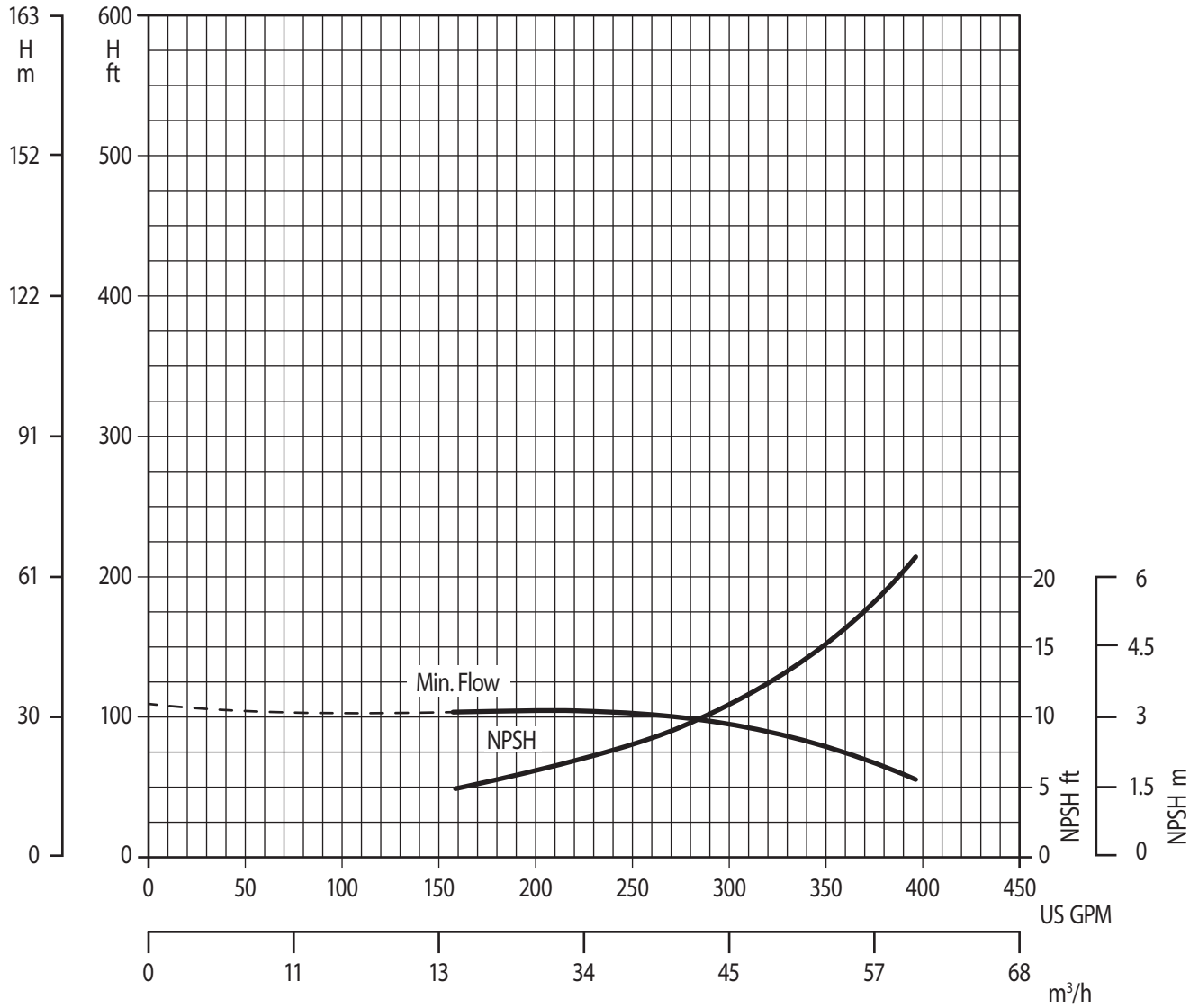
Pump 179 lbs

Motor 167 lbs

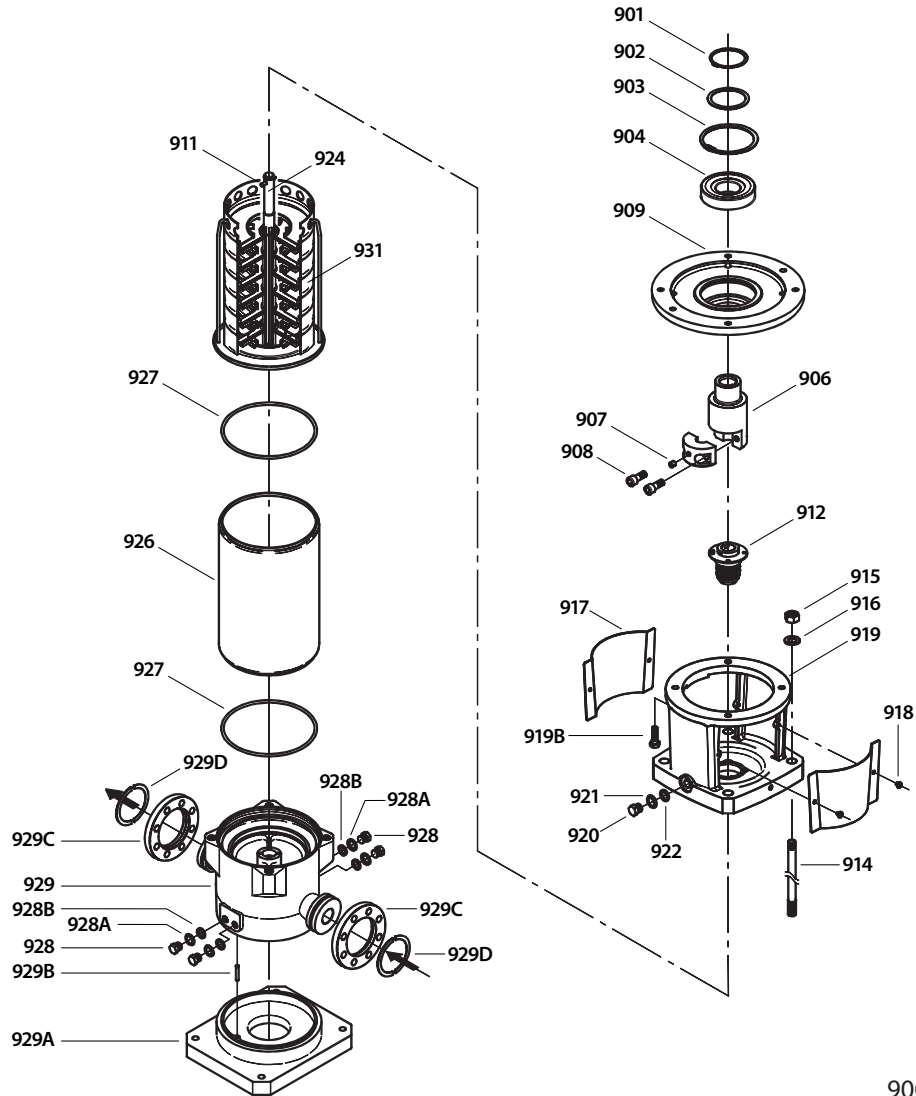
NOTE: See PN 99SVM001 for complete operating instructions, installation and maintenance manual information.

PERFORMANCE CURVE – 3450 RPM

395 gpm, 105 Ft/Hd



EXPLODED VIEW



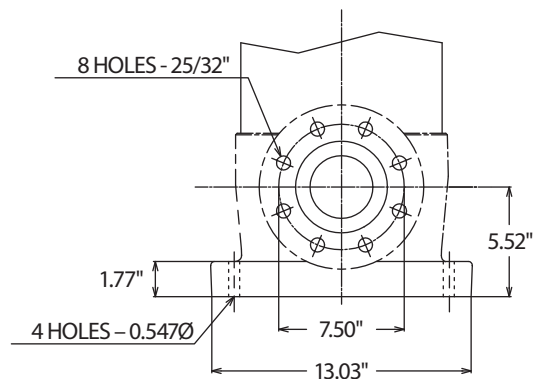
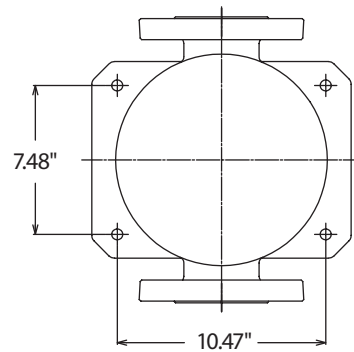
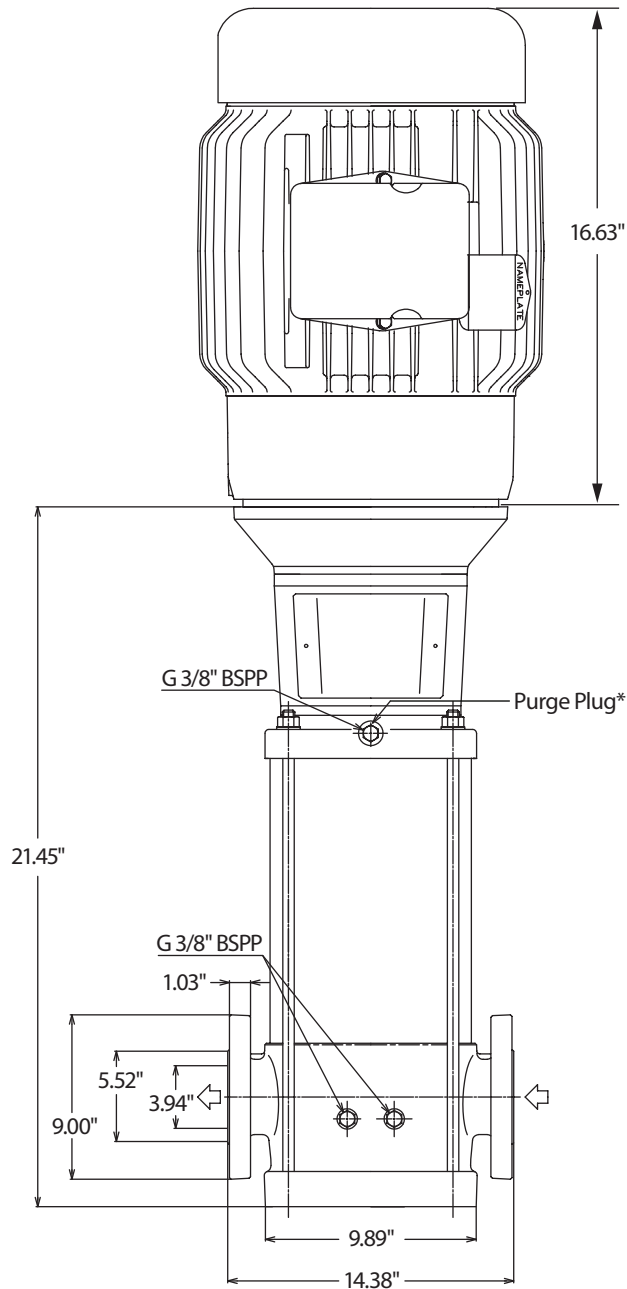
900 Motor not Shown

PARTS LIST

PART	ITEM NUMBER	MATL	DESCRIPTION	QTY	PART	ITEM NUMBER	MATL	DESCRIPTION	QTY
	900	—	Motor, Electric (not shown)	1		924	SSL	Shaft	1
	901	—	Ring, Snap, C-type	1		925	SS	Nut, Impeller (Not Shown)	1
	902	—	Spacer	1		926	SS	Casting, Outer	1
	903	—	Ring, Snap, C-type	1		927	FPM	O-Ring, Outer Casing	2
	904	—	Bearing, Ball	1		928	SS	Plug, Drain	4
	906	—	Coupling, Lower (2-piece)	1		928A	SS	Washer, Drain Plug	4
	907	—	Screw, Set	1		928B	FPM	O-Ring, Drain Plug	4
	908	—	Screws, Coupler	2		929	SS	Casing, Bottom	1
	909	—	Housing, Bearing	1		929A	F	Base	1
	910	—	Key (Not Shown)	1		929B	—	Pin (Shaft)	1
	911	—	Cover, Suction	1		929C	STL	Flange, Pump	2
	912	—	Seal, Mechanical	1		929D	STL	Ring, Adjusting	2
	914	—	Rods, Tie	4		930	—	<i>Kit, Seal (Includes mechanical seal and 2 outer casing O-Rings)</i>	1
	915	—	Nuts, Tie Rod	4		931	—	<i>Kit, Hydraulic</i>	1
	916	—	Washers, Tie Rod	4				<i>Includes: Hydraulic Assembly</i>	
	917	—	Guard, Coupling	2				<i>Upper and lower casing o-rings</i>	
	918	—	Screws, Coupling Guard	2				<i>Pump shaft key</i>	
	919	—	Bracket, Motor	1				<i>Pumps coupling snap ring</i>	
	919B	—	Screws, Bearing Housing	4				<i>Mechanical seal with o-rings</i>	
	920	—	Plug, Vent	1					
	921	—	Washer, Vent Plug	1					
	922	—	O-Ring, Vent Plug	1					

Italics are optional items

Material Codes (Not part of part number): F = Cast Iron, FPM = Fluorocarbon, FSC = FPM w/Silicon Carbide, S = 304 Stainless Steel, SS = 316 Stainless Steel, SSL = 316SS/Low Carbon
STL = Steel, STZP = Steel/Zinc Plated



*** All air must be purged out before operation to prevent seal damage.**

⚠ CAUTIONS AND WARNINGS

All High-Pressure Systems require a primary pressure regulating device (i.e. regulator, unloader) and a secondary pressure relief device (i.e. pop-off valve, relief valve). Failure to install such relief devices could result in personal injury or damage to pump or property. Cat Pumps does not assume any liability or responsibility for the operation of a customer's high pressure system.

Read all CAUTIONS and WARNINGS before commencing service or operation of any high pressure system. The CAUTIONS and WARNINGS are included in each service manual and with each Accessory Data sheet. CAUTIONS and WARNINGS can also be viewed online at www.catpumps.com/cautions-warnings or can be requested directly from Cat Pumps.

WARRANTY

View the Limited Warranty on-line at www.catpumps.com/warranty.



CAT PUMPS

1681 - 94th Lane N.E. Minneapolis, MN 55449-4324

Phone (763) 780-5440 · Fax (763) 780-2958 · e-mail: techsupport@catpumps.com · www.catpumps.com